

THIS DRAWING IS UNPUBLISHED.

RELEASED FOR PUBLICATION

ALL RIGHTS RESERVED.

© COPYRIGHT - By -

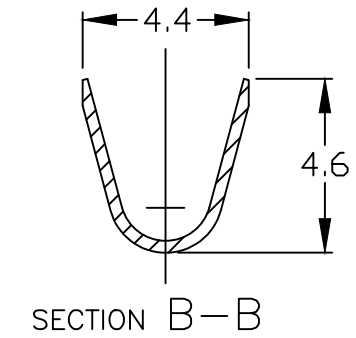
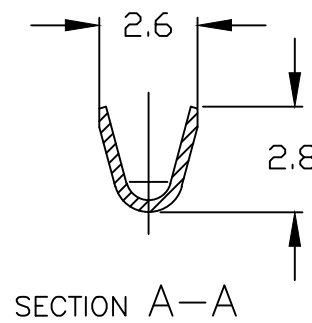
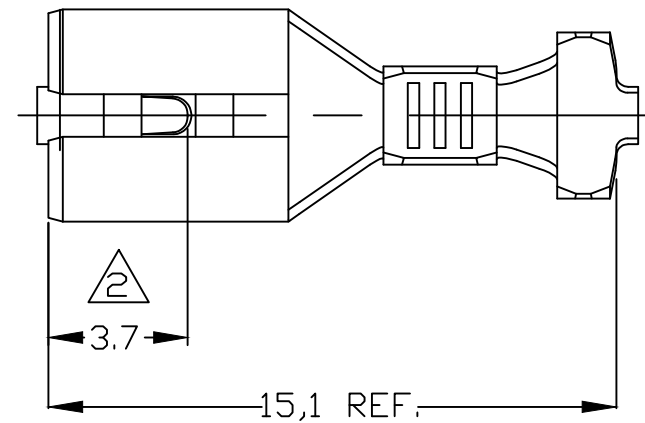
CAD AutoCAD DO NOT REVISE EXCEPT BY CAD

LOC AP

DIST -

REVISIONS

P	LTR	DESCRIPTION	DATE	DWN	APVD
	H	REVISED DESIGN ECO-14-000165	24JAN2014	NCL	WLS



① -PEÇA SOLTA - VER DESENHO 444201.

① -LOOSE PIECE - SEE DRAWING 444201.

② -LOCALIZAÇÃO DO DIMPLE-3,0mm. PARA O PN.1-881623-0.

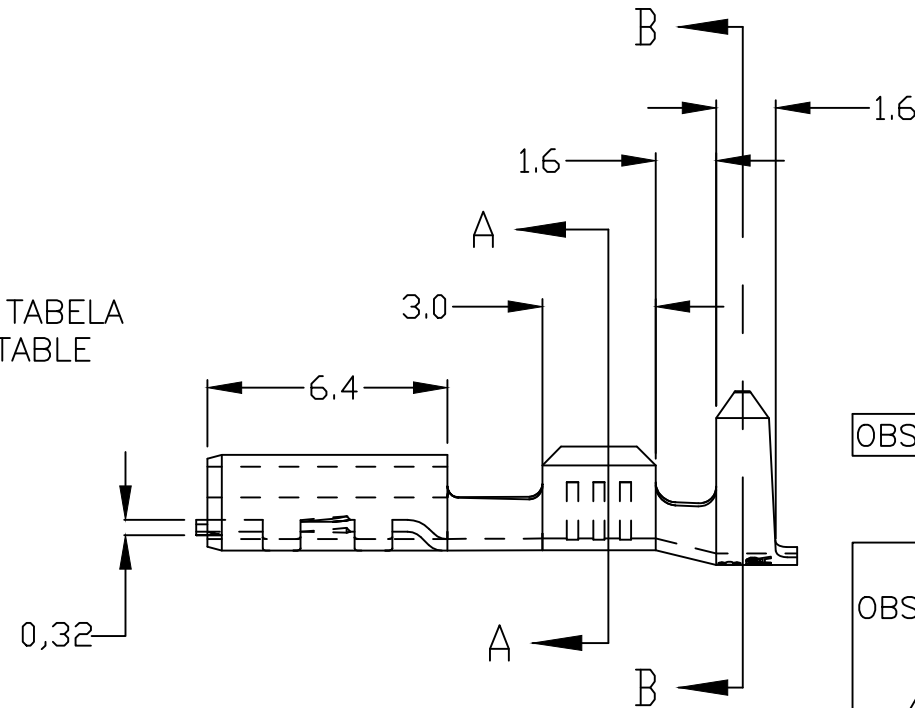
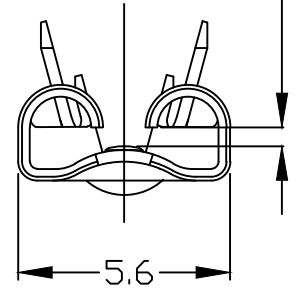
② -DIMPLE LOCATION 3,0mm. FOR PN. 1-881623-0.

③ -OBSOLETE PARTS: OBSOLETE CIS STREAMLINING PER D.RENAUD/D.SINISI

④ -HEAT TREATMENT

INSERTION AND EXTRACTION REQUIREMENTS	1 ST ON (N) MAX.	1 ST OFF (N) MIN.	6 TH ON (N) MIN.
	46	28	15

OLHAR TABELA SEE TABLE



	0,5 mm	---	LATÃO/BRASS	④	1-881623-1	
OBSOLETE	0,8 mm	---	LATÃO/BRASS	②	1-881623-0	
	0,5 mm	ESTANHADO/TIN PLATED	LATÃO/BRASS	①	881623-9	
	0,5 mm	---	LATÃO/BRASS	①	881623-8	
OBSOLETE	OBSOLETE	ESTANHADO/TIN PLATED	LATÃO/BRASS		881623-7	
OBSOLETE	OBSOLETE	---	LATÃO/BRASS		881623-6	
③	0,8 mm	NIQUELADO/NICKEL PLATED	AÇO/STEEL		881623-5	
	0,8 mm	---	AÇO/STEEL		881623-4	
	0,8 mm	ESTANHADO/TIN PLATED	BRONZE/FOSF		881623-3	
	0,8 mm	ESTANHADO/TIN PLATED	LATÃO/BRASS	①	881623-2	
	0,8 mm	---	LATÃO/BRASS	①	881623-1	
		PARA LINGUETA	FINISH		MATERIAL	PART NUMBER

THIS DRAWING IS A CONTROLLED DOCUMENT.

DWN MRBRIZ 10SEP2003

CHK PLARIA 10SEP2003

APVD DOLIVEIRA

PRODUCT SPEC

APPLICATION SPEC

WEIGHT -

CUSTOMER DRAWING

STE TE Connectivity

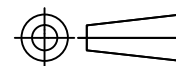
.187 SERIES FASTON REC.

SIZE A3 CAGE CODE 00779 DRAWING NO C=881623 RESTRICTED TO -

SCALE 5:1 SHEET 1 OF 1 REV H

DIMENSIONS: mm

TOLERANCES UNLESS OTHERWISE SPECIFIED:



0 PLC	± -
1 PLC	± 0,3
2 PLC	± -
3 PLC	± -
4 PLC	± -
ANGLES	± 1

MATERIAL

VER TABELA

FINISH

VER TABELA

INS. RANGE Ø2,0 - 3,3 mm

WIRE RANGE 0,5 - 1,0 mm²