

# CDB1610A-8W

## 8 Watt Demonstration Board

### Features

- Quasi-resonant Flyback with Constant-current Output
- Flicker-free Dimming
- Line Voltage 120VAC,  $\pm 10\%$
- Rated Input Power: 8.3W
- Rated Output Power: 7.0W
- Efficiency: 84% at 460mA for 5×LEDs in Series
- Low Component Count
- Supports Cirrus Logic Product CS1610A

### General Description

The CDB1610A-8W reference design demonstrates the performance of the CS1610A resonant mode AC/DC dimmable LED driver IC with a 460mA output driving 5×LEDs in series. It offers best-in-class dimmer compatibility with leading-edge, trailing-edge, center-cut, and digital dimmers.

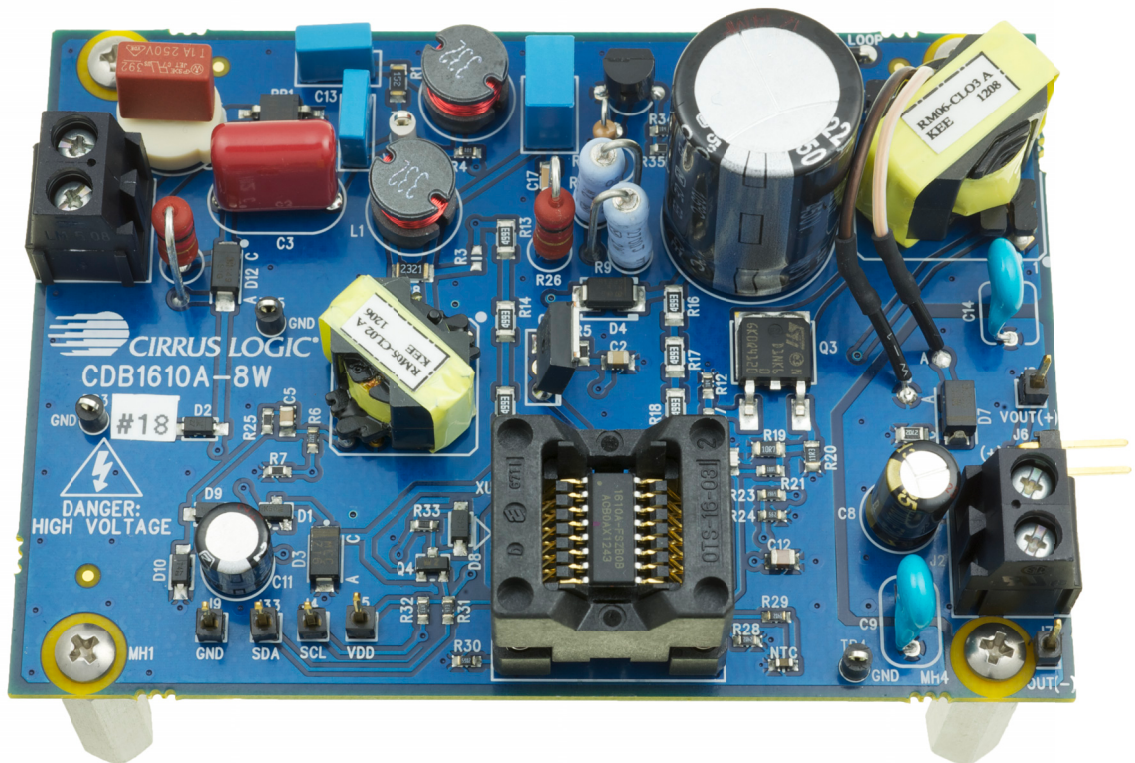
### DIMENSIONS (OVERALL)

Length	Width	Height
3.62" (91.9mm) × 2.54" (64.5mm) × 1.108" (28mm)		

For more information, see Figure 3 on page 6.

### ORDERING INFORMATION

CDB1610A-8W-Z 8 Watt Reference Design  
Supports CS1610A





## IMPORTANT SAFETY INSTRUCTIONS

**Read and follow all safety instructions prior to using this demonstration board.**

This Engineering Evaluation Unit or Demonstration Board must only be used for assessing IC performance in a laboratory setting. This product is not intended for any other use or incorporation into products for sale.

This product must only be used by qualified technicians or professionals who are trained in the safety procedures associated with the use of demonstration boards.

### **⚠ DANGER Risk of Electric Shock**

- The direct connection to the AC power line and the open and unprotected boards present a serious risk of electric shock and can cause serious injury or death. Extreme caution needs to be exercised while handling this board.
- Avoid contact with the exposed conductor or terminals of components on the board. High voltage is present on exposed conductor and it may be present on terminals of any components directly or indirectly connected to the AC line.
- Dangerous voltages and/or currents may be internally generated and accessible at various points across the board.
- Charged capacitors store high voltage, even after the circuit has been disconnected from the AC line.
- Make sure that the power source is off before wiring any connection. Make sure that all connectors are well connected before the power source is on.
- Follow all laboratory safety procedures established by your employer and relevant safety regulations and guidelines, such as the ones listed under, OSHA General Industry Regulations - Subpart S and NFPA 70E.

**⚠ WARNING** Suitable eye protection must be worn when working with or around demonstration boards. Always comply with your employer's policies regarding the use of personal protective equipment.

**⚠ WARNING** All components and metallic parts may be extremely hot to touch when electrically active.

---

## Contacting Cirrus Logic Support

For all product questions and inquiries contact a Cirrus Logic Sales Representative. To find the one nearest to you go to [www.cirrus.com](http://www.cirrus.com)

---

### IMPORTANT NOTICE

Cirrus Logic, Inc. and its subsidiaries ("Cirrus") believe that the information contained in this document is accurate and reliable. However, the information is subject to change without notice and is provided "AS IS" without warranty of any kind (express or implied). Customers are advised to obtain the latest version of relevant information to verify, before placing orders, that information being relied on is current and complete. All products are sold subject to the terms and conditions of sale supplied at the time of order acknowledgment, including those pertaining to warranty, indemnification, and limitation of liability. No responsibility is assumed by Cirrus for the use of this information, including use of this information as the basis for manufacture or sale of any items, or for infringement of patents or other rights of third parties. This document is the property of Cirrus and by furnishing this information, Cirrus grants no license, express or implied under any patents, mask work rights, copyrights, trademarks, trade secrets or other intellectual property rights. Cirrus owns the copyrights associated with the information contained herein and gives consent for copies to be made of the information only for use within your organization with respect to Cirrus integrated circuits or other products of Cirrus. This consent does not extend to other copying such as copying for general distribution, advertising or promotional purposes, or for creating any work for resale.

CERTAIN APPLICATIONS USING SEMICONDUCTOR PRODUCTS MAY INVOLVE POTENTIAL RISKS OF DEATH, PERSONAL INJURY, OR SEVERE PROPERTY OR ENVIRONMENTAL DAMAGE ("CRITICAL APPLICATIONS"). CIRRUS PRODUCTS ARE NOT DESIGNED, AUTHORIZED OR WARRANTED FOR USE IN PRODUCTS SURGICALLY IMPLANTED INTO THE BODY, AUTOMOTIVE SAFETY OR SECURITY DEVICES, LIFE SUPPORT PRODUCTS OR OTHER CRITICAL APPLICATIONS. INCLUSION OF CIRRUS PRODUCTS IN SUCH APPLICATIONS IS UNDERSTOOD TO BE FULLY AT THE CUSTOMER'S RISK AND CIRRUS DISCLAIMS AND MAKES NO WARRANTY, EXPRESS, STATUTORY OR IMPLIED, INCLUDING THE IMPLIED WARRANTIES OF MERCHANTABILITY AND FITNESS FOR PARTICULAR PURPOSE, WITH REGARD TO ANY CIRRUS PRODUCT THAT IS USED IN SUCH A MANNER. IF THE CUSTOMER OR CUSTOMER'S CUSTOMER USES OR PERMITS THE USE OF CIRRUS PRODUCTS IN CRITICAL APPLICATIONS, CUSTOMER AGREES, BY SUCH USE, TO FULLY INDEMNIFY CIRRUS, ITS OFFICERS, DIRECTORS, EMPLOYEES, DISTRIBUTORS AND OTHER AGENTS FROM ANY AND ALL LIABILITY, INCLUDING ATTORNEYS' FEES AND COSTS, THAT MAY RESULT FROM OR ARISE IN CONNECTION WITH THESE USES.

Cirrus Logic, Cirrus, the Cirrus Logic logo designs, EXL Core, and the EXL Core logo design are trademarks of Cirrus Logic, Inc. All other brand and product names in this document may be trademarks or service marks of their respective owners.

## 1. INTRODUCTION

The CS1610A is a 120VAC quasi-resonant flyback mode dimmable LED controller IC. The CS1610A uses a digital control algorithm that is optimized for high efficiency and  $>0.9$  power factor over a wide input voltage range (108VAC to 132VAC). The CS1610A integrates a critical conduction mode (CRM) boost converter that provides power factor correction and dimmer compatibility with a constant output current, quasi-resonant flyback stage. An adaptive dimmer compatibility algorithm controls the boost stage and dimmer compatibility operation mode to enable flicker-free operation to  $<2\%$  output current with leading-edge, trailing-edge, and digital dimmers.

The CDB1610A-8W board is optimized to deliver low system cost in a high-efficiency, flicker-free, phase-dimmable, solid-state lighting (SSL) solution for incandescent lamp replacement applications. The feedback loop is closed through an integrated digital control system within the IC. The variation in switching frequency also provides a spread-frequency spectrum, thus minimizing the conducted EMI filtering requirements. Protection algorithms such as output open/short, current-sense resistor open/short, and overtemperature thermistors protect the system during abnormal conditions. Details of these features are provided in the CS1610A/11A/12A/13A *TRIAC Dimmable LED Driver IC* data sheet.

The CDB1610A-8W board demonstrates the performance of the CS1610A. This reference board has been designed for an output load of  $5\times$  LEDs in series at 460mA (14.6V typical).

This document provides the schematic for the board. It includes oscilloscope screen shots that indicate various operating waveforms. Graphs are also provided that document the performance of the board in terms of Efficiency vs. Load and Power Factor vs. Load for the CS1610A dimmable LED controller IC.

Extreme caution needs to be exercised while handling this board. This board is to be used by trained professionals only.

2. SCHEMATIC

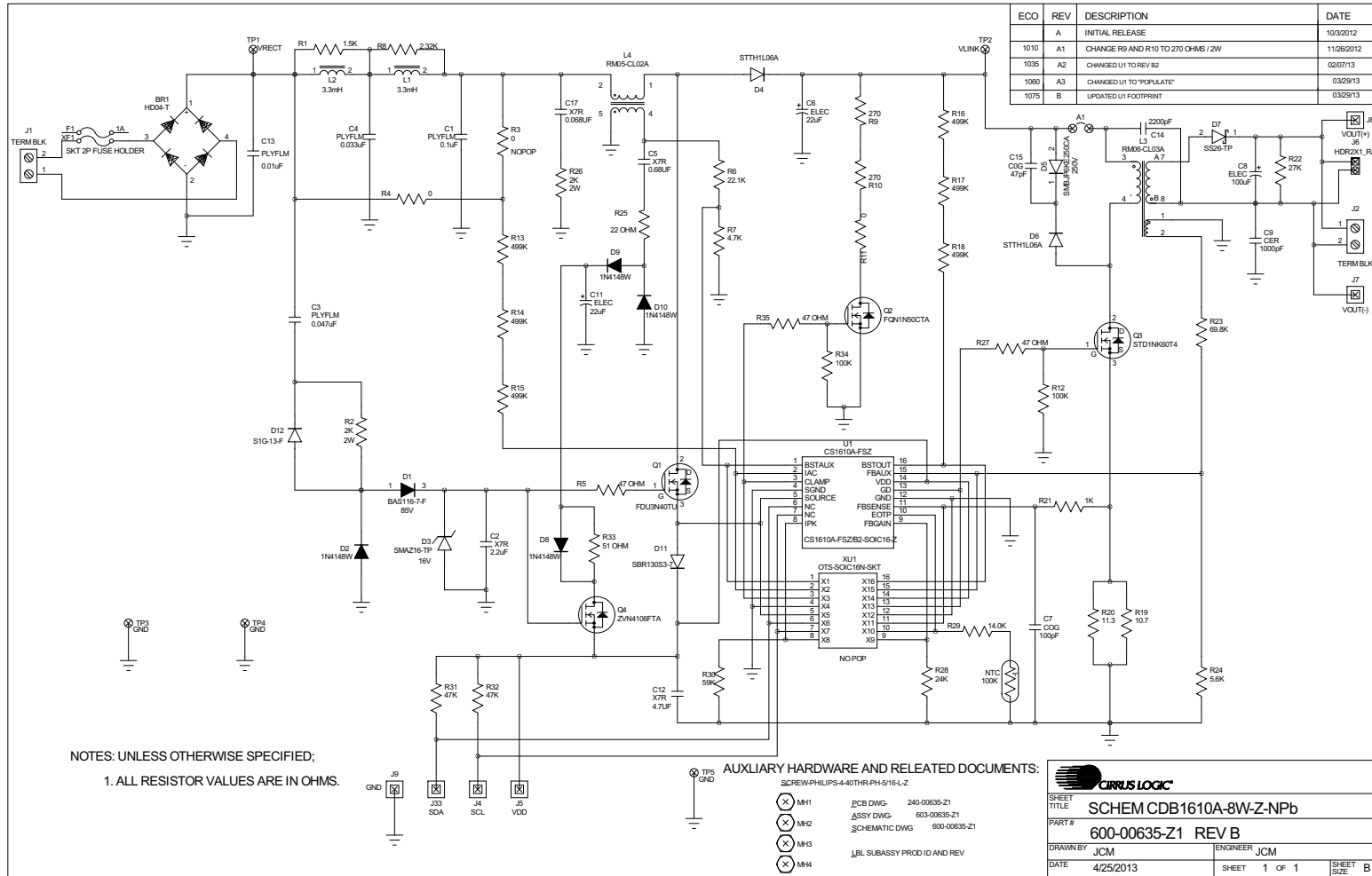


Figure 1. Schematic

**3. BILL OF MATERIALS**

Item	Rev	Description	Qty	Reference Designator	MFG	MFG P/N
1		WIRE JUMPER BLACK 24AWG SOLID	1	A1	ALPHA WIRE COMPANY	3050/1 BK005
2		DIODE RECT 400V 0.8A NPb MINIDIP	1	BR1	DIODES INC	HD04-T
3		CAP 0.1uF ±10% 250V POLY NPb RAD	1	C1	EPCOS	B32529C3104K
4		CAP 2.2uF ±10% 10V X7R NPb 0805	1	C2	MURATA	GRM21BR71E225KA73L
5		CAP 0.047uF ±10% 630V POLY NPb RAD	1	C3	PANASONIC	ECQE6473KF
6		CAP 0.033uF ±10% 250V POLY NPb RAD	1	C4	EPCOS	B32529C3333K
7		CAP 0.68uF ±10% 50V X7R NPb 0805	1	C5	KEMET	C0805C684K5RAC
8		CAP 22uF ±20% 450V ELEC NPb RAD	1	C6	PANASONIC-ECG	EEUEB2W220
9		CAP 100pF ±5% 50V COG NPb 0603	1	C7	KEMET	C0603C101J5GAC
10		CAP 100uF ±20% 25V EL LO ESR NPb RD	1	C8	PANASONIC	EEUFM1E101
11		CAP 1000pF ±10% 2000V CER NPb RAD	1	C9	MURATA	DEBB33D102KA2B
12		CAP 22UF ±20% 35V ELEC RAD	1	C11	PANASONIC	EEA-GA1V220H
13		CAP 4.7uF ±10% 25V X7R NPb 0805	1	C12	TDK	C2012X7R1E475K
14		CAP 0.01uF ±10% 250V POLY NPb RAD	1	C13	EPCOS	B32529C3103K
15		CAP 2200PF +80/-20% 2KV CER NPb RAD	1	C14	MURATA	DEBE33D222ZA2B
16		CAP 47pF ±5% 1000V COG NPb 1206	1	C15	JOHANSON DIELECTRICS	102R18N470JV4E
17		CAP 0.068uF ±10% 250V X7R NPb 1206	1	C17	KEMET	C1206C683KARAC
18		DIODE SWT 85V 215mA NPb SOT-23	1	D1	DIODES INC	BAS116-7-F
19		DIODE FAST SW 75V 350mW NPb SOD123	4	D2 D8 D9 D10	DIODES INC	1N4148W-7-F
20		DIODE ZENER 16V 1W NPb DO-214AC	1	D3	MICRO COMMERCIAL	SMAZ16-TP
21		DIODE ULT FAST 600V 1A NPb SMA	2	D4 D6	ST MICROELECTRONICS	STTH1L06A
22		DIODE TVS 600W 250V BIDIR NPb SMBJ	1	D5	MCC	SMBJPEKE250CA
23		DIODE SKY RECT 60V 2A NPb DO-214AC	1	D7	MICRO COMMERCIAL(MCC)	SS26-TP
24		DIODE RECT 30V 1A NPb SOD-323	1	D11	DIODES INC	SBR130S3-7
25		DIODE RECT 400V 1A NPb SMA	1	D12	DIODES INC	S1G-13-F
26		FUSE 1A 250V TLAG NPb RAD	1	F1	LITTLE FUSE	39211000440
27		CON 2POS TERM BLK 5.08mm SPR NPb RA	2	J1 J2	WEIDMULLER	1716020000
28		HDR 1x1 ML .1 062 S NPb GLD	6	J4 J5 J7 J8 J9 J33	SAMTEC	TSW-101-07-G-S
29		HDR 2x1 ML .1"CTR RA GLD	1	J6	SAMTEC	TSW-102-08-G-S-RA
30		IND 3.3mH ±10% 11.8OHM DCR NPb TH	2	L1 L2	COILCRAFT	RFB0807-332L
31		XFMR 3.1mH 10% NPb TH	1	L3	KUNSHAN EAGERNESS	RM06-CLO3A
32		XFMR 1.45mH 10% NPb TH	1	L4	KUNSHAN EAGERNESS	RM05-CLO2A
33		SPCR STANDOFF 4-40 THR .875L AL NPb	4	MH1 MH2 MH3 MH4	KEYSTONE	1809
34		THERM 100K OHM ±5% 0.10mA NPb 0603	1	NTC	MURATA	NCP18WF104J03RB
35		TRAN MOSFET nCH 2A 400V NPb I-PAK	1	Q1	FAIRCHILD SEMICONDUCTOR	FDU3N40TU
36		TRAN MOSFET nCH 0.38A 500V NPb TO-92	1	Q2	FAIRCHILD	FQN1N50CTA
37		TRAN MOSFET nCH 1.0A 600V NPb DPAK	1	Q3	ST MICROELECTRONICS	STD1NK60T4
38		TRAN MOSFET nCH 60V.2A NPb SOT23-3	1	Q4	DIODES INC	ZVN4106FTA
39		RES 1.5k OHM 1/4W ±5% NPb 1206 FILM	1	R1	DALE	CRCW12061K50JNEA
40		RES PWR 2.0K OHM 2W ±5% NPb AXL	2	R2 R26	VISHAY	PRO2000202001JR500
41		RES 0 OHM 1/10W ±5% NPb 0603 FILM	0	R3	DALE	CRCW06030000Z0EA
42		RES 0 OHM 1/10W ±5% NPb 0603 FILM	1	R4	DALE	CRCW06030000Z0EA
43		RES 47 OHM 1/10W ±1% NPb 0603	3	R5 R27 R35	PANASONIC	ERJ3EK47R0V
44		RES 22.1k OHM 1/10W ±1% NPb 0603	1	R6	DALE	CRCW060322K1FKEA
45		RES 4.70K OHM 1/10W ±1% NPb 0603	1	R7	PANASONIC	ERJ3EK4701V
46		RES 2.32k OHM 1/4W ±1% 1206 FILM	1	R8	DALE	CRCW12062K32FKEA
47		RES 270 OHM 2W ±5% MTL FLM NPb AXL	2	R9 R10	PANASONIC	ERG2S1271
48		RES 0 OHM 1/4W JUMPER CF NPb AXL	1	R11	STACKPOLE	CD14ZTOR00
49		RES 100k OHM 1/10W ±5% NPb 0603 FLM	2	R12 R34	DALE	CRCW0603100KJNEA
50		RES 499K OHM 1/4W ±1% NPb 1206	6	R13 R14 R15 R16 R17 R18	VISHAY	TNPW1206499KFEEA
51		RES 10.7 OHM 1/8W ±1% NPb 0805 FILM	1	R19	DALE	CRCW080510R7FKEA
52		RES 11.3 OHM 1/8W ±1% NPb 0805	1	R20	DALE	CRCW080511R3FKEA
53		RES 1k OHM 1/10W ±1% NPb 0603 FILM	1	R21	DALE	CRCW06031K00FKEA
54		RES 27K OHM 1/8W ±1% NPb 0805	1	R22	PANASONIC	ERJ6ENF2702V
55		RES 69.8k OHM 1/10W ±1% NPb 0603	1	R23	DALE	CRCW060369K8FKEA
56		RES 5.6k OHM 1/10W ±5% NPb 0603 FILM	1	R24	DALE	CRCW06035K60JNEA
57		RES 22.0 OHM 1/10W ±1% NPb 0603	1	R25	PANASONIC	ERJ3EKF22R0V
58		RES 24k OHM 1/10W ±1% NPb 0603 FILM	1	R28	DALE	CRCW060324K0FKEA
59		RES 14k OHM 1/10W ±1% NPb 0603 FILM	1	R29	DALE	CRCW060314K0FKEA
60		RES 59k OHM 1/10W ±1% NPb 0603 FILM	1	R30	DALE	CRCW060359K0FKEA
61		RES 47k OHM 1/10W ±5% NPb 0603 FILM	2	R31 R32	DALE	CRCW060347K0JNEA
62		RES 51.0 OHM 1/10W ±1% NPb 0603	1	R33	PANASONIC	ERJ3EKF51R0V
63		CON TEST PT .1" TIN PLATE WHT NPb	2	TP1 TP2	KEYSTONE	5002
64		CON TEST PT .1"CTR TIN PLATE NPb BLK	3	TP3 TP4 TP5	KEYSTONE	5001
65	B2	IC CRUS DIM 120V LED DRV NPb SOIC16	1	U1	CIRRUS LOGIC	CS1610A-FSZ/B2
66		FUSE MOUNT TR5/TE5 3mm 2P NPb TH	1	XF1	Littelfuse	5600001319
67		SCREW 4-40X5/16" PH MACH SS NPb	1	XMH1	BUILDING FASTENERS	PMSSS 440 0031 PH
68		SKT PINCH CONTACT FOR SOIC16N	1	XU1	ENPLAS	OTS-16-1.27-03

**Figure 2. Bill of Materials**

# 4. BOARD LAYOUT

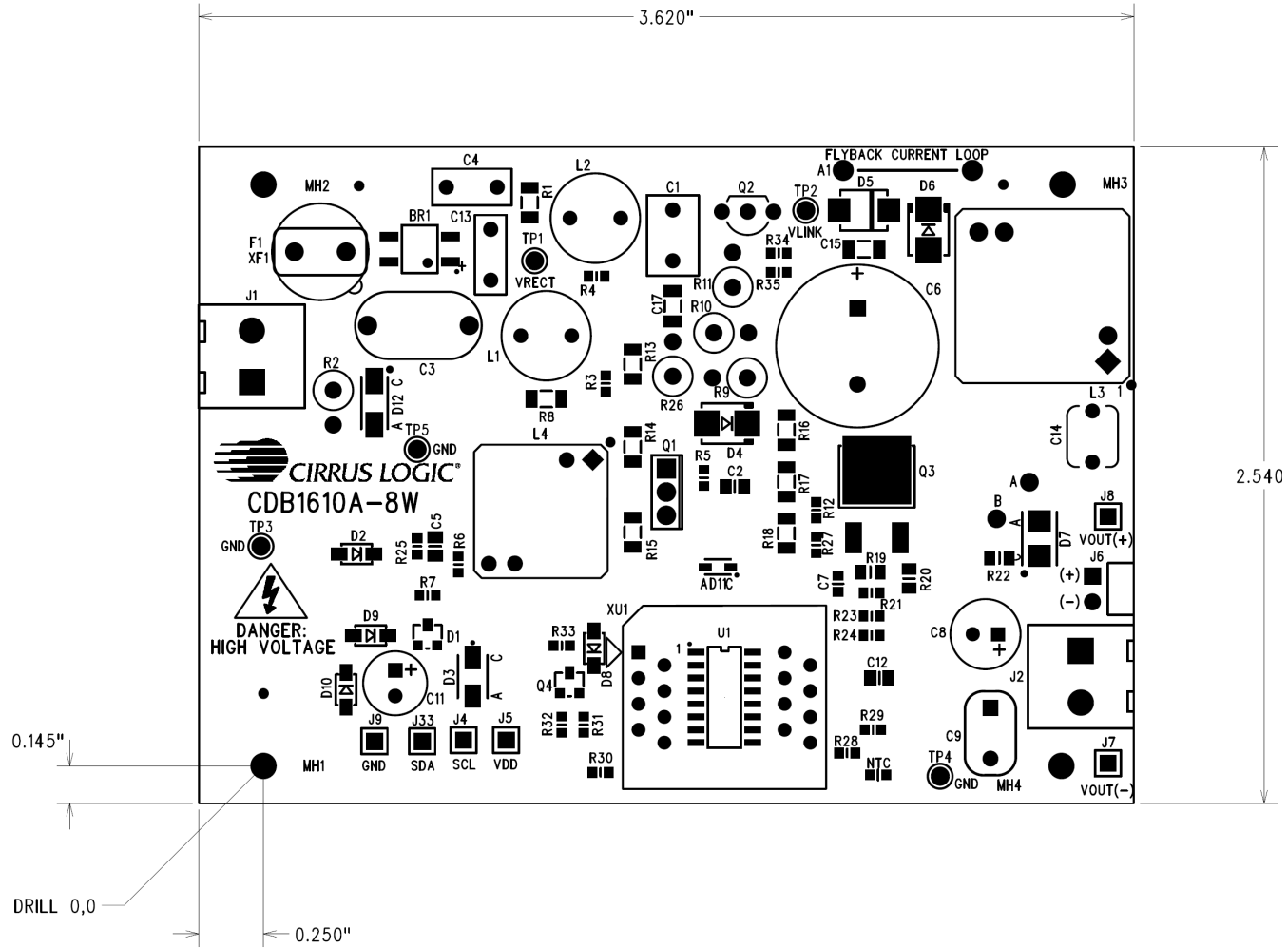


Figure 3. PCB Dimensions

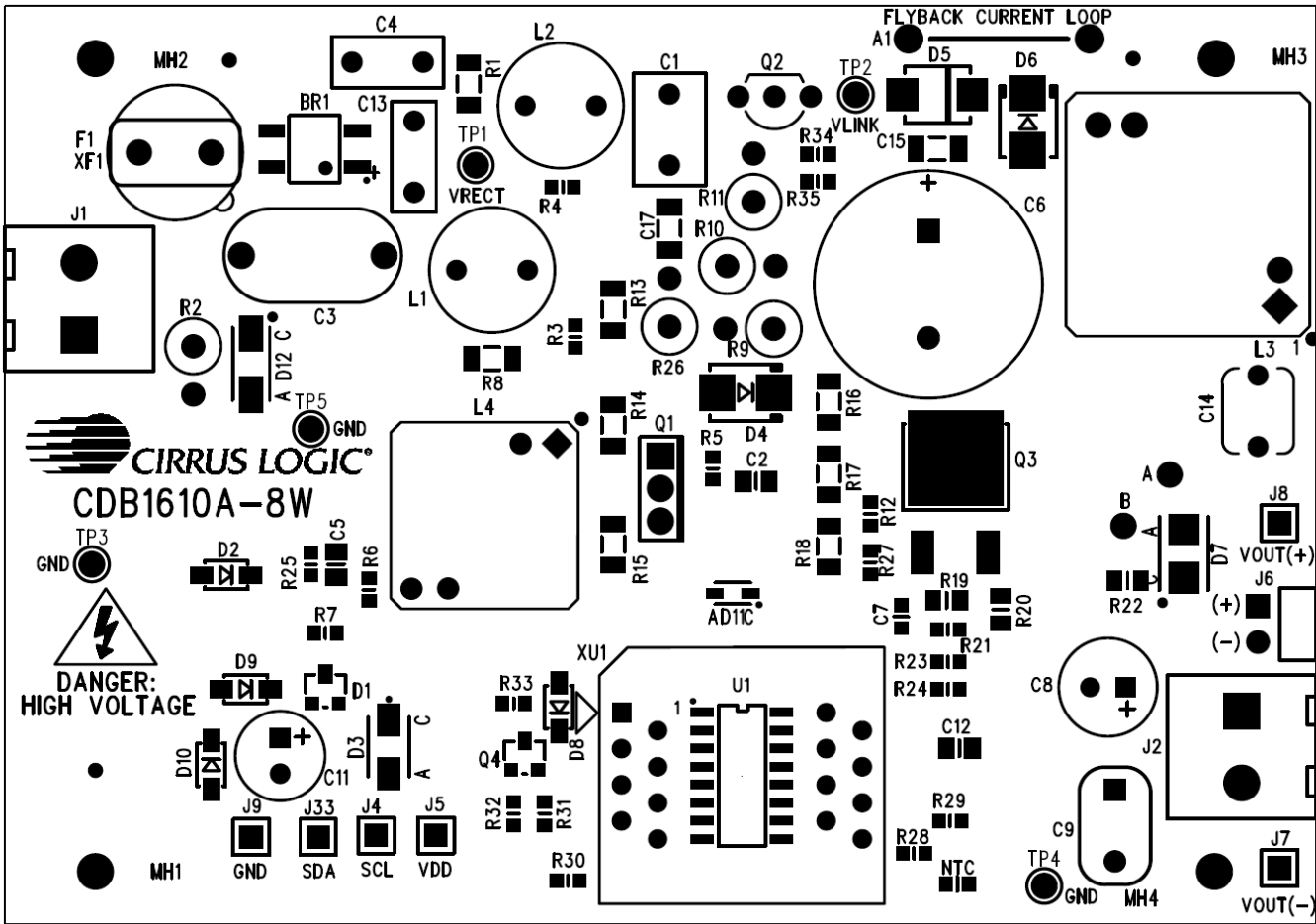


Figure 4. Top Silkscreen

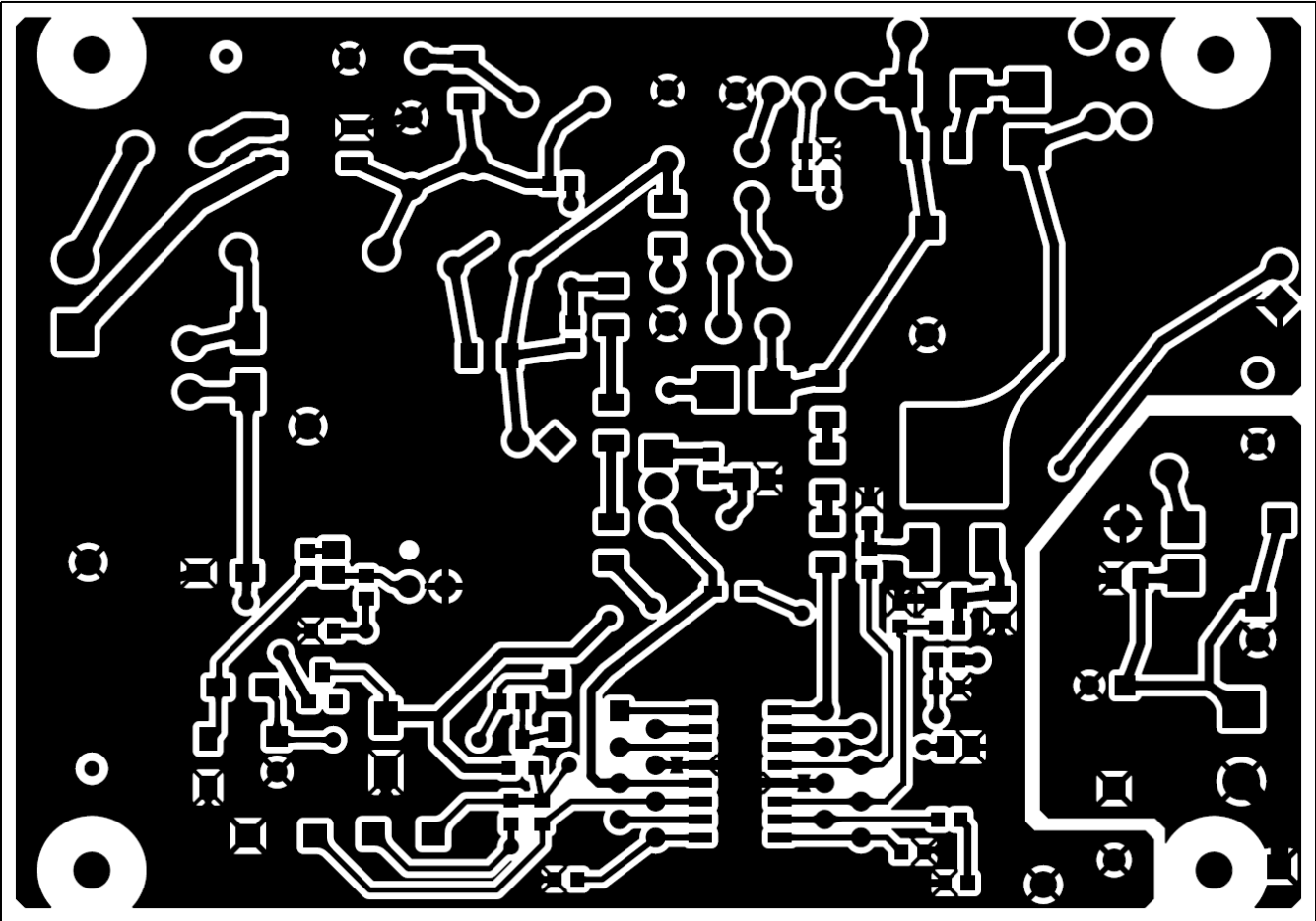


Figure 5. Top Routing



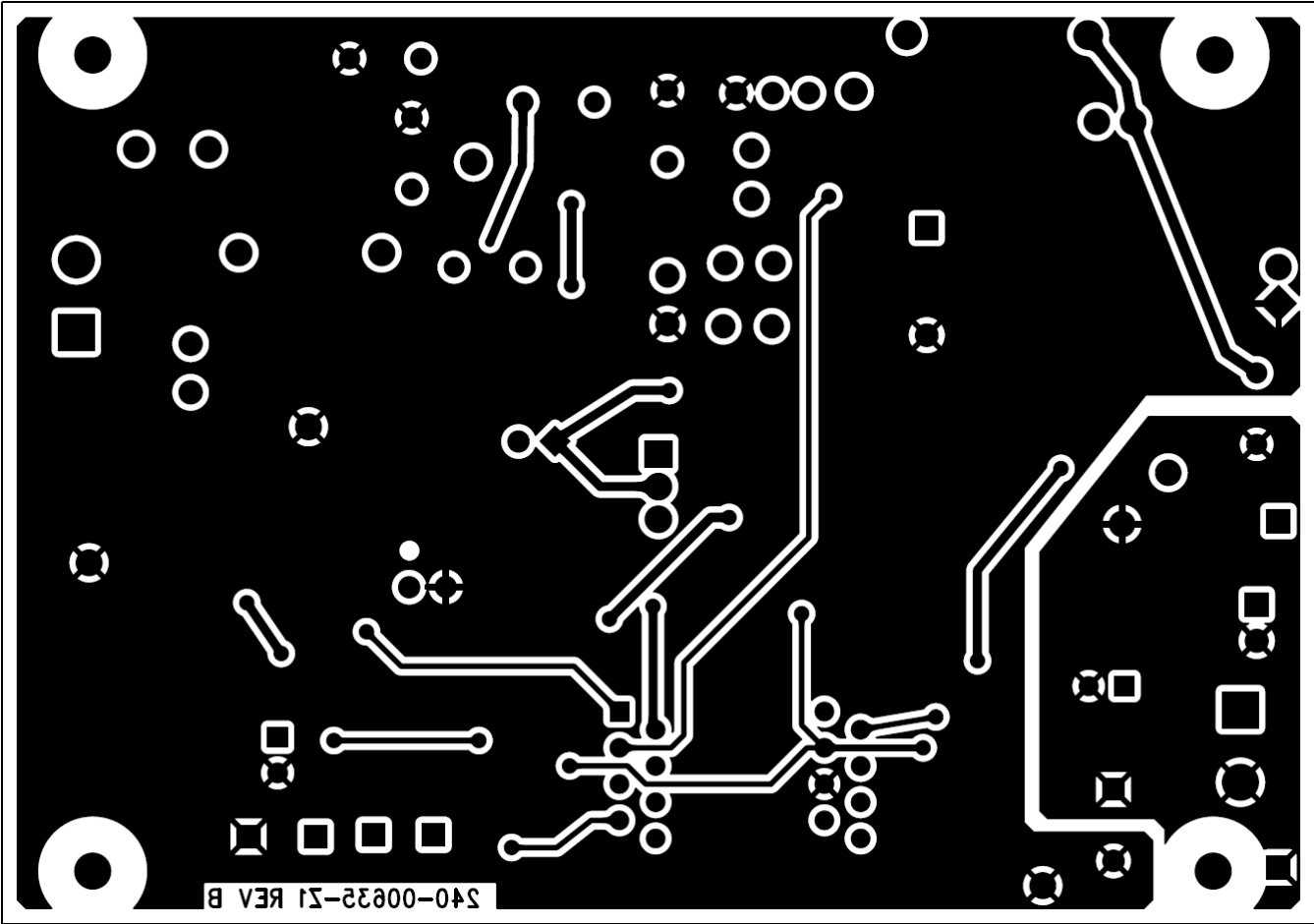


Figure 6. Bottom Routing

**5. DIMMER COMPATIBILITY**

PAR 16 Lamp with a CS1610A (120V/60Hz)			
<b>Date</b>	11/15/2012	<b>Power Factor<sup>1,4</sup></b>	0.96
<b>Vendor</b>	Cirrus Logic	<b>EN55015 Compliant (Y/N)</b>	Y
<b>Input Voltage</b>	120V/60Hz	<b>Nominal Input Power (W)<sup>1,4</sup></b>	6.94
<b>Form Factor</b>	PAR 16	<b>Maximum Input Power (W)<sup>1,4</sup></b>	8.5
<b>Model #</b>	CRD1610A-8W	<b>Output Voltage (V)<sup>1,2</sup></b>	12
<b>IC</b>	CS1610A	<b>Output Current (mA)<sup>1,2</sup></b>	475
<b>Topology</b>	Boost/Flyback	<b>Output Current Ripple ≤ 120Hz (mA)<sup>1,3</sup></b>	0
<b>Isolation (Y/N)</b>	Y	<b>Output Power (W)<sup>1,4</sup></b>	5.7
<b>Efficiency (%)</b>	82.1%		

Dimmer <sup>5</sup>		Flicker Free Steady-State			Monotonic Dimming			Max I <sub>out</sub> (%)			Min I <sub>out</sub> (%)		
Manufacture	Type	# of lamps			# of lamps			# of lamps			# of lamps		
		1	5	10	1	5	10	1	5	10	1	5	10
Cooper 38T	Leading Edge	Y	Y	Y	Y	Y	Y	99.8	99.8	99.8	2.1	2.1	2.1
Cooper 6001A	Leading Edge	Y	Y	Y	Y	Y	Y	99.8	99.8	99.8	2.1	2.1	2.1
Cooper 9530DS	Leading Edge	Y	Y	Y	Y	Y	Y	99.8	99.8	100.0	2.1	2.1	2.1
GE 52136	Leading Edge	Y	Y	Y	Y	Y	Y	99.8	99.8	99.8	2.1	2.1	2.1
Leviton 6161	Leading Edge	Y	Y	Y	Y	Y	N	99.8	99.8	99.8	2.1	2.1	2.1
Leviton 6613	Leading Edge	Y	Y	Y	Y	Y	Y	99.8	99.8	99.8	2.1	2.1	2.1
Leviton 6615	Trailing Edge	Y	Y	Y	Y	Y	Y	99.6	99.6	99.6	2.3	2.1	2.1
Leviton 6627	Leading Edge	Y	Y	Y	Y	Y	Y	99.8	99.8	99.8	9.5	9.3	8.8
Leviton 6631	Leading Edge	Y	Y	Y	Y	Y	Y	99.8	99.8	99.8	2.1	2.1	2.1
Leviton 6641	Leading Edge	Y	Y	Y	Y	Y	Y	99.8	99.8	99.8	2.1	2.1	2.1
Leviton 6674	Leading Edge	Y	Y	Y	Y	Y	Y	99.8	99.8	99.8	2.1	2.1	2.1
Leviton 6683	Leading Edge	Y	Y	Y	Y	Y	Y	100.0	99.8	99.8	2.1	2.1	2.1
Leviton 6684	Leading Edge	Y	Y	Y	Y	Y	Y	99.8	99.8	99.8	2.1	2.1	2.1
Leviton 700	Leading Edge	Y	Y	Y	Y	Y	Y	99.8	99.8	99.8	2.1	2.1	2.1
Leviton ACE04	Trailing Edge	Y	Y	Y	Y	Y	Y	99.6	99.6	99.6	2.1	2.1	2.1
Leviton ACM06	Leading Edge	Y	Y	Y	Y	Y	Y	99.8	99.8	99.8	2.1	2.1	2.1
Leviton ACX10	Leading Edge	Y	Y	Y	Y	Y	Y	99.8	99.8	99.8	8.2	8.2	8.0
Leviton HCM06	Leading Edge	Y	Y	Y	Y	Y	N	99.8	99.8	99.8	2.1	2.1	2.1
Leviton IPI06-1L	Leading Edge	Y	Y	Y	Y	Y	Y	99.8	99.8	99.8	2.1	2.1	2.1
Leviton IPL06	Leading Edge	Y	Y	Y	Y	Y	Y	99.8	99.8	99.8	2.1	2.1	2.1
Leviton PR180	Motion Detection	Y	Y	Y	Y	Y	Y	99.8	99.8	99.8	0.0	0.0	0.0
Leviton VZM06	Leading Edge	Y	Y	Y	Y	Y	Y	99.8	99.8	99.8	2.1	2.1	2.1
Lutron AB-600	Leading Edge	Y	Y	Y	Y	Y	Y	99.8	99.8	99.8	2.1	2.1	2.1

Dimmer <sup>5</sup>		Flicker Free Steady-State			Monotonic Dimming			Max I <sub>out</sub> (%)			Min I <sub>out</sub> (%)		
Manufacture	Type	# of lamps			# of lamps			# of lamps			# of lamps		
		1	5	10	1	5	10	1	5	10	1	5	10
Lutron AYCL-153P	Leading Edge	Y	Y	Y	Y	Y	Y	99.8	99.8	99.8	3.2	3.4	3.2
Lutron CTCL-153P	Leading Edge	Y	Y	Y	Y	Y	Y	99.8	99.8	99.8	4.2	4.2	3.8
Lutron DV-600P	Leading Edge	Y	Y	Y	Y	Y	Y	99.8	99.8	99.8	2.1	2.1	2.1
Lutron DVCL-153P	Leading Edge	Y	Y	Y	Y	Y	Y	99.8	99.8	99.8	2.1	2.1	2.1
Lutron DVELV-300P	Trailing Edge	Y	Y	Y	Y	Y	Y	98.9	97.5	96.0	2.1	2.1	2.1
Lutron GL-600H	Leading Edge	Y	Y	Y	Y	Y	Y	99.8	99.8	99.8	2.1	2.1	2.1
Lutron LGCL-153PLH	Leading Edge	Y	Y	Y	Y	Y	Y	99.8	99.8	99.8	2.5	2.5	2.3
Lutron MACL-153M	Leading Edge	Y	Y	Y	Y	Y	Y	95.6	95.6	94.9	2.1	2.1	2.1
Lutron MAW600	Leading Edge	Y	Y	Y	Y	Y	Y	99.8	99.8	99.8	2.1	2.1	2.1
Lutron MIR-600	Leading Edge	Y	Y	Y	Y	Y	Y	99.8	99.8	99.8	2.1	2.1	2.1
Lutron MRF2-6ND-120	Leading Edge	Y	Y	Y	Y	Y	Y	99.8	99.8	99.8	2.1	2.1	2.1
Lutron MS-0PS6M-DV	Occupancy Sensor	Y	Y	Y	Y	Y	Y	99.8	99.8	100.0	0.0	0.0	0.0
Lutron NT2000	Leading Edge	Y	Y	Y	Y	Y	Y	99.8	99.8	99.8	2.1	2.1	2.1
Lutron NTELV-600	Trailing Edge	Y	Y	Y	Y	Y	Y	92.2	90.5	89.9	2.1	2.1	2.1
Lutron NTLV-600	Leading Edge	Y	Y	Y	Y	Y	Y	99.8	99.8	99.8	2.1	2.1	2.1
Lutron S-103P	Leading Edge	Y	Y	Y	Y	Y	Y	99.8	99.8	99.8	2.1	2.1	2.1
Lutron S-600P	Leading Edge	Y	Y	Y	Y	Y	Y	99.8	99.8	99.8	2.1	2.1	2.1
Lutron SELV-303P	Trailing Edge	Y	Y	Y	Y	Y	Y	86.7	85.3	84.0	2.1	2.1	2.1
Lutron SLV-600P	Leading Edge	Y	Y	Y	Y	Y	Y	99.8	99.8	99.8	2.1	2.1	2.1
Lutron SLV-603P	Leading Edge	Y	Y	Y	Y	Y	Y	99.8	99.8	99.8	2.1	2.1	2.1
Lutron SPS-600	Leading Edge	Y	Y	N	Y	Y	Y	99.8	99.8	99.8	2.1	2.1	2.1
Lutron SPSLV-1000	Leading Edge	Y	Y	N	Y	Y	Y	99.8	99.8	99.8	2.1	2.1	2.1
Lutron TG-600P	Leading Edge	Y	Y	Y	Y	Y	Y	99.8	99.8	99.8	2.1	2.1	2.1
Lutron TGCL-153PH	Leading Edge	Y	Y	Y	Y	Y	Y	99.8	99.8	99.8	3.4	3.4	3.2
Lutron TTCL-100H	Leading Edge	Y	Y	Y	Y	Y	Y	99.8	99.8	99.8	2.1	2.1	2.1
Pass & Seymour RW500U	Occupancy Sensor	Y	Y	Y	Y	Y	Y	99.8	98.7	98.3	0.0	0.0	0.0
Smarthome 2486DIV6	Leading Edge	Y	Y	Y	Y	Y	Y	99.8	99.8	99.8	2.1	2.1	2.1

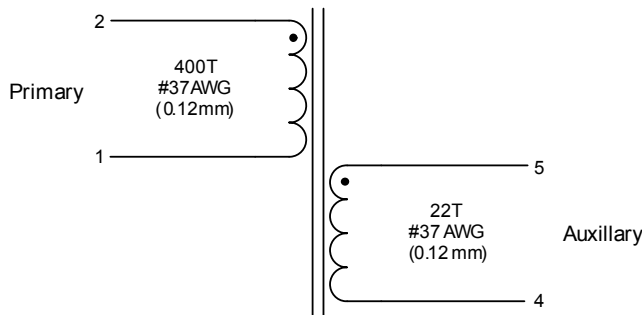
- Notes:
1. Tested at nominal input voltage, nominal input frequency and without a dimmer after soaking for 15 minutes
  2. Average
  3. Peak-to-peak
  4. Measured with Chroma 66202 Power Analyzer
  5. This document includes trademarks, trade names, brands, logos, product names and/or product identifiers of companies other than Cirrus Logic, Inc. All such trademarks, trade names, brands, logos, product names, and product identifiers are for identification purposes only and are the property of their respective owners, who are not affiliated with Cirrus Logic. Please visit the respective sites of those owners to obtain a listing or understanding of their trademark rights. This document also includes results from testing performed by Cirrus Logic for its own purposes and for which there are currently no industry standards. While this testing was applied objectively, its results may include at least some degree of subjectivity. The testing or test results should not be interpreted as any comment on the overall quality or suitability of any tested products.

## 6. INDUCTOR CONSTRUCTION

The CDB1610A-8W includes a critical conduction mode (CRM) boost converter that provides power factor correction and dimmer compatibility with a constant output current, quasi-resonant flyback stage. The following sections describe the boost and flyback inductors installed on the CDB1610A-8W.

### 6.1 Boost Inductor

The CS1610A uses an adaptive dimmer compatibility algorithm to control the boost inductor stage, which guarantees dimmer compatibility operation plus enables flicker-free operation with leading-edge, trailing-edge, and digital dimmers. The boost auxiliary winding is used for zero-current detection (ZCD) and supplies power to the CS1610A.



**Figure 7. Boost Inductor Schematic**

#### 6.1.1 Electrical Specifications

Characteristics conditions:

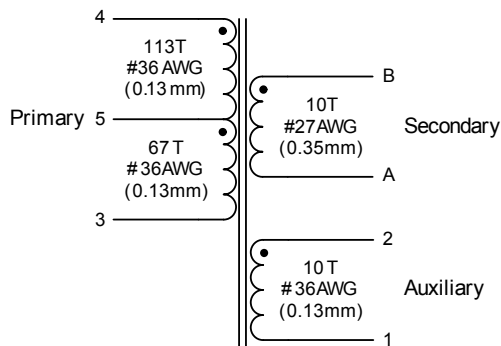
- Operating temperature range: -25 °C to +120 °C (including coil heat)

Parameter	Condition	Symbol	Min	Typ	Max	Unit
<b>Boost Inductor</b>						
Primary Inductance (Note 1)	$f_{\text{resonant}}=10\text{kHz}$ , 0.3V at 20°C	$L_p$	1.305	1.45	1.595	mH
Primary DC Resistance (Note 1)	$t_{\text{DCR}}=20^\circ\text{C}$		3.28	4.1	4.92	$\Omega$
Auxiliary DC Resistance (Note 2)	$t_{\text{DCR}}=20^\circ\text{C}$		0.456	0.57	0.684	$\Omega$

- Notes:
1. Measured across pins 1 and 2
  2. Measured across pins 5 and 4

## 6.2 Flyback Transformer

The flyback transformer stage is a quasi-resonant current-regulated DC-DC converter capable of delivering the highest possible efficiency at a constant current while minimizing line frequency ripple. The auxiliary winding is used for zero-current detection and overvoltage protection.



**Figure 8. Flyback Transformer Schematic**

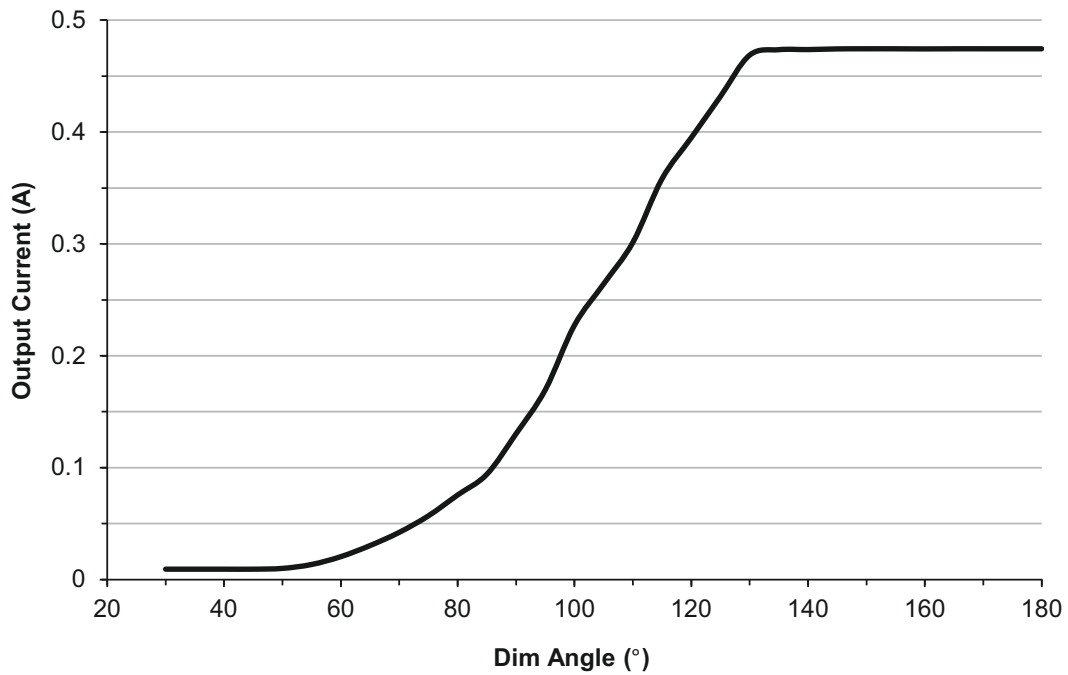
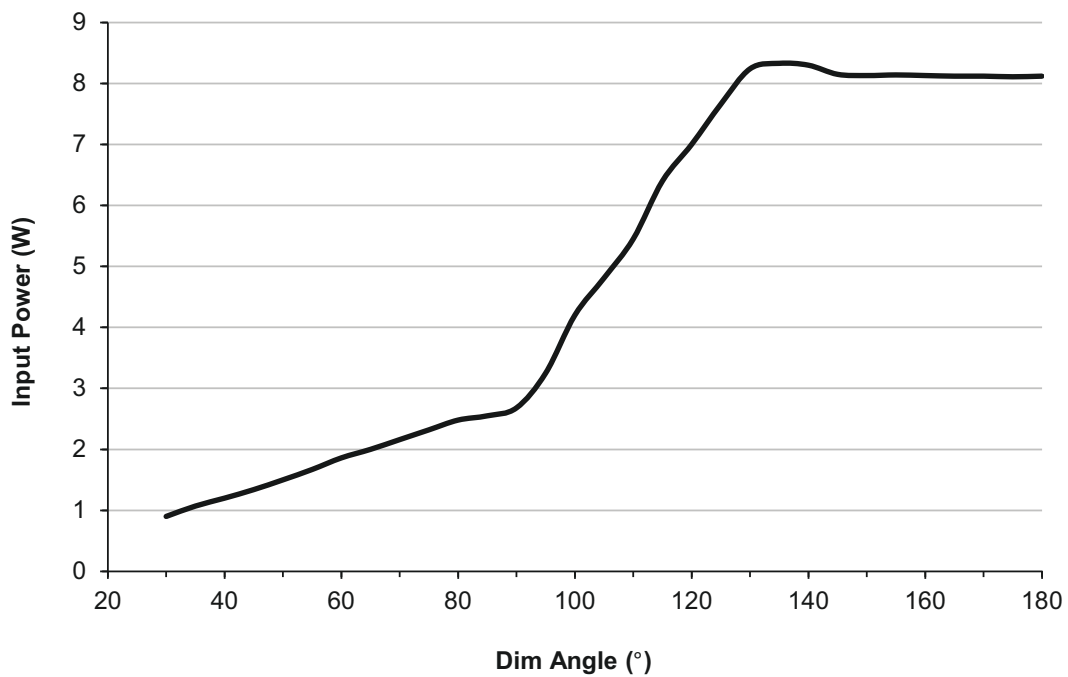
### 6.2.1 Electrical Specifications

Characteristics conditions:

- Operating temperature range: -25 °C to +120 °C (including coil heat)

Parameter	Condition	Sym	Min	Typ	Max	Unit
<b>Flyback Transformer</b>						
Electrical Strength	(Note 3) $f_{\text{operate}}=50/60\text{Hz}$		-	4K	-	$V_{\text{RMS}}$
Primary Inductance	(Note 4) $f_{\text{resonant}}=10\text{kHz}$ , 0.3V at 20°C	$L_P$	2.79	3.1	3.41	mH
Primary Leakage Inductance	(Note 4) $f_{\text{resonant}}=10\text{kHz}$ , 0.3V at 20°C	$L_K$	-	-	15	$\mu\text{H}$
Primary DC Resistance	(Note 4) $t_{\text{DCR}}=20^\circ\text{C}$		2.175	2.90	3.625	$\Omega$
Secondary DC Resistance	(Note 5) $t_{\text{DCR}}=20^\circ\text{C}$		-	-	0.22	$\Omega$
Auxiliary DC Resistance	(Note 6) $t_{\text{DCR}}=20^\circ\text{C}$		0.3975	0.53	0.6625	$\Omega$

- Notes:
3. Time = 2 s.
  4. Measured across pins 3 and 4
  5. Measured across pins B and A
  6. Measured across pins 2 and 1

**7. PERFORMANCE PLOTS**

**Figure 9. Typical Output Current vs. Dim Angle**

**Figure 10. Typical Input Power vs. Dim Angle**

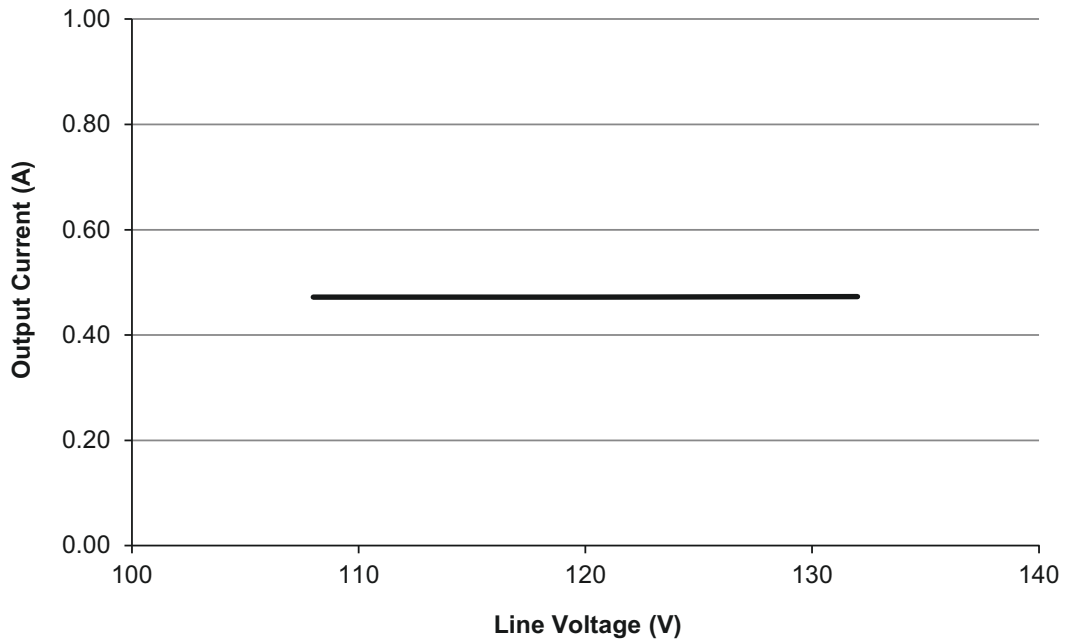


Figure 11. Output Current vs. Line Voltage, 108VAC to 132VAC

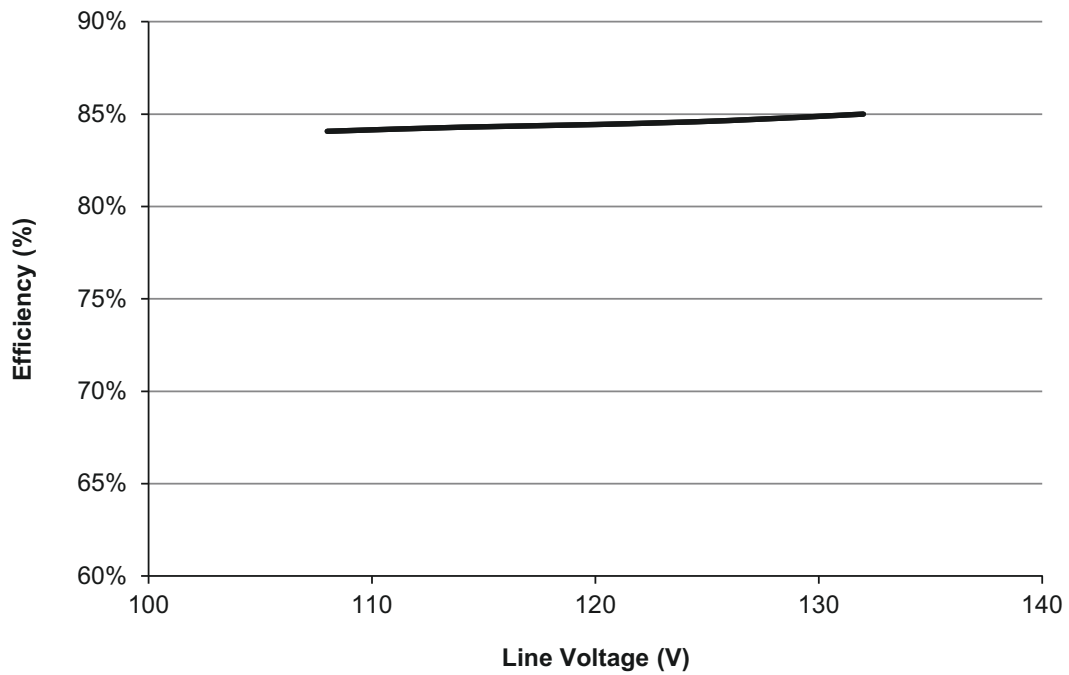


Figure 12. Typical Efficiency vs. Line Voltage, 108VAC to 132VAC

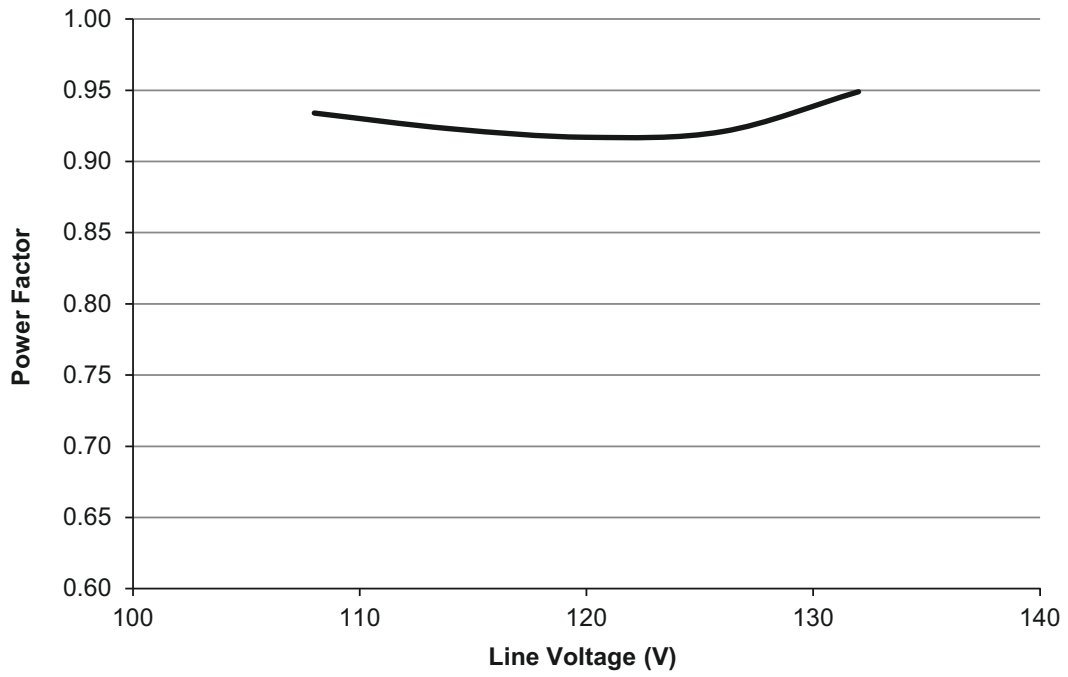
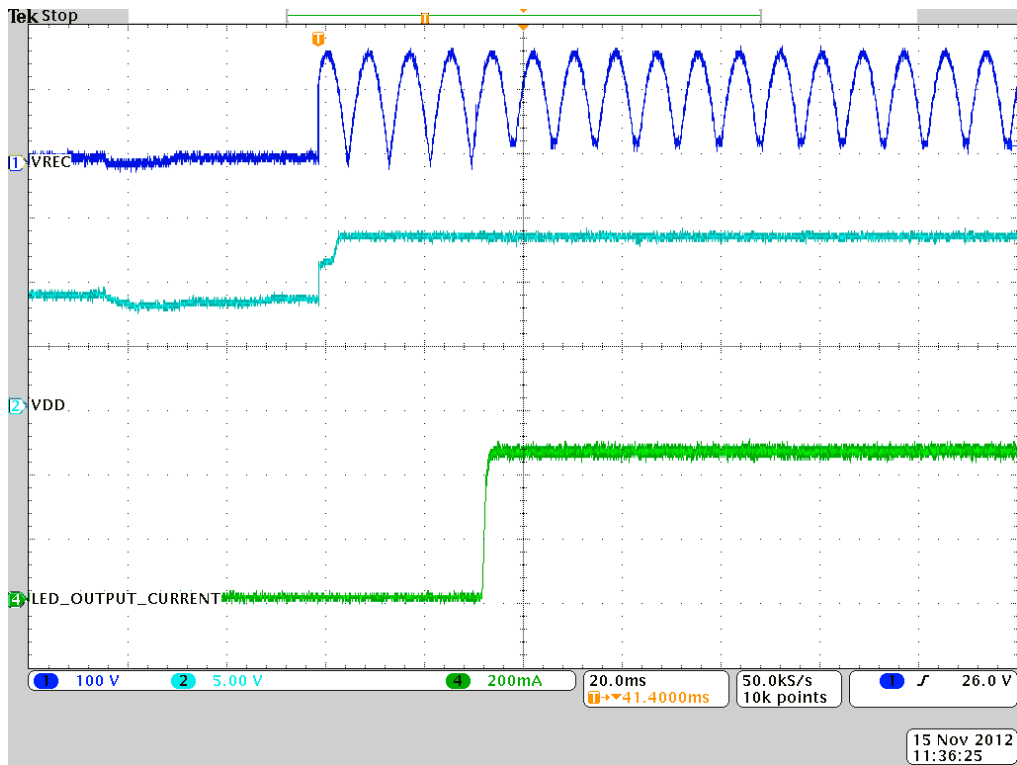
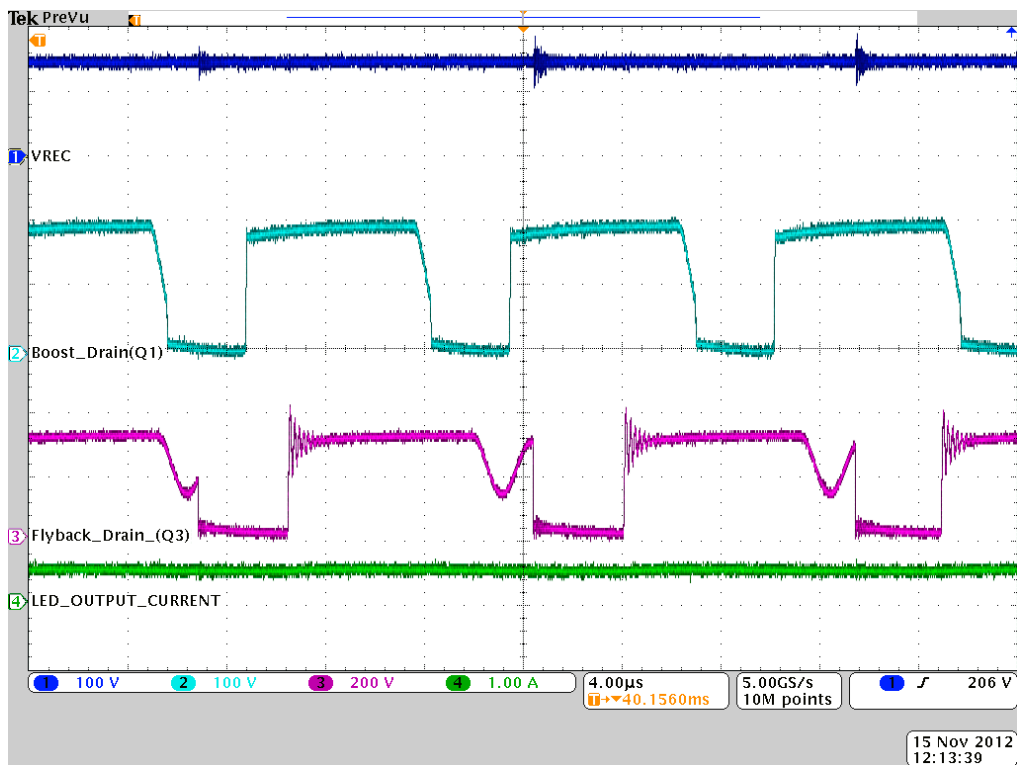


Figure 13. Power Factor vs. Line Voltage, 108VAC to 132VAC

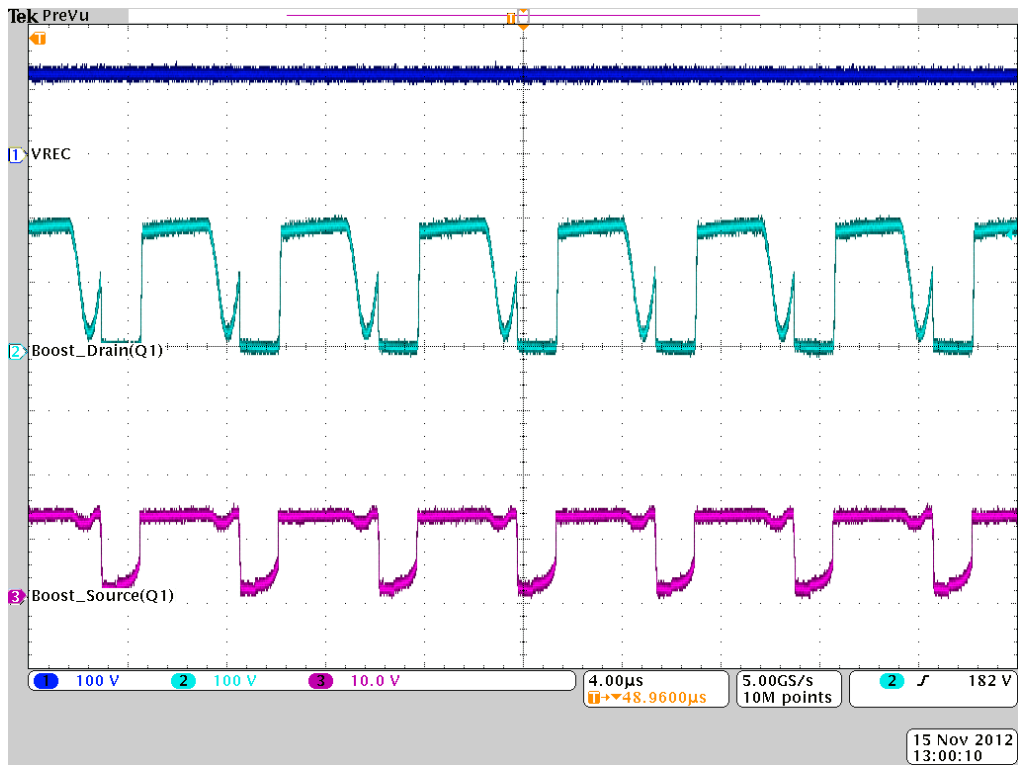
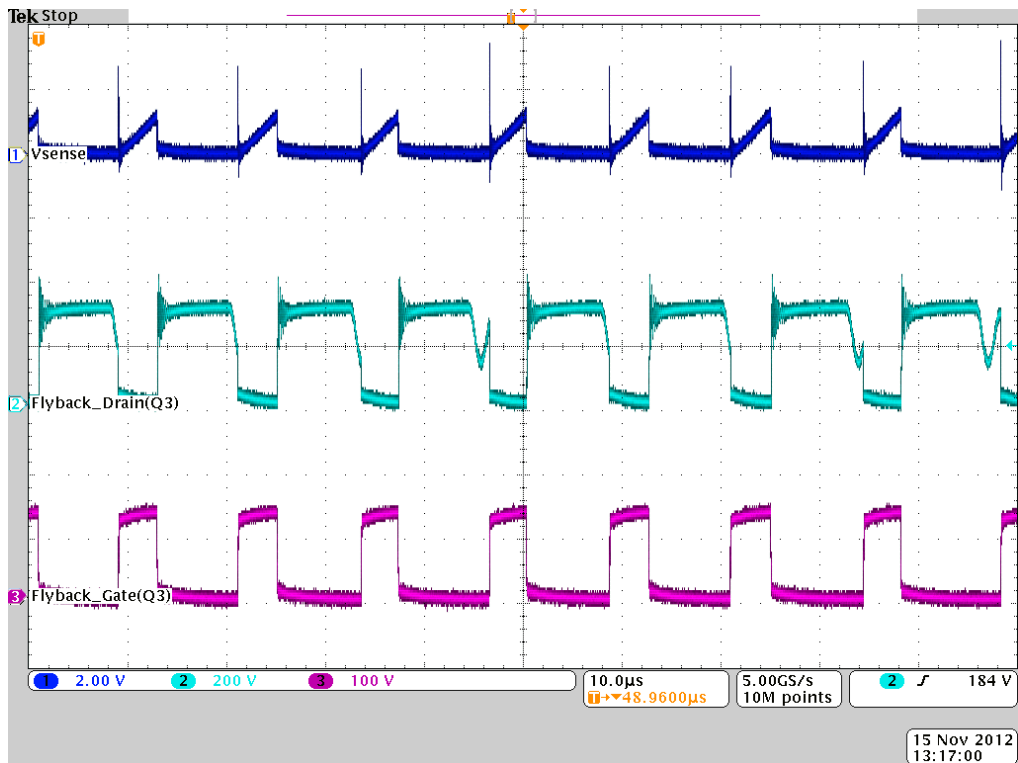


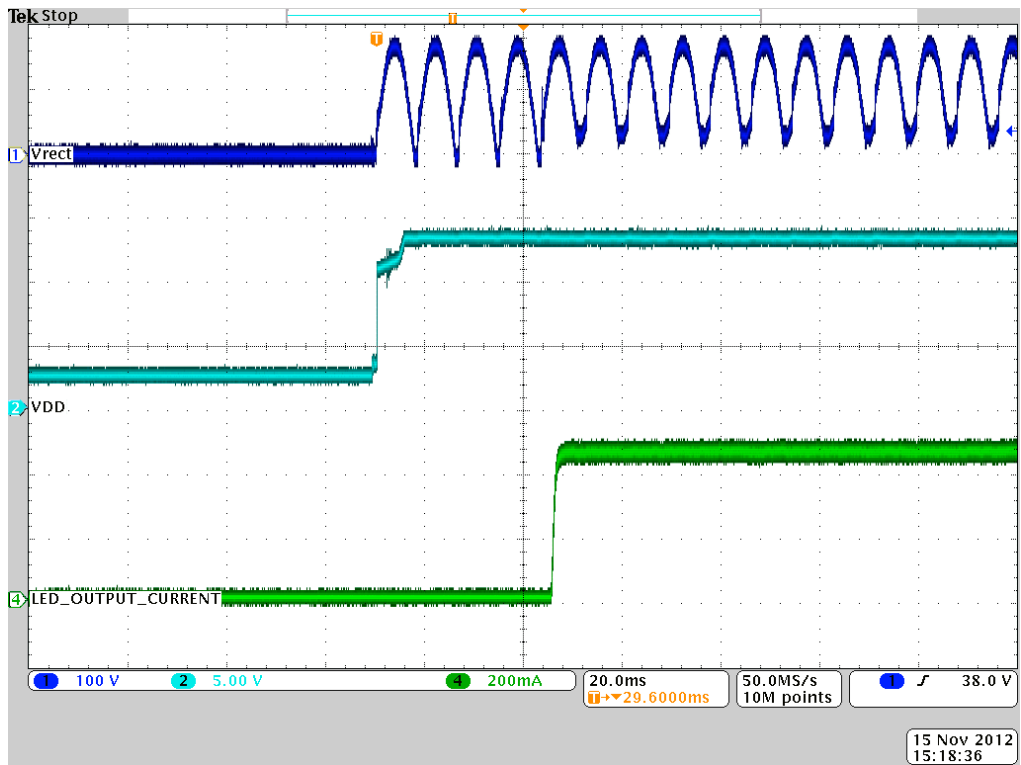


**Figure 14. No-dimmer Mode, Startup, 120VAC**

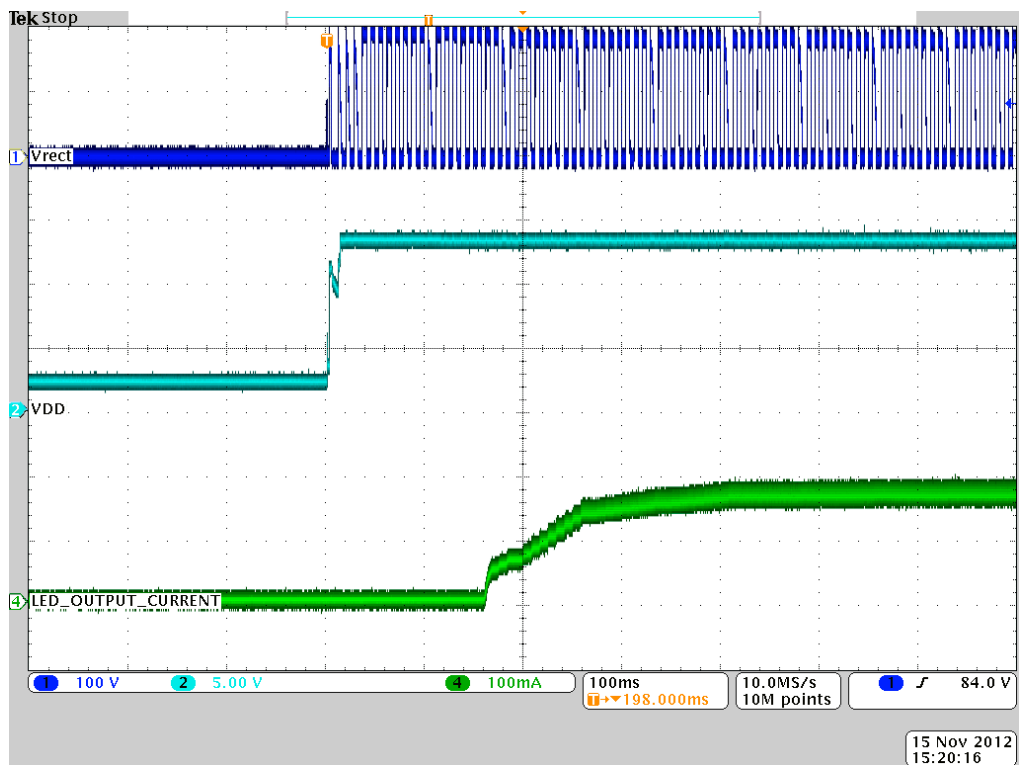


**Figure 15. No-dimmer Mode, Steady-state, 120VAC**


**Figure 16. Boost FET Q1 Waveform**

**Figure 17. Flyback FET Q3 Waveform**



**Figure 18. ILED at Maximum Dim Angle, Turn-on Waveforms**



**Figure 19. ILED at Medium Dim Angle, Turn-on Waveforms**

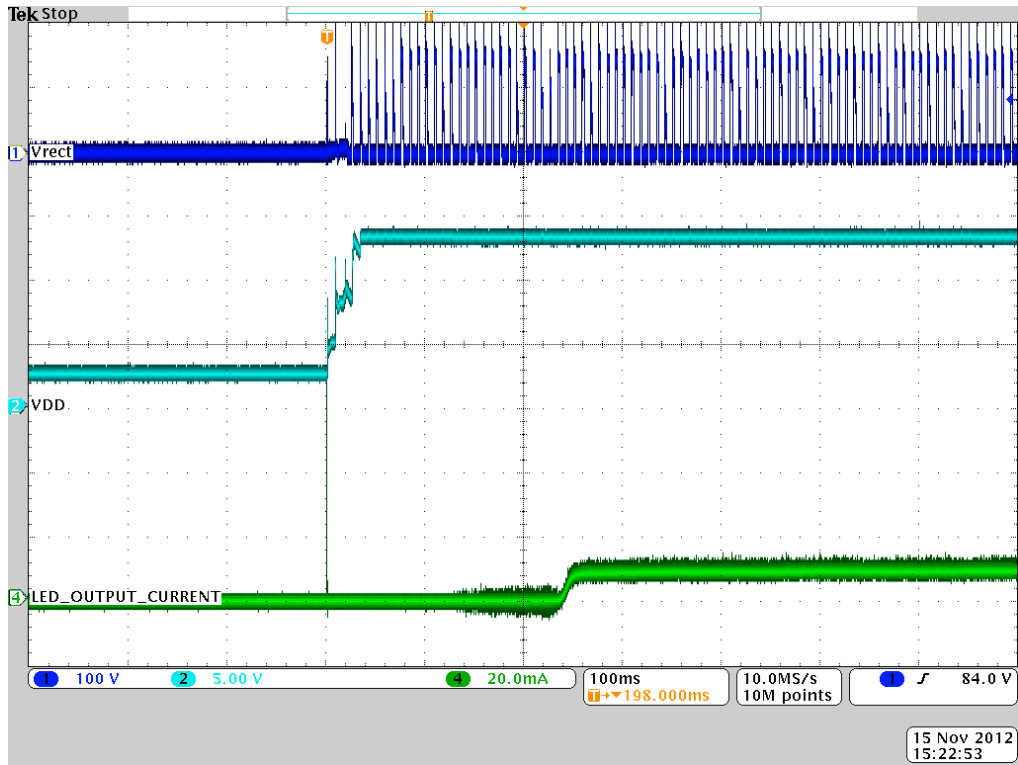


Figure 20. ILED at Minimum Dim Angle, Turn-on Waveforms

---

**8. REVISION HISTORY**

<b>Revision</b>	<b>Date</b>	<b>Changes</b>
DB1	FEB 2013	Initial Release.
DB2	MAR 2013	Context clarification
DB3	AUG 2013	PCBA revision B content clarification