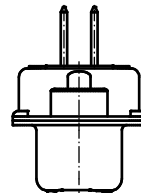
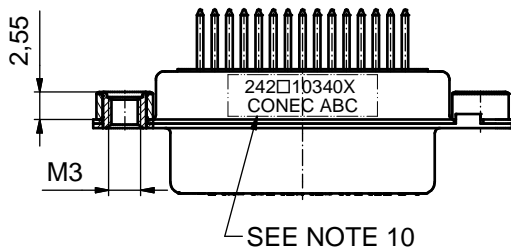
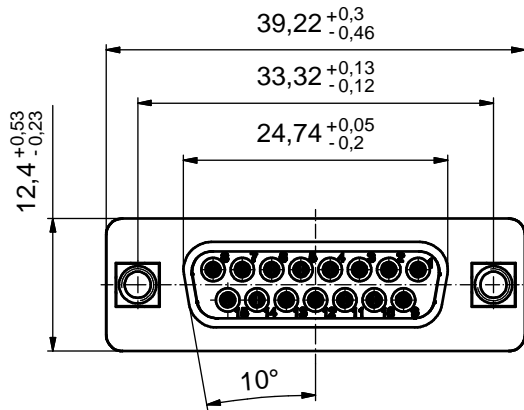
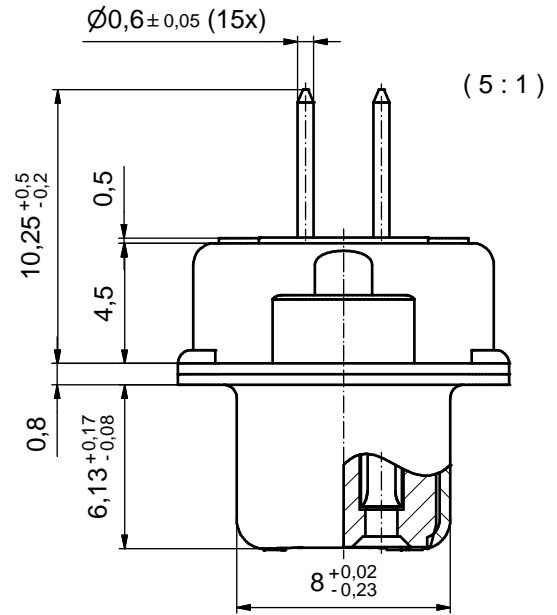
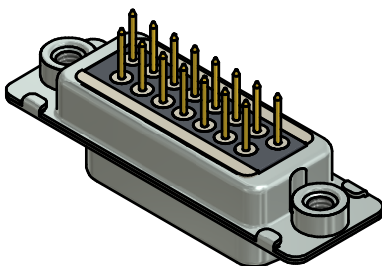


P.C.B. HOLE DRILLINGS
(P.C.B TOP SIDE)



NOTES:

1. FOR WAVESOLDERING (SOLDER BATH TEMPERATURE 260°C FOR 5 SEC. AND SOLDER PREHEAT 100°C FOR 30 SEC.)
2. METALSHELLS: STEEL; min. 315µin TIN over 40-80µin NICKEL
3. INSULATOR: HIGH TEMPERATURE PLASTIC UL 94 V-0; BLACK
4. CONTACTS: COPPER ALLOY; PLATING (SEE PART NO.):
 - PLEASE ADD A for GOLD FLASH over NICKEL (PREFERRED TYPE)
 - PLEASE ADD B for 20µin HARD GOLD over min. 50µin NICKEL
 - PLEASE ADD C for 30µin HARD GOLD over min. 50µin NICKEL
5. THREADED INSERTS: COPPER ALLOY; min. 200µin TIN over 80µin NICKEL
6. COLLARS: COPPER ALLOY; min 200µin TIN over 80µin NICKEL
7. DIELECTRIC WITHSTANDING VOLTAGE: 424 VDC
8. CAPACITANCE: 830pF ± 20%
9. MAXIMUM TORQUE VALUE FOR THREAD: 6 in.LB
10. CONNECTOR IS PART MARKED: 242□10340X CONEC ABC (see note 4)



Directive 2002/95/EC RoHS compliant

THIS DRAWING MAY NOT BE COPIED OR REPRODUCED IN ANY WAY, AND MAY NOT BE PASSED ON TO A THIRD PARTY WITHOUT WRITTEN PERMISSION. OWNERSHIP AND COPYRIGHT OF CONEC GmbH DO NOT ALTER CAD DRAWING BY HAND	tolerance		dim. in mm	scale: 2:1 (5:1)	
				material: SEE NOTES	
	drawn	18.11.13	Schmidt	title: D-SUB C-FILTER FEMALE 15pos. SOLDER PIN STRAIGHT with threaded insert	
	appd.	18.11.13	Lehmenkühler		
	norm				
d-old			dwg no:		DIN-A3
a	Original				sh: 1
rev.	description	date	name	part no: 242□10340X (see note 4)	