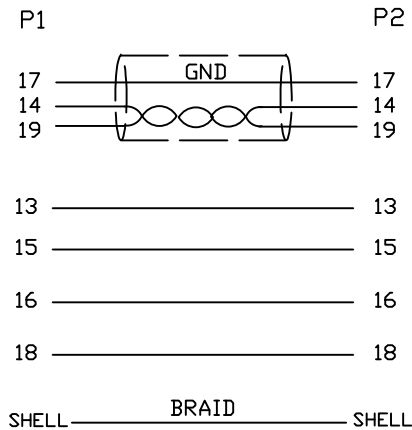
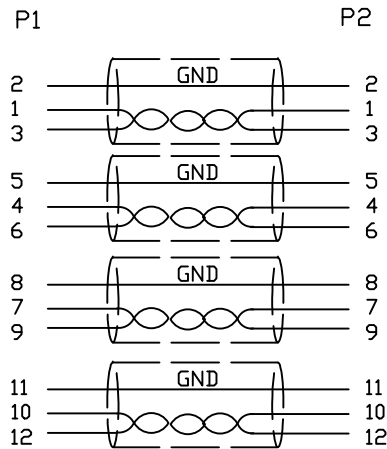


1.Wiring Diagram.



2.Cable test condition :

Open / Short : 100%

Insulation resistance : 5M ohms

Contact resistance : 2 ohm

Hipot : DC 300V / 1 sec

3.Each pcs with PE polybag.

| NO. | PART NO. | DESCRIPTION | QTY | UNIT/REF | APPROVAL | DATE | CUSTOMER P/N: | REV |
|------------------|----------|---|-----|----------|-------------------|------|-------------------------------------|-----|
| 5 | COPER | W20MM*L35MM | 2 | | | | | |
| 4 | PVC | 45P PVC BLACK OVERMOLD | 25g | | | | | |
| 3 | PE | LLDPE 500026 6201 INSIDE MOLDING | 16g | | | | | |
| 2 | CONN | HDMI A TYPE MALE PIN G/F ,SHELL PLATED G/F, INSULATION BLACK | 2 | P1.P2 | | | | |
| 1 | CABLE | UL20276 [28AWG (7/0.12TA) *IP+D(7/0.12TA)*1C+AL]*5+28AWG (7/0.12TA) *4C +AEM(16/6/0.12AM) OD7.3 BLACK | 1 | 5000mm | | | | |
| BILL OF MATERIAL | | | | | CnC Tech,LLC | | TITLE HDMI A/M TO HDMI A/M CABLE | |
| | | | | | DRAWN EDWINLAI | | DATE 2/28/17 | |
| | | | | | CHECKED Win.C | | DATE 2/28/17 | |
| | | | | | APPROVAL | | CUSTOMER P/N: 740-10011-00500 | |
| | | | | | APPROVAL | | CUSTOMER: SHEET 1 OF 1 | |

