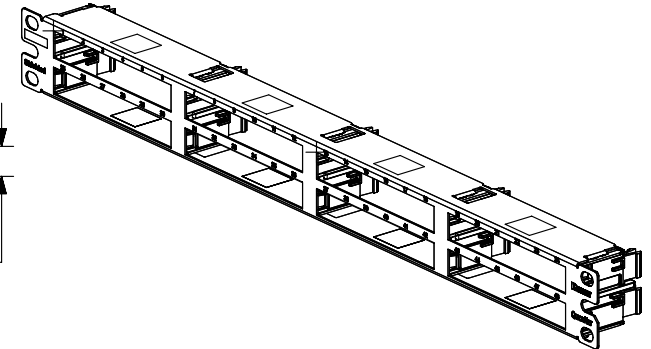
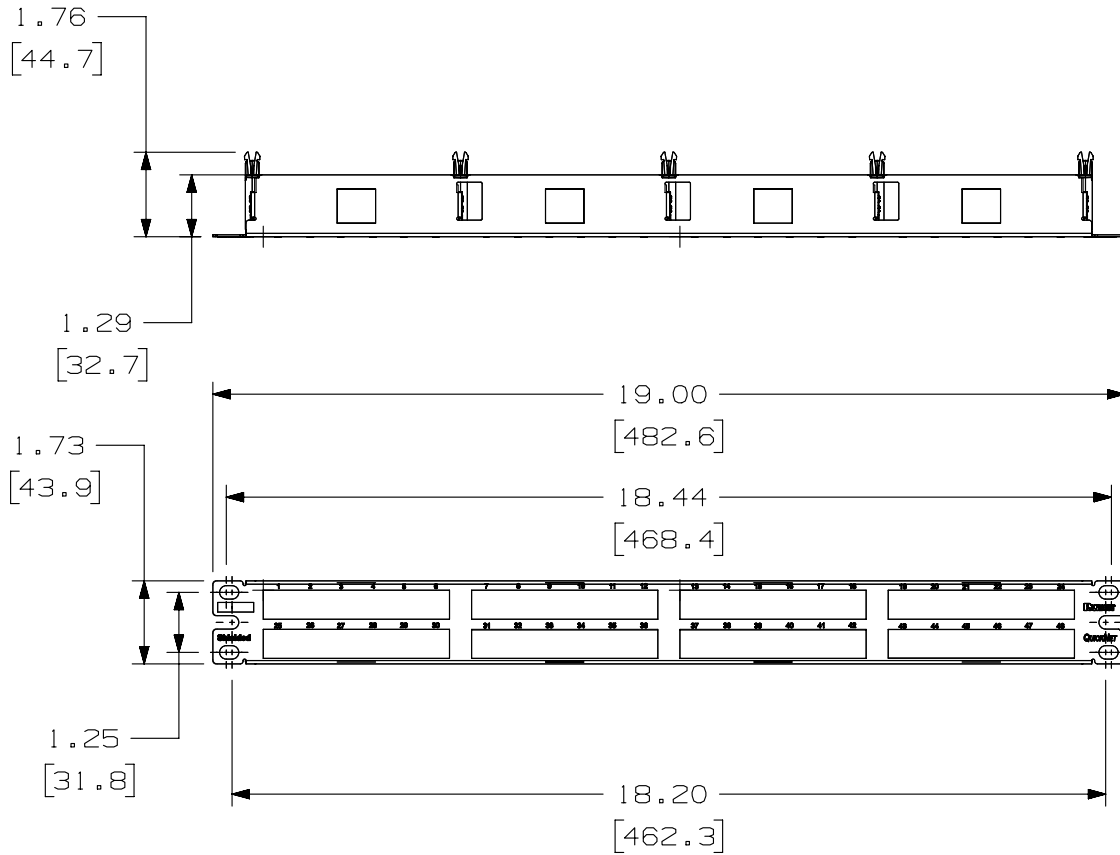


THIS COPY IS PROVIDED ON A RESTRICTED BASIS AND IS NOT TO BE USED IN ANY WAY DETRIMENTAL TO THE INTERESTS OF PANDUIT CORP.

PANDUIT PART NO.	WEIGHT (APPOX.)
QSP48HDBL	0.65 lb (294.8 g)

- NOTES:
- SEE CURRENT CATALOG FOR VARIOUS APPLICATIONS.
 - THE PATCH PANEL IS DESIGNED FOR MOUNTING TO 19" UNIVERSAL RACKS.
 - DIMENSIONS IN BRACKETS ARE IN METRIC.
 - PART INCLUDES:
 - 1- METAL STAMPING WITH SLIDE GUIDES
 - 1- SCREW KIT (INCLUDES FOUR #12-24 SCREWS)
 - 1- SCREW KIT (INCLUDES FOUR M6 SCREWS)



PART NUMBER		QSP48HDBL	
TITLE			
QUICKNET 48 PORT PATCH PANEL			
CUSTOMER DRAWING			
ITEM REVISION NAME		M02816AC/02	
DATASET FILE NAME		M02816AC_DC17/02A	
UNLESS OTHERWISE SPECIFIED, DIMENSIONAL TOLERANCES ARE: IN [mm]		MATERIAL:	
.x ± .xxx ± .010 [.3]		PANEL: C.R.S.	
.xx ± .03 [.8] ANGLES ±		GUIDES: ABS	
DRAWN BY		DRAWING NUMBER:	
BJN		02816-17	
DATE		SHT 1 OF 1	
7-26-12		A	
CHK		SCALE	
WFMI		.25 TO 1	
THIRD ANGLE PROJECTION			

REV	DATE	BY	CHK	APR	DESCRIPTION	ECN
1	5-8-14	BJN	JSP	TMBA	REVISED & REDRAWN PREVIOUS REVISIONS REMVD FOR CLARITY	02816-17

D10100DA/14

2

1

2

1