

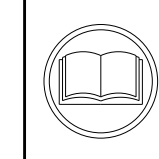
ATLANTIC VERSION TERMINATOR INTERFACE ADAPTER	PART NUMBER	REVISION	DESCRIPTION	FEED TYPE	APPLICATOR STYLE CONVERSION CHART						
					CONVERT TO	PART NUMBERS REQUIRED					
	2151809-2	C	FINE CRIMP HEIGHT ADJUST	PNEUMATIC	-	-	-	-	-	-	
	2151809-5	C	FINE CRIMP HEIGHT ADJUST	SERVO LATCH PLATE	SERVO LATCH PLATE	2119951-1	-	8-2151809-5	1901094-3	2-1752354-6	2168400-6 (QUANTITY 2)
	2151809-6	C	NON-CRIMP HEIGHT ADJUST	SERVO LATCH PLATE	PNEUMATIC FEED	2119950-1	1338685-1	5-18022-5	2119641-1	2119799-1	2063440-1
	2151809-7	C	FINE CRIMP HEIGHT ADJUST	NONE	-	-	-	-	-	-	-
	7-2151809-7	A	CRIMP TOOLING KIT	-	-	-	-	-	-	-	-

APPLICATOR DATA		
CRIMP	SIZE	TYPE
WIRE	4.06 mm [1.60]	F
INSUL	-	-

APPLICATOR INSTRUCTIONS
408-10389

TERMINAL DATA: MULTI-CONTACT TERMINAL TE CRIMP SPECIFICATION			
TERMINAL NAME: TERMINAL			
WIRE STRIP LENGTH		INSULATION DIAMETER RANGE	
4.58-4.96 mm [1.80-.195 IN]		-	
TERMINAL APPLICATION SPECIFICATION	NONE	-	-
TERMINALS APPLIED			
TE TERMINAL	MULTI-CONTACT TERMINAL	TE TERMINAL	MULTI-CONTACT TERMINAL
1949881-1	32.0016P2000-UR	1949880-1	32.0017P2000-UR

WIRE SIZE	CRIMP HEIGHT mm [INCH]	CRIMP HEIGHT REFERENCE SETTING
6.00mm2	2.56 +/- 0.05 [1.01 +/- .002]	4.3
4.00mm2	2.17 +/- 0.05 [1.085 +/- .002]	8.2



- RECOMMENDED SPARE PARTS
- GREASE BEARING SURFACES LIGHTLY
- 3. LUBRICATE DAILY PER THE APPLICATOR INSTRUCTION SHEET SUPPLIED WITH THE APPLICATOR.
- APPLICATOR SPECIFIC DATA TO BE ENTERED INTO BLANK MEMORY CHIP AT ASSEMBLY. SEE BELOW FOR PART NUMBER:
 PNEUMATIC FEED WITH "SMART APPLICATOR" CONVERSION: 8-2151809-4
 SERVO FEED WITH "FINE CRIMP HEIGHT ADJUST": 8-2151809-5
 SERVO FEED WITH "NON-CRIMP HEIGHT ADJUST": 8-2151809-6
- 5. ADJUSTMENT OF THE STRIPPER MAY BE REQUIRED WHEN MOVING THE APPLICATOR BETWEEN BENCH AND LEADMAKER APPLICATIONS.
- APPLY PART NUMBER 1-23419-5 LOCTITE TO THREADS OF ITEM 62. FOR -6 ONLY APPLY PART NUMBER 1-23419-5 LOCTITE TO THREADS OF ITEM 37.
- GREASE THREADS, GROOVE AND O-RING ON ITEMS 35 & 252.
- MAGNET, ITEM 166 MUST BE ORIENTED CORRECTLY IN ORDER TO PROPERLY ACTUATE THE COUNTER.
- CRIMP HEIGHT REFERENCE SETTING WAS THE SETTING USED WHEN THE APPLICATOR WAS QUALIFIED AT THE FACTORY. ADJUSTMENT MAY BE NECESSARY WHEN RUNNING APPLICATOR IN THE FIELD.
- TERMINAL PITCH NOT COMPATIBLE WITH MECHANICAL FEED.
- TO CONVERT THE APPLICATOR TO A NON-CARRIER CUTTING STYLE, REMOVE ITEM 13 AND ATTACH TO THE LOCATION ON THE BACK SIDE OF THE HOUSING. REFER TO INSTRUCTION SHEET FOR ADDITIONAL INFORMATION.
- WHEN ASSEMBLING A NON CRIMP HEIGHT ADJUST APPLICATOR (-6) USE SHIMS FROM ITEM 260 TO ACHIEVE A NOMINAL SHIM HEIGHT OF 4.31.
- CUT TO LENGTH AT ASSEMBLY.

***WARNING**
 ON INSTALLATION, SET WIRE DISC, ITEM 40 TO LARGEST WIRE SIZE SETTING. USE OF SETTINGS BELOW MINIMUM REQUIRED CRIMP HEIGHT SETTING WILL CAUSE DAMAGE TO CRIMP TOOLING.

- 2	2	2	2	2168083-1	SCR, SKT HD CAP, RoHS, M3 X 8.0	269	
- 1	1	1	1	1633782-2	FENCE	267	
- -	-	-	-	2119957-2	APPLICATOR SHIM PACK	260	
- 1	-	-	1	8-21084-0	O-RING, .676 ID, .070 DIA. MAT.	252	
- -	-	-	-	2119640-1	PUSH ROD, AIR FEED	250	
- -	-	-	-	2079988-1	BUSHING, LCH5-12, MISUMI	249	
- -	-	-	-	2119641-1	FEED CAM, AIR FEED	248	
- 1	-	-	1	2119798-1	DETENT PIN	247	
- 1	-	-	1	1-22279-3	SPRING, COMPRESSION	246	
-77	-7	-6	-5	-2	PART NO	DESCRIPTION	ITEM NO

ATLANTIC VERSION
 Shown on sheets 1 of 4 & 2 of 4
 (Pacific version shown on sheets 3 of 4 & 4 of 4)

SET UP GAUGE	LOC	DIST	REVISIONS					
2119599-1	A	66	P	LTN	DESCRIPTION	DATE	OWN	APVD
			B		ECR-16-001118	25JAN2016	MR	GB
			C		ECR-16-004766	01APR2016	XZ	CT

- -	1	-	-	2119758-1	RAM, AMP STYLE, SIDE FEED, NON-ADJ.	245	
- 1	1	1	1	7-18023-7	SCR, SKT HD CAP M3 X 4.0	241	
- -	-	2	2	2168400-6	SHCS, LOW HEAD, RoHS, M5 X 16	240	
- -	-	-	-	2063440-1	AIR FEED MODULE	238	
- -	1	1	-	2119740-2	TAG, IDENTIFICATION	213	
- -	1	1	-	1901094-3	SPACER, FEEDER	198	
- -	-	-	-	21045-3	RING, RETAIN, EXTERN, 3/16 CRESCENT	172	
- 1	1	1	1	994969-1	MAGNET, RARE EARTH HIGH ENERGY	166	
- REF	REF	REF	REF	994970-2	COUNTER, MAGNETIC	164	
- -	-	-	-	240638-1	SPRING, FEED FINGER	163	
- -	-	-	-	3-23627-7	PIN, RETAIN, GRVD, 3/16 X .854	137	
- -	-	-	-	2119799-1	HOLDER, FEED FINGER, AF	136	
- -	REF	REF	-	SEE NOTE 4	MEMORY CHIP, PROGRAMMED	135	
- -	1	1	-	1633743-1	SERVO FEED LATCH ASM	133	
- 1	1	1	1	1-22281-8	SPRING, COMPRESSION	121	
- 1	1	1	1	1-18028-2	WASHER, FLAT, REG M4	119	
- -	REF	REF	-	2119944-1	FEED FINGER ASSEMBLY, SF	117	
- 1	1	1	1	1-690438-0	FRONT STRIP GUIDE	96	
- 2	2	2	2	2168083-1	SCR, SKT HD CAP, RoHS, M3 X 8.0	95	
- 1	1	1	1	2168083-6	SCR, SKT HD CAP, RoHS, M5 X 65	93	
- 1	1	1	1	455888-3	SPACER, CRIMPER	82	
- 2	2	2	2	2079383-4	SCR, BHSC, RoHS (M4 X 8)	79	
- 1	1	1	1	1633470-2	EXTENSION PLATE	78	
- 1	1	1	1	2119956-1	DOCUMENTATION PACKAGE	71	
- 1	-	-	-	2119740-1	TAG, IDENTIFICATION	67	
- 2	2	2	2	2168078-1	SCREW, DRIVE, RH, RoHS, 2 x .188	66	
- 1	-	-	-	2119793-1	LIMITER, ADJUSTMENT BOLT	63	
- 3	-	3	3	992763-5	SCR, SET, SOC, CONE POINT, M3 X 4.0	62	
- 2	2	2	2	2-18032-5	SCR, SET, FLT POINT M5 X 20.0	61	
- 1	1	1	1	2079383-4	SCR, BHSC, RoHS (M4 X 8)	60	
- -	-	-	-	5-18022-5	SCR, HEX HD CAP, M4 X 6.0	59	
- -	-	-	-	1338685-1	PAWL, FEED	56	
- 4	4	4	4	2168400-1	SHCS, LOW HEAD, RoHS, M4 X 12	54	
- 2	2	2	2	2168083-3	SCR, SKT HD CAP, RoHS, M4 X 12.0	53	
- 1	1	1	1	5018030-1	NUT, HEX, REG, RoHS, M3	52	
- 1	1	1	1	811242-6	BUMPER, HOLD DOWN	51	
- 1	1	1	1	690753-2	SPACER, TONKER	50	
- -	-	-	-	18023-9	SCR, SKT HD CAP M4 X 6.0	49	
- 1	1	1	1	2119656-9	APPLICATOR BASIC ASSEMBLY, SF	46	
- 1	-	-	-	2119370-1	RAM, AMP STYLE, SIDE FEED	44	
- 1	1	1	1	2079383-7	SCR, BHSC, RoHS (M8 X 25)	41	
- 1	-	-	-	2119645-1	DISC, NUMBERED FA WIRE ADJUSTMENT	40	
- 1	-	-	-	2119957-1	APPLICATOR SHIM PACK	39	
- 1	1	1	1	2119644-1	RAM WASHER, PRECISION	38	
- 1	1	1	1	2119085-1	FA HEAD, ATLANTIC STYLE	37	
- 1	-	-	-	2119092-1	BOLT, ADJUSTMENT	35	
- 1	1	1	1	1752356-4	SUPPORT, TERMINAL	34	
- 2	2	2	2	2079383-5	SCR, BHSC, RoHS (M4 X 20)	33	
- 1	1	1	1	2161328-1	HEX HEAD, FLANGED, M5 X 8mm LONG	32	
- 1	1	1	1	1320908-8	SPACER, STRIP GUIDE	30	
- 1	1	1	1	1901086-1	PLATE, STRIP GUIDE	29	
- 1	1	1	1	1-455888-0	SPACER, CRIMPER	28	
- 2	2	2	2	22281-8	SPRING, COMPRESSION	27	
- 1	1	1	1	356835-1	LEVER, DRAG RELEASE	26	
- 1	1	1	1	240792-1	DRAG, TERMINAL	25	
- 1	1	1	1	1320928-4	STRIP GUIDE	24	
- 1	1	1	1	980371-4	SCR, SKT HD SHLDR 5.0 DIA X 6.0	23	
- 1	1	1	1	2168083-2	SCR, SKT HD CAP, RoHS, M4 X 8.0	21	
- 1	1	1	1	1-18028-2	WASHER, FLAT, REG M4	20	
- 1	1	1	1	2119533-1	STRIPPER, SIDE FEED	19	
- 1	1	1	1	2119806-1	INSERT, SHEAR	13	
- 1	1	1	1	3-22280-3	SPRING, COMPRESSION	12	
- 1	1	1	1	1-356885-3	STOP, SHEAR	11	
- 1	1	1	1	2119805-1	SHEAR HOLDER, FRONT	10	
- 1	1	1	1	318707-4	FLOATING SHEAR, FRONT	9	
1	1	1	1	1-1633933-4	ANVIL, COMBINATION	8	
- -	-	-	-	-	-	7	
- -	-	-	-	-	-	6	
- 1	1	1	1	1-2119757-0	DEPRESSOR, SHEAR	5	
- -	-	-	-	-	-	4	
- -	-	-	-	-	-	3	
- -	-	-	-	-	-	2	
1	1	1	1	1-456414-1	CRIMPER, WIRE	1	
-77	-7	-6	-5	-2	PART NO	DESCRIPTION	ITEM NO

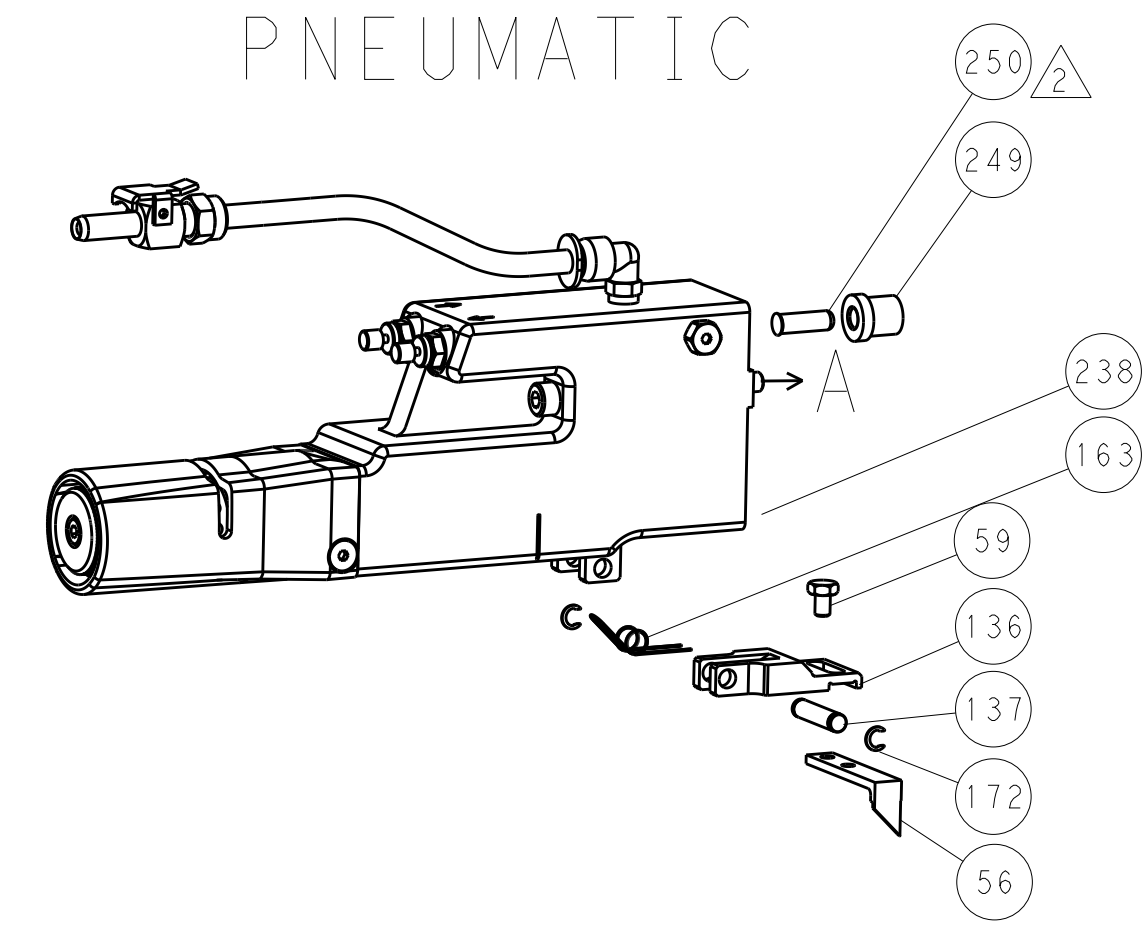
DIMENSIONS:		TOLERANCES UNLESS OTHERWISE SPECIFIED:		DRAWING NO		DATE	
mm	0 PLC	±		28NOV2012	28NOV2012		
	1 PLC	±		28NOV2012	28NOV2012		
	2 PLC	±		28NOV2012	28NOV2012		
	3 PLC	±		28NOV2012	28NOV2012		
	4 PLC	±		28NOV2012	28NOV2012		
	ANGLES	±		28NOV2012	28NOV2012		
	FINISH	±		28NOV2012	28NOV2012		

APVD	S. XI	28NOV2012	NAME	Ocean Side Feed Applicator	
PRODUCT SPEC			SIZE	CAGE CODE	DRAWING NO
APPLICATION SPEC			A1	00779	2151809
MATERIAL			WEIGHT	Customer Accessible Production Drawing	
			SCALE	1:1	SHEET 1 of 4

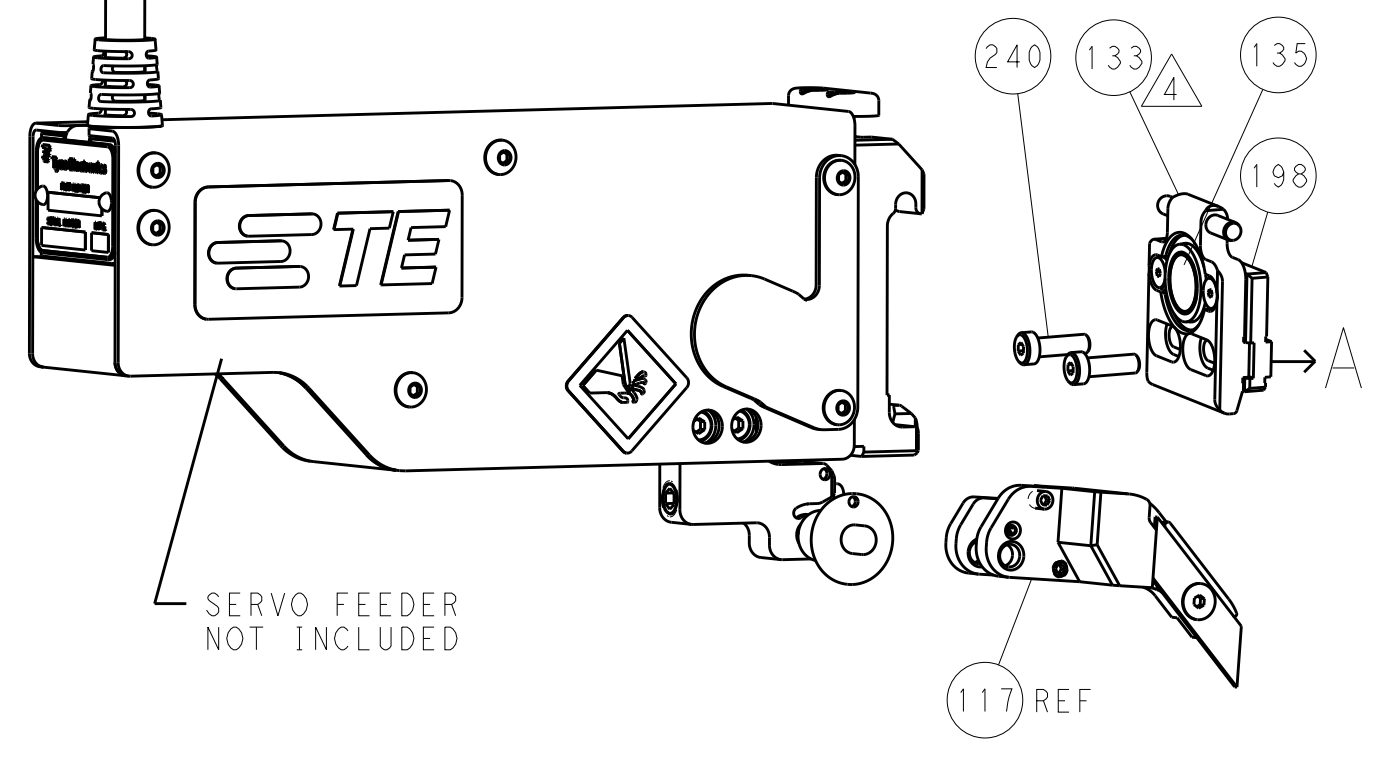
LOC		DIST		REVISIONS			
A	66	P	LTM	DESCRIPTION	DATE	DWN	APVD
-	-	-	-	SEE SHEET 1	-	-	-

FEED TYPE

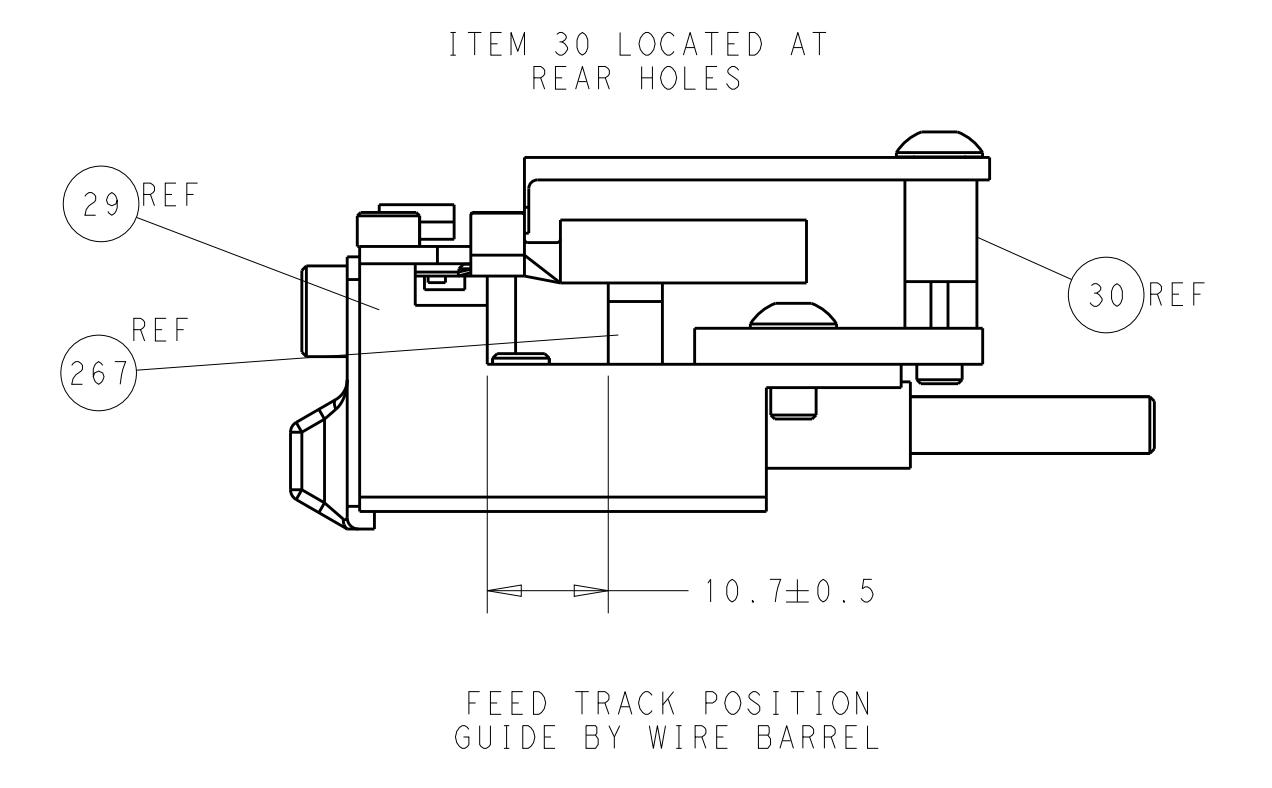
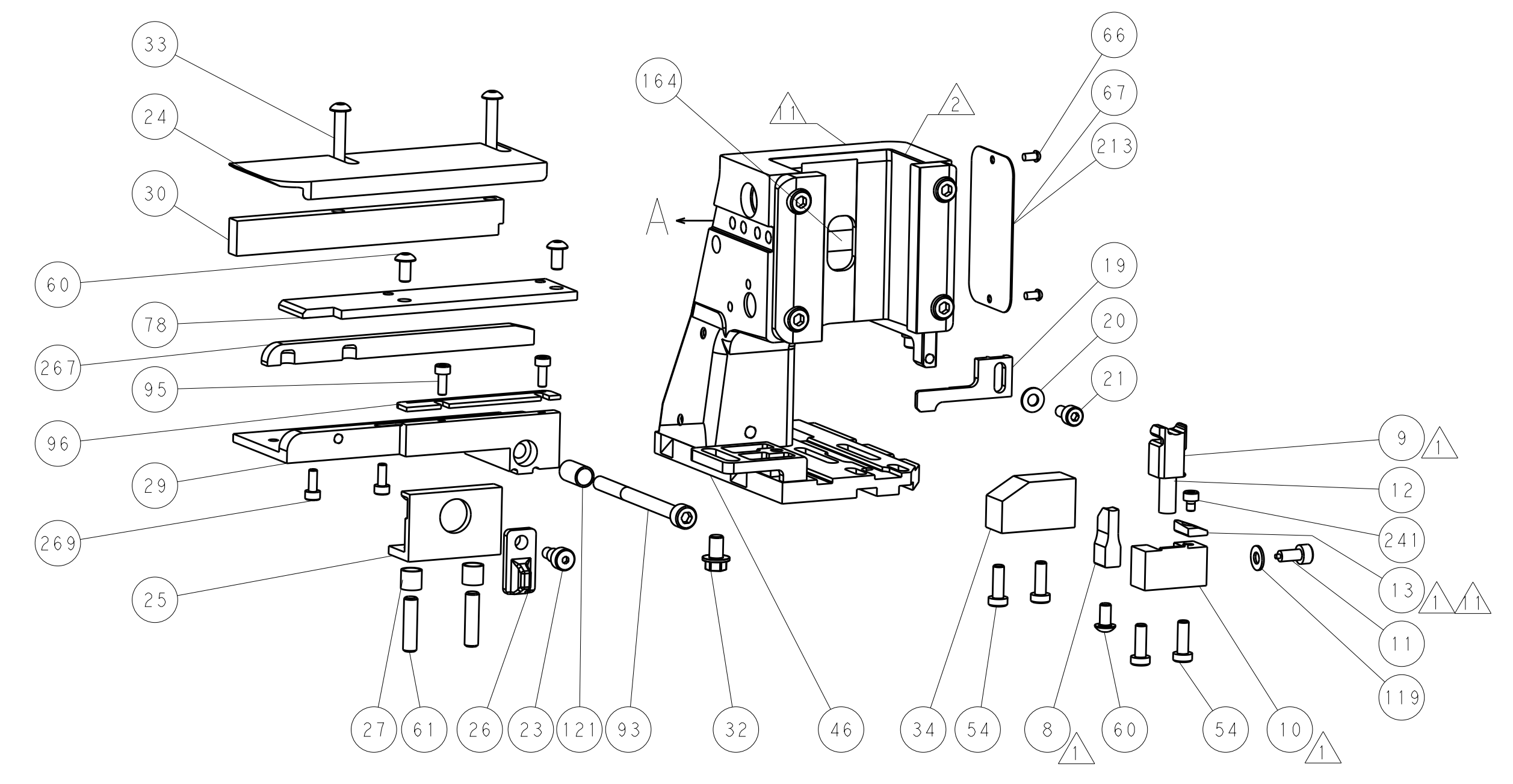
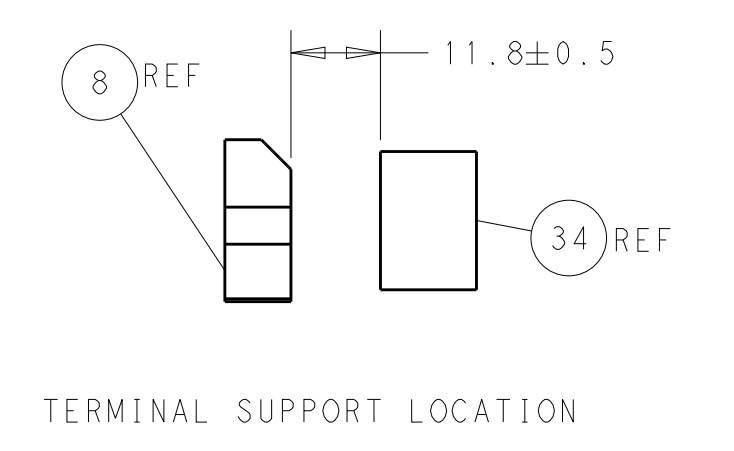
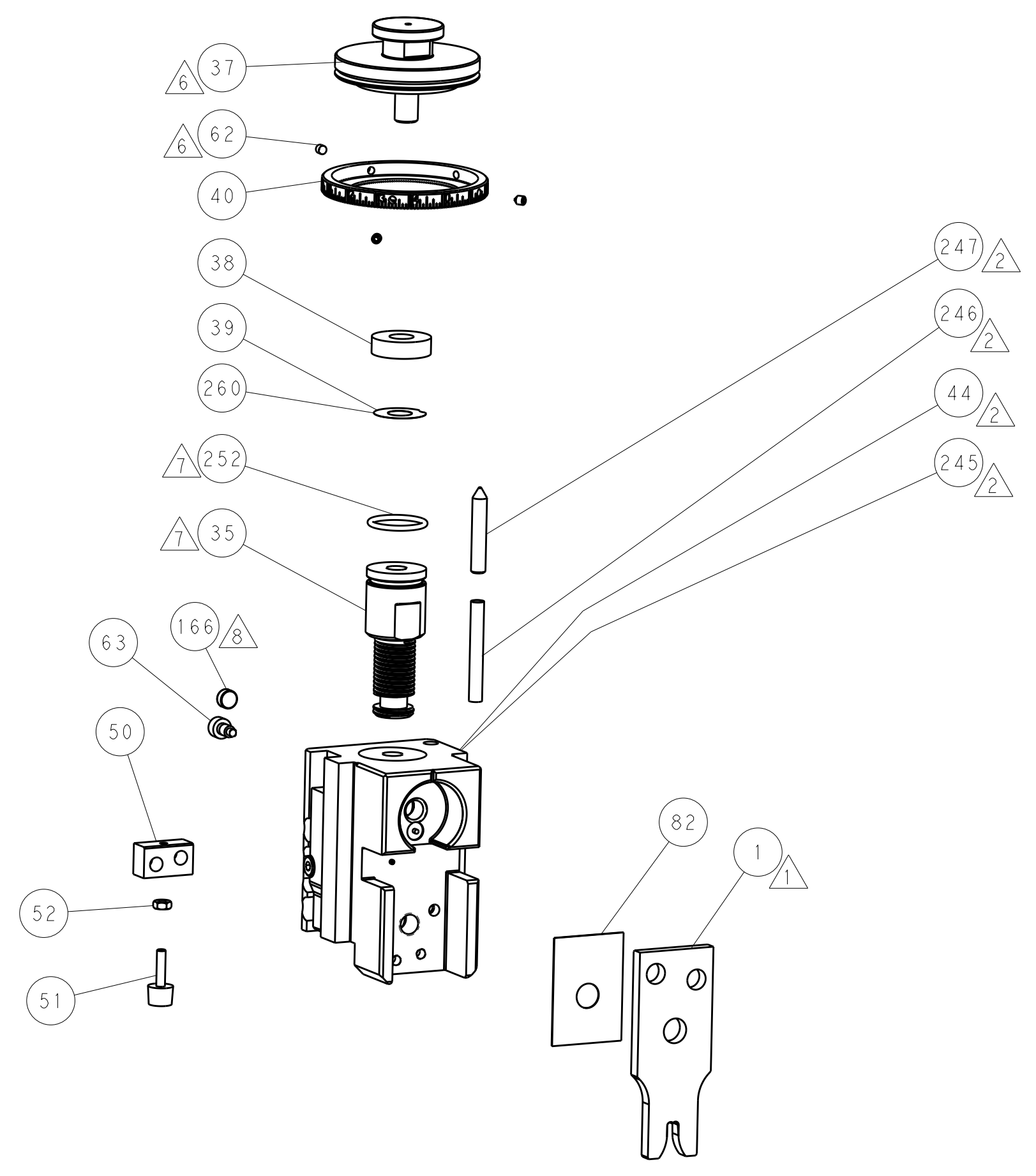
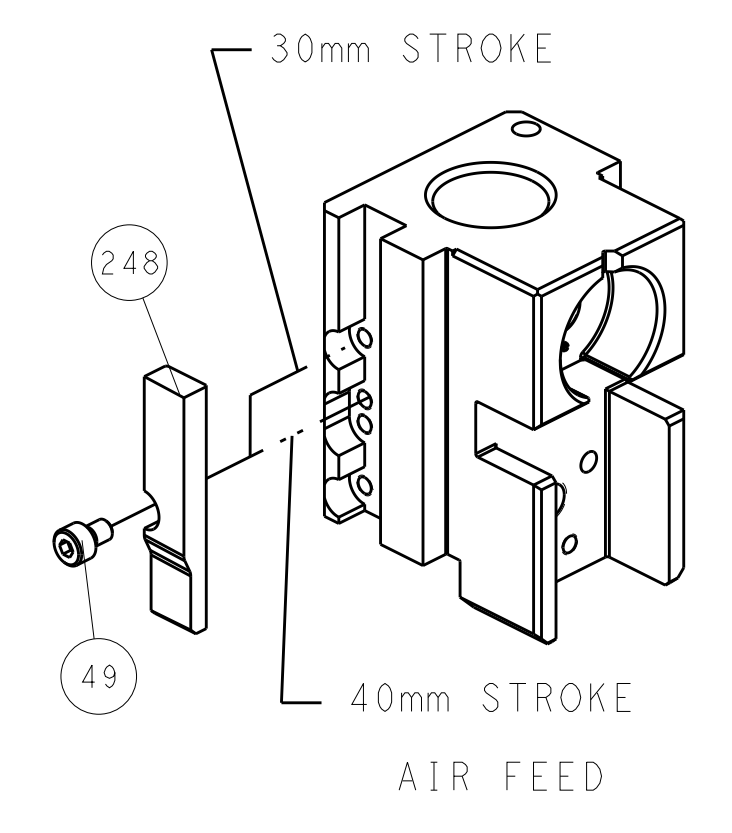
PNEUMATIC



SERVO LATCH PLATE



CAM POSITION



ATLANTIC VERSION
 Shown on sheets 1 of 4 & 2 of 4
 (Pacific version shown on sheets 3 of 4 & 4 of 4)

DIMENSIONS:		TOLERANCES UNLESS OTHERWISE SPECIFIED:		DWN R. HUANG 28NOV2012		TE Connectivity Harrisburg, PA 17105-3608	
mm	0 PLC ±	1 PLC ±	2 PLC ±	3 PLC ±	4 PLC ±	NAME Ocean Side Feed Applicator	RESTRICTED TO
ANGLES	FINISH	WEIGHT	SCALE	1:2	SHEET 2 OF 4	REV C	
MATERIAL		CUSTOMER ACCESSIBLE PRODUCTION DRAWING		CAGE CODE DRAWING NO A11 00779 ©=2151809			

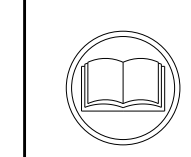
PACIFIC VERSION TERMINATOR INTERFACE ADAPTER	PART NUMBER	REVISION	DESCRIPTION	FEED TYPE
	2-2151809-2	C	FINE CRIMP HEIGHT ADJUST	PNEUMATIC
	2-2151809-5	C	FINE CRIMP HEIGHT ADJUST	SERVO LATCH PLATE Δ
	2-2151809-7	C	FINE CRIMP HEIGHT ADJUST	NONE
	7-2151809-7	A	CRIMP TOOLING KIT	-

APPLICATOR DATA		
CRIMP	SIZE	TYPE
WIRE	4.06 mm [1.60]	F
INSUL	-	-

APPLICATOR INSTRUCTIONS
408-10389

TERMINAL DATA: MULTI-CONTACT TERMINAL TE CRIMP SPECIFICATION			
TERMINAL NAME: TERMINAL			
WIRE STRIP LENGTH		INSULATION DIAMETER RANGE	
4.58-4.96 mm [1.80-.195 IN]		Ø	
TERMINAL APPLICATION SPECIFICATION	NONE	-	-
TERMINALS APPLIED Δ			
TE TERMINAL	MULTI-CONTACT TERMINAL	TE TERMINAL	MULTI-CONTACT TERMINAL
1949881-1	32.0016P2000-UR	1949880-1	32.0017P2000-UR

WIRE SIZE	CRIMP HEIGHT mm [INCH]	CRIMP HEIGHT REFERENCE SETTING
6.00mm ²	2.56+/-0.05 [1.01+/-0.02]	4.3
4.00mm ²	2.17+/-0.05 [1.085+/-0.02]	8.2



- Δ RECOMMENDED SPARE PARTS
- Δ GREASE BEARING SURFACES LIGHTLY
- 3. LUBRICATE DAILY PER THE APPLICATOR INSTRUCTION SHEET SUPPLIED WITH THE APPLICATOR.
- Δ APPLICATOR SPECIFIC DATA TO BE ENTERED INTO BLANK MEMORY CHIP AT ASSEMBLY. SEE BELOW FOR PART NUMBER:
PNEUMATIC FEED WITH "SMART APPLICATOR" CONVERSION: 8-2151809-4
SERVO FEED WITH "FINE CRIMP HEIGHT ADJUST": 8-2151809-5
- 5. ADJUSTMENT OF THE STRIPPER MAY BE REQUIRED WHEN MOVING THE APPLICATOR BETWEEN BENCH AND LEADMAKER APPLICATIONS.
- Δ APPLY PART NUMBER 1-23419-5 LOCTITE TO THREADS OF ITEM 62.
- Δ GREASE THREADS, GROOVE AND O-RING ON ITEMS 139 & 152.
- Δ MAGNET MUST BE ORIENTED CORRECTLY IN ORDER TO PROPERLY ACTUATE THE COUNTER.
- Δ CRIMP HEIGHT REFERENCE SETTING WAS THE SETTING USED WHEN THE APPLICATOR WAS QUALIFIED AT THE FACTORY. ADJUSTMENT MAY BE NECESSARY WHEN RUNNING APPLICATOR IN THE FIELD.
- Δ TERMINAL PITCH NOT COMPATIBLE WITH MECHANICAL FEED.
- Δ TO CONVERT THE APPLICATOR TO A NON-CARRIER CUTTING STYLE, REMOVE ITEM 13 AND ATTACH TO THE LOCATION ON BACK SIDE OF THE HOUSING. REFER TO INSTRUCTION SHEET FOR ADDITIONAL INFORMATION.
- Δ CUT TO LENGTH AT ASSEMBLY.

APPLICATOR STYLE CONVERSION CHART									
CONVERT TO	PART NUMBERS REQUIRED								
-	-	-	-	-	-	-	-	-	-
SERVO LATCH PLATE	2119951-1	-	8-2151809-5	1901094-3	2-1752354-6	2168400-6 (QUANTITY 2)			
SMART APPLICATOR	2161326-1	-	8-2151809-4	-	-	-			
PNEUMATIC FEED	2119950-1	1338685-1	5-18022-5	2119641-2	2119799-1	2063440-1			

***WARNING**
ON INSTALLATION, SET WIRE DISC, ITEM 40 TO LARGEST WIRE SIZE SETTING. USE OF SETTINGS BELOW MINIMUM REQUIRED CRIMP HEIGHT SETTING WILL CAUSE DAMAGE TO CRIMP TOOLING.

-	2	2	2	2168083-1	SCR, SKT HD CAP, RoHS, M3 X 8.0	269
-	1	1	1	1633782-2	FENCE	267
-	1	1	1	2119782-1	FINE ADJUST HEAD ASM, PACIFIC STYLE	251
-	-	-	1	2119640-1	PUSH ROD, AIR FEED	250
-	-	-	1	2079988-1	BUSHING, LCH5-12, MISUMI	249
-	1	1	1	1-22279-3	SPRING, COMPRESSION	246
-	1	1	1	7-18023-7	SCR, SKT HD CAP M3 X 4.0	241
-77	-27	-25	-22	PART NO	DESCRIPTION	ITEM NO

PACIFIC VERSION
Shown on sheets 3 of 4 & 4 of 4
(Atlantic version shown on sheets 1 of 4 & 2 of 4)

SET UP GAUGE	LOC	DIST	REVISIONS			
2119599-1	A	66	REV	DATE	BY	APPV
-	-	-	1	SEE SHEET 1	-	-

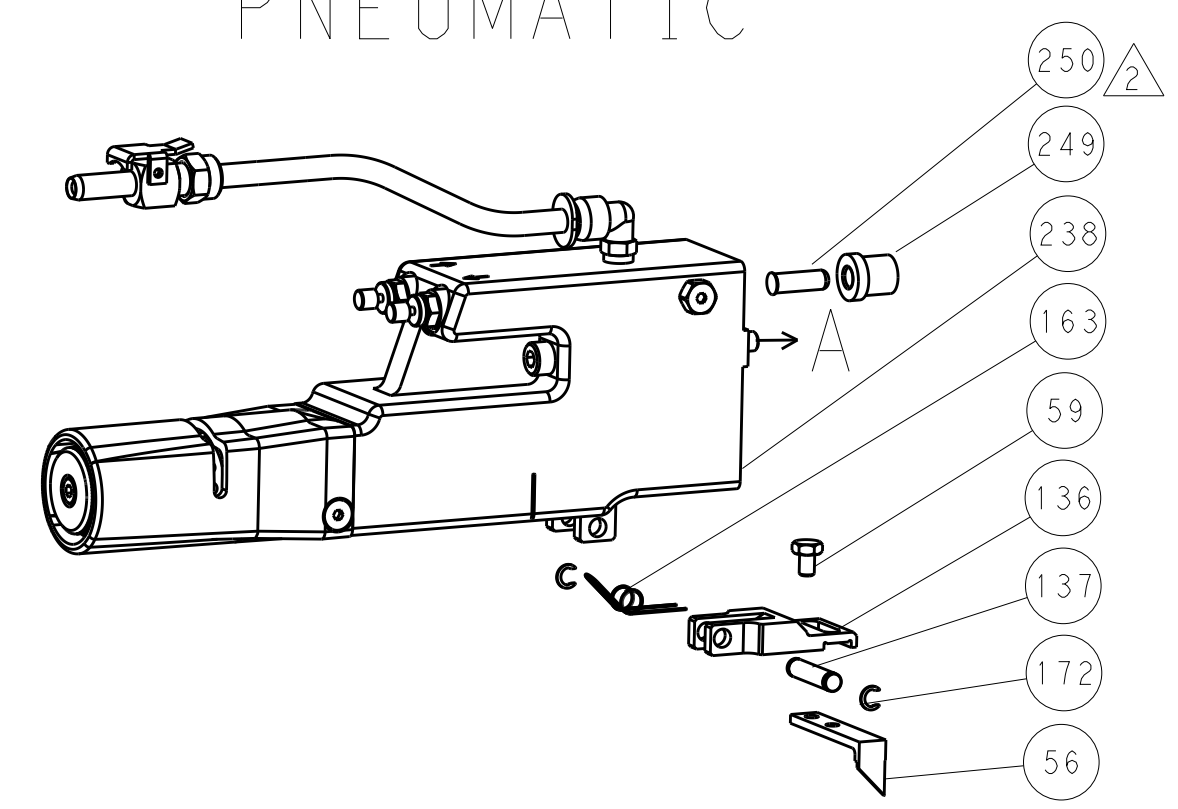
-	-	2	-	2168400-6	SHCS, LOW HEAD, RoHS, M5 X 16	240
-	-	-	1	2063440-1	AIR FEED MODULE	238
-	-	-	1	2119740-2	TAG, IDENTIFICATION	213
-	-	-	1	1901094-3	SPACER, FEEDER	198
-	-	-	2	21045-3	RING, RETAIN, EXTERN, 3/16 CRESCENT	172
Δ	-	1	1	994969-1	MAGNET, RARE EARTH HIGH ENERGY	166
-	REF	REF	REF	994970-2	COUNTER, MAGNETIC	164
-	-	-	1	240638-1	SPRING, FEED FINGER	163
Δ	-	1	1	8-21084-1	O-RING, .801 ID, .070 DIA. MAT.	152
-	-	-	1	2119641-2	FEED CAM, AIR FEED	151
-	-	1	1	2119798-2	DETENT PIN	145
-	-	1	1	2079383-8	SCR, BHSC, RoHS (M4 X 16)	144
-	-	4	4	2168400-5	SHCS, LOW HEAD, RoHS, M4 X 20	143
-	-	1	1	1-2119656-0	APPLICATOR BASIC ASSEMBLY, SF	141
Δ	-	1	1	2119650-1	RAM, ASIAN STYLE, SIDE FEED	140
-	-	1	1	2119092-2	BOLT, ADJUSTMENT	139
-	-	-	1	3-23627-7	PIN, RETAIN, GRVD, 3/16 X .854	137
-	-	-	1	2119799-1	HOLDER, FEED FINGER, AF	136
-	-	REF	-	SEE NOTE 4	MEMORY CHIP, PROGRAMMED	135
-	-	-	1	1633743-1	SERVO FEED LATCH ASM	133
-	-	1	1	1-22281-8	SPRING, COMPRESSION	121
-	-	1	1	1-18028-2	WASHER, FLAT, REG M4	119
-	-	REF	-	2119944-1	FEED FINGER ASSEMBLY, SF	117
-	-	1	1	1-690438-0	FRONT STRIP GUIDE	96
-	-	2	2	2168083-1	SCR, SKT HD CAP, RoHS, M3 X 8.0	95
-	-	1	1	2168083-6	SCR, SKT HD CAP, RoHS, M5 X 65	93
-	-	1	1	455888-3	SPACER, CRIMPER	82
-	-	2	2	2079383-4	SCR, BHSC, RoHS (M4 X 8)	79
-	-	1	1	1633470-2	EXTENSION PLATE	78
-	-	1	1	2119956-1	DOCUMENTATION PACKAGE	71
-	-	-	1	2119740-1	TAG, IDENTIFICATION	67
-	-	2	2	2168078-1	SCREW, DRIVE, RH, RoHS, 2 x .188	66
-	-	1	1	2119793-1	LIMITER, ADJUSTMENT BOLT	63
Δ	-	3	3	992763-5	SCR, SET, SOC, CONE POINT, M3 x 4.0	62
-	-	2	2	2-18032-5	SCR, SET, FLT POINT M5 X 20.0	61
-	-	-	1	5-18022-5	SCR, HEX HD CAP, M4 X 6.0	59
-	-	-	1	1338685-1	PAWL, FEED	56
Δ	-	2	2	2168083-3	SCR, SKT HD CAP, RoHS, M4 X 12.0	53
-	-	1	1	5018030-1	NUT, HEX, REG, RoHS, M3	52
-	-	1	1	811242-6	BUMPER, HOLD DOWN	51
-	-	1	1	690753-2	SPACER, TONKER	50
-	-	-	1	18023-9	SCR, SKT HD CAP M4 X 6.0	49
-	-	1	1	2079383-7	SCR, BHSC, RoHS (M8 X 25)	41
-	-	1	1	2119645-1	DISC, NUMBERED FA WIRE ADJUSTMENT	40
-	-	1	1	2119957-1	APPLICATOR SHIM PACK	39
-	-	1	1	2119644-1	RAM WASHER, PRECISION	38
-	-	1	1	1752356-4	SUPPORT, TERMINAL	34
-	-	2	2	2079383-5	SCR, BHSC, RoHS (M4 X 20)	33
-	-	1	1	2161328-1	HEX HEAD, FLANGED, M5 x 8mm LONG	32
-	-	1	1	1320908-8	SPACER, STRIP GUIDE	30
-	-	1	1	1901086-1	PLATE, STRIP GUIDE	29
-	-	1	1	1-455888-0	SPACER, CRIMPER	28
-	-	2	2	22281-8	SPRING, COMPRESSION	27
-	-	1	1	356835-1	LEVER, DRAG RELEASE	26
-	-	1	1	240792-1	DRAG, TERMINAL	25
-	-	1	1	1320928-4	STRIP GUIDE	24
-	-	1	1	980371-4	SCR, SKT HD SHLDR 5.0 DIA X 6.0	23
-	-	1	1	2168083-2	SCR, SKT HD CAP, RoHS, M4 X 8.0	21
-	-	1	1	1-18028-2	WASHER, FLAT, REG M4	20
-	-	1	1	2119533-1	STRIPPER, SIDE FEED	19
Δ	-	1	1	2119806-1	INSERT, SHEAR	13
-	-	1	1	3-22280-3	SPRING, COMPRESSION	12
-	-	1	1	1-356885-3	STOP, SHEAR	11
-	-	1	1	2119805-1	SHEAR HOLDER, FRONT	10
-	-	1	1	318707-4	FLOATING SHEAR, FRONT	9
Δ	-	1	1	1-1633933-4	ANVIL, COMBINATION	8
-	-	-	-	-	-	7
-	-	-	-	-	-	6
-	-	1	1	1-2119757-0	DEPRESSOR, SHEAR	5
-	-	-	-	-	-	4
-	-	-	-	-	-	3
-	-	-	-	-	-	2
Δ	-	1	1	1-456414-1	CRIMPER, WIRE	1
-77	-27	-25	-22	PART NO	DESCRIPTION	ITEM NO

DIMENSIONS:		TOLERANCES UNLESS OTHERWISE SPECIFIED:		DATE: 28NOV2012	CHK: H. HUANG	APPV: S. XI	NAME: Ocean Side Feed Applicator
mm	0 PLC ±	1 PLC ±	2 PLC ±	3 PLC ±	4 PLC ±	ANGLES ±	FINISH
MATERIAL:		FINISH:		WEIGHT:	SCALE: 1:2	SHEET 3 OF 4	REV C

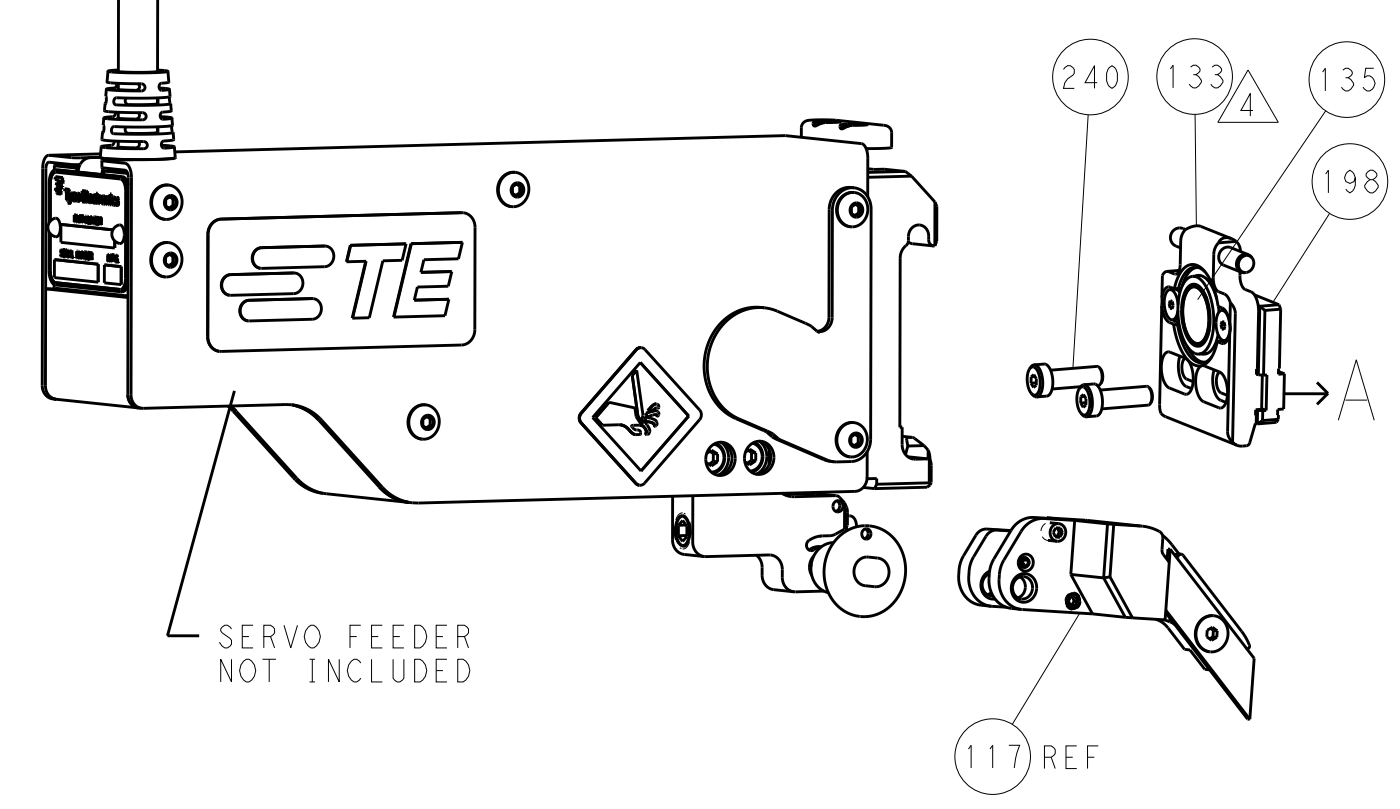
LOC		DIST		REVISIONS			
A	66	P	LTM	DESCRIPTION	DATE	DWN	APVD
		-		SEE SHEET 1			

FEED TYPE

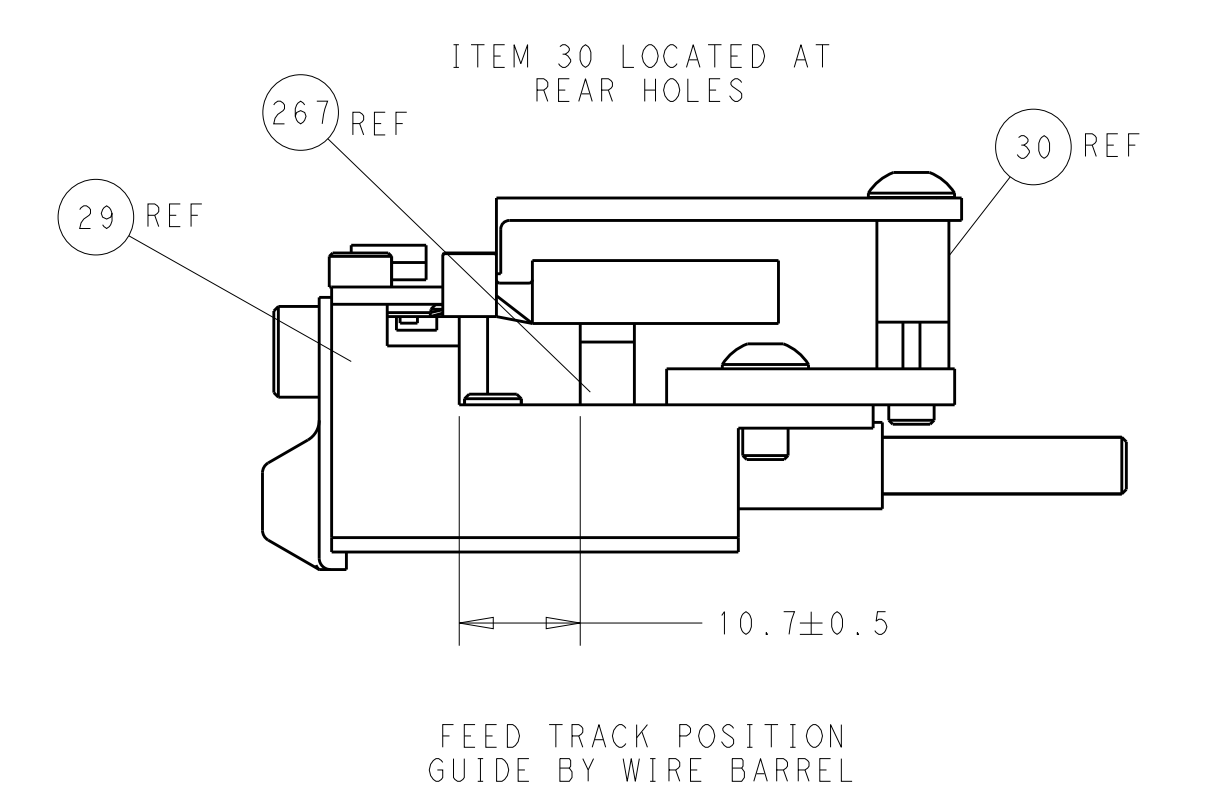
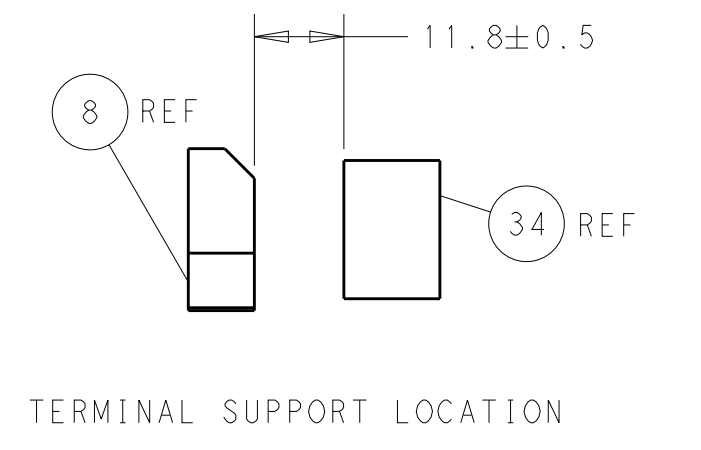
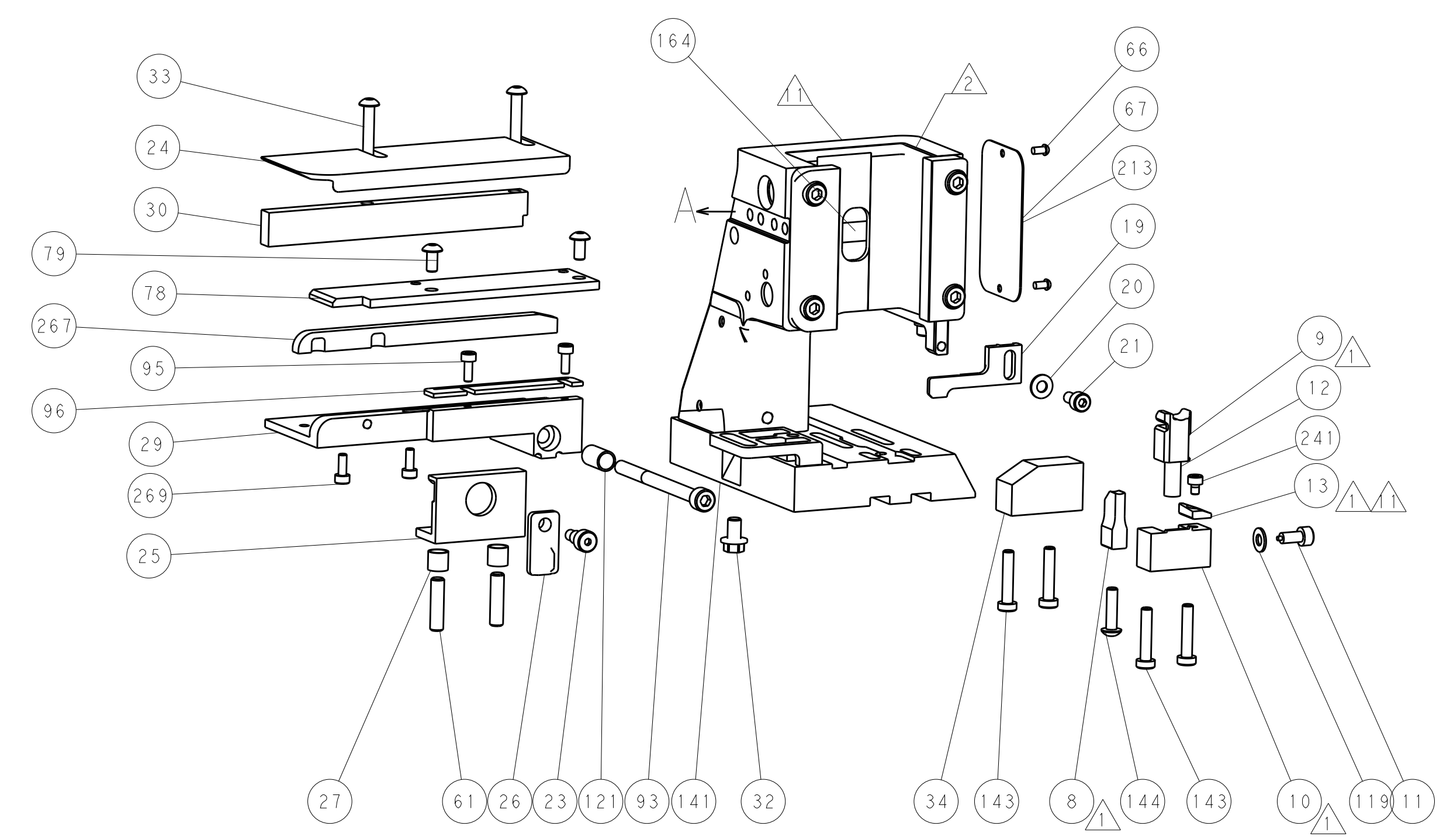
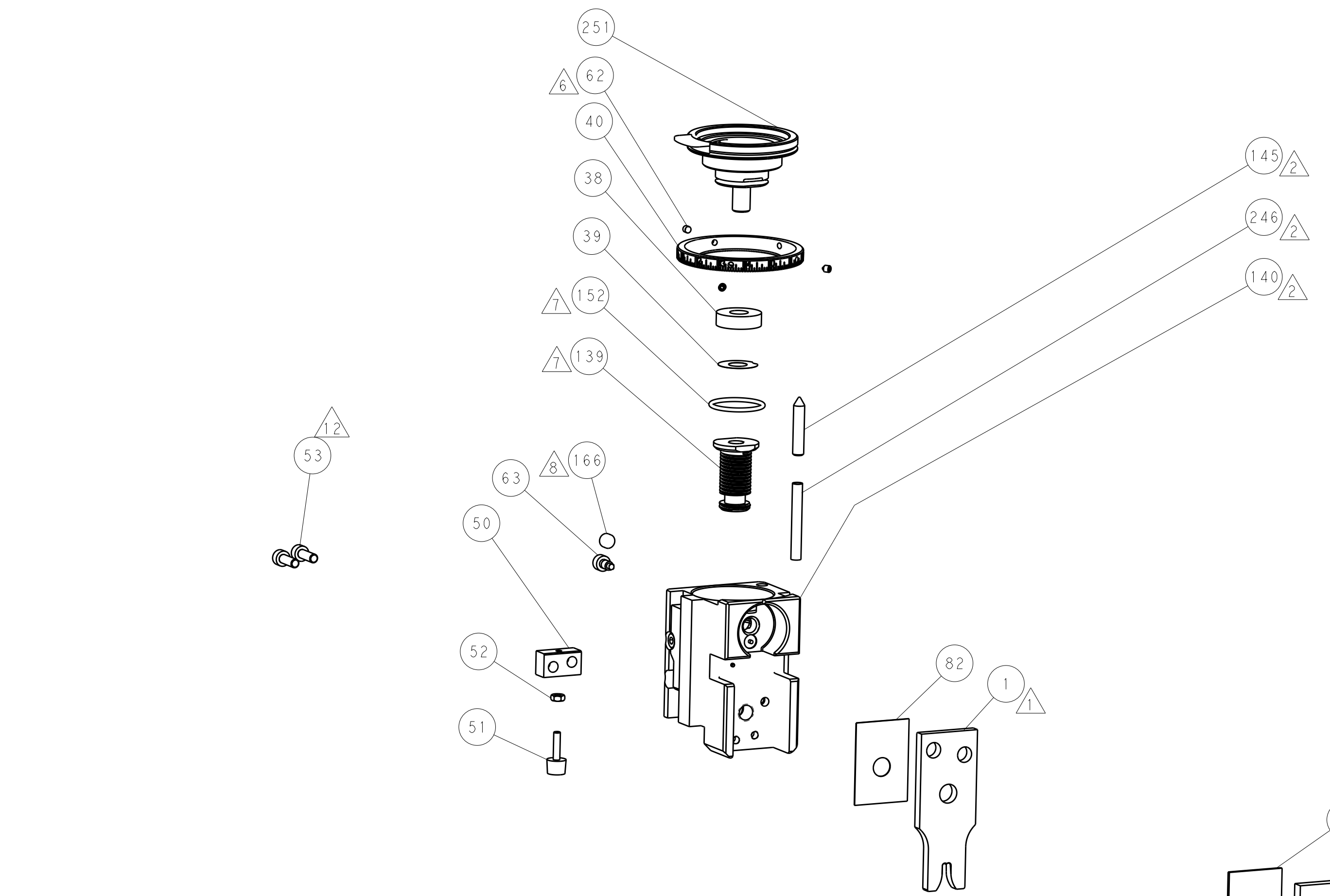
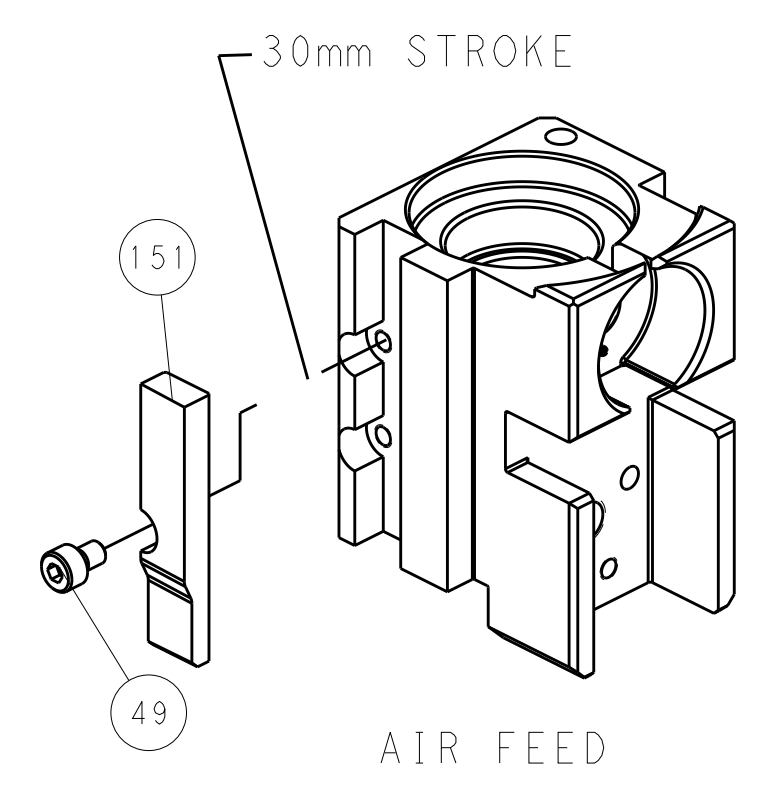
PNEUMATIC



SERVO LATCH PLATE



CAM POSITION



PACIFIC VERSION
 Shown on sheets 3 of 4 & 4 of 4
 (Atlantic version shown on sheets 1 of 4 & 2 of 4)

DIMENSIONS: mm 		TOLERANCES UNLESS OTHERWISE SPECIFIED: 0 PLC ± 1 PLC ± 2 PLC ± 3 PLC ± 4 PLC ± ANGLES ± FINISH		DWN: H. HUANG 28NOV2012 CHK: S. XI 28NOV2012 APVD: S. XI 28NOV2012 NAME: Ocean Side Feed Applicator SIZE: A1 CAGE CODE: 00779 DRAWING NO: 2151809 SCALE: 1:2 SHEET: 4 OF 4 REV: C		STE TE Connectivity Harrisburg, PA 17105-3608	
MATERIAL:		WEIGHT:		RESTRICTED TO:		CUSTOMER ACCESSIBLE PRODUCTION DRAWING	