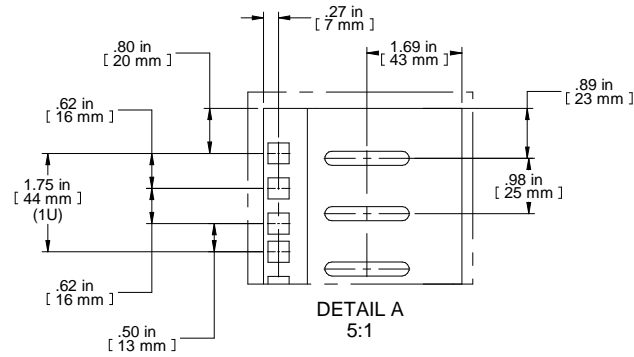
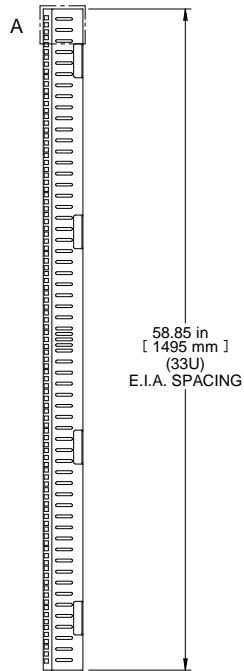


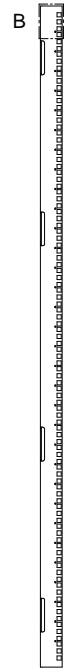
TOP VIEW



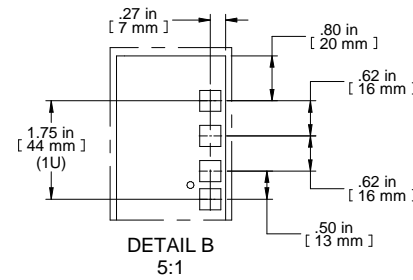
DETAIL A  
5:1



FRONT VIEW



R.S. VIEW



DETAIL B  
5:1



ISOMETRIC

PART NUMBERS	
HCR16SZPL	ZINC PLATED
NOTES	
Sold in Pairs	
Can Mount Directly to Frame in Full Front and Back Positions or	
Can Have Full Front Back Adjustment When used with Depth	
See Hammond Website for More Information	
Français	
Pour tous les détails sur nos produits,	
svp veuillez consulter notre site <a href="http://www.hammondmfg.com">www.hammondmfg.com</a>	
Data subject to change without notice. Isometric drawing not to scale.	
Les données sont sujettes à changement sans préavis.	



PART NO. HCR16SZPL