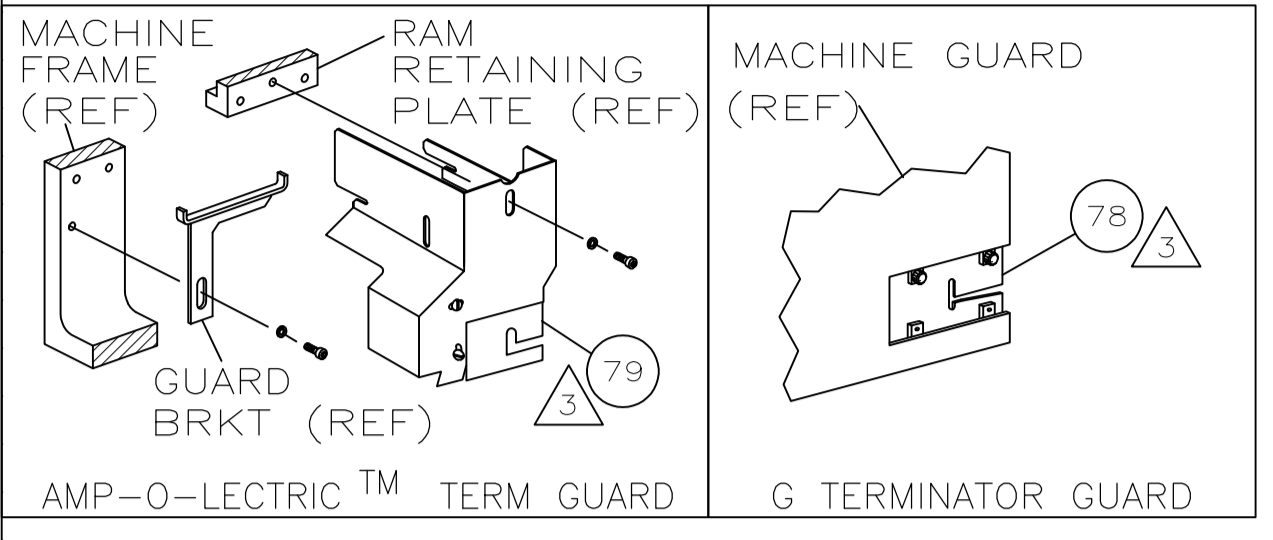


PART NUMBER	REV	FIRST USED
466789-3	J	-



TERMINAL NAME: -

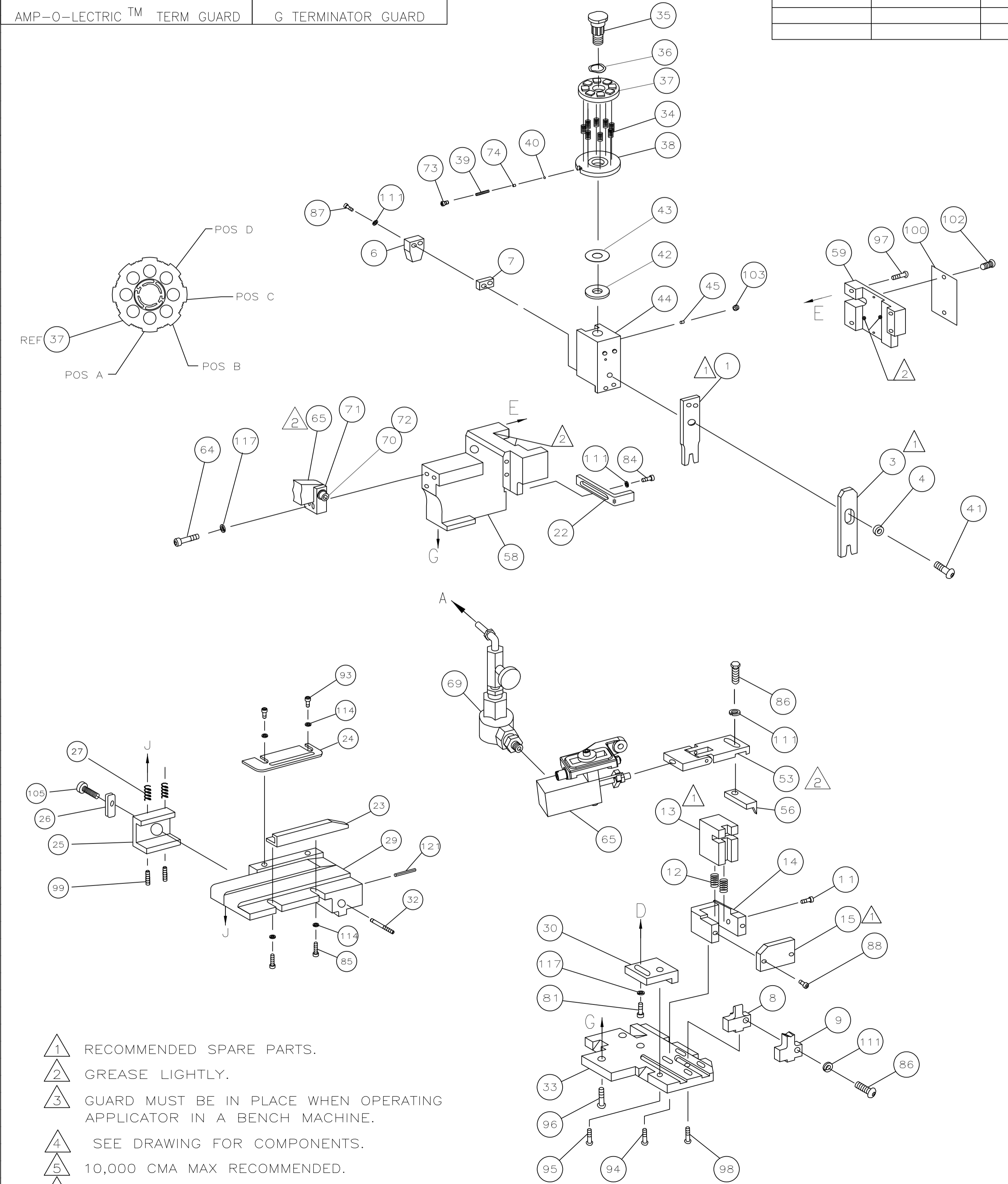
P.G. FASTON		P.G. FASTON		PIDG	
RING	SPADE	640932	640773	RING	SPADE
640814	640864	640942	640773	640773	640782
640815	640825	640944	640774	640774	640783
640816	640826	640948	640775	640775	640784
640817	640827	640956	640776	640776	640785
640818	640827	640958	640777	640777	640786
640819	640828	640960	640778	640778	640787
640820	640829		640779	640779	640788
640821	640830		640780	640780	640789
640822	640831		640781	640781	640790
640823	640832				640791
	640833				640792
	640834				640793
	640835				

TYCO TERMINAL		TYCO CRIMP SPECS	
PAD LTR	CRIMP HEIGHT	WIRE SIZE	
A	.093±.002	16-14	
B	NOT	USED	
C	NOT	USED	
D	NOT	USED	
CRIMP	SIZE	TYPE	RANGE
WIRE	.222	-	16-14
INSUL	.272	-	.160 MAX
FEED	.450-.800	APPL INSTRUCTION	SET UP GAGE
WIRE STRIP LENGTH	-	AI-8063	458637-1
		TERM APPL SPEC	L1043

LOC	DIST	REVISIONS			
F	LTR	DESCRIPTION	DATE	DWN	APVO
A	66	J1	ECR-10-004830	04MAR2010	YY TE

QTY REQD	PART NO	DESCRIPTION	ITEM NO	
1	-	21024-8	WASHER, LOCK 3/8	70
1	-	692655-7	AIR FEED VALVE ASSY	69
				68
				67
				66
1	-	461065-1	AIR FEED ASSY	65
2	-	3-21000-9	SCR,SHC(10-32x1.00)AIR ASSY	64
				63
				62
				61
				60
1	-	454220-1	CAP, RAM	59
1	-	454485-1	HOUSING	58
				57
1	-	1-694433-5	PAWL, FEED	56
				55
				54
1	-	461062-1	FEED FINGER ASSY	53
				52
				51
				50
				49
				48
				47
				46
1	-	690191-1	PLUG, NYLON	45
1	-	455673-1	RAM	44
1	-	690125-1	WASHER, LAMINATED	43
1	-	690124-1	WASHER, RAM	42
1	-	7-21002-9	BOLT, CRIMPER(5/16x1.00)	41
1	-	23241-6	BALL, STEEL	40
1	-	690170-1	SPRING, COMPRESSION	39
1	-	690142-1	DISC, INSULATION	38
1	-	459663-4	WIRE DISC	37
1	-	22480-5	WASHER, SPRING	36
1	-	690212-1	POST, RAM	35
8	-	2-22280-5	SPRING, COMPRESSION	34
1	-	455675-3	PLATE, BASE	33
1	-	690432-3	SCREW, ADJUSTMENT	32
				31
1	-	455689-1	BLOCK, STRIP GUIDE ADJ	30
1	-	684045-1	PLATE, STRIP GUIDE	29
				28
2	-	1-22284-0	SPRING, DRAG	27
1	-	240793-4	LEVER, DRAG RELEASE	26
1	-	240792-6	DRAG, STOCK	25
1	-	690438-4	GUIDE, STRIP (REAR)	24
1	-	684042-1	GUIDE, STRIP (FRONT)	23
				22
				21
				20
1	-	690472-2	STRIPPER	19
1	-	463460-1	HOLDER, TERMINAL	18
				17
				16
1	-	690464-9	PLATE, SHEAR (REAR)	15
1	-	690462-7	HOLDER, SHEAR (REAR)	14
1	-	469542-1	SHEAR, FLOAT (REAR)	13
1	-	5-22280-0	SPRING, SHEAR	12
1	-	690461-2	STOP, SHEAR	11
				10
1	-	1-454766-0	ANVIL, INSULATION	9
1	-	467660-2	ANVIL, WIRE	8
1	-	1-240641-8	SPACER, DEPRESSOR (REAR)	7
1	-	690468-6	DEPRESSOR, SHEAR (REAR)	6
				5
1	-	238009-1	SPACER, BLOCK CRIMPER	4
1	-	1-454765-2	CRIMPER, INSULATION	3
				2
1	-	467661-2	CRIMPER, WIRE	1
-3	U/M	PART NO	DESCRIPTION	ITEM NO

QTY REQD	PART NO	DESCRIPTION	ITEM NO	
			125	
			124	
			123	
			122	
1	-	4-21028-0	PIN,SLT SPR(Ø.093x.75)ST GDE PL	121
				120
				119
				118
3	-	21024-5	WASHER, LOCK(#10)ADJ BLOCK	117
				116
				115
4	-	21024-2	WASHER,LOCK(#4)FRONT STP GUIDE	114
				113
				112
4	-	21024-4	WASHER,LOCK(#8)STRIPPER	111
				110
				109
				108
				107
				106
1	-	22353-8	SCR,SHLD,SLOT HEAD(8-32)	105
				104
1	-	21009-2	SCR,SKT SET(1/4-20x.25 LW)RAM	103
2	-	21017-2	SCR,DRIVE(#2x.19)ID PLATE	102
				101
1	-	461264-1	PLATE, IDENTIFICATION	100
2	-	5-21006-6	SCR,SET(10-32x.88)DRAG	99
1	-	22733-8	SCR,BHC(8-32x.38 LW)ANVIL	98
4	-	2-21002-9	SCR,BHC(10-32x.75)CAP	97
3	-	2-22733-8	SCR,BHC(1/4-20x.62)HSG	96
1	-	2-21002-7	SCR,BHC(10-32x.50)SG ADJ BLK	95
2	-	2-21002-2	SCR,BHC(8-32x.50)TERM H DWN	94
4	-	1-21000-4	SCR,SHC(4-40x.38)R STP GDE	93
				92
				91
				90
				89
1	-	2-21000-8	SCR,BHC(8-32x.62)R SHEAR PLATE	88
2	-	3-21000-1	SCR,SHC(8-32x1.00)DEP-HOLD	87
1	-	2-21000-6	SCR,HEX HD(8-32x.38)FEED FINGER	86
				85
1	-	2-21000-7	SCR,SHC(8-32x.50)STRIPPER	84
				83
				82
1	-	3-21000-4	SCR,SHC(10-32x.38)SG ADJ BL	81
				80
				79
REF	-	462992-2	GUARD ASSY	78
				77
				76
				75
1	-	690603-1	SPRING, ASSIST	74
1	-	23030-1	SCR,SHC(6-32x.25 SL)INS DISC	73
1	-	3-21001-5	SCR,SHC(3/8-16x1.00)AIR FEED	72
1	-	459610-1	MOUNT, FEED BRACKET	71
-3	U/M	PART NO	DESCRIPTION	ITEM NO



- 1 RECOMMENDED SPARE PARTS.
- 2 GREASE LIGHTLY.
- 3 GUARD MUST BE IN PLACE WHEN OPERATING APPLICATOR IN A BENCH MACHINE.
- 4 SEE DRAWING FOR COMPONENTS.
- 5 10,000 CMA MAX RECOMMENDED.
- 6 USE Ø.19 50/50 SOLDER TO CHECK CRIMP HT.

THIS DRAWING IS A CONTROLLED DOCUMENT.

DIMENSIONS: INCHES	TOLERANCES UNLESS OTHERWISE SPECIFIED:	0 PLC ± .005	1 PLC ± .005	2 PLC ± .005	3 PLC ± .005	4 PLC ± .005	ANGLES ± .005
MATERIAL	FINISH	WEIGHT	SIZE	CAGE CODE	DRAWING NO	RESTRICTED TO	
			A1	00779	466789-3		

APPROVED: M. YOUNGER, G. RAILLY, J. ELBIN

TYCO ELECTRONICS CORPORATION, Harrisburg, PA 17105-3608

MINIATURE QUICK CHANGE APPLICATOR SIDE FEED (COMMON CRIMP PIDG & PG 16-14)

CUSTOMER DRAWING, SCALE, SHEET 1 OF 1, REV J1