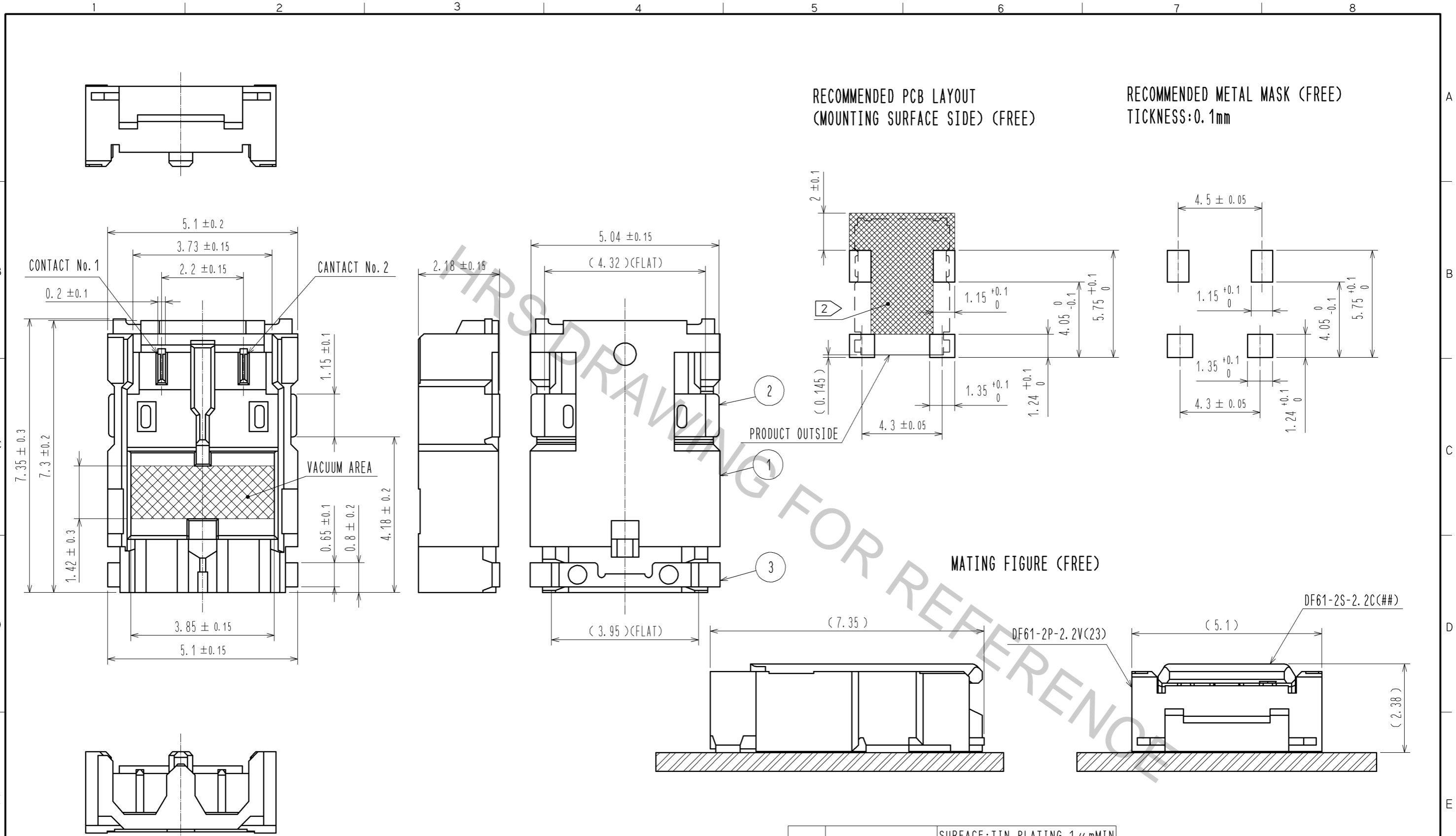
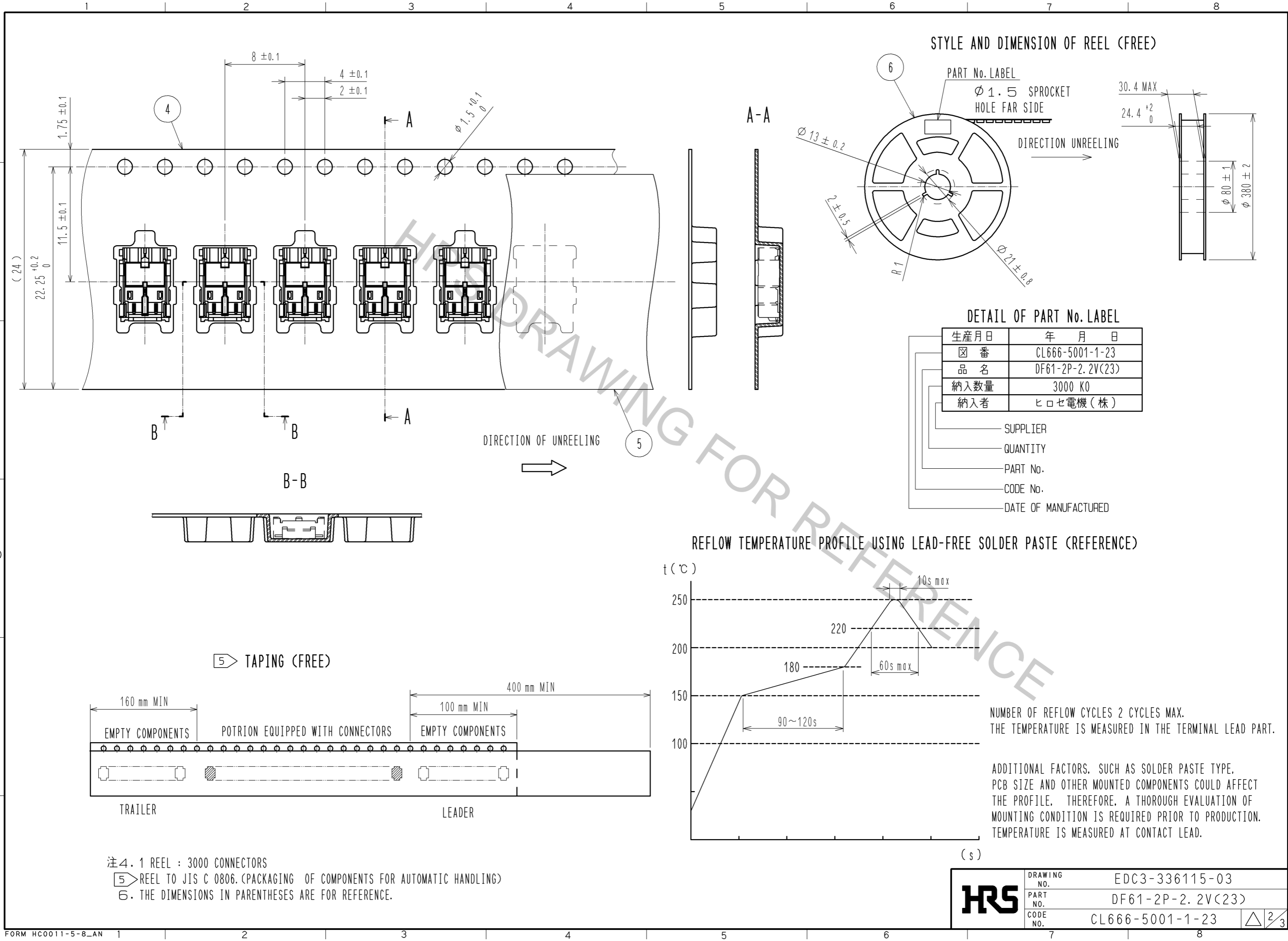


Apr.1.2017 Copyright 2017 HIROSE ELECTRIC CO., LTD. All Rights Reserved.



NOTE1. LEAD CO-PLANARITY SHALL BE 0.1mmMAX
 2. :FOR THE USE UNDER 350 V CONDITION. PLEASE DESIGN THE LAYOUT TO KEEP ENOUGH CREEPAGE DISTANCE. AND ARRANGE NO CONDUCTIVE TRACE OR RESIST COVERAGE IF NECESSARY.
 3. PLEASE CONSULT HIROSE WHEN THE PRODUCT IS MONUTED TO FPC.

| 3 | BRASS | SURFACE:TIN PLATING 1 μmMIN UNDER PLATING:NICKEL PLATING 0.5 μmMIN | | |
|------------------------|-----------|---|----------------------------|-------|
| 2 | BRASS | SURFACE:TIN PLATING 1 μmMIN UNDER PLATING:NICKEL PLATING 0.5 μmMIN | | |
| 1 | LCP | UL94V-0, BEIGE | | |
| 6 | PS | REEL, BLACK | | |
| 5 | POLYESTER | CLEER(COVER TAPE) | | |
| 4 | PS | CLEER(CENBOSSED CARRIER TAPE) | | |
| NO. | MATERIAL | FINISH | REMARKS | |
| UNITS mm | | | SCALE 10:1 | COUNT |
| | | DESCRIPTION OF REVISIONS | | |
| | | DESIGNED | CHECKED | DATE |
| APPROVED : KI. AKIYAMA | | 12.04.25 | DRAWING NO. EDC3-336115-03 | |
| CHECED : HK. UMEHARA | | 12.04.24 | PART NO. DF61-2P-2.2V(23) | |
| DESIGNED : TT. OHSAKO | | 12.04.24 | CODE NO. CL666-5001-1-23 | |
| DRAWN : TT. OHSAKO | | 12.04.24 | | |



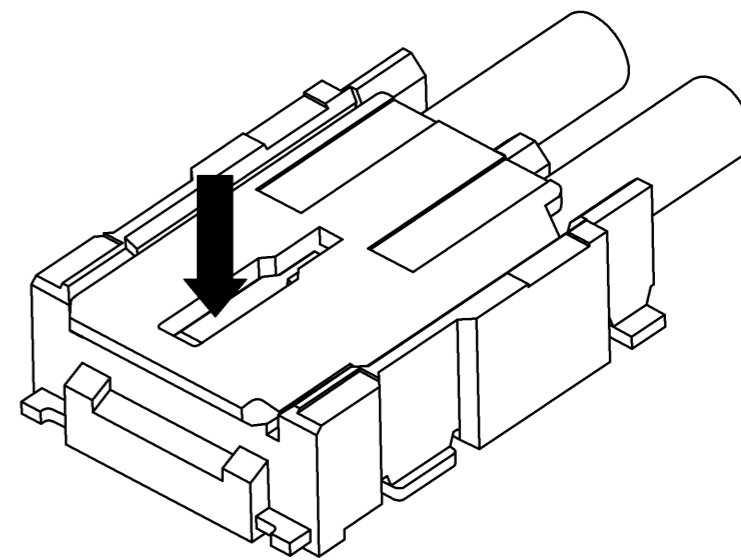
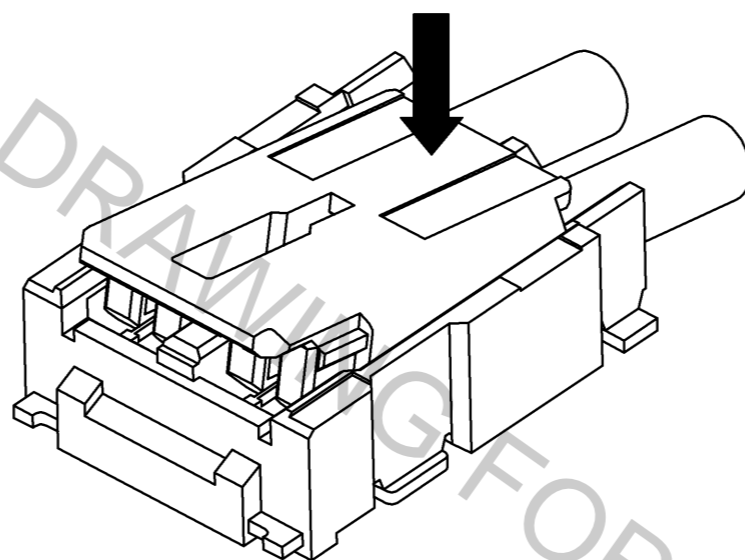
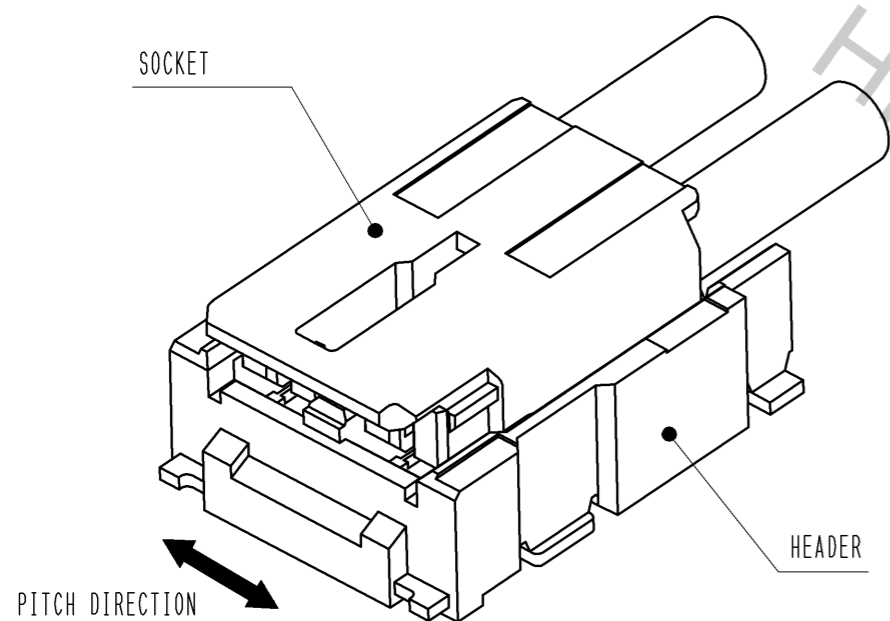
DF61 Series Mating / Unmating Operation Instruction

Mating

① By positioning the convexity of the socket sides to the header concavity, align the centers of the socket and the header in pitch direction.

② Slightly press the socket down at cable side to tilted angle.

③ Press down at the lever side with stabilizing the cable side to insert. Mating completes.

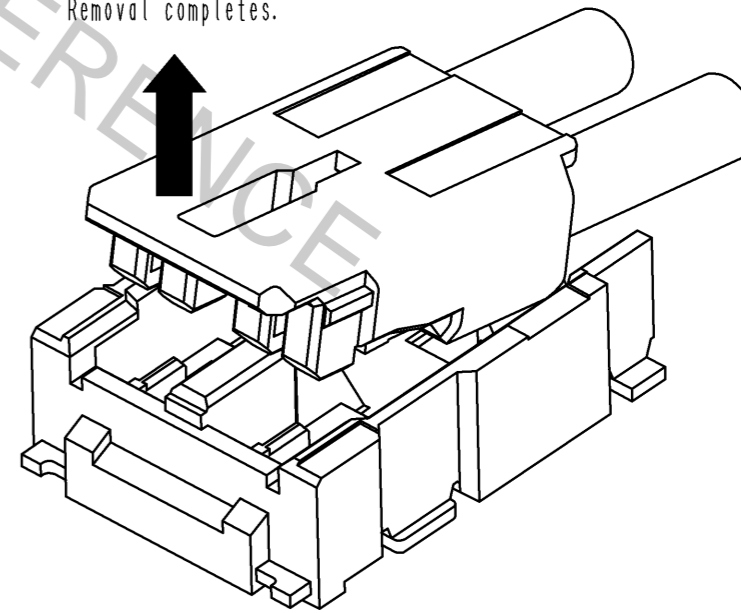
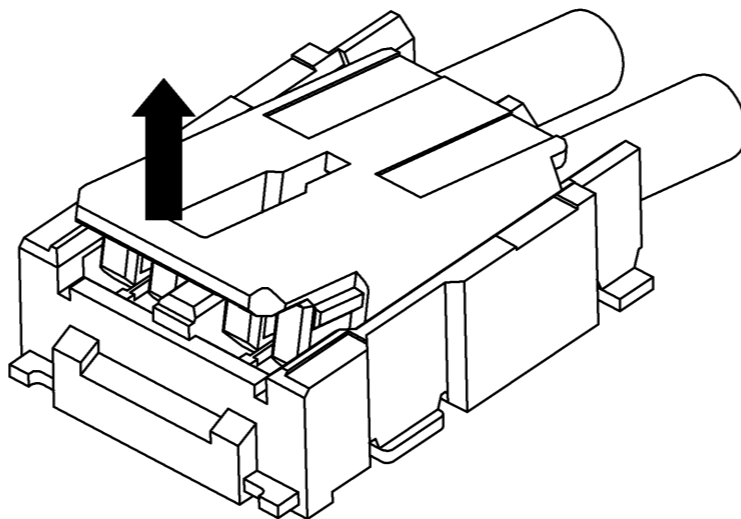
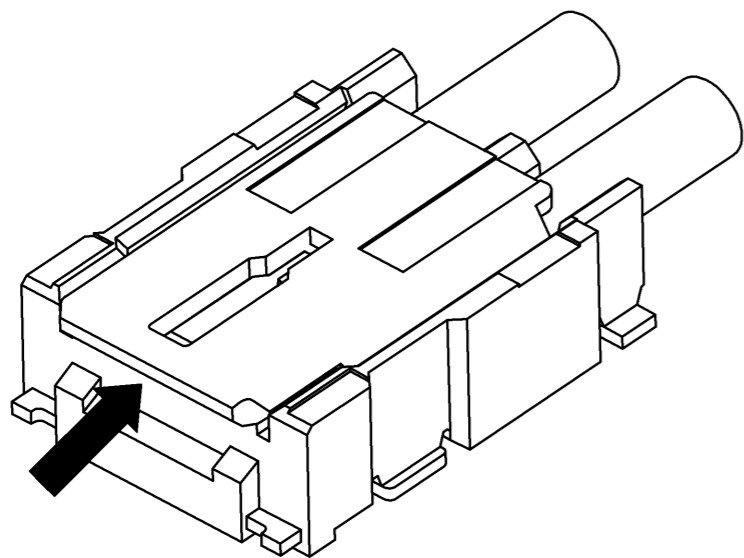


Unmating

① Hook the lever with finger nail.

② Lift up to the upper direction and friction lock is released.

③ Lift up to the upper direction and positive lock is released. Removal completes.



図番: EDC3-336115-03
製品名: DF61-2P-2.2V(23)
製品コード: CL666-5001-1-23

△ 3/3