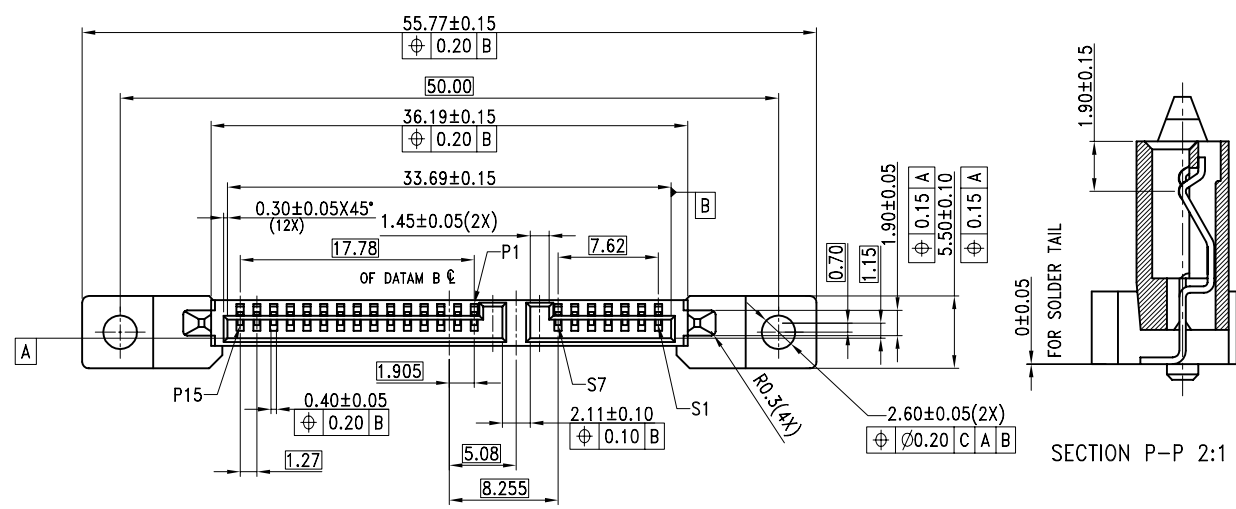


This document is the property of Amphenol Corporation and is delivered on the express condition that it is not to be disclosed, reproduced or used, in whole or in part, for manufacture or sale by anyone other than Amphenol Corporation without the prior consent, & that no right is granted to disclose or to use any information in this document.

REVISIONS

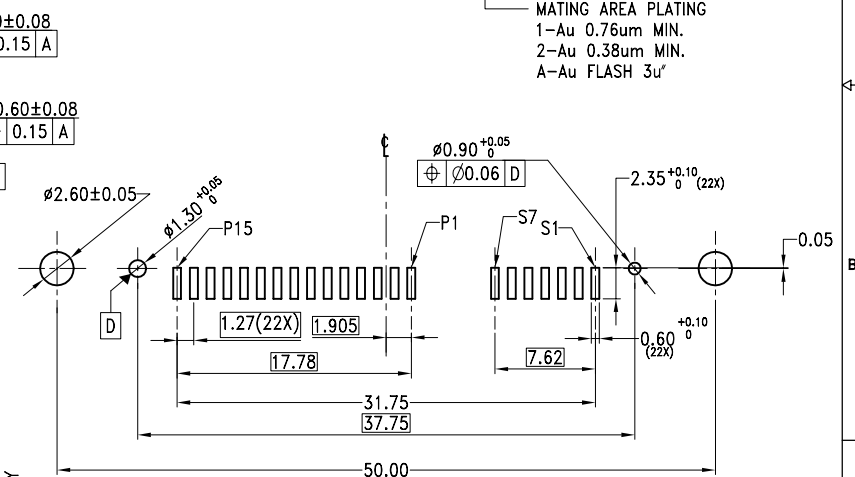
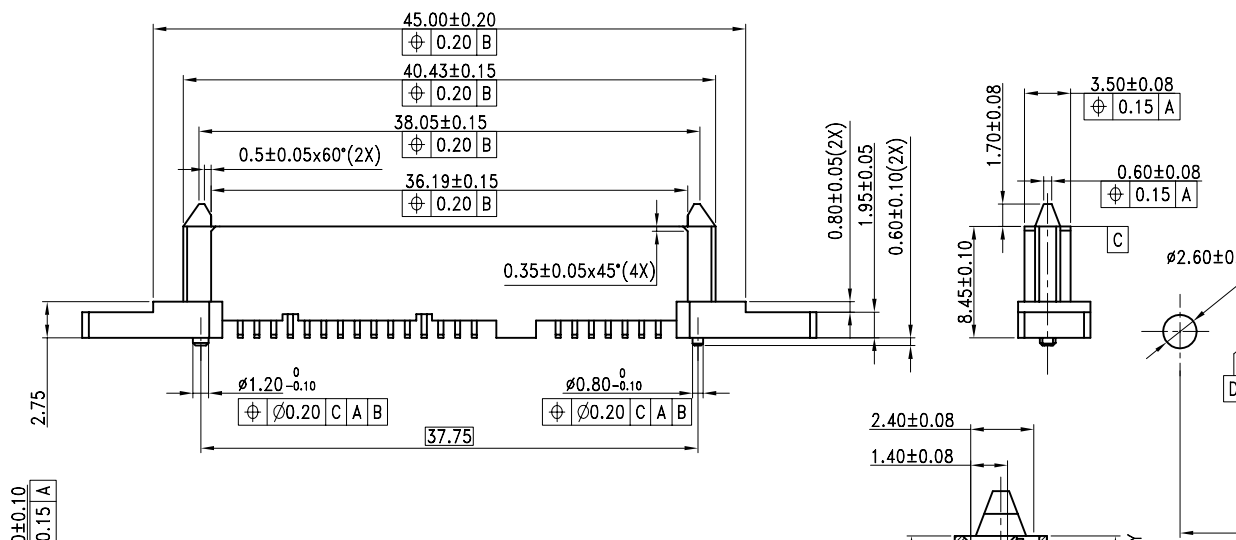
SYM	ECN	DESCRIPTION	DATE	APPROVED
A3	HKXXXX	INITIALLY RELEASE	9/30/04	IP
A3	HKXXXX	shift the riveted hole	12/14/04	IP
A4	HKXXXX	ADD THE STEP THICKNESS	7/24/05	IP
A5	HKXXXX	ADAPT THE DIMENSIONS FROM 8.4MM TO 8.27. ADAPT THE DIMENSION FROM 2.38 TO 2.26MM.	10/14/05	IP



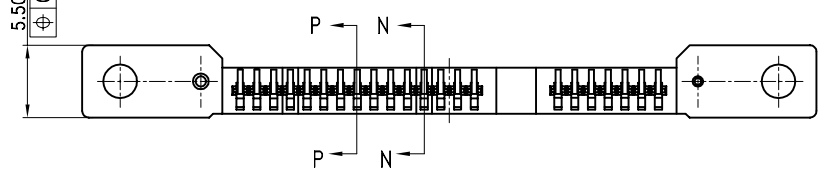
NOTES:

- Material HOUSING :THERMOPLASTIC, UL94V-0  
COLOR:BLACK  
CONTACT: PHOSPHOR BRONZE  
PLATING: UNDER PLATING WITH NICKEL 1.27u MIN.  
OVER PLATING WITH GOLD ON MATING AREA  
GOLD PLATING THICKNESS REFER TO P/N SYSTEM  
PURE TIN 2.54u MIN. PLATING ON TERMINAL
- ELECTRICAL SPECIFICATION: MAXIMUM RATED CURRENT:1.5Amps@30°C MAX.  
CONTACT RESISTANCE:30 MILLIOHMS MAX.  
INSULATOR RESISTANCE:1000MEGOHMA MIN.  
DIELECTRIC WITHSTANDING VOLTAGE: 500 V AC
- MATERIAL SHOULD BE FULFILLED AMPHENOL SPEC# SSN001.
- PREMATING AT P4 & P12
- ORDER P/N SYSTEM: SATA-101-0115-X

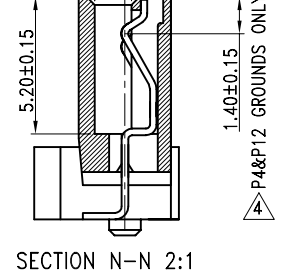
MATING AREA PLATING  
1-Au 0.76um MIN.  
2-Au 0.38um MIN.  
A-Au FLASH 3u"



RECOMMENDED PCB LAYOUT



CUSTOMER DRAWING



SECTION N-N 2:1



ITEM NO	PART OR IDENTIFICATION NO	NOMENCLATURE OR DESCRIPTION	QTY REQ'D
PARTS LIST			
UNLESS OTHERWISE SPECIFIED TOLERANCES		APPROVAL	DATE
U.S.	METRIC	DRAWN TOM.TANG	7/24/05
±.00	±0.20	CHECKED RAN.XUACI	7/24/05
±.005	±0.10	CHECKED	
FRACTIONS ±/-	°	DRAWING FILE :	
ANGLES ±/-	°	TITLE	
FOR MATERIALS AND FINISHES SEE NOTES		SATA 7+15P SMT RECEPTACLE	
REMOVE SHARP EDGES	ANGLE OF PROJECTION	SIZE	DRAWING NO.
DIMENSIONS		A3	C-SATA-101-0115-X
1/16		SCALE	NONE
(METRIC)	(MM)	SHEET	1 OF 1
			REV. A5