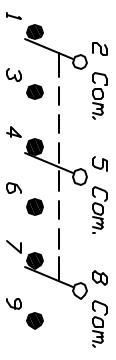


RECOMMENDED P.C.B. LAYOUT

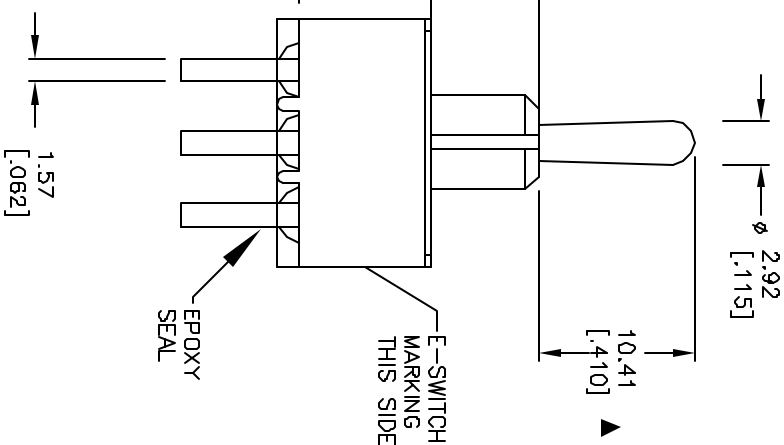
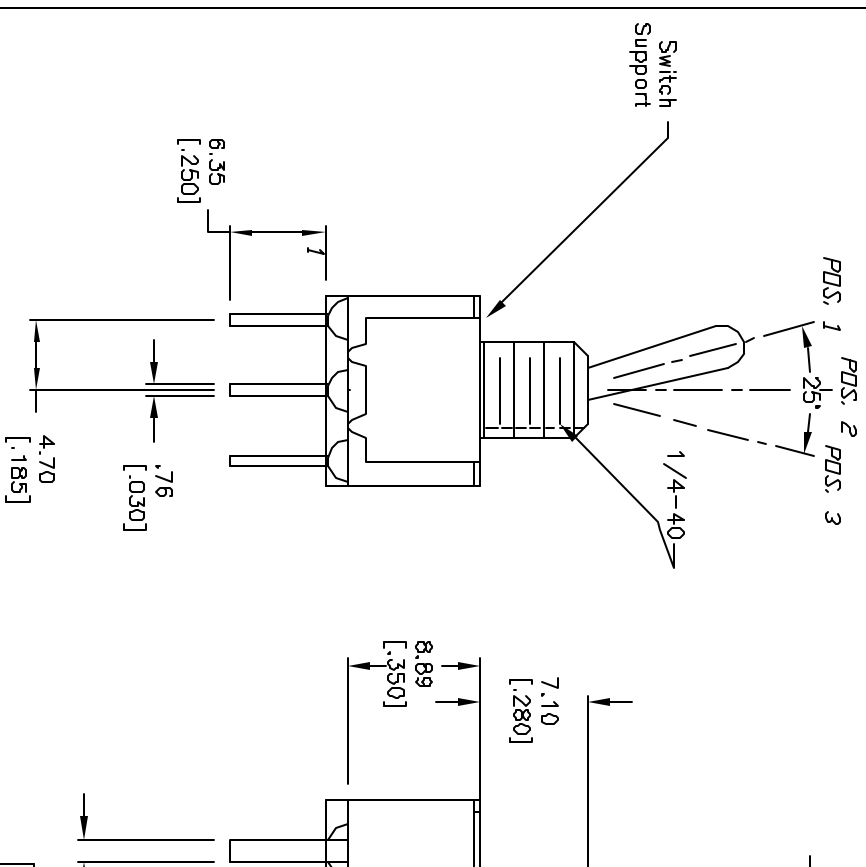
▲ SWITCH FUNCTION		
POS. 1	POS. 2	POS. 3
(CND)	(CND)	(CND)
2-3,5-6 B-9	NONE	2-1,5-4 B-7

(CND)=MOMENTARY



CIRCUIT: 3PDT

- NOTES:
1. ALL DIMENSIONS IN MM [INCH]
  2. GENERAL TOLERANCE: X.X=±0.4 X.XX=±0.25
  3. TERMINAL NUMBERS FOR REF ONLY
  4. RATING: 2A @250VAC; 5A @120VAC
  5. CONTACT MATERIAL:  
Copper Alloy W/SILVER Plate over Nickel plate.
  6. ELECTRIC LIFE: 40,000 make-and-break cycles at full load.
  7. INSULATION RESISTANCE: 1,000 Mega-ohm min.
  8. DIELECTRIC STRENGTH: 1,000 V RMS @sea level.
  9. OPERATING TEMP.: -30C to 85C
  10. ▲ DENOTES CRITICAL PARAMETER.



# E-SWITCH®

100 3P-4 T1 B4 M3 Q E

REV.	ECN NO.	NEW RELEASE	DATE	CHKD
A	12805	NEW RELEASE	2/11/03	RC
DESCRIPTION				
THE INFORMATION CONTAINED IN THIS DOCUMENT IS PROPRIETARY TO E-SWITCH AND IS NOT TO BE COPIED OR TRANSMITTED				

TITLE	SCALE	DATE	DR	DWG	REV
100 3P-4 T1 B4 M3 Q E	2:1	2/11/03	RC	T134005	A