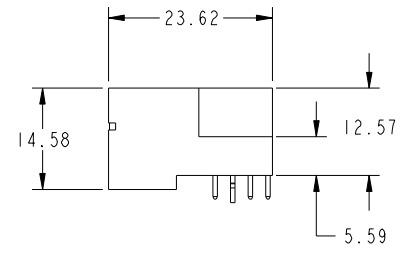
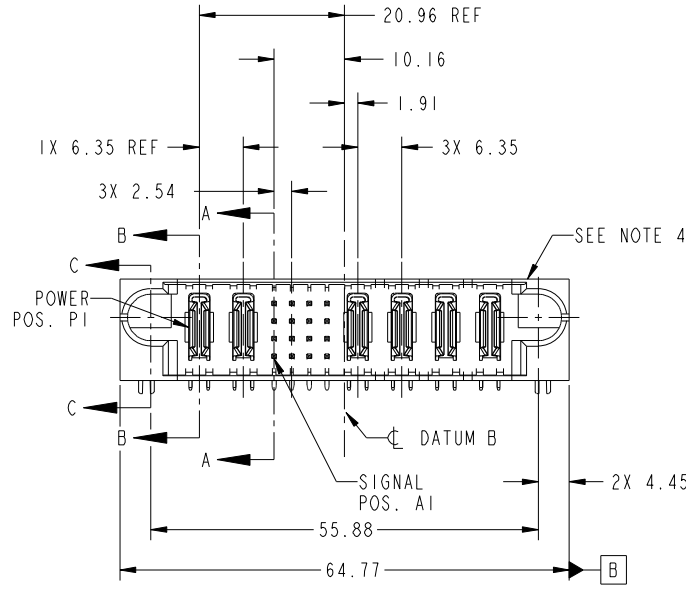


Tous droits strictement reserves. Reproduction ou communication a des tiers interdite sous quelque forme que ce soit sans autorisation écrite du propriétaire. Propriete de c FCI. Droits de reproduction FCI.

All rights strictly reserved. Reproduction or issue to third parties in any form whatever is not permitted without written authority from the proprietor. Property of FCI. Copyright FCI.



PRODUCT NO. 51730-147-- NOTE 3	ROWS DCBA	POWER		SIGNAL				POWER				E2
		E1	P1	P2	1	2	3	4	P3	P4	P5	



CODE	DIM "M" MATING LENGTH	CONTACT TYPE
U	[6.86]	SIGNAL
PA	[N/A]	POWER
HA	[N/A]	HOLD-DOWN
R	[6.86]	SIGNAL
F	[5.59]	SIGNAL
TL	[7.82]	SIGNAL

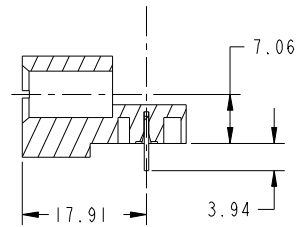
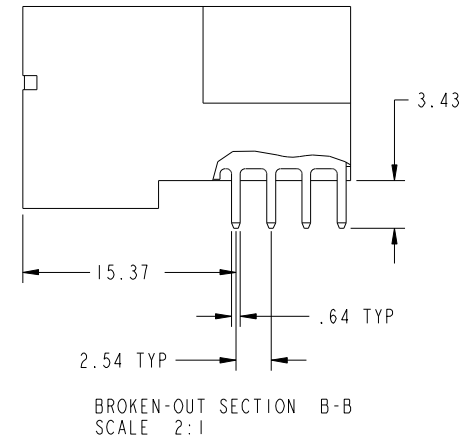
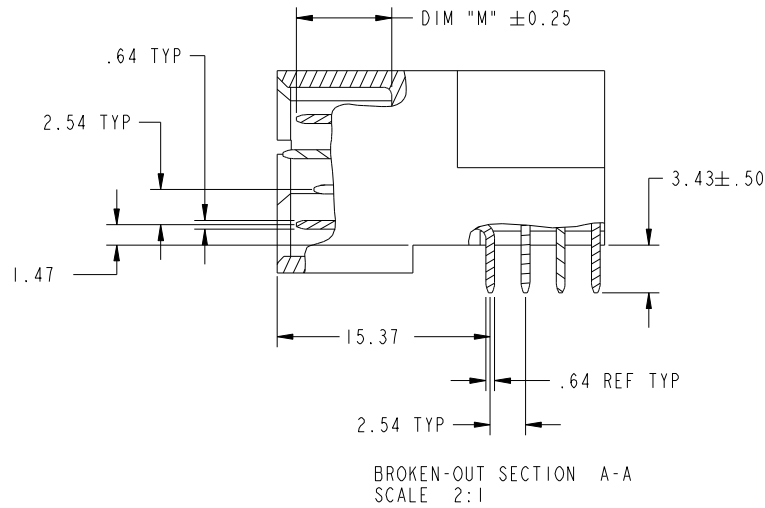
mat'l code				SEE NOTE		tolerances unless otherwise specified		CUSTOMER		FCI www.fciconnect.com	
ltr	ecn no.	dr	date	linear		0.X ±0.3	COPY		title		
A	DG08-0216	JW	05/27/08			0.XX ±0.13	projection		2P + 16S + 4P RIGHT ANGLE SOLDER HEADER		
				angles		0.XXX ±0.051	MIM		product family		code
				dr	JULIA WANG	05/27/08	← MIM →		PwrBlade		213
				enr	JEROME CHEN	05/27/08	scale		size		sheet
				chr	GARY HSIEH	05/27/08	1:1		dwg no		1 of 4
				appd	JOSEPH HSIA	05/27/08			A		51730-147
sheet index	revision sheet	A	A	A	A						
		1	2	3	4						
								cage code		22526	

Tous droits strictement reserves. Reproduction ou communication a des tiers interdite sous quelque forme que ce soit sans autorisation écrite du propriétaire. Propriete de c FCI. Droits de reproduction FCI.

All rights strictly reserved. Reproduction or issue to third parties in any form whatever is not permitted without written authority from the proprietor. Property of FCI. Copyright FCI.



PRODUCT NUMBER  
51730-147\_\_  
NOTE: 3



mat'l code		SEE NOTE		tolerances unless otherwise specified		CUSTOMER		FCI	
ltr	ecr no.	dr	date	linear	0.X ±0.3	COPY		www.fciconnect.com	
A					0.XX ±0.13	projection		title	
				angles	0.XXX ±0.051			2P + 16S + 4P RIGHT ANGLE SOLDER HEADER	
				dr	0° ±2°			product family PwrBlade code	
				enr	JULIA WANG 05/27/08	size		213	
				chr	JEROME CHEN 05/27/08	scale		sheet	
				appd	GARY HSIEH 05/27/08	1:1		2 of 4	
					JOSEPH HSIA 05/27/08	A		51730-147	
sheet index	revision sheet								

cage code 22526

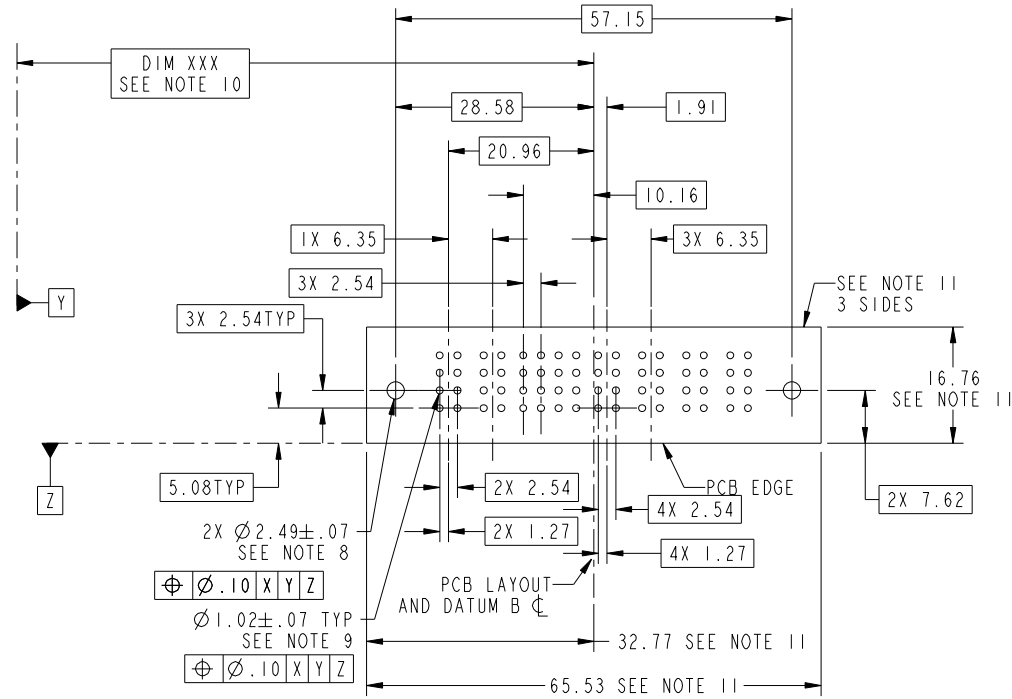
Pro/E

Tous droits strictement reserves. Reproduction ou communication a des tiers interdite sous quelque forme que ce soit sans autorisation écrite du propriétaire. Propriete de c FCI. Droits de reproduction FCI.



All rights strictly reserved. Reproduction or issue to third parties in any form whatever is not permitted without written authority from the proprietor. Property of FCI. Copyright FCI.

PRODUCT NUMBER  
51730-147\_\_  
NOTE: 3



RECOMMENDED PCB LAYOUT

mat'l code		SEE NOTE		tolerances unless otherwise specified		CUSTOMER		FCI	
ltr	ecn no.	dr	date	linear	0.X ± 0.3	COPY		www.fciconnect.com	
A					0.XX ± 0.13	projection		title	
				angles	0.XXX ± 0.051			2P + 16S + 4P RIGHT ANGLE SOLDER HEADER	
		dr	JULIA WANG	0° ± 2°	0° ± 2°	MIM		product family	PwrBlade
		enr	JEROME CHEN			scale		size	code
		chr	GARY HSIEH			1:1		dwg no	213
		appd	JOSEPH HSIA					51730-147	sheet
sheet index	revision sheet							3 of 4	

cage code 22526

Pro/E

Tous droits strictement reserves. Reproduction ou communication a des tiers interdite sous quelque forme que ce soit sans autorisation écrite du propriétaire. Propriete de c FCI. Droits de reproduction FCI.



All rights strictly reserved. Reproduction or issue to third parties in any form whatever is not permitted without written authority from the proprietor. Property of FCI. Copyright FCI.

PRODUCT NUMBER  
51730-147--  
NOTE: 3

NOTES:

1. DIMENSIONS AND TOLERANCES ARE IN ACCORDANCE WITH ASME Y14.5M, 1994 UNLESS OTHERWISE SPECIFIED.

CONNECTOR NOTES:

- 2. HOUSING MATERIAL: UL 94 V-0 GLASS FILLED HIGH-TEMP THERMOPLASTIC  
POWER CONTACT MATERIAL: COPPER ALLOY  
SIGNAL PIN MATERIAL: COPPER ALLOY
- 3. 51730-147; 51730-147LF PLATING SPEC. SEE PRINT:10064183
- 4. MANUFACTURER'S NAME, P/N, AND DATE CODE TO APPEAR ON THIS SURFACE.
- 5. PRODUCT SPECIFICATION GS-12-149.  
APPLICATION SPECIFICATION BUS-20-067.
- 6. PACKAGED IN TRAYS.

PCB NOTES:

- 7. ALL HOLE DIAMETERS ARE FINISHED HOLE SIZE.
- 8. MOUNTING HOLES, WHERE APPLICABLE, ARE UNPLATED.
- 9.  $\varnothing 1.151 \pm 0.025$  DRILLED HOLES PLATED WITH 0.008 MIN SnPb OR Sn OVER 0.03 TO 0.08 Cu PLATING TO ACHIEVE  $\varnothing 1.02 \pm .07$  HOLE.
- 10. "DIM XXX" TO BE DETERMINED BY THE CUSTOMER.
- 11. CONNECTOR KEEP-OUT ZONE.

mat'l code		SEE NOTE		tolerances unless otherwise specified		CUSTOMER		FCI		www.fciconnect.com	
ltr	ecr no.	dr	date	linear	0.X ± 0.3	COPY		projection		title	
A					0.XX ± 0.13					2P + 16S + 4P RIGHT ANGLE SOLDER HEADER	
				angles	0.XXX ± 0.051					product family PwrBlade code	
				dr	0° ± 2°			size		213	
				enr	JULIA WANG 05/27/08	scale		dwg no		sheet	
				chr	JEROME CHEN 05/27/08	1:1		A 51730-147		4 of 4	
				appd	GARY HSIEH 05/27/08						
					JOSEPH HSIA 05/27/08						
sheet index	revision sheet										

cage code 22526

Pro/E