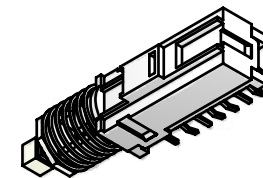


NOTES:

1. ALL DIMENSIONS IN MM [INCH]
2. GENERAL TOLERANCE: x.x=±0.4mm  
x.xx=±0.25mm
3. RATING: DC 30V, 0.3A
4. OPERATING FORCE: 200±100gf
5. TRAVEL: 3.3mm FULL TRAVEL (B)  
2.5mm TO LOCK
6. LIFE CYCLES: 10,000 CYCLES
7. OPERATING TEMPERATURE: -20°C TO 70°C
8. CONTACT RESISTANCE: 20mΩ MAX. (B)
9. INSULATION RESISTANCE: 100MΩ MIN@ 500VDC.
- ▲10. LED COLOR: GREEN
11. ▲ DENOTES CRITICAL PARAMETER.
12. 2002/95/EC (RoHS) COMPLIANT.

LED SPECS	UNITS	GREEN
FORWARD CURRENT	mA	20
FORWARD VOLTAGE @20mA	V	1.7 Typ-2.6 Max
LUMINOUS INTENSITY @ 10mA	MCD	4.7-7.8



B	19529	DRAWING UPDATE / CLEAN UP	12/14/10	BGL
A	18805	New-Release	1/20/10	rc
REV	PCR NO	DESCRIPTION	DATE	BY

TITLE WBL4UEEGQ				
SCALE 2	DATE 1/20/2010	DR rc	DWG B400003	REV B

THE INFORMATION CONTAINED IN THIS DOCUMENT IS PROPRIETARY TO E-SWITCH AND IS NOT TO BE COPIED OR TRANSFERRED