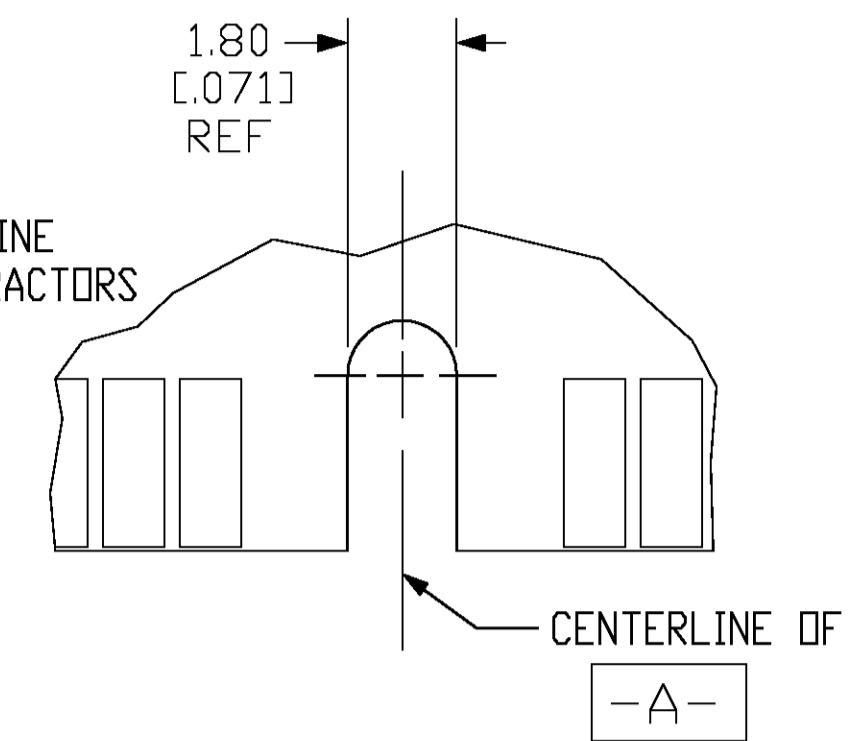
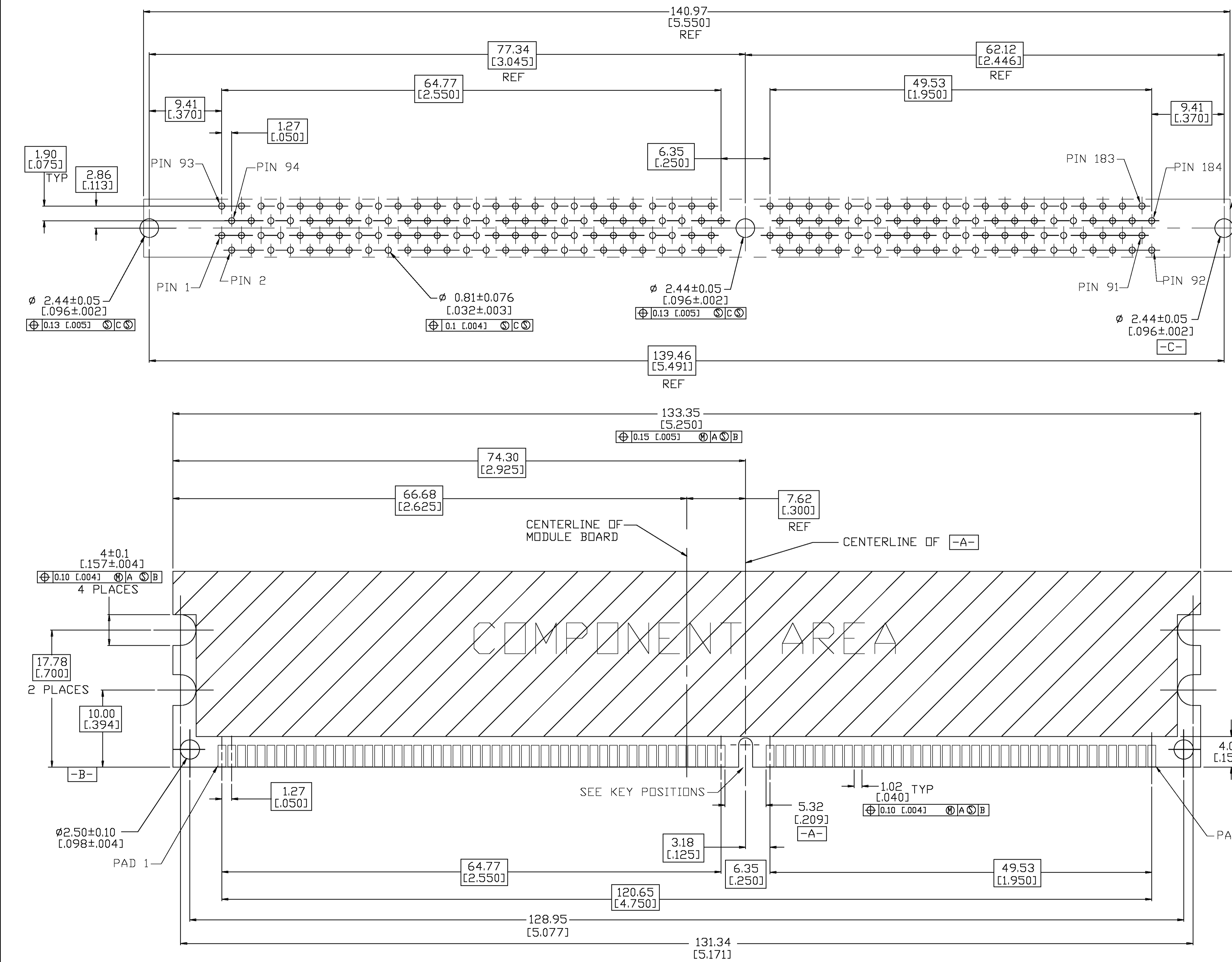


△ MATERIAL  
 HOUSING AND EXTRACTORS: GLASS FILLED HIGH TEMPERATURE NYLON.  
 CONTACT: PHOS. BRONZE, C51100, TEMPER H06.

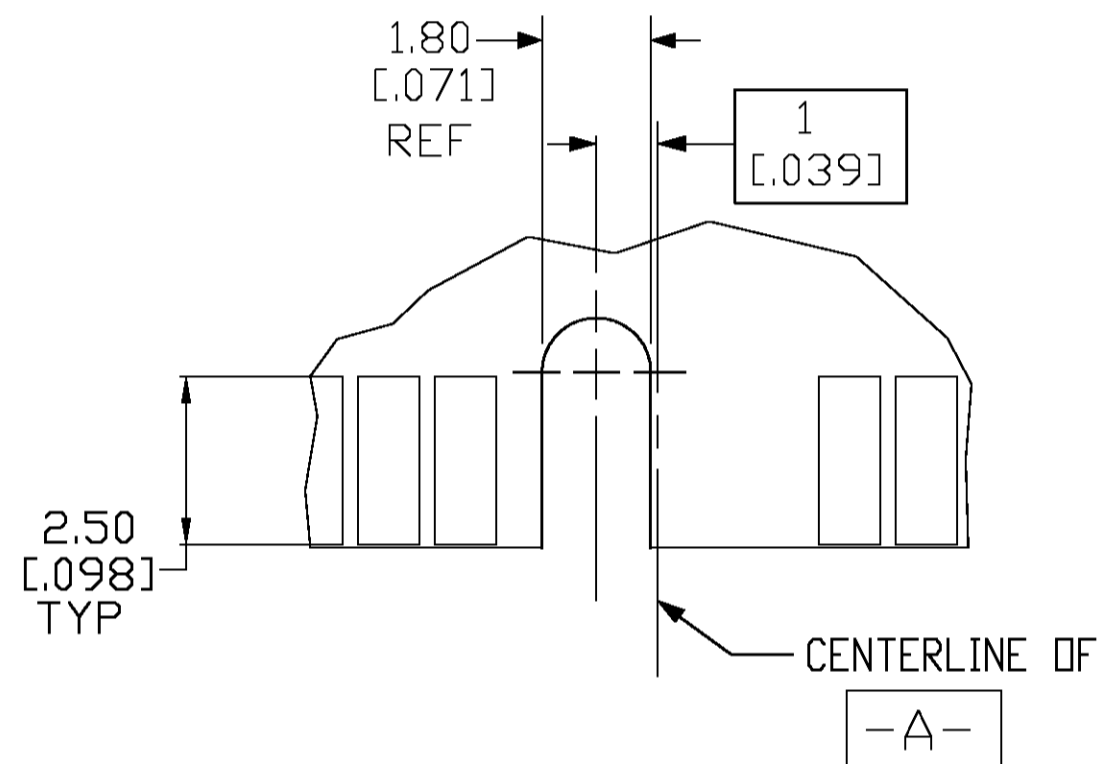
△ FINISH  
 CONTACT:  
 NICKEL PLATE ALL OVER 0.00127-0.0019 [0.000050-.000075] THICK  
 PER AMP SPEC 112-25-2.  
 GOLD PLATE IN INTERFACE AREA 0.00038 [0.000015] MIN THICK  
 PER AMP SPEC 112-162-5.  
 MATTE TIN PLATE IN SOLDER TAIL AREA .00381-.00635 [0.000150-.000250] THICK  
 PER AMP SPEC 112-65-1.

3.30 [0.130]	DETAIL B	184 POSN. DIMM2P, 2.5V, PRE-PLATED CONTACTS	5390432-4
SOLDERTAIL LENGTH DIM "A"	KEY POSITION	DESCRIPTION	PART NUMBER
THIS DRAWING IS A CONTROLLED DOCUMENT.		DIM S.WAITMAN 9DEC04 CHK M.YEOMANS 9DEC04 APVD M.YEOMANS 9DEC04 PRODUCT SPEC 108-1753 APPLICATION SPEC 114-1115 WEIGHT - CUSTOMER DRAWING	
DIMENSIONS: mm [INCHES] 0 PLC ± - 1 PLC ± - 2 PLC ± 0.13 [0.005] 3 PLC ± - 4 PLC ± - ANGLES ± -		Tyco Electronics Corporation Harrisburg, Pa 17105-3608 NAME SOCKET ASSEMBLY, DIMM2P LOW INSERTION FORCE, 184 POSITION LEAD-FREE SIZE A1 CAGE CODE 00779 DRAWING NO. 5390432 RESTRICTED TO SCALE 1:1 SHEET 1 OF 2 REV A	

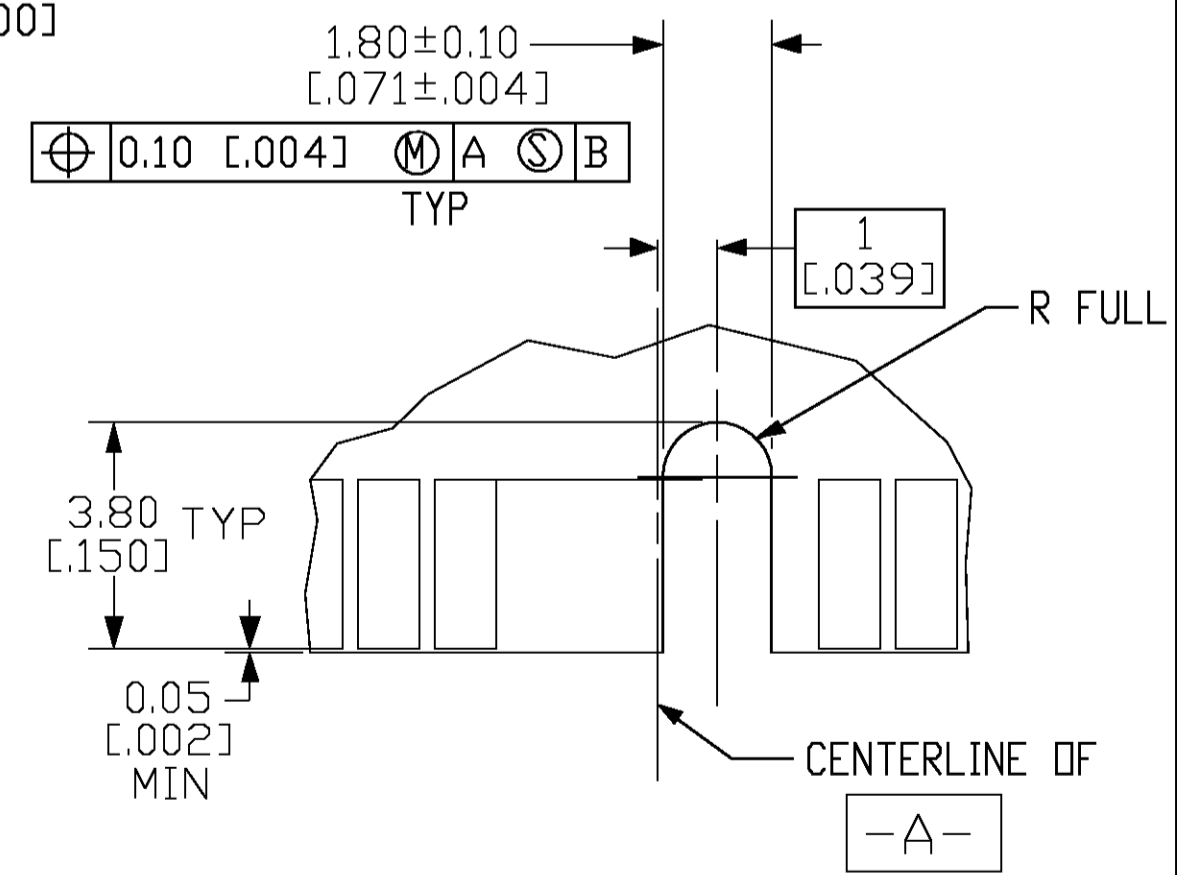
LOC		DIST		REVISIONS			
GP	0	P	LTR	DESCRIPTION	DATE	BY	APPR
				SEE SHEET 1			



DETAIL A  
SCALE 8:1



DETAIL B  
SCALE 8:1



DETAIL C  
SCALE 8:1

KEY POSITIONS

RECOMMENDED MODULE LAYOUT  
 SEE JEDEC SPEC MO-206 FOR COMPLETE MODULE DETAILS  
 1.27±0.10 [0.050±0.004] THICK ACROSS CONTACT PADS

THIS DRAWING IS A CONTROLLED DOCUMENT.		DWG: S. WAITMAN	9DEC04	Tyco Electronics Corporation Harrisburg, Pa 17105-3608
DIMENSIONS: mm [INCHES]		CHK: M. YEOMANS	9DEC04	
TOLERANCES UNLESS OTHERWISE SPECIFIED:		APP'D: M. YEOMANS	9DEC04	NAME: SOCKET ASSEMBLY, DIMM2P
0 PLG ± -		PRODUCT SPEC: 108-175.3		APPLICATION SPEC: 114-1115
1 PLG ± ±		SIZE: A1		CAGE CODE: 00779
2 PLG ± ±		DRAWING NO: 5390432		RESTRICTED TO: -
3 PLG ± ±		WEIGHT: -		CUSTOMER DRAWING: -
4 PLG ± ±		SCALE: 1:1		SHEET: 2 OF 2
ANGLES ± ±		REV: A		
MATERIAL: 1	FINISH: 2			