

4

3

2

1

THIS DRAWING IS UNPUBLISHED.

RELEASED FOR PUBLICATION

© COPYRIGHT

ALL RIGHTS RESERVED.

LOC DIST


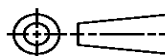
REVISIONS

P	LTR	DESCRIPTION	DATE	DWN	APVD

REPLACED BY OCEAN STYLE APPLICATOR PART NUMBER

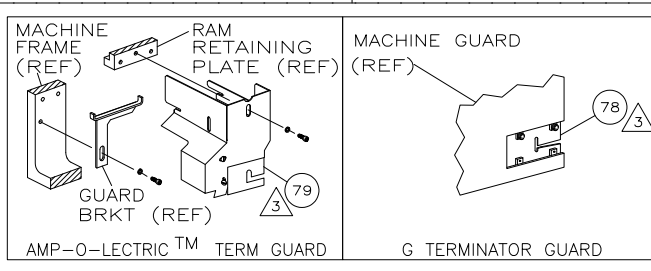
FOR REPLACEMENT PARTS FOR APPLICATOR REFER TO ADDITIONAL PAGE(S). SPARE PARTS KIT (IF LISTED) WILL REMAIN AVAILABLE.

THE REPLACEMENT OCEAN STYLE APPLICATOR HAS THE SAME TERMINATOR/PRESS INTERFACE AS APPLICATOR

THIS DRAWING IS A CONTROLLED DOCUMENT.		DWN	 TE Connectivity		
DIMENSIONS:		CHK			
TOLERANCES UNLESS OTHERWISE SPECIFIED:		APVD	NAME		
 0 PLC ± 1 PLC ± 2 PLC ± 3 PLC ± 4 PLC ± ANGLES ±		PRODUCT SPEC	RESTRICTED TO		
		APPLICATION SPEC	SIZE	CAGE CODE	DRAWING NO
MATERIAL	FINISH	WEIGHT	A3	C-	
		SCALE	SHEET	OF	REV

THIS DRAWING IS UNPUBLISHED. RELEASED FOR PUBLICATION
 © COPYRIGHT BY TYCO ELECTRONICS CORPORATION. ALL INTERNATIONAL RIGHTS RESERVED.

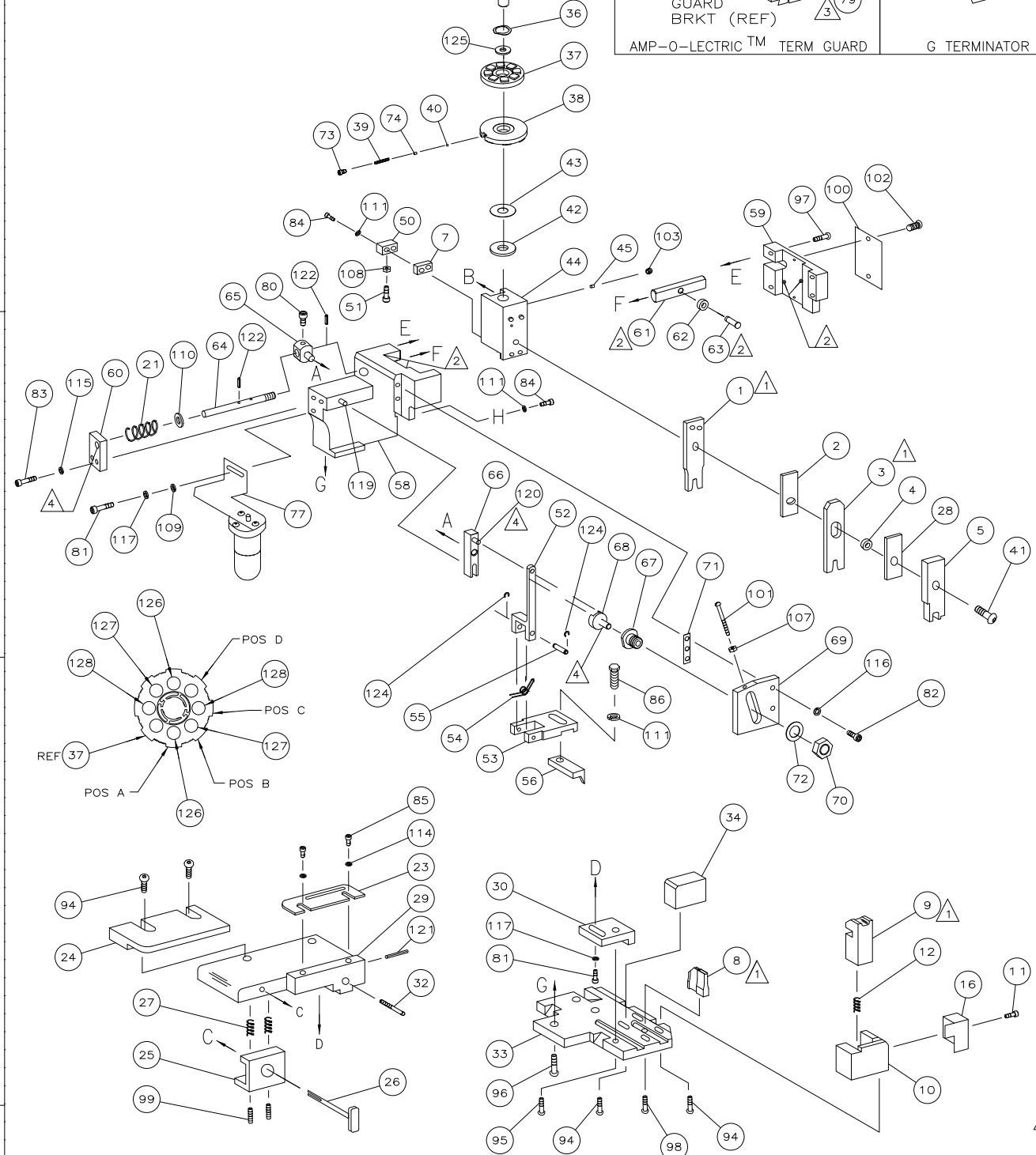
PART NUMBER	REV	FIRST USED
466324-1	M	854400-1
466324-2	M	565435-5
466324-3	M	354500-1
7-466324-7	K	-



TERMINAL NAME:	
TYPE III PIN & SOCKET	
PIN	SOCKET
66332	66331

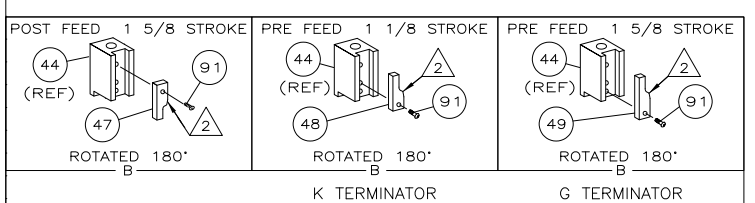
CRIMPING DATA			
PAD LTR	CRIMP HEIGHT	WIRE SIZE	
A	.042 ±.002	20	
B	.038 ±.002	22	
C	.036 ±.002	24	
D	NOT USED	USED	
CRIMP	SIZE	TYPE	RANGE
WIRE	.062	F	24-20
INSUL	.120	0	.080-.100
FEED	.500	APPL INST 408-8040	SET UP GAGE 458637-1 LAYOUT L270
WIRE STRIP LENGTH -			

LOC		DIST		REVISIONS			
A	66	P	LTR	DESCRIPTION	DATE	BY	APPD
		M		ECR-08-011180	5-2008	MY	GB

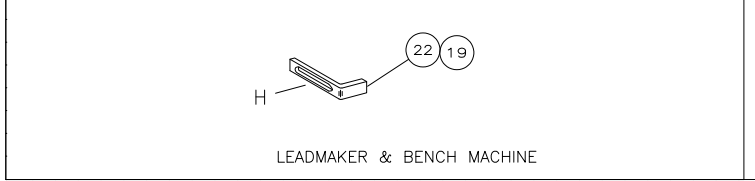


-	2	2	2	-	5-354779-2	PIN, WIRE DISC (.3250)C	129
-	2	2	2	-	4-354779-8	PIN, WIRE DISC (.3230)B	127
-	2	2	2	-	3-354779-8	PIN, WIRE DISC (.3180)A	126
-	1	1	1	-	986950-1	WASHER, FLAT PRECISION	125
-	REF	REF	REF	-	21045-3	RING,RET "c"(Ø.187)FD FING PIN	124
-	REF	REF	REF	-	5-21028-1	PIN,SLT SPR(Ø.125x.50)ADJ ROD	122
-	1	1	1	-	4-21028-0	PIN,SLT SPR(Ø.093x.75)ST GDE PL	121
-	REF	REF	REF	-	1-21030-1	PIN,DOWEL(Ø.187x.50)LEVER	120
-	REF	REF	REF	-	1-21030-6	PIN,DOWEL(Ø.187x1.25)HOUSING	119
-	1	2	1	-	21024-5	WASHER, LOCK(#10)ADJ BLOCK	117
-	REF	REF	REF	-	21024-5	WASHER,LOCK(#10)ADJ PLATE	116
-	REF	REF	REF	-	21024-5	WASHER,LOCK(#10)FEED GDE ROD	115
-	2	2	2	-	21024-2	WASHER,LOCK(#4)FRONT STP GUIDE	114
-	4	4	4	-	21024-4	WASHER,LOCK(#8)STRIPPER	111
-	REF	REF	REF	-	21899-4	WASHER,FLAT(Ø5/16)SCREW ADJ	110
-	1	1	1	-	21899-2	WASHER,FLAT(NO.10)LUB ASSY	109
-	1	1	1	-	21018-5	NUT,HEX(NO.6)HOLDDOWN	108
-	REF	REF	REF	-	21018-5	NUT,HEX(6-32)FEED ADJ	107
-	1	1	1	-	21009-2	SCR,SKT SET(1/4-20x.25 LW)RAM	103
-	2	2	2	-	21017-2	SCR,DRIVE(#2x.19)ID PLATE	102
-	REF	REF	REF	-	6-23715-5	SCR,PAN HD(6-32x1.50)FEED ADJ	101
-	1	1	1	-	461264-1	PLATE, IDENTIFICATION	100
-	2	2	2	-	5-21006-6	SCR,SET(10-32x.75)DRAG	99
-	1	1	1	-	22733-8	SCR,BHC(8-32x.38 LW)ANVIL	98
-	REF	REF	REF	-	2-21002-9	SCR,BHC(10-32x.75)CAP	97
-	REF	REF	REF	-	2-22733-8	SCR,BHC(1/4-20x.62)HOUSING	96
-	REF	REF	REF	-	2-21002-7	SCR,BHC(10-32x.50)SG ADJ BLOCK	95
-	4	4	4	-	2-21002-2	SCR,BHC(8-32x.50)TERM H DWN	94
-	1	1	1	-	1-21002-7	SCR,BHC(6-32x.38)CAM	91
-	1	1	1	-	2-22603-0	SCR,HEX HD(8-32x.31)FEED FINGER	86
-	2	2	2	-	1-21000-3	SCR,SHC(4-40x.25)F ST GUIDE	85
-	3	3	3	-	2-21000-7	SCR,SHC(8-32x.50)STRIPPER	84
-	REF	REF	REF	-	3-21000-7	SCR,SHC(10-32x.75)FEED ROD GD	83
-	REF	REF	REF	-	3-21000-6	SCR,SHC(10-32x.62)FD ADJ BLK	82
-	1	2	1	-	3-21000-4	SCR,SHC(10-32x.38)SG ADJ BL	81
-	REF	REF	REF	-	3-21000-4	SCR,SHC(10-32x.38)PIVOT BLK	80
-	REF	REF	REF	-	455749-1	GUARD, WINDOW	79
-	REF	REF	REF	-	679532-1	INSERT, GUARD	78
-	1	1	1	-	1-465184-0	LUBRICATOR ASSY	77
-	1	1	1	-	690603-1	SPRING, ASSIST	74
-	1	1	1	-	23030-1	SCR,SHC(6-32x.25 SL)INS DISC	73
-	REF	REF	REF	-	458109-1	WASHER, SPECIAL	72
-	REF	REF	REF	-	690517-1	SPACER	71
-77	-3	-2	-1	U/M			

QTY REQD PER ASSY		PARTS LIST		QTY REQD PER ASSY		PARTS LIST	
-	1	1	1	-	458537-2	PAWL, FEED	56
-	REF	REF	REF	-	240624-1	PIN, FEED FINGER	55
-	REF	REF	REF	-	691499-1	SPRING, FEED FINGER	54
-	REF	REF	REF	-	690541-1	HOLDER, FEED FINGER	53
-	REF	REF	REF	-	455679-1	LEVER, TERMINAL FEED ARM	52
-	1	1	1	-	811242-2	BUMPER, HOLDDOWN	51
-	1	1	1	-	690753-1	SPACER, TONKER	50
-	1	1	1	-	690602-6	CAM, PRE-FEED 1 5/8 ST	49
-	1	1	1	-	690602-5	CAM, PRE-FEED 1 1/8 ST	48
-	1	1	1	-	690501-4	CAM, POST-FEED 1 5/8 ST	47
-	1	1	1	-	459456-1	APPLICATOR, BASIC (SUBASSY)	46
-	1	1	1	-	690191-1	PLUG, NYLON	45
-	1	1	1	-	455673-1	RAM	44
-	1	1	1	-	690125-1	WASHER, LAMINATED	43
-	1	1	1	-	690124-1	WASHER, RAM	42
-	1	1	1	-	7-21002-9	BOLT, CRIMPER(5/16x1.00)	41
-	1	1	1	-	23241-6	BALL, STEEL	40
-	1	1	1	-	690170-1	SPRING, COMPRESSION	39
-	1	1	1	-	690142-1	DISC, INSULATION	38
-	1	1	1	-	354777-1	WIRE DISC, PLASTIC	37
-	1	1	1	-	22480-5	WASHER, SPRING	36
-	1	1	1	-	690212-1	POST, RAM	35
-	1	1	1	-	692776-1	SUPPORT, TERMINAL	34
-	REF	REF	REF	-	455675-1	PLATE, BASE	33
-	1	1	1	-	690432-3	SCREW, ADJUSTMENT	32
-	REF	REF	REF	-	455689-1	BLOCK, STRIP GUIDE ADJ	30
-	1	1	1	-	455671-1	PLATE, STRIP GUIDE	29
-	1	1	1	-	1-455888-0	SPACER, FRONT SHEAR DEP	28
-	2	2	2	-	1-22284-0	SPRING, DRAG	27
-	1	1	1	-	690546-1	LEVER, DRAG RELEASE	26
-	1	1	1	-	240792-1	DRAG, TERMINAL	25
-	1	1	1	-	6-690504-0	GUIDE, STRIP (REAR)	24
-	1	1	1	-	690438-1	GUIDE, STRIP (FRONT)	23
-	1	1	1	-	690472-2	STRIPPER	22
-	REF	REF	REF	-	4-22284-9	SPRING, FEED RETURN	21
-	1	1	1	-	691353-1	STRIPPER	19
-	1	1	1	-	3-22280-3	SPRING, SHEAR	12
-	1	1	1	-	690461-1	STOP, SHEAR	11
-	1	1	1	-	690459-1	HOLDER, SHEAR (FRONT)	10
-	1	1	1	-	454276-1	SHEAR, FLOAT (FRONT)	9
-	1	1	1	-	690514-8	ANVIL	8
-	1	1	1	-	3-240641-9	SPACER, DEPRESSOR (REAR)	7
-	1	1	1	-	455889-9	DEPRESSOR, SHEAR (FRONT)	5
-	1	1	1	-	2-238011-2	SPACER, BLOCK CRIMPER	4
-	1	1	1	-	2-456135-4	CRIMPER, INSULATION	3
-	1	1	1	-	455888-2	SPACER, CRIMPER	2
-	1	1	1	-	1-456403-2	CRIMPER, WIRE	1



- 1 RECOMMENDED SPARE PARTS.
- 2 GREASE LIGHTLY.
- 3 GUARD MUST BE IN PLACE WHEN OPERATING APPLICATOR IN A BENCH MACHINE.
- 4 LUBRICATE DAILY USING NO. 20 MACHINE OIL.
- 5. ITEMS WITH QTY OF REF SPECIFIED (EXCEPT ITEMS 78 AND 79) ARE USED ON ITEM 46.



THIS DRAWING IS A CONTROLLED DOCUMENT.

APPROVED: T. REDDICK
 DATE: 10-28-94

DESIGNED: M. O'BRINE
 DATE: 10-28-94

DRAWN: C. ERISMAN
 DATE: 10-28-94

TYCO ELECTRONICS CORPORATION
 HARRISBURG, PA 17105-3608

NAME: SIDE FEED HDM APPLICATOR

APPLICATION SPEC: -

WEIGHT: -

CUSTOMER DRAWING: A100779

SCALE: -

SHEET 1 OF 1

REV M