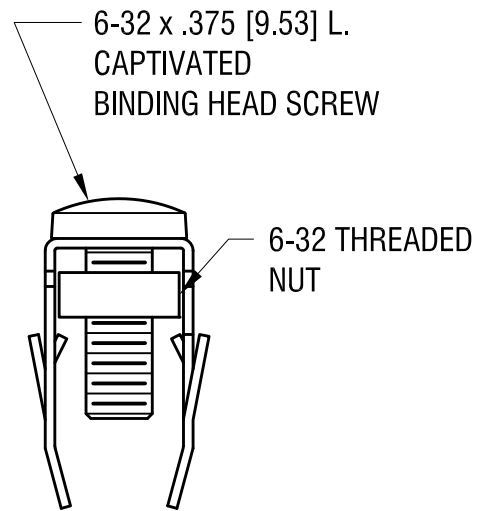
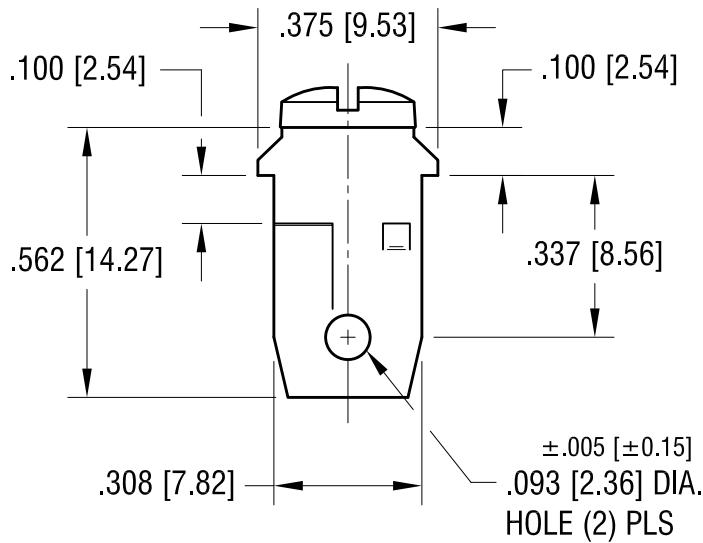
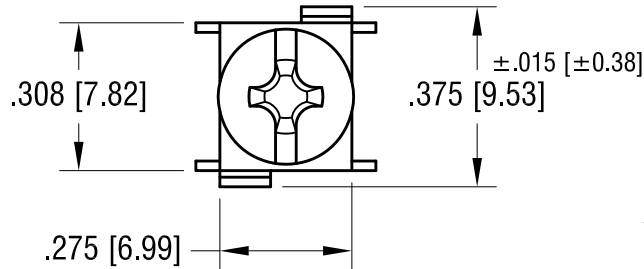
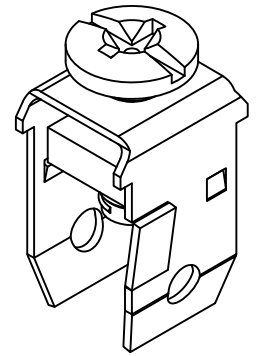


THIS DOCUMENT IS THE PROPERTY OF KEYSTONE ELECTRONICS CORP. AND SHALL NOT BE REPRODUCED, DISTRIBUTED OR USED AS A BASIS FOR MANUFACTURE WITHOUT PRIOR WRITTEN PERMISSION FROM KEYSTONE ELECTRONICS CORP.



NOTE:

1. HEAT TREAT TO SPRING TEMPER
2. TERMINAL: MAT'L: .020 [0.50] TH'K STEEL
FINISH: MATTE TIN PLATE
- SCREW/NUT: MAT'L: STEEL
FINISH: ZINC PLATE
3. PRESS-FIT INTO .312 [7.92] SQ. HOLE

7.16.09	CHANGE AS PER ECN 09-106	B
4.17.96	CHANGE AS PER ECR 96-020	A
DATE	DESCRIPTION	REV.

KEYSTONE ELECTRONICS CORP.			
www.keyelco.com • ASTORIA, N.Y. 11105-2017 • Tel (718) 956-8900			
PART NAME		PRESS-FIT SCREW TERMINAL	
MATERIAL		AS NOTED	
FINISH		AS NOTED	
DRN BY	BOONE	DATE	5.7.82
APP'D	LN	SCALE	2.5X
TOLERANCES	INCH [MM]	CODE	DWG NO.
DECIMAL	± .010 [± 0.25]	C	1272
ANGULAR	± 1°		
UNLESS OTHERWISE SPECIFIED			