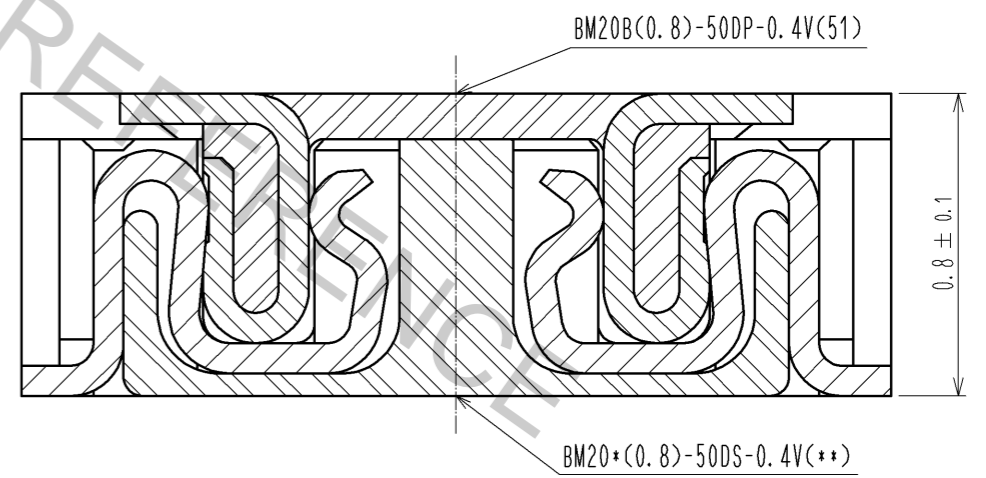
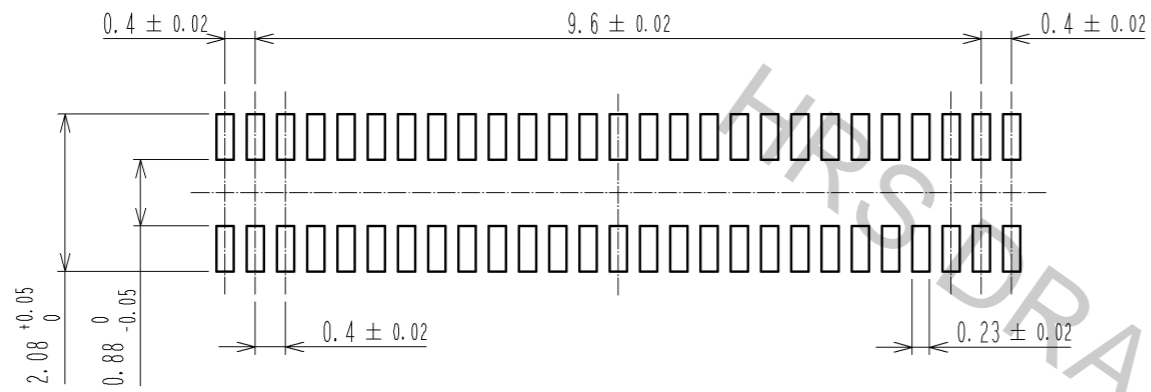


ENGAGEMENT FIGURE (50:1) \triangle



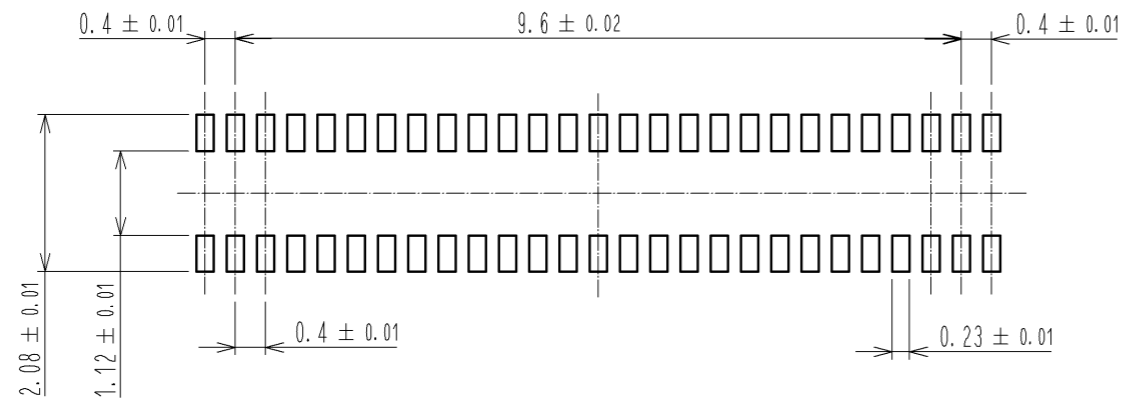
- NOTE 1 . ALL LEAD CO-PLANARITY SHALL BE 0.08mm MAX
- \triangle CONTACT PLATING SPECIFICATIONS
 CONTACT AREA : GOLD 0.05 μ m MIN
 SMT LEAD : GOLD 0.05 μ m MIN
 UNDER PLATING : NICKEL 1 μ m MIN
 (SURFACE : SEALING)
 - \triangle EACH CONTACTS AT 4 CORNERS ARE PROVIDED FOR METAL FITTINGS.
 - \triangle HRS MARK AND CAV No. ARE INDICATED IN APPROX POSITION SHOWN.
 - \triangle A PART OF THE WALL COULD BE NOTCHED.

3	PS	CLEAR (EMBOSSED CARRIER TAPE)	6	PS	CLEAR (REINFORCEMENT COLLAR)	
2	PHOSPHOR BRONZE	\triangle	5	PS	BLACK (PLASTIC REEL)	
1	LCP	UL94 V-0, BLACK	4	POLYESTER	CLEAR (COVER TAPE)	
NO.	MATERIAL	FINISH . REMARKS	NO.	MATERIAL	FINISH . REMARKS	
UNITS mm	\odot \triangle	SCALE 10 : 1	COUNT \triangle 3	DESCRIPTION OF REVISIONS		
				DESIGNED YK. SATAKE	CHECKED TS. MIYAZAKI	DATE 12. 01. 07
APPROVED : KH. IKEDA 11. 09. 22			DRAWING NO. EDC3-332312-01			
CHECKED : TS. MIYAZAKI 11. 09. 22			PART NO. BM20B(0.8)-50DP-0.4V(51)			
DESIGNED : YK. SATAKE 11. 09. 22			CODE NO. CL684-9006-9-51			
DRAWN : KR. AJITO 11. 09. 20			1/3			

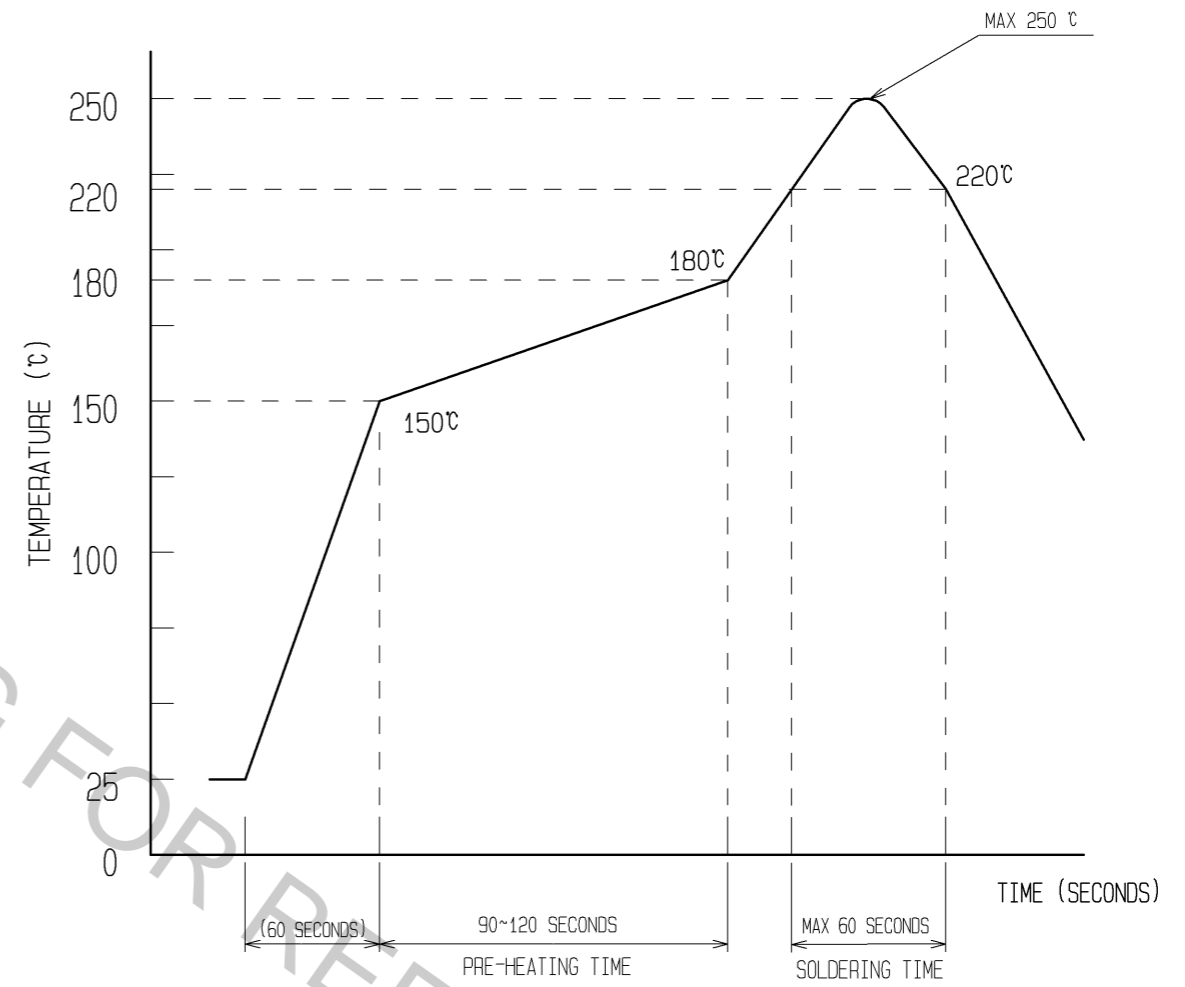


◆ RECOMMENDED METAL MASK DIMENSIONS \triangle

METAL MASK THICKNESS : 100 μ m



6 RECOMMENDED REFLOW TEMPERATURE PROFILE USING LEAD-FREE SOLDER PASTE.

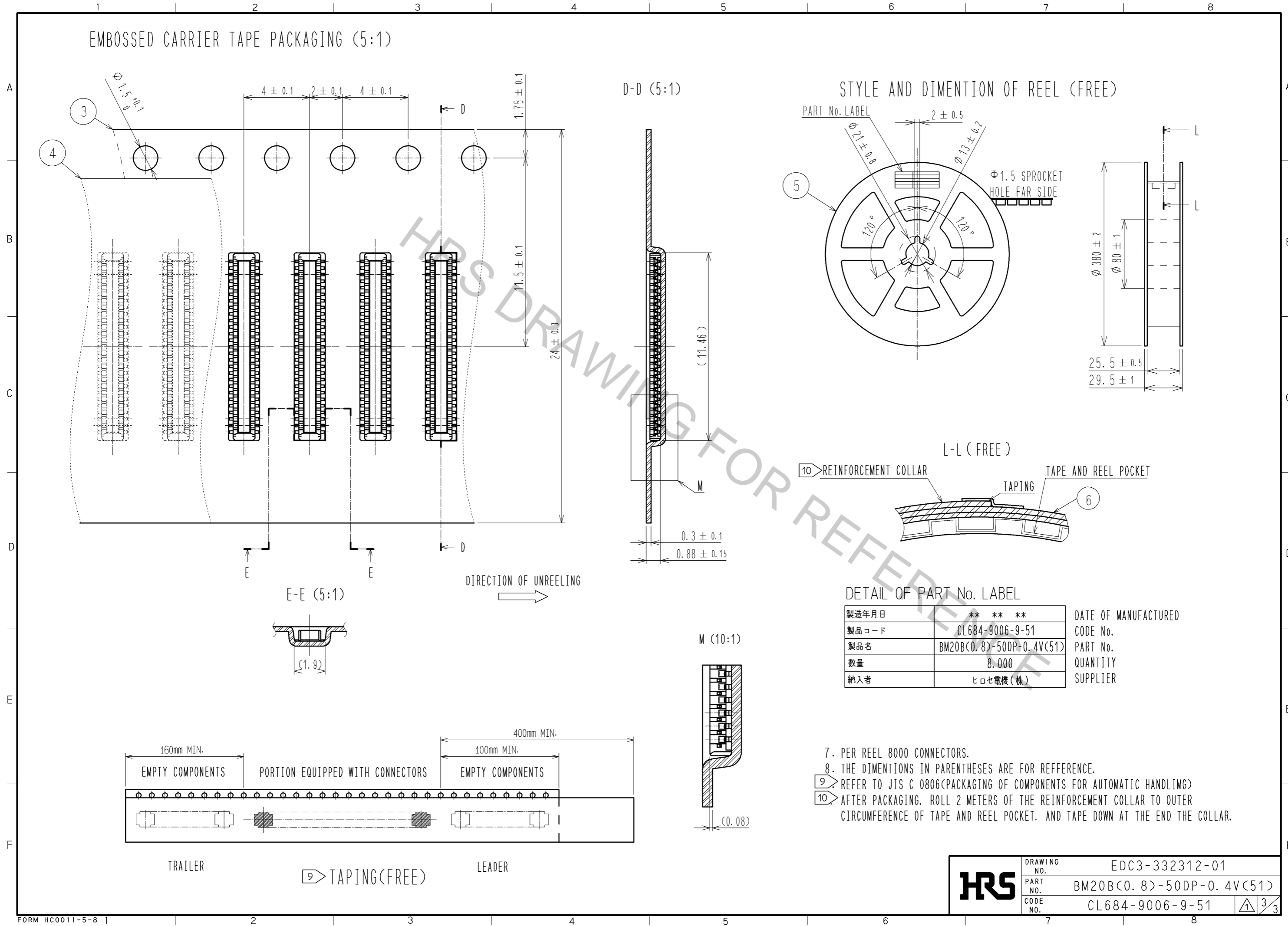


REFLOW METHOD: IR REFLOW
 NUMBER OF REFLOW CYCLES: 2 CYCLES MAX.
 1) REFLOW TIME
 DURATION ABOVE 220°C: 60 SEC MAX.
 (PEAK TEMPERATURE: 250°C MAX)
 2) PRE-HEAT TIME
 PRE-HEAT TEMPERATURE(MIN): 150°C
 PRE-HEAT TEMPERATURE(MAX): 180°C
 PRE-HEAT TIME: 90-120 SEC.

6 THIS TEMPERATURE PROFILE IS PER THE CONDITIONS SHOWN ABOVE. ADDITIONAL FACTORS, SUCH AS SOLDER PASTE TYPE, PCB SIZE AND OTHER MOUNTED COMPONENTS COULD AFFECT THE PROFILE. THEREFORE, A THOROUGH EVALUATION OF MOUNTING COONDITION IS REQUIRED PRIOR TO PRODUCTION. TEPERATURE IS MEASURED AT CONTACT LEAD.

HRS	DRAWING NO.	EDC3-332312-01
	PART NO.	BM20B(0.8)-50DP-0.4V(51)
	CODE NO.	CL684-9006-9-51 \triangle 2/3

EMBOSSED CARRIER TAPE PACKAGING (5:1)



DETAIL OF PART No. LABEL

製造年月日	** ** *	DATE OF MANUFACTURED
製品コード	CL684-9006-9-51	CODE No.
製品名	BM20B(0.8)-50DP-0.4V(51)	PART No.
数量	8,000	QUANTITY
納入者	ヒロセ電機(株)	SUPPLIER

- 7. PER REEL 8000 CONNECTORS.
- 8. THE DIMENTIONS IN PARENTHESES ARE FOR REFERENCE.
- 9 REFER TO JIS C 0806(PACKAGING OF COMPONENTS FOR AUTOMATIC HANDLING)
- 10 AFTER PACKAGING, ROLL 2 METERS OF THE REINFORCEMENT COLLAR TO OUTER CIRCUMFERENCE OF TAPE AND REEL POCKET. AND TAPE DOWN AT THE END THE COLLAR.

HRS	DRAWING NO.	EDC3-332312-01
	PART NO.	BM20B(0.8)-50DP-0.4V(51)
	CODE NO.	CL684-9006-9-51
		$\triangle 3/3$

Apr.1.2017 Copyright 2017 HIROSE ELECTRIC CO., LTD. All Rights Reserved.