



# SAW Mobile Communications

## Series/Type: **B7740**

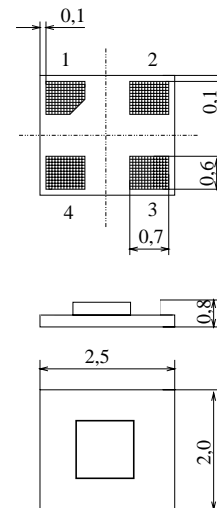
The following products presented in this data sheet are being withdrawn.

Ordering Code	Substitute Product	Date of Withdrawal	Deadline Last Orders	Last Shipments
B39202B7740C810	B39202B9008E610	06.07.2007	31.01.2008	30.04.2008

For further information please contact your nearest EPCOS sales office, which will also support you in selecting a suitable substitute. The addresses of our worldwide sales network are presented at [www.epcos.com/sales](http://www.epcos.com/sales).


**Chip Sized SAW Package DCS4D**
**Features**

- RF filter for mobile telephone PCS systems, receive path
- Low insertion loss, low amplitude ripple
- Usable passband 60 MHz
- Suitable for GPRS class 1 to 12
- Package for Surface Mounted Technology (SMT)



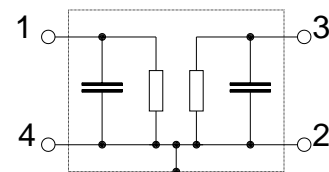
Dimensions in mm, approx. weight 0,012 g

**Terminals**

- Gold-plated Ni

**Pin configuration**

- |     |        |
|-----|--------|
| 1   | Input  |
| 3   | Output |
| 2,4 | Ground |



Type	Ordering code	Marking and Package according to	Packing according to
B7740	B39202-B7740-C810	C61157-A7-A89	F61074-V8125-Z000

Electrostatic Sensitive Device (ESD)

**Maximum ratings**

Operating temperature range	$T$	- 10/+ 80	°C	
Storage temperature range	$T_{stg}$	- 40/+ 85	°C	
DC voltage	$V_{DC}$	3	V	
ESD voltage	$V_{ESD}$	50	V	
Input Power at				
GSM850, GSM900	$P_{IN}$	15	dBm	peak power of GSM signal, duty cycle 4:8
GSM1800, GSM1900	$P_{IN}$	12	dBm	
tx bands				


**Characteristics**

Operating temperature range :	$T = 25\text{ °C} \pm 2\text{ °C}$
Terminating source impedance:	$Z_S = 50\ \Omega$
Terminating load impedance:	$Z_L = 50\ \Omega$

		min.	typ.	max.	
<b>Center frequency</b>	$f_C$	—	1960,0	—	MHz
<b>Maximum insertion attenuation</b>	$\alpha_{\max}$	—	2,8	3,2	dB
1930,0... 1990,0 MHz					
<b>Amplitude ripple (p-p)</b>	$\Delta\alpha$	—	1,3	1,7	dB
1930,0... 1990,0 MHz					
<b>Attenuation</b>	$\alpha$				
DC ... 1500,0 MHz		28	31	—	dB
1500,0.. 1830,0 MHz		25	29	—	dB
1830,0.. 1910,0 MHz		12	14	—	dB
2010,0... 2070,0 MHz		12	14	—	dB
2070,0... 2500,0 MHz		21	23	—	dB
2500,0... 3000,0 MHz		24	28	—	dB
3000,0... 4500,0 MHz		28	35	—	dB
4500,0... 5200,0 MHz		26	32	—	dB
5200,0... 6000,0 MHz		24	30	—	dB
<b>Input vswr</b>					
1930,0... 1990,0 MHz		---	2,2	2,3	
<b>Output vswr</b>					
1930,0... 1990,0 MHz		---	2,2	2,3	
<b>Tx band suppression</b>	$\alpha$				
1830,0.. 1910,0 MHz		12	14	—	dB

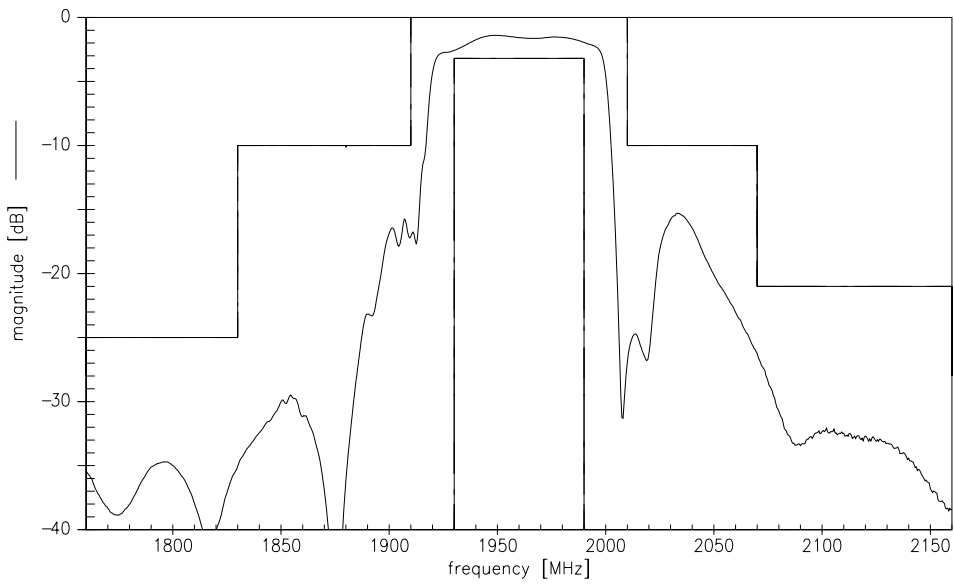

**Characteristics**

Operating temperature range :  $T = -10$  to  $+80$  °C  
 Terminating source impedance:  $Z_S = 50 \Omega$   
 Terminating load impedance:  $Z_L = 50 \Omega$

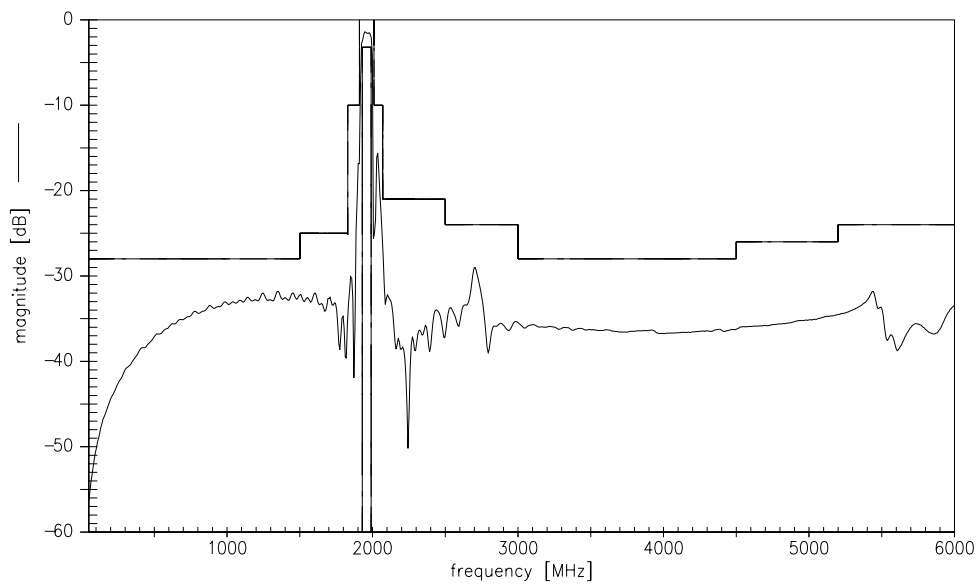
		min.	typ.	max.	
<b>Center frequency</b>	$f_C$	—	1960,0	—	MHz
<b>Maximum insertion attenuation</b>	$\alpha_{\max}$	—	2,8	3,2	dB
1930,0... 1990,0 MHz					
<b>Amplitude ripple (p-p)</b>	$\Delta\alpha$	—	1,3	1,7	dB
1930,0... 1990,0 MHz					
<b>Attenuation</b>	$\alpha$				
DC ... 1500,0 MHz		28	31	—	dB
1500,0.. 1830,0 MHz		25	29	—	dB
1830,0.. 1910,0 MHz		10	13	—	dB
2010,0... 2070,0 MHz		10	13	—	dB
2070,0... 2500,0 MHz		21	23	—	dB
2500,0... 3000,0 MHz		24	28	—	dB
3000,0... 4500,0 MHz		28	35	—	dB
4500,0... 5200,0 MHz		26	32	—	dB
5200,0... 6000,0 MHz		24	30	—	dB
<b>Input vswr</b>					
1930,0... 1990,0 MHz		---	2,2	2,3	
<b>Output vswr</b>					
1930,0... 1990,0 MHz		---	2,2	2,3	
<b>Tx band suppression</b>	$\alpha$				
1830,0.. 1910,0 MHz		10	13	—	dB



**Transfer function**  
**narrow band**



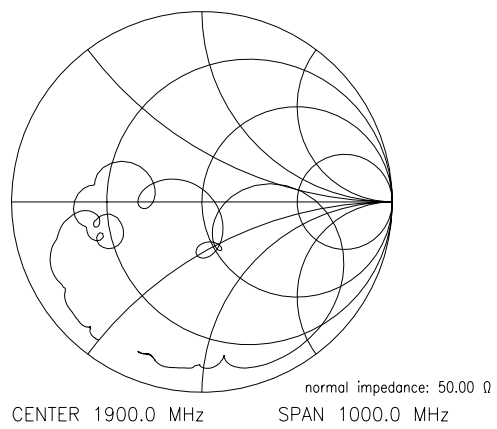
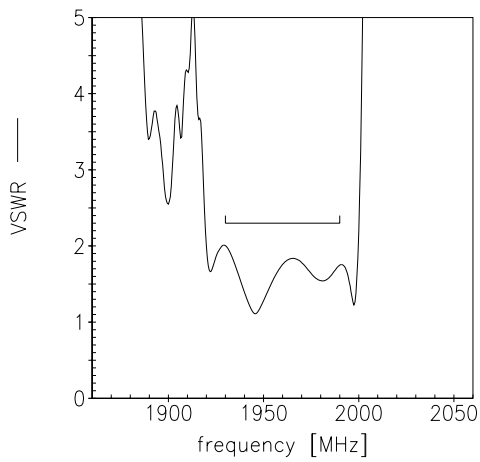
**wide band**



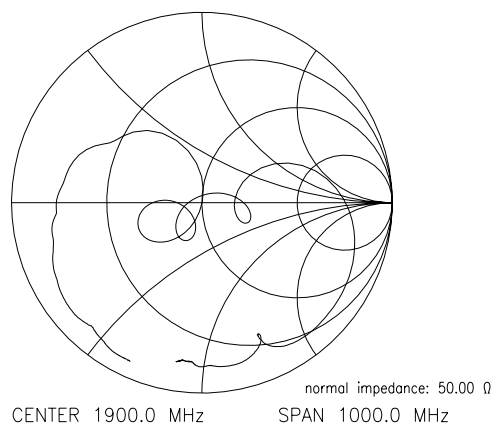
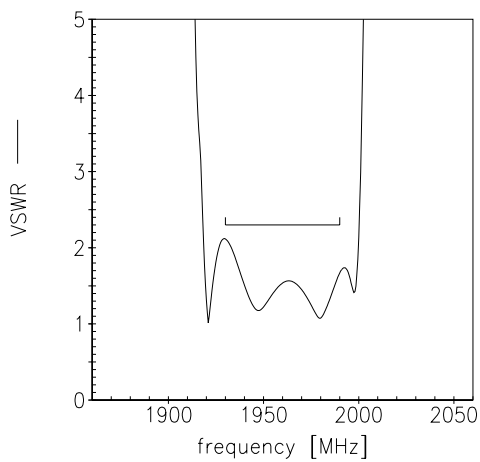


Reflection functions

$S_{11}$



$S_{22}$



**Published by EPCOS AG****Surface Acoustic Wave Components Division, SAW MC WT****P.O. Box 80 17 09, 81617 Munich, GERMANY**

© EPCOS AG 2002. Reproduction, publication and dissemination of this brochure and the information contained therein without EPCOS' prior express consent is prohibited.

Purchase orders are subject to the General Conditions for the Supply of Products and Services of the Electrical and Electronics Industry recommended by the ZVEI (German Electrical and Electronic Manufacturers' Association), unless otherwise agreed.

This brochure replaces the previous edition.

For questions on technology, prices and delivery please contact the Sales Offices of EPCOS AG or the international Representatives.

Due to technical requirements components may contain dangerous substances. For information on the type in question please also contact one of our Sales Offices.