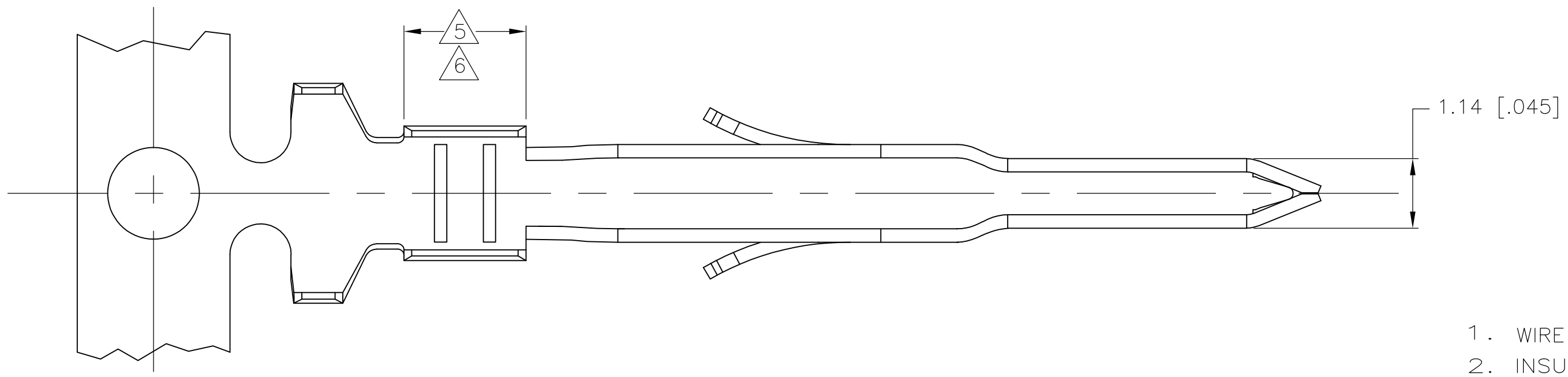
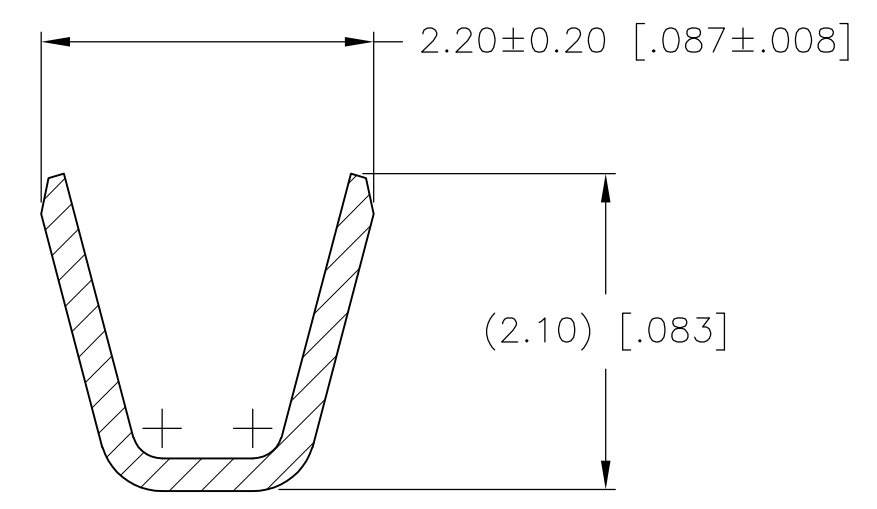
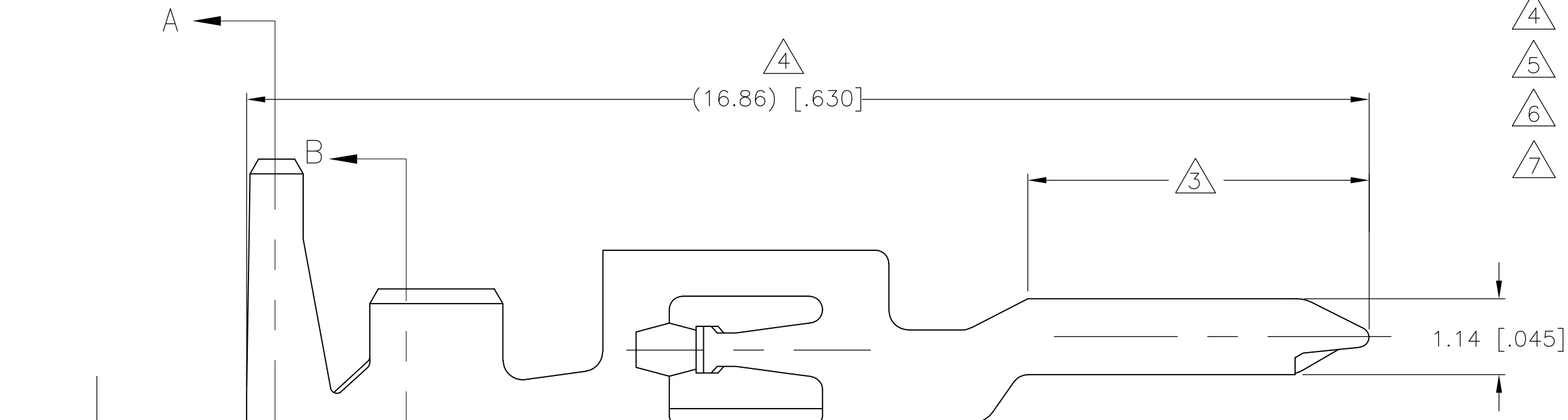


THIS DRAWING IS UNPUBLISHED. RELEASED FOR PUBLICATION  
 © COPYRIGHT BY TYCO ELECTRONICS CORPORATION. ALL RIGHTS RESERVED.

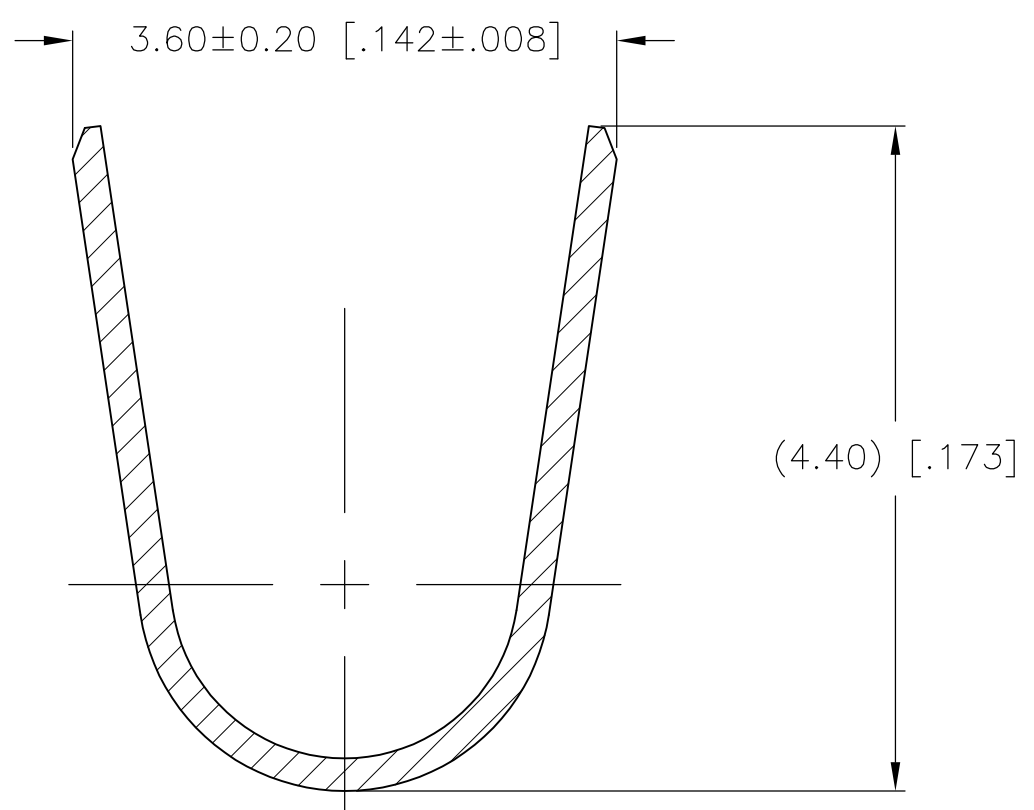
LOC		DIST		REVISIONS			
P	LTR	DESCRIPTION		DATE	DWN	APVD	
	D	REVISED PER 0G3B-1115-04		23JUNE05	KW	DC	
	D1	REVISED PER ECO-09-023313		09OCT09	KK	AEG	



1. WIRE RANGE: 0.30-0.87mm<sup>2</sup> (22-18 AWG).
2. INSULATION RANGE: 1.50-2.40 DIA.
- 3 FINISH: 0.76μm MINIMUM GOLD OVER 1.27μm MINIMUM NICKEL REQUIRED
- 4 FINISH: NICKEL BASE PLATE ON ALL SURFACES IN THIS AREA.
- 5 FINISH: 2.54μm MINIMUM TIN-LEAD ON ALL SURFACES IN THIS AREA.
- 6 FINISH: 2.54μm MINIMUM TIN ON ALL SURFACES IN THIS AREA.
- 7 OBSOLETE PARTS: OBSOLETE CIS STREAMLINING PER D.RENAUD/D.SINISI



SECTION B-B  
SCALE 20:1



SECTION A-A  
SCALE 20:1

FINISH	MATERIAL	PART NUMBER
3 4 6	0.22 [.009] PHOS BRONZE	794576-4
7 SUPERCEDED 3 4 5	0.22 [.009] PHOS BRONZE	794576-2-
PRE-TIN	0.22 [.009] PHOS BRONZE	794576-1

**METRIC**

THIS DRAWING IS A CONTROLLED DOCUMENT.		DWN S. HOOVER 07-FEB-2003	Tyco Electronics Corporation Harrisburg, Pa 17105-3608	
DIMENSIONS: mm [INCHES]		CHK D. COLEY 07-FEB-2003	NAME CONTACT, MALE, AMP-DUAC(TM)	
TOLERANCES UNLESS OTHERWISE SPECIFIED:		APVD D. COLEY 07-FEB-2003	SIZE A2 CAGE CODE 00779 C=794576	
0 PLC ±	1 PLC ±	PRODUCT SPEC 108-1646	DRAWING NO 114-6067	
2 PLC ±	3 PLC ±	APPLICATION SPEC 114-6067	RESTRICTED TO -	
4 PLC ±	ANGLES ±	FINISH SEE TABLE	SCALE 14:1 SHEET 1 OF 1 REV D1	
MATERIAL 0.22 [.009]PH BRZ		CUSTOMER DRAWING		