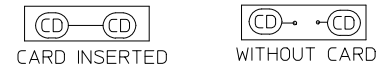
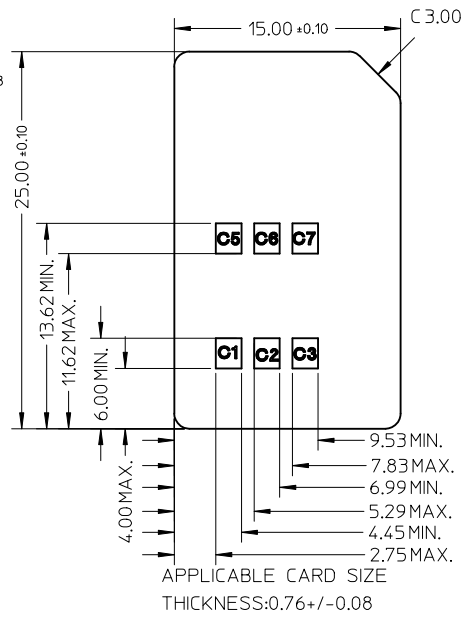
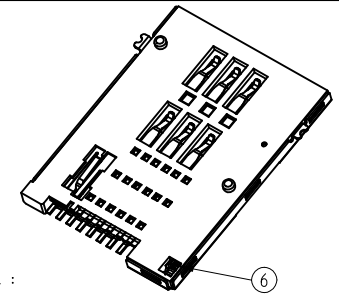
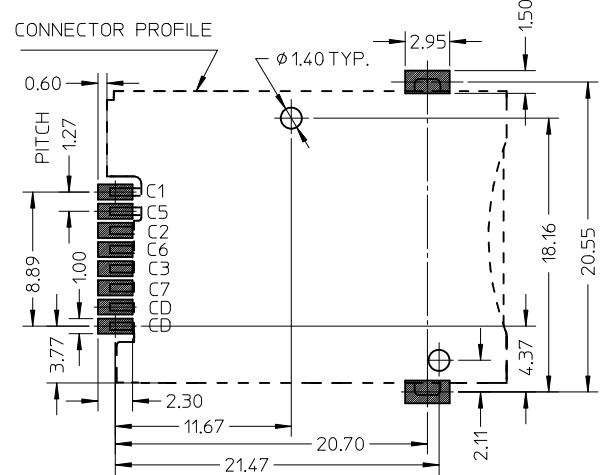
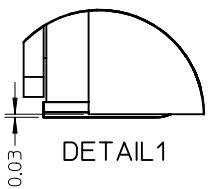
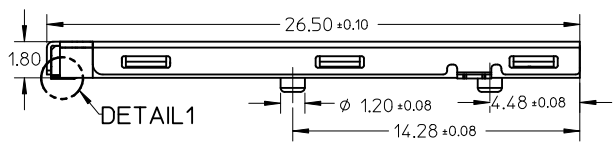


- NOTES:
- 1 FINISH:
    - 1-1 TERMINAL :
      - 50~200μ NICKEL UNDER PLATED
      - 15μ GOLD PLATING ON CONTACT AREA
      - 3μ MIN GOLD FLASH ON SOLDERING AREA
    - 1-2 SHELL :
      - 50~200μ NICKEL UNDER PLATED
      - 3μ MIN GOLD FLASH ON SOLDERING AREA
    - 1-3 DETECT PIN :
      - 50~200μ NICKEL UNDER PLATED
      - 3μ MIN GOLD PLATING ON CONTACT AREA
      - 3μ MIN GOLD PLATING ON SOLDERING AREA
  - 2 SOLDER TAIL COPLANARITY: 0.08MM MAX.
  - 3 TERMINAL TIP MUST SINK INTO HOUSING
  - 4 PRODUCT COMPLIANT TO ROHS DIRECTIVE 2002/95/EC AND ELV DIRECTIVE 2000/53/EC
  - 5 DETECT SWITCH: INSERT CARD=ON (NORMAL=OPEN)
  - 6 SPRING RISE UP DURING PUSH-PUSH PERIOD
  - 7 PACKAGE DRAWING: PK-47553-001
  - 8 PRODUCT SPECIFICATION: PS-47553-201



NO.	DESCRIPTION	Q'TY	MATERIAL
1	HOUSING	1	HIGH TEMPERATURE THERMOPLASTIC
2	TERMINAL	6	COPPER ALLOY
3	DETECT PIN LOWER	1	COPPER ALLOY
4	DETECT PIN UPPER	1	COPPER ALLOY
5	SHELL	1	STAINLESS STEEL
6	COIL SPRING	1	PIANO WIRE
7	HEART CAM	1	HIGH TEMPERATURE THERMOPLASTIC
8	CAM PIN	1	STAINLESS STEEL



RECOMMENDED PCB LAYOUT TOLERANCE +/-0.05MM

NEW DIM TOL CTRL EC NO: DRW/KHL/IM CHKD: JIAN02 APPR: REV	2011/05/27	DESCRIPTION	QUALITY SYMBOLS
			▽=0
			∇=0

GENERAL TOLERANCES (UNLESS SPECIFIED)	
	mm INCH
4 PLACES	± --- ± ---
3 PLACES	± --- ± ---
2 PLACES	± 0.15 ± ---
1 PLACE	± --- ± ---
ANGULAR ± --- °	
DRAFT WHERE APPLICABLE MUST REMAIN WITHIN DIMENSIONS	

DIMENSION STYLE	
MM ONLY	
DRAWN BY	DATE
LHSHEN	2007/07/09
CHECKED BY	DATE
XUXIANG	2007/08/30
APPROVED BY	DATE
HWWANG	2007/08/30
MATERIAL NO.	
475532001	
SIZE	
A3	

SCALE	DESIGN UNITS	THIRD ANGLE PROJECTION	
NTS	METRIC		
TITLE			
PUSH PUSH 6 PINS SIM WITH DETECT PIN&POST SALES DRAWING			
MOLEX INCORPORATED			
DOCUMENT NO.	SHEET NO.		
SD-47553-201	1 OF 1		