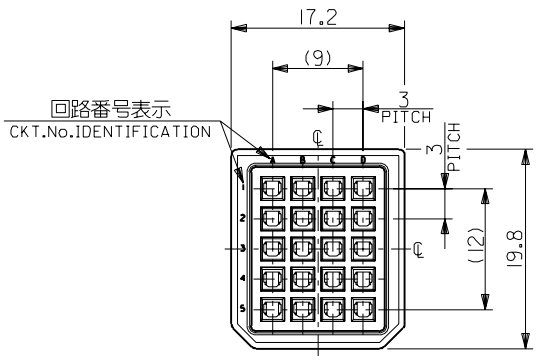
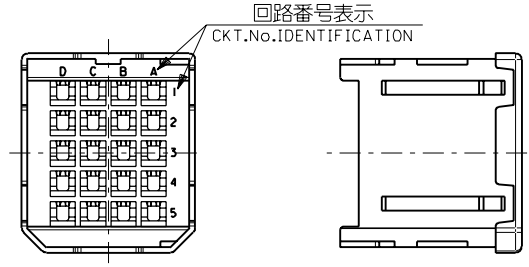
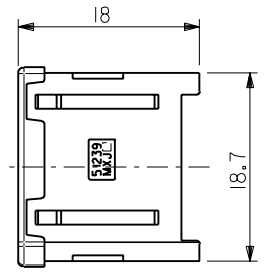


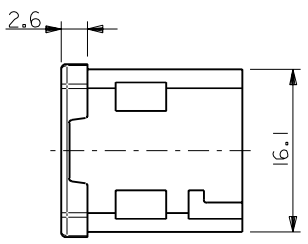
DWG. NO. SD-51239-005



嵌合側
MATING SIDE



電線挿入側
WIRE SIDE



注記
NOTES

1. 材質
MATERIAL
ガラス入りPBT樹脂 UL94V-0 色:黒
HOUSING : PBT G.F. UL94V-0 COLOR : BLACK
2. 適用端子 : 56120-8*90 , 56121-8*90
APPLICABLE CRIMP PIN : 56120-8*90 , 56121-8*90
3. 適用シエルボディ : 56380-2000
APPLICABLE SHELL BODY : 56380-2000
4. 適用シエルカバー : 56381-2000
APPLICABLE SHELL COVER : 56381-2000
5. 嵌合相手 : 51233-201*
MEET WITH : 51233-201*

<誤嵌合防止キー(極性)タイプ> <POLARITY KEY TYPE>

51234-2001	51234-2002	51234-2003	51239-2004	51239-2005
STANDARD TYPE	A TYPE	B TYPE	C TYPE	D TYPE

C-4	D	51239-2005	51239-***0*	20
C-3	C	51239-2004		
B-3	B	51239-2003		
B-2	A	51239-2002		
—	STANDARD	51239-2001		
POLARITY POSITION (CIRCUIT No.)	POLARITY TYPE	MATERIAL No.	MODEL No.	CIRCUIT

DO NOT SCALE DRAWING

EC NO. DRWN: CHK: APPR:	EC NO. DRWN: CHK: APPR:	EC NO. DRWN: CHK: APPR:
----------------------------------	----------------------------------	----------------------------------

REVISED 01/10/04 EC NO. J2002-0786 DRWN: S.AKIYAMA CHK: J.MIYAZAWA APPR: Y.O.ITO	RELEASED 01/02/09 EC NO. JD2001-1040 DRWN: S.AKIYAMA CHK: J.MIYAZAWA APPR: H.IKESUGI
--	--

MATERIAL 材料	注記参照 SEE NOTES
FINISH 仕上げ	—
WIRE RANGE 適用電線範囲	—
INS. RANGE 被覆外径	—

GENERAL TOLERANCES: (UNLESS SPECIFIED) 一般公差	SCALE 2-1	DESIGN UNITS mm INCH
10 UNDER 未満	±0.2	
10 OVER 30 UNDER 以上 未満	±0.25	
30 OVER 以上	±0.3	
ANGLE 角度	±3°	

DRAWN BY & DATE S. Akiyama 1/01/25	CHECKED BY & DATE J. Miyazawa / Y. Ito	APPROVED BY & DATE H. Ikesugi
CAD FILE NAME 51239005.S01		

DIMENSIONS: <input type="checkbox"/> mm <input type="checkbox"/> INCH <input checked="" type="checkbox"/> mm ONLY		SHT	REV
THIRD ANGLE PROJECTION			
TITLE: COMPACT ROBOT CONN. (CRC) PLUG SOCKET HS'G			
MOLEX INCORPORATED			
MATERIAL NO. SEE CHART	DRAWING NO. SD-51239-005	SHEET NO. 1 OF 1	SIZE B

THIS DRAWING CONTAINS INFORMATION THAT IS PROPRIETARY TO MOLEX INCORPORATED AND SHOULD NOT BE USED WITHOUT WRITTEN PERMISSION.