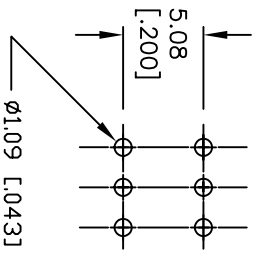
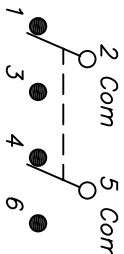


2.54
[.100] TYP.



RECOMMENDED P.C.B. LAYOUT

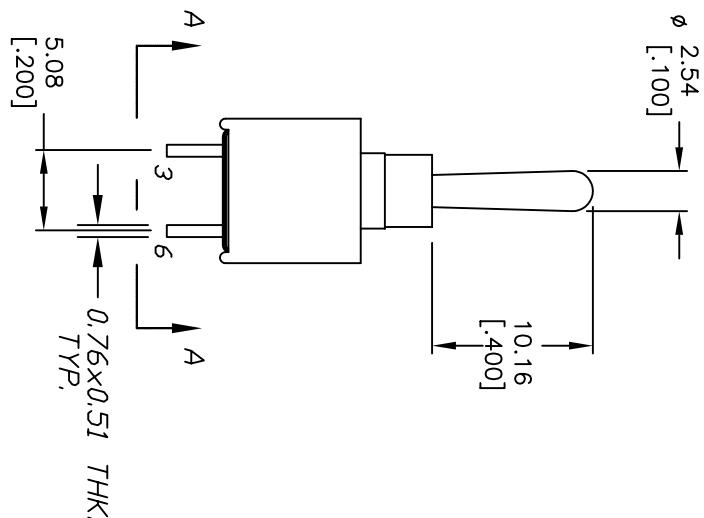
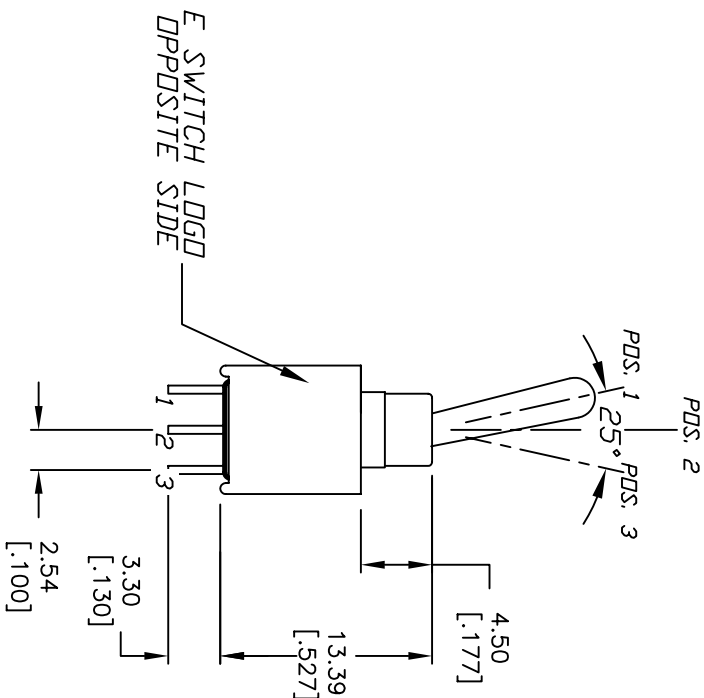
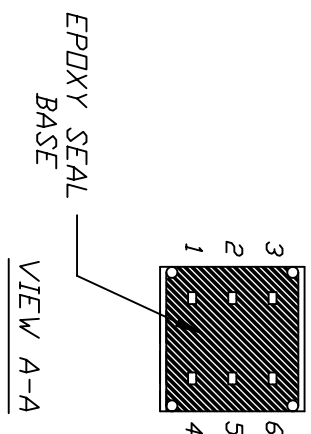
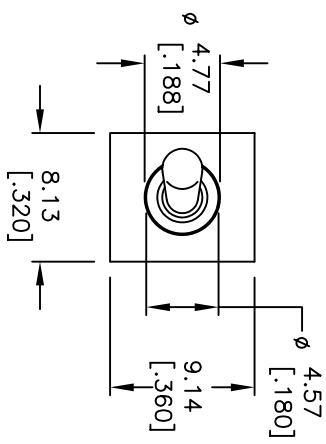


CIRCUIT: 2PDT

SWITCH FUNCTION		
PDS. 1	PDS. 2	PDS. 3
DN	NONE	DN
2-3,5-6	DPEN	2-1,5-4

NOTES:

1. ALL DIMENSIONS IN MM [INCH]
2. GENERAL TOLERANCE: X.X=±0.4
X.XX=±0.25
3. TERM. NOS. FOR REF. ONLY
4. RATING: 0.4VA max. @20V (AC or DC)
5. FIXED TERM. & MOVING CONTACT:
Copper alloy w/GOLD Plate over
Nickel plate.
6. ELECTRICAL LIFE: 50,000 CYCLES
7. INSULATION RESISTANCE: 1000M ohm min.
8. CONTACT RESISTANCE: <20 MILLI-OHMS typ.
(Initial @2-4VDC)
9. DIELECTRIC STRENGTH: 1000V RMS min. @sea level.
10. OPERATING TEMP.: -30°C to 85°C
11. 2002/95/EC (ROHS) COMPLIANT



REV.	ECN NO.	DESCRIPTION	DATE	CHKD
B	17018	UPDATED NOTES, ADDED E NOTE	2/21/07	TN
A	11590	RELEASED FOR PRODUCTION	5/30/02	CJB

TITLE	SCALE	DATE	DR	DWG	REV
200A WMDP1T1A1M2RE	2:1	2/21/07	TN	T201200	B



THE INFORMATION CONTAINED IN THIS DOCUMENT IS PROPRIETARY TO E-SWITCH AND IS NOT TO BE COPIED OR TRANSFERRED