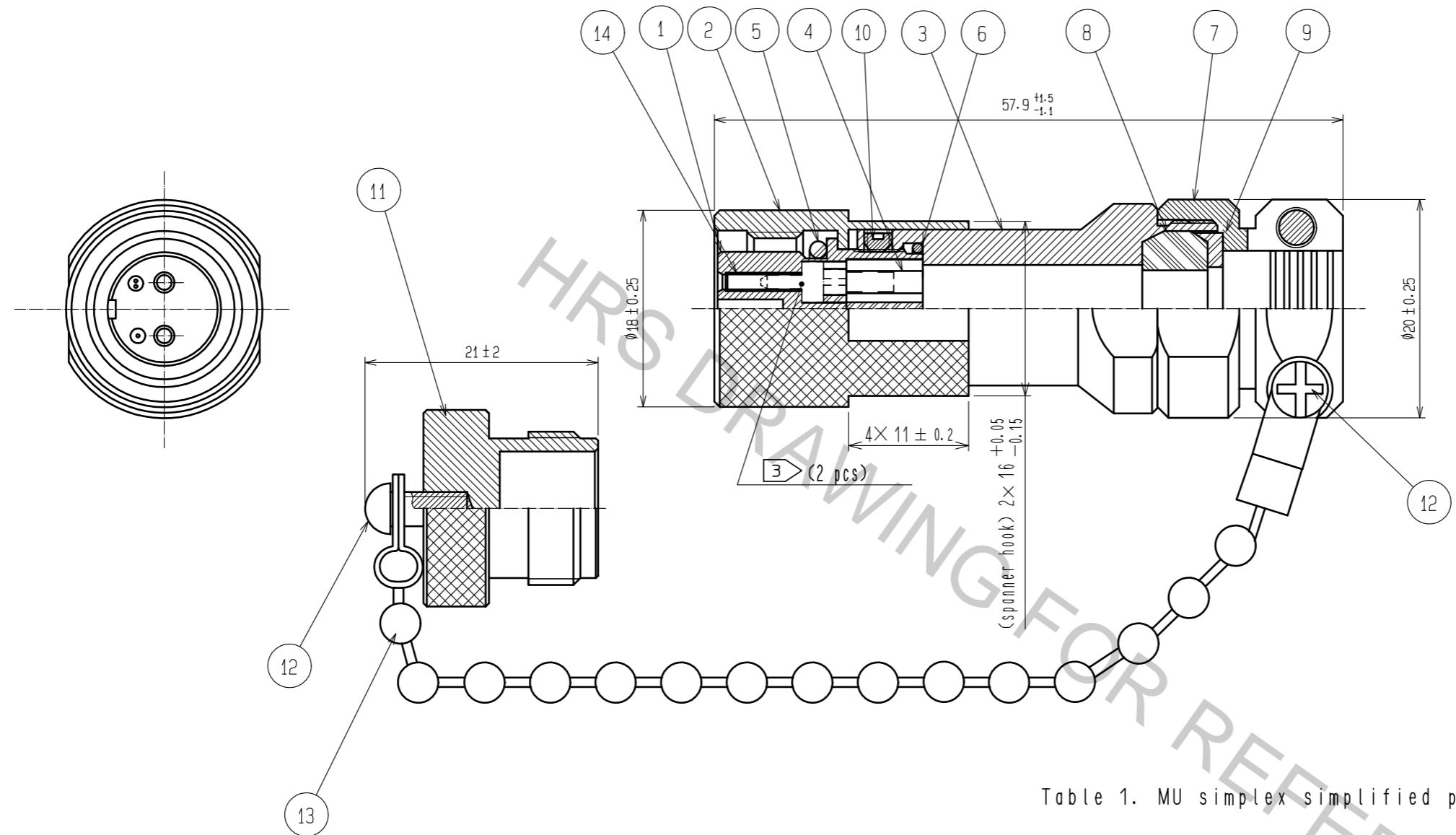



Aug.1.2018 Copyright 2018 HIROSE ELECTRIC CO., LTD. All Rights Reserved.
In case that the application demands a high level of reliability, such as automotive,
please contact a company representative for further information.



- NOTE 1. The procedure of cable assemblies would be confirm to the ETAD-K0189.
2. When this plug is mated with a MF10S receptacle, the clamp torque of the part No. ② should be 1.5 to 3 N·m. Following MF10-T1 can be used as simple substitution of a torque wrench.

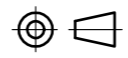
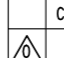

EXCLUSIVE PLASTIC SPANNER	PART NO.	CODE NO.
	MF10-T1	CL709-0205-8

③ The ferrule parts are not contained. Please use the 'MU simplex simplified plug' chosen from the Table 1 according to the outer diameter of the optical fiber.

Table 1. MU simplex simplified plug (without hood) ③

Part No.	HRS CL No.	Ferrele Inner dia.
HMUA-FK-A125(C01)	CL710-0099-2-01	$\phi 0.125^{+0.001}_0$
HMUA-FK-A1255(C01)	CL710-0107-9-01	$\phi 0.1255^{+0.001}_0$
HMUA-FK-A126(C01)	CL710-0100-0-01	$\phi 0.126^{+0.001}_0$

NO.	MATERIAL	FINISH . REMARKS	NO.	MATERIAL	FINISH . REMARKS
7	BRASS	CHROME PLATING	14	ZIRCONIA	
6	SYNTHETIC RUBBER		13	STAINLESS STEEL	
5	SYNTHETIC RUBBER		12	STAINLESS STEEL	NYELOCK
4	SYNTHETIC RESIN		11	ALUMINIUM ALLOY	ANODIC OXIDE COATING
3	ALUMINIUM ALLOY	ANODIC OXIDE COATING	10	STAINLESS STEEL	
2	BRASS	CHROME PLATING	9	SYNTHETIC RESIN	
1	ZINC DIECAST	CHROME PLATING	8	SYNTHETIC RUBBER	

UNITS mm		SCALE 2 : 1	COUNT 	DESCRIPTION OF REVISIONS	DESIGNED	CHECKED	DATE
 HIROSE ELECTRIC CO., LTD.				APPROVED : MT. SHIBUTANI 18.03.16 CHECKED : FS. YOSHIDA 18.03.16 DESIGNED : SI. MATSUMOTO 18.03.15 DRAWN : SR. TOYOKAWA 18.03.15	DRAWING NO. EDC-175688-31-00 PART NO. MF10S-WP7C01-0200(31) CODE NO. CL709-0203-2-31		