

# FMEN-230A

Mar. 2008

High Voltage Schottky Barrier Rectifier

## General Description

FMEN-230A is a High Voltage (100V) Schottky Barrier Diode, and has achieved low leakage current and low VF by selecting the best barrier metal.

## Applications

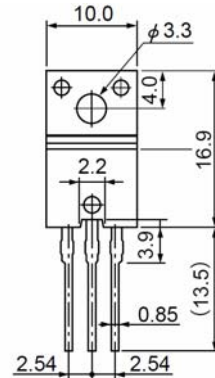
- DC-DC converters
- AC adapter
- High frequency rectification circuit

## Features

- High Voltage 100V guarantee
- Steady operation is possible even at the high temperature by the low leakage current.
- Super-high speed & low noise switching.
- Low forward voltage drop.

## Package

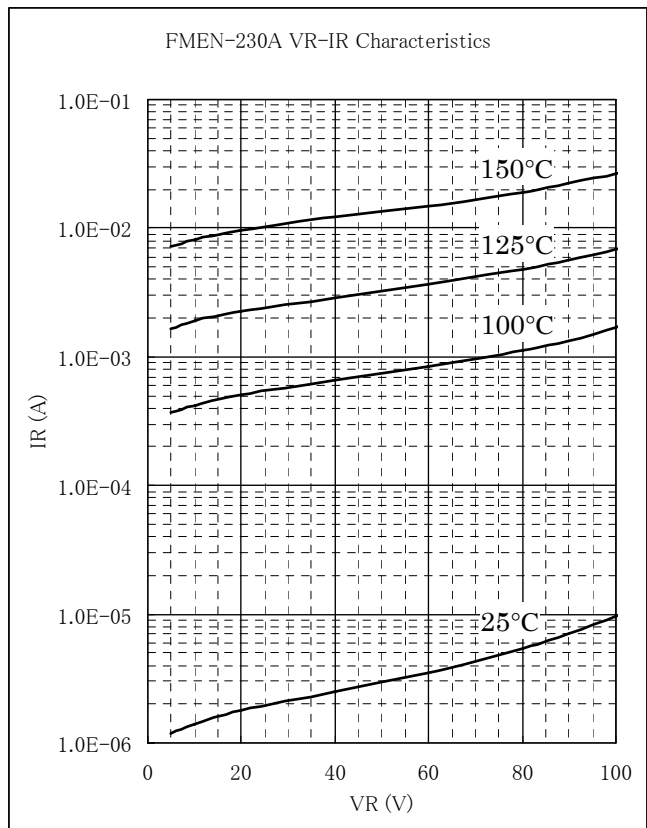
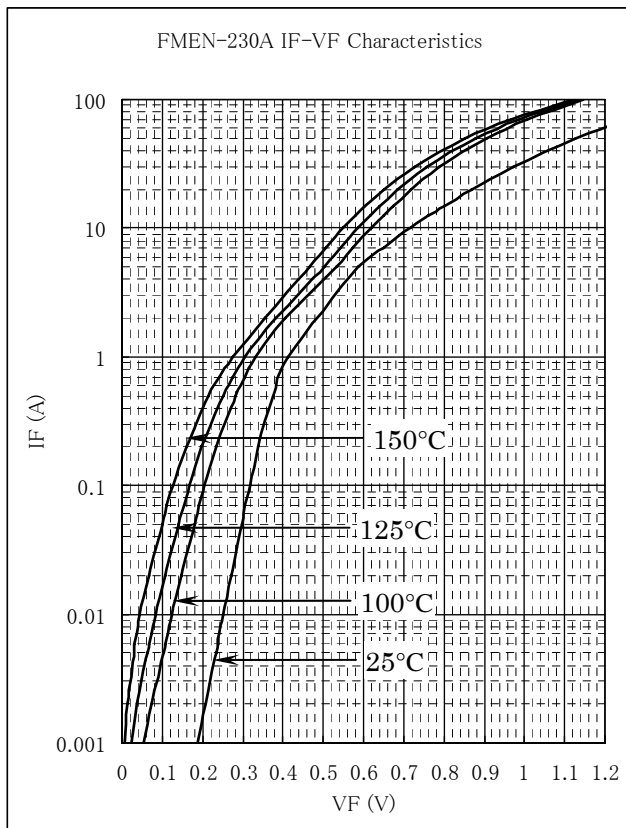
TO220F(3Pin)



## Key Specifications

Symbol	Unit	Rating	Conditions
$V_{RM}$	V	100	
$V_F$	V	0.85	$I_F=15A$
$I_{F(AV)}$	A	30	

## Typical Characteristics



The information included herein is believed to be accurate and reliable. However, SANKEN ELECTRIC CO., LTD assumes no responsibility for its use ; nor for any infringements of patents or other rights of third parties that may result from its use.

# FMEN-230A

Mar. 2008

High Voltage Schottky Barrier Rectifier

**★ Absolute maximum ratings**

No.	Parameter	Symbol	Unit	Rating	Conditions
1	Transient Peak Reverse Voltage	$V_{RSM}$	V	100	
2	Peak Reverse Voltage	$V_{RM}$	V	100	
3	Average Forward Current	$I_{F(AV)}$	A	30	
4	Peak Surge Forward Current	$I_{FSM}$	A	150	Half sinewave, one shot
5	$I^2t$ Limiting Value	$I^2t$	$A^2s$	112.5	1msec<t<10msec
6	Junction Temperature	$T_j$	°C	-40 to +150	
7	Storage Temperature	$T_{stg}$	°C	-40 to +150	

No.1, 2, 4&5 show ratings per one chip.

**★ Electrical characteristics (Ta=25°C, unless otherwise specified)**

No.	Parameter	Symbol	Unit	Rating	Conditions
1	Forward Voltage Drop	$V_F$	V	0.85 max.	$I_F=15A$
2	Reverse Leakage Current	$I_R$	uA	300 max.	$V_R=V_{RM}$
3	Reverse Leakage Current Under High Temperature	$H \cdot I_R$	mA	150 max.	$V_R=V_{RM}, T_j=150^\circ C$
4	Thermal Resistance	$R_{th(j-c)}$	°C/W	4.0 max.	Between Junction and case

No.1, 2&3 show characteristics per one chip.

The information included herein is believed to be accurate and reliable. However, SANKEN ELECTRIC CO., LTD assumes no responsibility for its use ; nor for any infringements of patents or other rights of third parties that may result from its use.

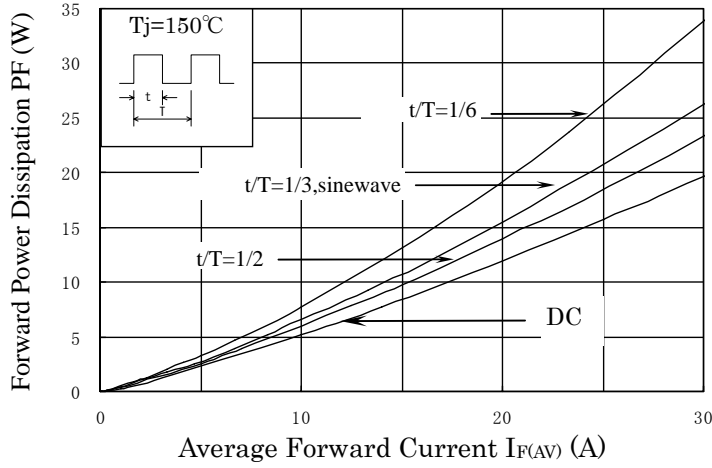
**FMEN-230A**

High Voltage Schottky Barrier Rectifier

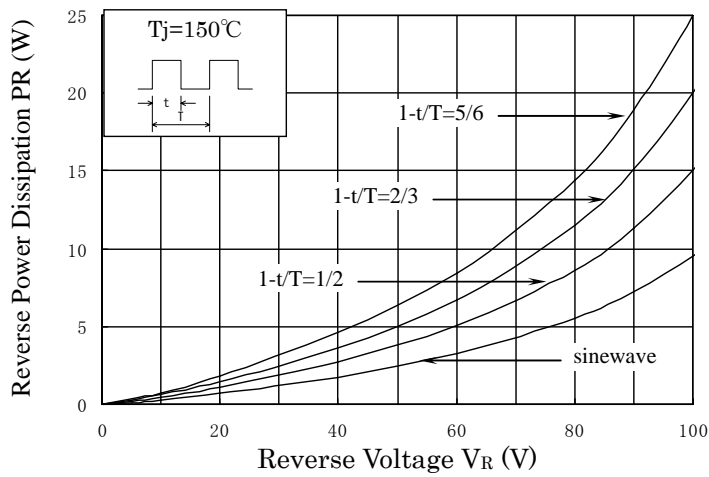
Mar. 2008

★ **Characteristics**

**Forward Power Dissipation**

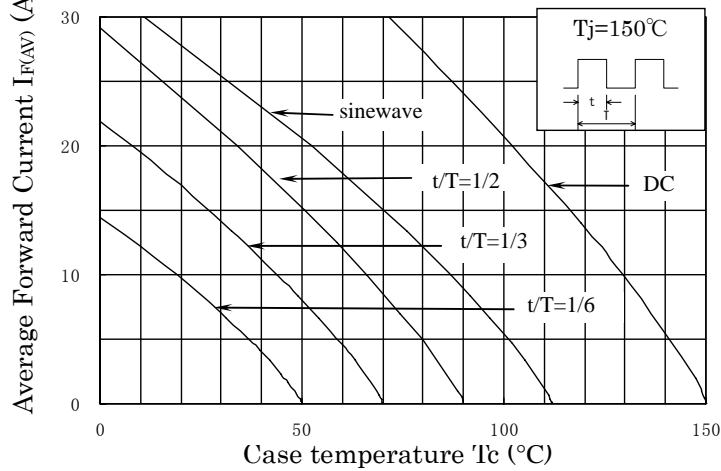


**Reverse Power Dissipation**



**Current Derating**

$V_R=150\text{V}$

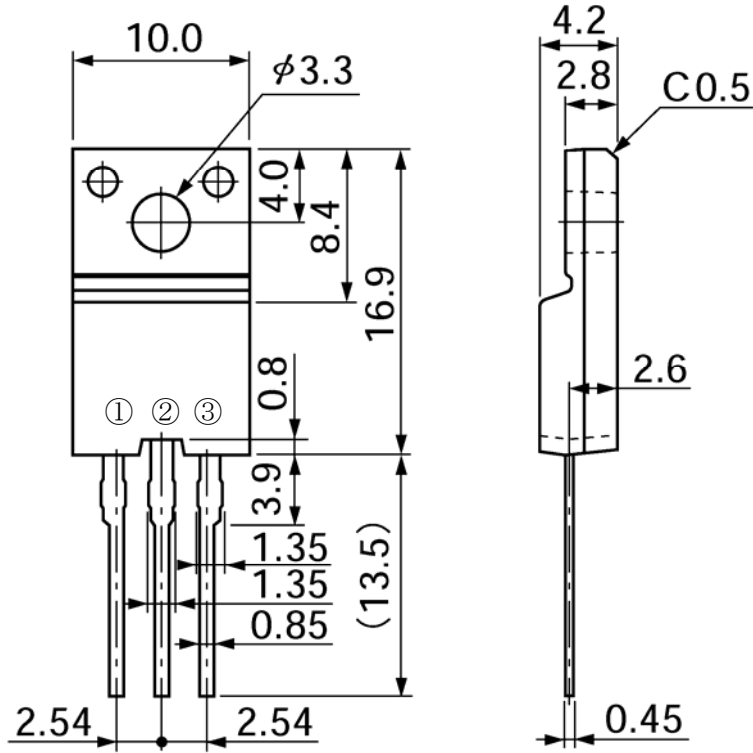


**FMEN-230A**

Mar. 2008

High Voltage Schottky Barrier Rectifier

★ Outline drawings, mm



tolerance:  $\pm 0.2$

★ Connection Diagram

