



A

Pushbutton

# 8700 Series Overtravel Pushbutton Switches



### Features/Benefits

- **Extended pre-travel or over-travel**
- **Heavy-duty brass plunger**
- **Long electrical life – 100K cycles**
- **RoHS compliant**

### Typical Applications

- **Telecommunications**
- **High end Instrumentation**
- **Medical & test equipment**
- **Detection**

### Specifications

CONTACT RATING: Q contact material: 1 AMP @ 120 V AC or 28 V DC. See page A-76 for additional ratings.

ELECTRICAL LIFE: 100,000 actuations at full load.

CONTACT RESISTANCE: Below 30 mΩ typ. Initial @ 2-4 V DC, 100 mA.

INSULATION RESISTANCE: 10<sup>3</sup>Ω min.

DIELECTRIC STRENGTH: 1,000 Vrms min. @ sea level.

OPERATING TEMPERATURE: -30°C to 65°C.

**NOTE:** Any models supplied with Q, or B contact material are RoHS compliant.

**NOTE:** Specifications and materials listed above are for switches with standard options. For information on specific and custom switches, consult Customer Service Center.

### Materials

CASE: Diallyl phthalate (DAP) (UL 94V-0).

PLUNGER:

8731 – .390" brass, nickel plated.

8732 – .390" PBT polyester, black.

BUSHING: brass, nickel plated.

CONTACTS: Q contact material: Coin silver, silver plated. See page A-76 for additional contact materials.

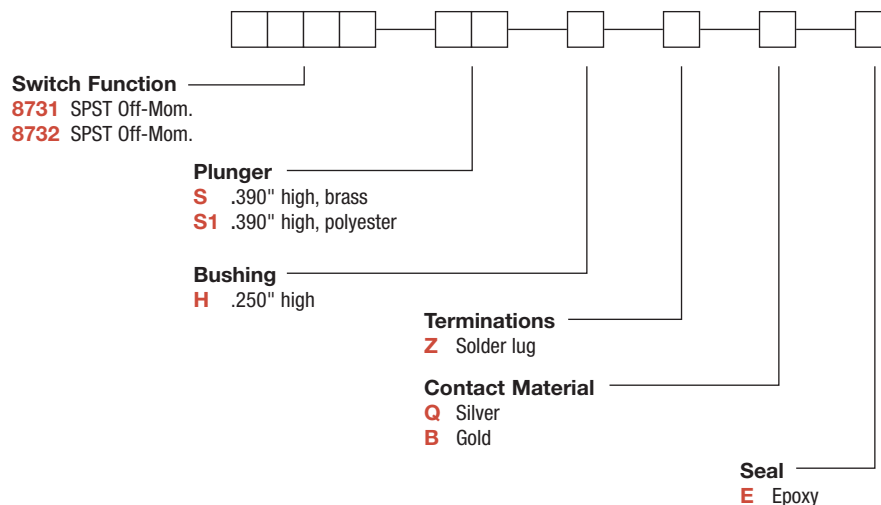
TERMINALS: Q contact material: Copper alloy, silver plated. See page A-76 for additional contact materials.

TERMINAL SEAL: Epoxy.

HARDWARE: Nut: Brass, nickel plated; lockwasher: Steel, bright nickel plate. One mounting nut & lockwasher supplied with all switches.

### Build-A-Switch

To order, simply select desired option from each category and place in the appropriate box. Available options are shown and described on pages A-75 and A-76. For additional options not shown in catalog, consult Customer Service Center. All models have epoxy terminal seal and are compatible with all "bottom-wash" PCB cleaning methods.



Dimensions are shown: Inches (mm)  
Specifications and dimensions subject to change

# 8700 Series Overtravel Pushbutton Switches



A

Pushbutton

## SWITCH FUNCTION

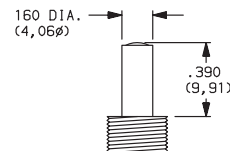
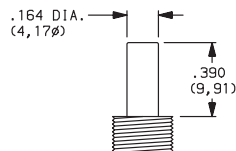
NO. POLES	MODEL NO.	SWITCH FUNCTION		TOTAL TRAVEL	ACTUATION FORCE	SCHEMATIC
		POS. 1	POS. 2			
SP	<b>8731</b>	OFF	MOM.	.390 (9,91) TYP. with overtravel .311 TYP.	4.7 oz TYP.	N.O. with overtravel SPST
<b>SPST</b> <p>Part number shown: 8731SHZQE</p>						
SP	<b>8732</b>	OFF	MOM.	.390 (9,91) TYP. with overtravel .350 TYP.	2.2 oz TYP.	N.O. with overtravel SPST
<b>SPST</b> <p>Part number shown: 8732S1HZQE</p>						

MOM. = Momentary

## PLUNGER

**S** .390" HIGH, BRASS

**S1** .390" HIGH, PBT POLYESTER

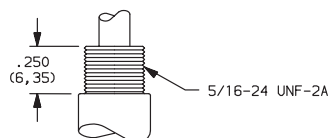


Available with 8731 model only.

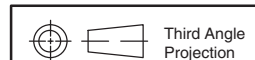
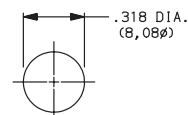
Available with 8732 model only.

## BUSHING

**H** .250" HIGH



### PANEL MOUNTING



Dimensions are shown: Inches (mm)  
Specifications and dimensions subject to change



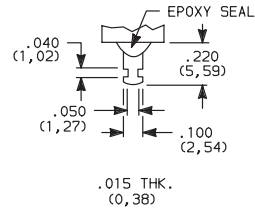
# 8700 Series Overtravel Pushbutton Switches

A

Pushbutton

## TERMINATIONS

**Z** SOLDER LUG



## CONTACT MATERIAL

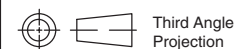
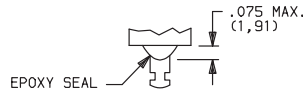
OPTION CODE	RoHS COMPLIANT *	RoHS COMPATIBLE *	CONTACT MATERIAL	TERMINAL PLATING	RATINGS	
					POWER	
<b>Q</b>	YES	YES	SILVER	SILVER		1 AMP @ 125 V AC OR 28 V DC.
<b>B</b>	YES	YES	GOLD	GOLD	LOW LEVEL/DRY CIRCUIT	0.4 VA MAX. @ 20 V AC OR DC MAX.

\* Note: See Technical Data section of this catalog for RoHS compliant and compatible definition and specifications.

**NOTE:** Any models supplied with Q, or B contact material are RoHS compliant.

## SEAL

**E** EPOXY SEAL



Dimensions are shown: Inches (mm)  
Specifications and dimensions subject to change