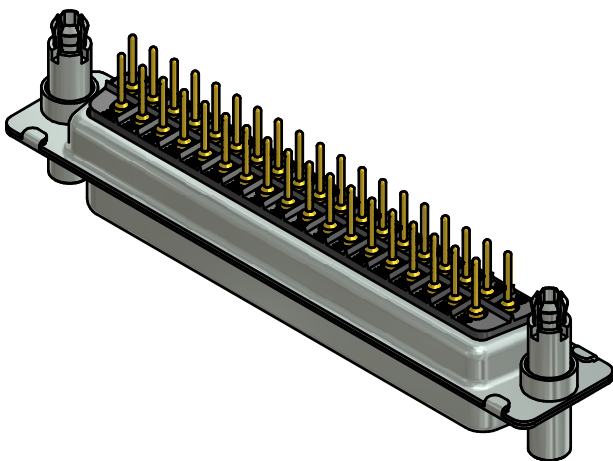
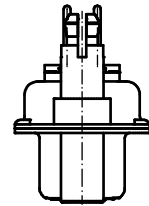
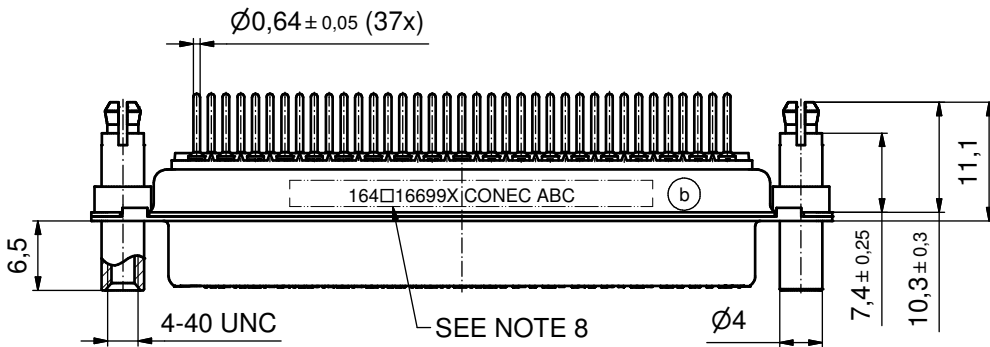
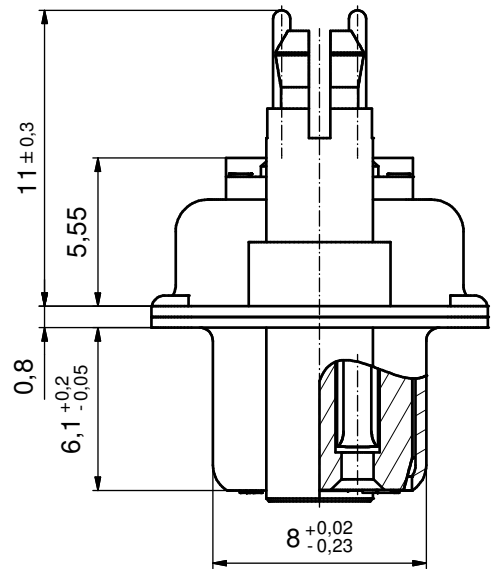
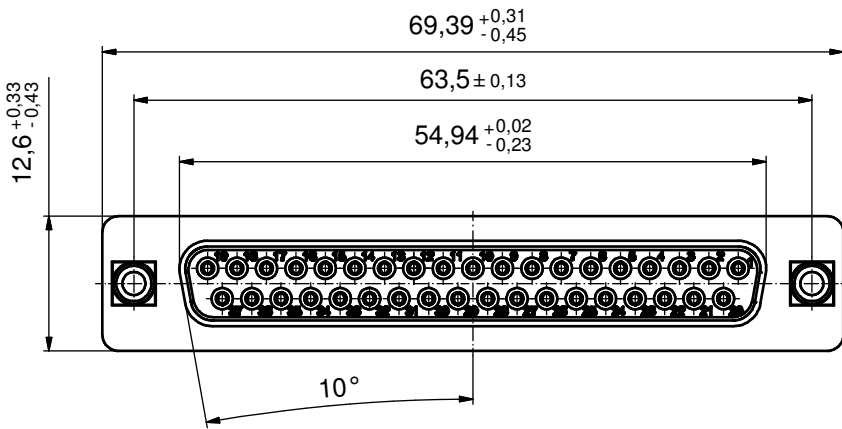


(5:1)



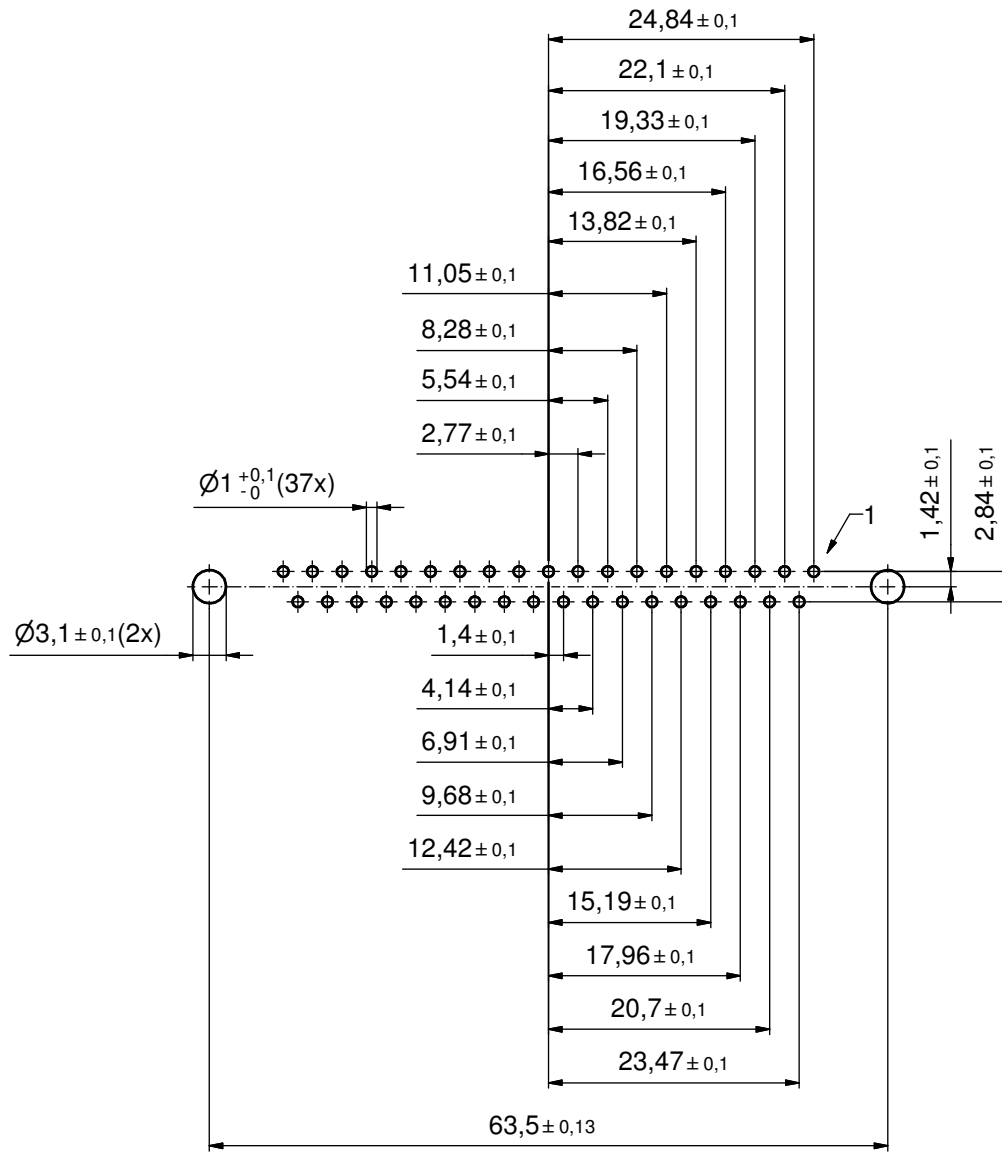
NOTES:

1. METALSHELLS: STEEL; min. 315µin TIN over 40-80µin NICKEL
2. INSULATORS: PBT GF UL 94 V-0; BLACK
3. SIGNAL CONTACTS: COPPER ALLOY; PLATING (SEE PART NO.):
  - PLEASE ADD A for GOLD FLASH over NICKEL (PREFERRED TYPE)
  - PLEASE ADD B for 20µin HARD GOLD over min. 50µin NICKEL
  - PLEASE ADD C for 30µin HARD GOLD over min. 50µin NICKEL
4. THREADED LOCK AND SPACER CLIPS: COPPER ALLOY; min. 200µin TIN over 80µin NICKEL  
PCB-HOLES:  $\phi 3,1 \pm 0,1$ ; PCB THICKNESS 1,6mm
5. COLLARS: COPPER ALLOY; min. 200µin TIN over 80µin NICKEL
6. P.C.B. HOLE DRILLINGS ON SHEET 2
7. MAXIMUM TORQUE VALUE FOR THREAD: 6 in.LB
8. CONNECTOR IS PART MARKED: 164□16699X CONEC ABC (see note 3)

Directive 2002/95/EC RoHS compliant

THIS DRAWING MAY NOT BE COPIED OR REPRODUCED IN ANY WAY, AND MAY NOT BE PASSED ON TO A THIRD PARTY WITHOUT WRITTEN PERMISSION. OWNERSHIP AND COPYRIGHT OF CONEC GmbH DO NOT ALTER CAD DRAWING BY HAND				tolerance	dim. in mm	scale:	2:1 (5:1)
				date		name	material:
				drawn	04.07.13	Henneboel	title:
				appd.	08.07.13	Fischer	
				norm			
			d-old	16K1IKWA/16K2IKWA		dwg no:	<b>D-SUB FEMALE</b> 37pos. SOLDER PIN STRAIGHT with threaded lock and spacer clip
3 x b	A4824	04.07.2013	K.H.				
a	Original					(b) 16K1A3272	DIN-A3 sh: 1/2
rev.	description	date	name			part no:	164□16699X (see note 3)

P.C.B. HOLE DRILLINGS  
(P.C.B. TOP SIDE)



THIS DRAWING MAY NOT BE COPIED OR REPRODUCED IN ANY WAY, AND MAY NOT BE PASSED ON TO A THIRD PARTY WITHOUT WRITTEN PERMISSION. OWNERSHIP AND COPYRIGHT OF CONEC GmbH DO NOT ALTER CAD DRAWING BY HAND				tolerance		scale: 2:1
				date	name	material: see sheet 1
				drawn	04.07.13	Henneboel
				appd.	04.07.13	Fischer
				norm		
			d-old	(b) 16K11IUA		
1 x b	Ä4824	04.07.2013	K.H.	title: <b>P.C.B. HOLE DRILLINGS</b> D-SUB FEMALE 37pos. solder pin straight with threaded lock and spacer clip		
a	Original					
rev.	description	date	name			dwg no: <b>16K1A3272</b> DIN-A3 sh: 2/2
				part no: see sheet 1		