

ASSEMBLY INSTRUCTIONS.

DIMENSIONS ARE IN INCHES		TOLERANCES ARE:		TITLE:	DWG NO:
ONE PLACE DECIMALS: ±	THREE PLACE DECIMALS: ±	ANGLES	±	PIN GRID ARRAY	MXAX-XXX-XXXX-XX-X
TWO PLACE DECIMALS: ±	FOUR PLACE DECIMALS: ±				SHEET 2 OF 8

SOCKETS

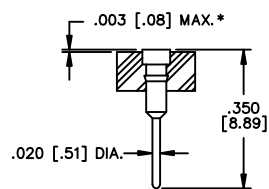


FIG. "A"

MXAS-XXX-ZAXX-XX

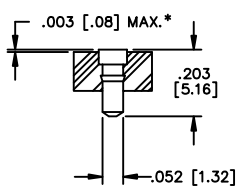


FIG. "B"

MXAS-XXX-ZBXX-XX

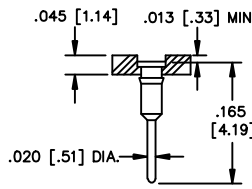


FIG. "C"

MHAS-XXX-ZCXX-XX

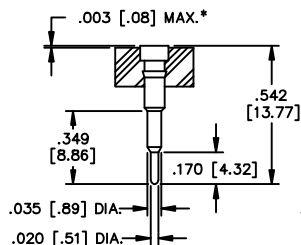


FIG. "D"

MXAS-XXX-ZEXX-XX

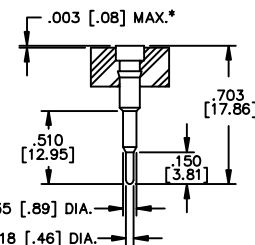


FIG. "E"

MXAS-XXX-ZHXX-XX

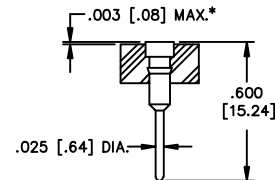


FIG. "F"

MXAS-XXX-JXX-XX

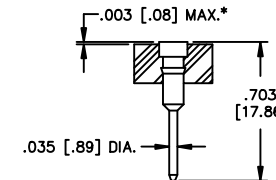


FIG. "G"

MXAS-XXX-KXX-XX

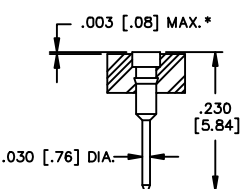


FIG. "H"

MXAS-XXX-ZLXX-XX

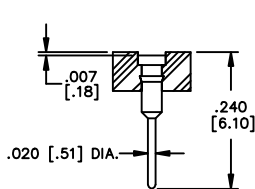


FIG. "J"

MHAS-XXX-ZMXX-XX

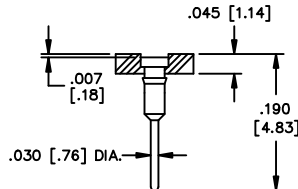


FIG. "K"

MHAS-XXX-ZNXX-XX

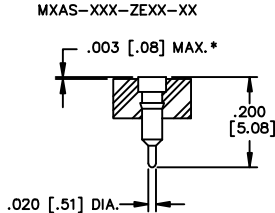


FIG. "L"

MXAS-XXX-ZPXX-XX

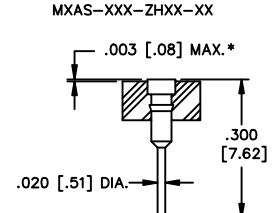


FIG. "M"

MXAS-XXX-ZSXX-XX

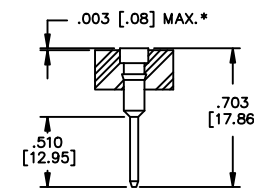


FIG. "O"

MXAS-XXX-ZWXX-XX

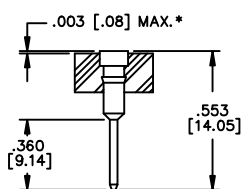


FIG. "P"

MXAS-XXX-ZWXX-XX-2

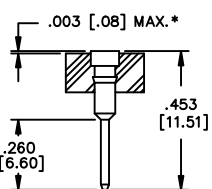


FIG. "Q"

MXAS-XXX-ZWXX-XX-3

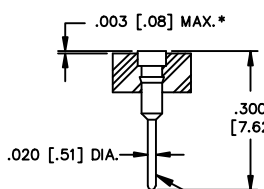


FIG. "R"

MXAS-XXX-ZUXX-XX

NOTES:

1. ALL DIMENSIONS ARE FOR REFERENCE ONLY. FOR ACTUAL SPECIFICATIONS SEE INDIVIDUAL COMPONENT PRINTS.
2. * : FOR THE "MHAS" BODY STYLE THIS DIMENSION SHALL BE .010 [.25] MAX.
3. ** : FOR THE "MHAS" BODY STYLE THIS DIMENSION SHALL BE .003 [.08] MIN.
4. ALL BODIES SHOWN ARE .100 [2.54] (REF) THICK UNLESS OTHERWISE SHOWN. SEE PGAS-XX-XXX COMPONENT PRINT FOR ACTUAL DIMENSIONS.

PROPRIETARY NOTE
THIS DOCUMENT CONTAINS INFORMATION CONFIDENTIAL AND PROPRIETARY TO SAMTEC INC. AND SHALL NOT BE REPRODUCED OR TRANSMITTED TO OTHER DOCUMENTS OR DISCLOSED TO OTHERS OR USED FOR ANY PURPOSE OTHER THAN THAT FOR WHICH IT WAS OBTAINED WITHOUT THE EXPRESSED WRITTEN CONSENT OF SAMTEC INC.

TABLE 2
SOCKET SPECIFICATION
(SEE SHEET 2 FOR FIG.)

LEAD STYLE	SOCKET	FIG.
-ZA	EZ-6P1-XX	A
-ZB	EZ-1S1-XX	B
-ZC **	EZ-8P1-XX	C
-ZE *	EZ-2P3-XX	D
-ZH *	EZ-2P2-XX	E
-J	SC-1P3-XX	F
-K	SC-2P1-XX	G
-ZL	EZ-3P1-XX	H
-ZM	EZ-4P1-XX	J
-ZN **	EZ-5P1-XX	K
-ZS	EZ-1P1-XX	M
-ZW *	EZ-1W1-XX-1	O
-ZW-2 *	EZ-1W1-XX-2	P
-ZW-3 *	EZ-1W1-XX-3	Q
-ZU	UZ-1P1-XX	R

*: NOT RELEASED FOR MHAS.
**: MHAS ONLY.

PACKAGE AS SHOWN

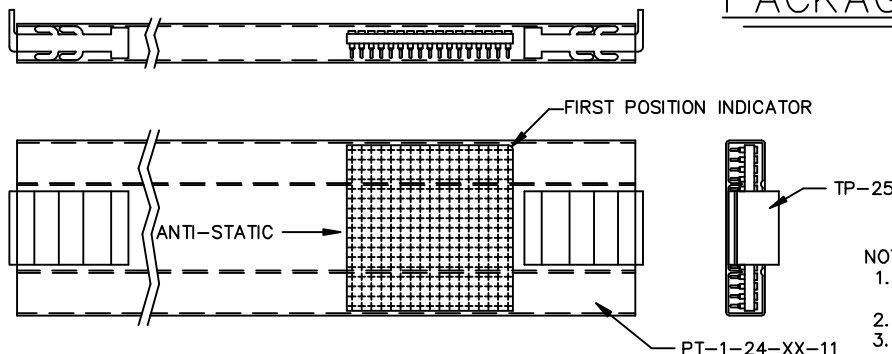


TABLE 4

LEAD STYLE	GRID	TUBE	PLUG
-ZS, -ZU	08 THRU 17	PT-1-24-01-11	TP-25
-ZS, -ZU	18 THRU 20	PT-1-24-02-11	TP-25
-ZL	13	PT-1-24-05-51	TP-25
-ZL	15	PT-1-24-05-28	TP-04

NOTE:

1. LEAD STYLES -ZS AND -ZL TO BE PACKAGED IN TUBES. SEE TABLE 4 FOR TUBE & PLUG USED.
2. USE 2 PLUGS PER TUBE.
3. FOR MPAS, MVAS, AND CPAS ONLY.

samtec

520 PARK EAST BLVD. NEW ALBANY, INDIANA 47150
PHONE (812) 944-6733 P.O. BOX 1147
CODE 55322

MADE BY:	ENGINEER APPROVAL:	MXAX-XXX-XXXX-XX-X
CHECKED BY:		SHEET 2 OF 8