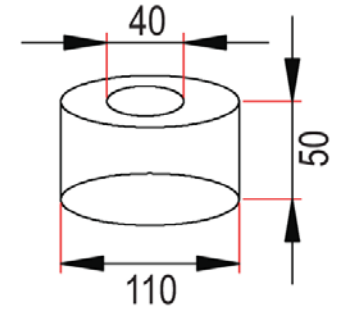
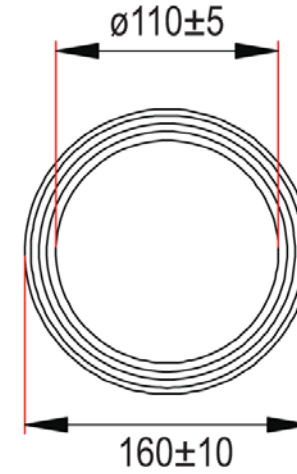


Sec: A - A



Note:
 Mold Size.

100Ft/R. PE Film

Unit: MM



Scale	1:1							Name
TOLERANCE						Drawn	12.19.11	Chappell
X.X	±0.40					Approved		
X.XX	±0.25							
X.XXX	±0.15							
Angle	±3°							
Modification			Date	Name				

Item No.	AT-K-26-4-S/100	
Title	Modular Straight cable - Raw, 4 Contact, 26AWG, Silver, 100Ft.	
Drawing No.		rev00
Replace		Sheet