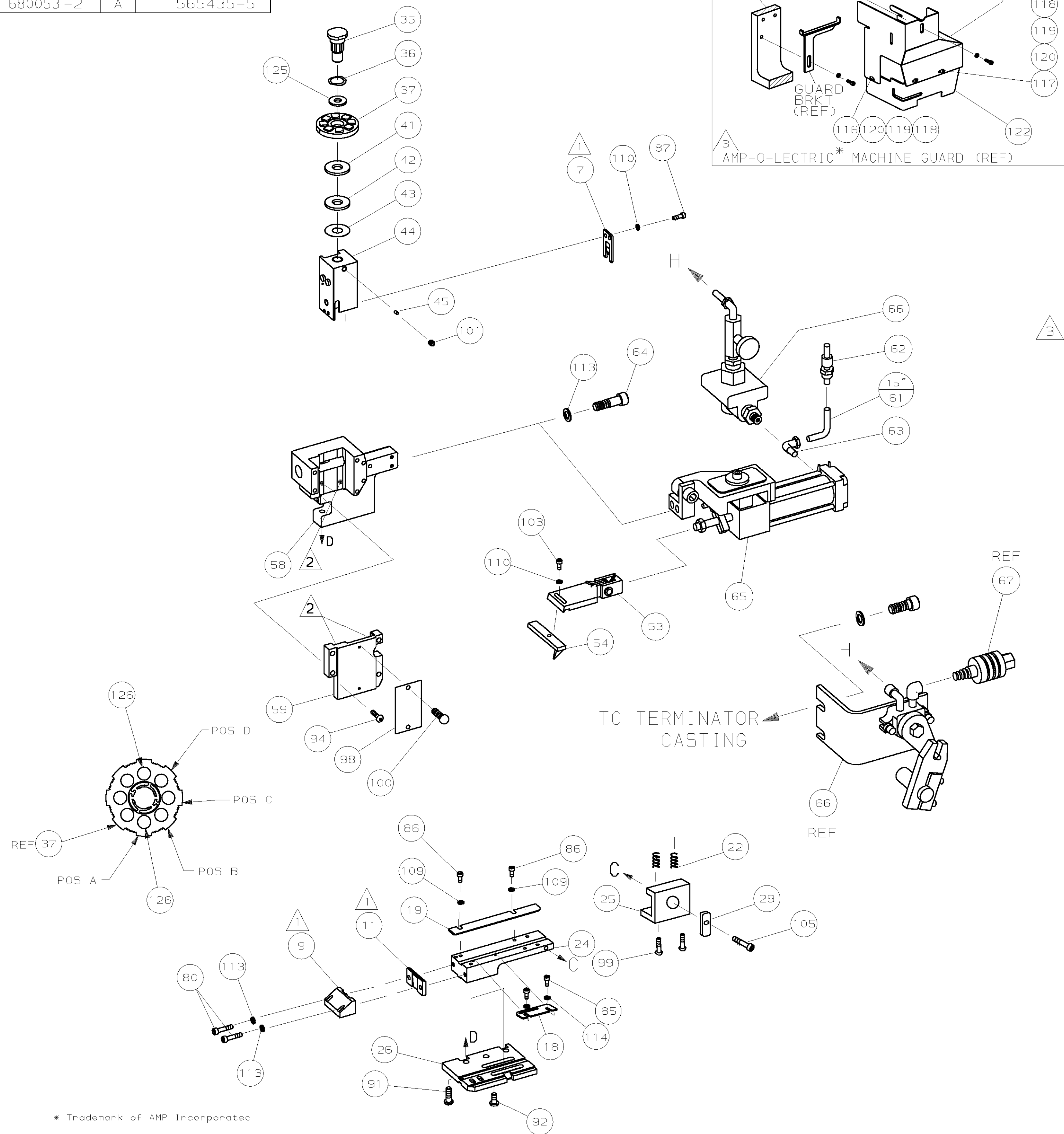


PART NUMBER	REV	FIRST USED
680053-1	0	854400-1
680053-2	A	565435-5

PRELIMINARY



- 1 RECOMMENDED SPARE PARTS.
- 2 GREASE LIGHTLY.
- 3 GUARD MUST BE IN PLACE WHEN OPERATING APPLICATOR IN AMP-0-LECTRIC MACHINE.
- 4 SEE DRAWING FOR COMPONENTS
- 5 THIS APPLICATOR DOES NOT CRIMP THE TERMINAL

TERMINAL NAME:		CRIMPING DATA		
INSERT, CONTACT, PCB, TYPE P		PAD LTR	CRIMP HEIGHT	WIRE SIZE
414610		A	NOT	USED
		B	NOT	USED
		C	NOT	USED
		D	NOT	USED
CRIMP	SIZE	TYPE	RANGE	
WIRE	-	-	-	
INSUL	-	-	-	
FEED	APPL INST	SET UP GAGE	LAYOUT	
.395	408-8039	NONE	L1536	
TERM APPL SPEC		WIRE STRIP LENGTH		
-		-		

QTY	REV	U/M	DWG SIZE	PART NO	DESCRIPTION	ITEM NO
2	2	-	C	354778-1	PIN, WIRE DISC (.2500)A	126
1	1	-	A	986950-1	WASHER, FLAT PRECISION	125
1	-	-	C	122395-1	GUARD	122
1	-	-	D	457133-1	SHROUD	121
2	-	-	A	26928-2	SPACER, SPLIT #8x.38LG	120
3	-	-	A	21018-6	NUT, HEX 8-32	119
3	-	-	A	1-21899-3	WASHER, PLAIN FLAT #8	118
2	-	-	A	7-22468-3	SCR, BDGHD MACH 8-32 X .75	117
1	-	-	A	7-22468-0	SCR, BDGHD MACH 8-32 X .38	116
2	2	-	A	21024-2	WASHER, LOCK (NO.4) ST GU PL	115
4	4	-	A	21024-5	WASHER, LOCK (NO.10) SHEAR PL	113
3	3	-	A	21024-4	WASHER, LOCK (NO.8) FEED	110
2	2	-	A	21024-3	WASHER, LOCK (NO.6) ST GU PL	109
1	1	-	A	22353-8	SCR, SHLD (#.187x.25) DRAG LEVER	105
1	1	-	A	2-21000-5	SCR, SHC (8-32x.25) FEED HOLDER	103
1	1	-	A	21009-2	SCR, SKT SET (1/4-20x.25) RAM	101
2	2	-	A	21017-2	SCR, DRIVE (#2x.19) ID PLATE	100
2	2	-	A	3-21002-0	SCR, BHC (10-32x.88) DRAG	99
1	1	-	B	461264-1	PLATE, IDENTIFICATION	98
4	4	-	A	2-21002-9	SCR, BHC (10-32x.75) CAP	94
4	4	-	A	3-21002-3	SCR, BHC (1/4-20x.50) ST GD PL	92
3	3	-	A	2-22733-8	SCR, BHC (1/4-20x.62) H5G	91
1	1	-	A	2-21000-6	SCR, SHC (8-32x.38) SLUG BLADE	87
2	2	-	A	2-21000-0	SCR, SHC (6-32x.50) STRIP GUIDE	86
2	2	-	A	1-21000-3	SCR, SHC (4-40x.25) F ST GU	85
2	2	-	A	3-21000-8	SCR, SKT CAP (10-32x.88) SH PL	80

QTY	REV	U/M	DWG SIZE	PART NO	DESCRIPTION	ITEM NO
1	1	-	C	458268-1	CAP, RAM	59
1	1	-	D	458267-1	HOUSING	58
1	1	-	B	679904-1	PAWL, FEED	54
1	1	-	B	461062-1	HOLDER, FEED FINGER	53
1	1	-	A	24042-2	VALVE, SHUT OFF	67
1	1	-	B	692655-5	VALVE ASSY	66
1	1	-	B	460277-1	AIR FEED ASSY	65
2	2	-	A	3-21000-9	SCR, SHC (10-32x1.00) AIR FD ASSY	64
-	1	-	A	22294-6	ELBOW, TUBING 1/8NPT - 1/4 T	63
-	1	-	A	23238-1	QUICK DISCONNECT	62
-	15.00	IN	A	27319-4	TUBING, POLY-FLO 1/4 DIA	61
1	1	-	C	458268-1	CAP, RAM	59
1	1	-	D	458267-1	HOUSING	58
1	1	-	A	690191-1	PLUG, NYLON	45
1	1	-	C	458266-1	RAM	44
1	1	-	A	690125-1	WASHER, LAMINATED	43
1	1	-	A	690124-1	WASHER, RAM	42
1	1	-	A	690223-2	SPACER, INSULATION DISC	41
1	1	-	D	354777-1	WIRE DISC, PLASTIC	37
1	1	-	A	22480-5	WASHER, SPRING	36
1	1	-	B	690212-1	POST, RAM	35
1	1	-	B	240793-1	LEVER, DRAG RELEASE	29
1	1	-	D	458263-1	PLATE, BASE	26
1	1	-	B	240792-1	DRAG, TERMINAL	25
1	1	-	B	122342-1	PLATE, STRIP GUIDE	24
2	2	-	A	1-22284-0	SPRING, DRAG	22
1	1	-	B	679768-2	GUIDE, STRIP (REAR)	19
1	1	-	C	690438-1	GUIDE, STRIP (FRONT)	18
1	1	-	C	122315-1	PLATE, REAR SHEAR	11
1	1	-	C	122314-1	PLATE, FRONT SHEAR	9
1	1	-	C	354791-1	BLADE, SLUG	7

QTY	REV	U/M	DWG SIZE	PART NO	DESCRIPTION	ITEM NO
-2	-1	-	-	-	-	-

QTY	REV	U/M	DWG SIZE	PART NO	DESCRIPTION	ITEM NO
-2	-1	-	-	-	-	-

LOC A
D15T
66

DIMENSIONS IN INCHES. DO NOT SCALE PRINT. TOLERANCES UNLESS OTHERWISE SPECIFIED:
 2 PLC DEC ±.25
 3 PLC DEC ±.
 4 PLC DEC ±.
 ANGLES ±.
 SURF TEXTURE: ✓
 REMOVE BURRS, BREAK SHARP EDGES R.015 MAX

MATL - HT TR - FIN -

DR 11/4/93 APP 11/4/93 JC BAKER BA WOLFE
 CHK 11/4/93 REL 11/30/93 C. ERISMAN B. MORGAN

AMP AMP Incorporated Harrisburg, PA 17105-3608

NAME: END FEED HDM APPLICATOR MACHINE REF: MINI APPL

SCALE: 1 OF 1 SHEET REV: A1

CASE CODE: 00779 CUSTOMER AND ASSEMBLY DRAWING

THIS DRAWING IS A CONTROLLED DOCUMENT.

THIS DRAWING IS UNCLASSIFIED DATE 05/19/99 BY AMP INCORPORATED. ALL RIGHTS RESERVED.