

## Panel mounting frames - VS-PPC-F1-SCRJ-MNNA-1C-F - 1405235


Please be informed that the data shown in this PDF Document is generated from our Online Catalog. Please find the complete data in the user's documentation. Our General Terms of Use for Downloads are valid (<http://download.phoenixcontact.com>)



SCRJ panel mounting frame, IP67, for push/pull interlocking, metal, with the Freenet system, for round mounting cutout, with seal and SCRJ coupling



### Key commercial data

Packing unit	1 PCE
GTIN	 4 046356 334785
Custom tariff number	85389099
Country of origin	GERMANY

### Technical data

#### Mechanical characteristics

Locking type	Push Pull
Insertion/withdrawal cycles	= 100
Color	silver
Ambient temperature (operation)	-40 °C ... 70 °C

#### Ambient conditions

Ambient temperature (operation)	-40 °C ... 70 °C
Degree of protection	IP65/67

#### Material data

Housing material	Zinc die-cast
Housing surface material	Nickel-plated
Material	Metal

#### Electrical characteristics

# Panel mounting frames - VS-PPC-F1-SCRJ-MNNA-1C-F - 1405235

## Technical data

### Electrical characteristics

Pollution degree	2
------------------	---

## Classifications

### ETIM

ETIM 3.0	EC002310
ETIM 4.0	EC002310
ETIM 5.0	EC002310

### UNSPSC

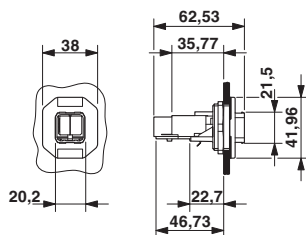
UNSPSC 11	31261501
UNSPSC 12.01	31261501
UNSPSC 13.2	31261501
UNSPSC 6.01	31261501
UNSPSC 7.0901	31261501

### eCl@ss

eCl@ss 4.0	272607xx
eCl@ss 4.1	27260701
eCl@ss 5.0	27260701
eCl@ss 5.1	27260701
eCl@ss 6.0	27261207
eCl@ss 7.0	27440210
eCl@ss 8.0	27440210

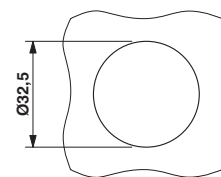
## Drawings

Dimensioned drawing



Push-Pull SCRJ panel mounting frame

Dimensioned drawing



Panel cutout

## Panel mounting frames - VS-PPC-F1-SCRJ-MNNA-1C-F - 1405235

Explosion drawing

