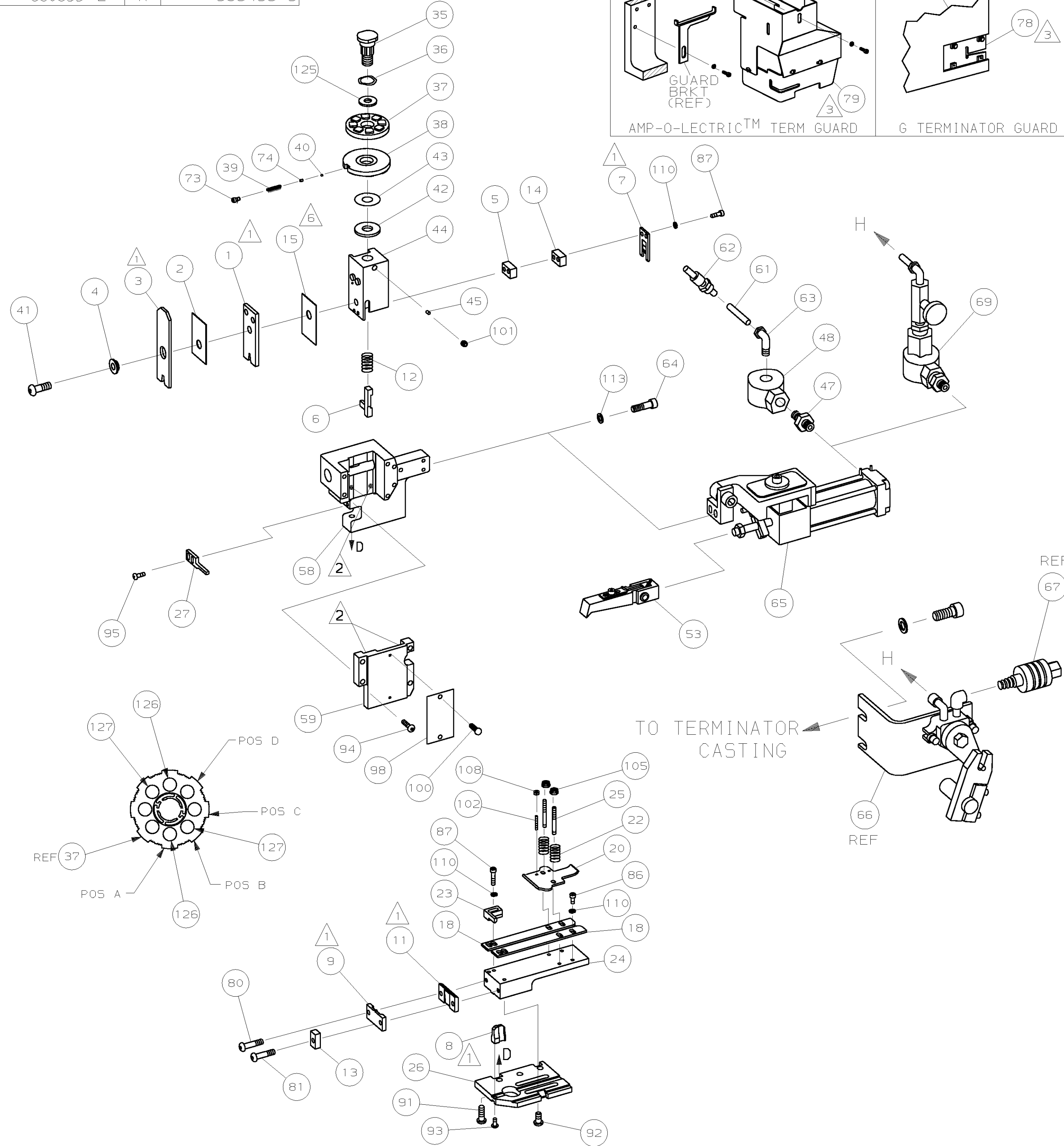


PART NUMBER	REV	FIRST USED
680633-1	A	122500-1
680633-2	A	565435-5



- ① RECOMMENDED SPARE PARTS.
- ② GREASE LIGHTLY.
- ③ GUARD MUST BE IN PLACE WHEN OPERATING APPLICATOR IN A BENCH MACHINE.
- ④ SEE DRAWING FOR COMPONENTS
- ⑤ ITEM 78 USED WITH G TERMINATOR ONLY.
- ⑥ INSTALL ITEM 15 WITH SHORT END UP.

TERMINAL NAME: TERMINAL, RING					
AMP P/N 286721		MFG P/N 100917-E01 (CAT #2DB8758)		<b>CRIMP DATA</b> (NON-AMP TERMINAL-CUST SPEC)	
PAD LTR			CRIMP HEIGHT	WIRE SIZE	
A	.164 ±.002 [4.17 ±0.05mm]			10	
B	.149 ±.002 [3.78 ±0.05mm]			12	
C	NOT			USED	
D	NOT			USED	
CRIMP			SIZE	TYPE	RANGE
WIRE			.210 [5.33mm]	F	12-10
INSUL			.280 [7.11mm]	F	.130-.209
WIRE STRIP LENGTH	TERM APPL	SPEC	FEED	APPL INSTRUCTION	SET UP GAGE
.281-.312	NONE		1.220	408-8039	458638-1
					LAYOUT L2075

						129
						128
2	2	-	C	5-354778-4	PIN, WIRE DISC (.2765)B	127
2	2	-	C	3-354778-1	PIN, WIRE DISC (.2650)A	126
1	1	-	A	986950-1	WASHER, FLAT PRECISION	125
1	1	-	A	217238-1	GENERAL INSTRUCTION PACKAGE	124
1	1	-	-	4088039	EF APPL INST 408-8039	123
						122
						121
						120
						119
						118
						117
						116
						115
						114
2	2	-	A	21024-5	WASHER, LOCK (#10) AIR ASSY	113
						112
						111
7	7	-	A	21024-4	WASHER, LOCK (NO.8) SHEAR BL	110
						109
2	2	-	A	21018-4	NUT, HEX (4-40) DRAG	108
						107
						106
2	2	-	A	21022-2	NUT, HEX 5L (8-32) DRAG STUD	105
						104
						103
2	2	-	A	2-21006-6	SCR, SKT SET (4-40x.62) DRAG	102
1	1	-	A	21009-2	SCR, SKT SET (1/4-20x.25) RAM	101
2	2	-	A	21017-2	SCR, DRIVE (#2x.19) ID PLATE	100
1	1	-	B	461264-1	PLATE, IDENTIFICATION	98
						97
						96
2	2	-	A	2-21002-2	SCR, BHC (8-32x.50) STRIPPER	95
4	4	-	A	2-21002-9	SCR, BHC (10-32x.75) CAP	94
1	1	-	A	22733-8	SCR, BHC (8-32x.38 LW) ANVIL	93
4	4	-	A	3-21002-3	SCR, BHC (1/4-20x.50) ST 6D PL	92
3	3	-	A	2-22733-8	SCR, BHC (1/4-20x.62) H5G	91
						90
						89
						88
4	4	-	A	2-21000-9	SCR, SHC (8-32x.75) SLUG BLADE	87
3	3	-	A	2-21000-6	SCR, SHC (8-32x.38) STRIP GUIDE	86
						85
						84
						83
						82
1	1	-	A	3-21002-1	SCR, BHC (10-32x1.00) SHEAR PL	81
1	1	-	A	3-21002-0	SCR, BHC (10-32x.88) SHEAR PL	80
1	-	-	A	455750-7	GUARD ASSY	79
-	REF	-	A	679532-1	INSERT, GUARD	78
						77
						76
						75
1	1	-	A	690603-1	SPRING, ASSIST	74
1	1	-	A	23030-1	SCR, SKT CAP (6-32x.25) CP DSC	73
						72
						71

QTY	REQD	PER	ASSY	DWG	SIZE	PART NO	DESCRIPTION	ITEM NO
-2	-1	U/M						

QTY	REQD	PER	ASSY	DWG	SIZE	PART NO	DESCRIPTION	ITEM NO
-1	-	U/M						
-2	-	U/M						

QTY	REQD	PER	ASSY	DWG	SIZE	PART NO	DESCRIPTION	ITEM NO
								70
△	1	-	-	C		692655-5	AIR FEED VALVE ASSY	69
								68
REF	-	-	-	A		24042-2	VALVE, SHUT OFF	67
△	REF	-	-	C		692655-6	AIR FEED VALVE ASSY	66
△	1	1	-	B		2-460277-0	AIR FEED ASSY (2 INCH)	65
2	2	-	-	A		3-21000-9	SCR, SHC (10-32x1.00) AIR ASSY	64
-	1	-	-	A		980285-2	ELBOW, SWIVEL 1/8 NPT - 1/4 T	63
-	1	-	-	A		23238-1	QUICK DISCONNECT	62
-	12.00	IN	A			27319-4	TUBING, POLY-FLO Ø.25	61
								60
1	1	-	-	C		454220-1	CAP, RAM	59
1	1	-	-	D		453736-1	HOUSING	58
								57
								56
								55
								54
△	1	1	-	B		460680-1	FEED FINGER ASSY	53
								52
								51
								50
								49
-	1	-	-	A		22374-7	VALVE, QUICK EXHAUST	48
-	1	-	-	A		22304-1	NIPPLE, HEX 1/8 NPT	47
								46
1	1	-	-	A		690191-1	PLUG, NYLON	45
1	1	-	-	C		455674-1	RAM	44
1	1	-	-	A		690125-1	WASHER, LAMINATED	43
1	1	-	-	A		690124-5	WASHER, RAM	42
1	1	-	-	A		7-21002-9	BOLT, CRIMPER (5/16-24x1.00)	41
1	1	-	-	A		23241-6	BALL, STEEL	40
1	1	-	-	A		690170-1	SPRING, COMPRESSION	39
1	1	-	-	C		690142-1	DISC, INSULATION	38
1	1	-	-	D		354777-1	WIRE DISC, PLASTIC	37
1	1	-	-	A		22480-5	WASHER, SPRING	36
1	1	-	-	B		690212-1	POST, RAM	35
								34
								33
								32
								31
								30
								29
								28
1	1	-	-	A		240639-3	STRIPPER	27
1	1	-	-	D		455676-1	PLATE, BASE	26
2	2	-	-	A		22354-8	DRAG, STUD	25
1	1	-	-	B		455678-1	PLATE, STRIP GUIDE	24
1	1	-	-	C		240825-5	PLATE, STRIP HOLD DOWN	23
2	2	-	-	A		4-22281-1	SPRING, DRAG	22
								21
1	1	-	-	A		454177-1	DRAG, STOCK	20
								19
2	2	-	-	C		454204-4	GUIDE, STRIP (FRONT)	18
								17
								16
1	1	-	-	B		455888-4	SPACER, CRIMPER	15
1	1	-	-	C		240641-3	SPACER, SLUG BLADE	14
1	1	-	-	C		1-690481-2	SPACER, HOLD DOWN	13
1	1	-	-	A		23846-1	SPRING, HOLD DOWN	12
1	1	-	-	B		240644-1	PLATE, REAR SHEAR	11
								10
△	1	1	-	B		690482-7	PLATE, FRONT SHEAR	9
1	1	-	-	D		5-461295-9	ANVIL	8
1	1	-	-	B		2-690474-0	BLADE, SLUG	7
1	1	-	-	D		3-455892-4	HOLD DOWN, TERMINAL	6
1	1	-	-	C		2-240641-5	SPACER, SLUG BLADE	5
1	1	-	-	B		238009-7	SPACER, BLOCK CRIMPER	4
1	1	-	-	C		5-456134-6	CRIMPER, INSULATION	3
1	1	-	-	B		1-455888-0	SPACER, CRIMPER	2
1	1	-	-	C		6-458141-1	CRIMPER, WIRE	1

QTY	REQD	PER	ASSY	DWG	SIZE	PART NO	DESCRIPTION	ITEM NO
-2	-1	U/M						

REVISION OF EACH ASSY NO (WHEN BLANK, USE DWG REVISION)

DIMENSIONS IN INCHES. DO NOT SCALE PRINT.			MATL	HT TR	FIN
TOLERANCES UNLESS OTHERWISE SPECIFIED:					
1	PLC DEC ± .25				
2	PLC DEC ± .125				
3	PLC DEC ± .0625				
4	PLC DEC ± .03125				
ANGLES ± -					
SURF TEXTURE: ✓					
REMOVE BURRS, BREAK SHARP EDGES R.015 MAX					
DR 11 JUN 98		APP 11 JUN 98		MACHINE REF	
R.O.WILSON		T.ELBIN		MINI APPL	
CHK 11 JUN 98		REL -		NAME	
				END FEED HDM APPLICATOR	
SCALE -		DWG NO 680633		SHEET 1 OF 1	
				REV A1	