

# BUSBAR CONNECTIVITY

## QUICK REFERENCE GUIDE

### THINGS TO CONSIDER WHEN CHOOSING BUSBAR PRODUCTS

**Application:** Properties like dimensions, shape, isolation, plating, base material, and use of connector should be considered when choosing a busbar product.

**Current and Voltage:** Does the connector require power only, or a combination of power and signal? How much current is required in the application? Keep in mind that busbar products performance is usually measured in amperes (or amps). The voltage is also highly important as it defines the spacing between the contacts and is related to safety requirements.

**Hot-Pluggability:** Will the application be mated while under electrical load? If so, a hot-pluggable connector is required. Many of the products in this guide have been approved for use in hot-plug applications.

### TYPICAL POWER CONNECTOR APPLICATIONS

- Busbar based power distribution
- Power racks
- Rack mounted switching power supplies
- Core network energy systems
- Cellular base stations
- PSU power distribution
- Servers, storage & network routers
- Industrial
- Computer
- Modular power supply
- Alternative (green) energy systems)
- Power inverters

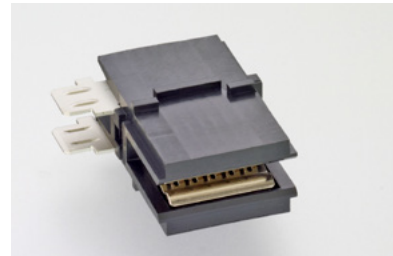
## CROWN CLIP Jr. Connectors



**Screw Mount**

**Reference Part Number\***  
1982995-1 | 1982995-2

- Mates directly to a power bus bar
- Provides a space efficient interconnection in solder or screw mount configurations
- Low insertion/extraction forces
- Ideal for power supply/distribution applications
- Bus Bar misalignment:  $\pm .75$  mm



**Solder Tail**

**Reference Part Numbers\***  
2178410-1 | 2178411-1 | 1551953-1

- Blind mate
- Hot pluggable
- Copper busbar, plated nickel or suitable alternative
- Current = 170A
- Anti Over Stress Feature
- Mating Bus Bar Thickness:  $3.0 \pm 0.1$  mm

## CROWN CLIP Sr. Connectors



**CROWN CLIP Sockets**

**Reference Part Number\***  
1643906-1



**CROWN CLIP II Sockets**

**Reference Part Number\***  
1643903-1



**Dual CROWN CLIP Sockets**

**Reference Part Number\***  
1926671-1

### CROWN CLIP Sockets Features:

- Compact, high-current, blind-mate design. Supports true hot-plug, complying with safety regulatory requirements for current interruption under load.
- Utilizes the well-known ELCON CROWN BAND contact technology.
- Mates to a solid blade (CROWN CLIP) or laminated bus bar tabs for feed and return currents (CROWN CLIP II and Dual CROWN CLIP).
- CROWN CLIP is a single pole, float mount socket provides up to 6 degrees of float. CROWN CLIP II is a dual pole, float-mount socket offering  $\pm 1.0$ mm of bus bar misalignment. Dual CROWN CLIP is a dual pole, feed-through socket allowing insertion of mating blade from both top or bottom of socket.
- Mating bus bar blades to be .125" (3.18mm) or .118" (3.00mm) thick. Insertion length .650" (16.50mm) minimum, 1.00" (25.40mm) maximum

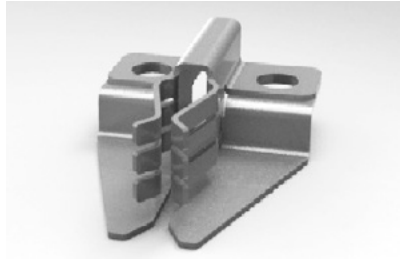
|                        | Part Number  | Length (mm [in1]) | Width (mm [in1]) | Comment      | Rated Current | Current Interruption       |
|------------------------|--|-------------------|------------------|--------------|---------------|----------------------------|
| <b>CROWN CLIP</b>      | 1643906-1  | 36.45<br>[1.435]  | 25.40<br>[1.000] | Single Pole  | 300A          | 100A at 48V<br>200A at 42V |
| <b>CROWN CLIP II</b>   | 1643903-1  | 36.45<br>[1.435]  | 25.40<br>[1.000] | Dual Pole    | 300A          | 100A at 48V<br>200A at 42V |
| <b>Dual CROWN CLIP</b> | 1926671-1  | 35.56<br>[1.400]  | 25.40<br>[1.000] | Dual Pole    | 350A          | 100A at 60V<br>200A at 5V  |
| <b>CROWN CLIP Jr.</b>  | 1982995-1<br>1982995-2<br>2178410-1<br>2178411-1<br>2178531-1<br>1551953-1 | 35.56<br>[1.400]  | 26.67<br>[1.050] | Feed Through | 170A          | -                          |

\*Part numbers listed are examples of some available samples, please visit website for additional and mating part numbers

## Features

- Board-to-Busbar, Wire-to-Busbar, Board-to-Busbar
- Silver plated Copper alloy
- Mate with .125" or .062" thick plated bus bar providing a separable connection that eases assembly, inspection, and troubleshooting
- Ideal for computer, industrial control, modular power supply or other applications that demand low millivolt drop and reliable separation. Commonly used in rack-mounted equipment with bus bar architecture.
- Blind mateable (misalignment up to + .060" [1.52mm] for both series)

## 125 Series



**Reference Part Number\***  
104502-1



**Reference Part Number\***  
104501-1



**Reference Part Number\***  
213647-1

- Contact Rated Current = 500 A
- 100 mating cycles minimum
- 1" [25.4mm] minimum width bus bar

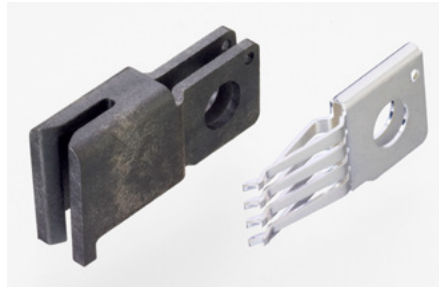
| Series  | Part Number | Dimensions            |                       |                       |
|---|-------------|-----------------------|-----------------------|-----------------------|
|   |             | "A" (Width)           | "B" (Height)          | "C" (Length)          |
| 125 Series Fits Busbar <b>.125</b> [3.18] Thick | 104502-1*   | <b>2.290</b><br>58.17 | <b>1.141</b><br>28.99 | <b>3.200</b><br>81.28 |
|   | 104501-1*   | <b>.850</b><br>21.59  | <b>1.122</b><br>28.5  | <b>3.294</b><br>83.67 |
|   | 213647-1    | <b>1.250</b><br>31.75 | <b>1.141</b><br>28.99 | <b>1.993</b><br>50.61 |
|   | 2212011-1   | <b>1.25</b><br>31.8   | <b>1.01</b><br>25.8   | <b>2.00</b><br>50.9   |

\*Busbar or Cable Power Feed

## 062 Series



**Reference Part Number\***  
104729-1



**Reference Part Number\***  
104742-2

| Series  | Part Number | Dimensions            |                      |                       |
|---|-------------|-----------------------|----------------------|-----------------------|
|   |             | "A" (Width)           | "B" (Height)         | "C" (Length)          |
| 062 Series Fits Busbar <b>.062</b> [1.57] Thick | 104729-1    | <b>1.360</b><br>34.54 | <b>.705</b><br>17.91 | <b>1.342</b><br>34.09 |
|   | 104742-2    | <b>.356</b><br>9.04   | <b>.705</b><br>17.91 | <b>1.342</b><br>34.09 |

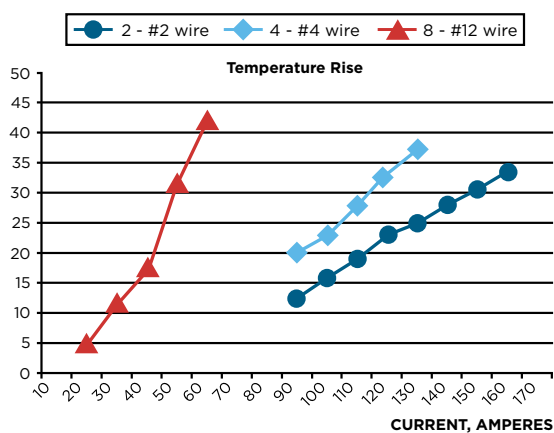
- Contact Rated Current = 250 A
- 50 cycle minimum
- ½" [12.7mm] minimum width busbar

\*Part numbers listed are examples of some available samples, please visit website for additional and mating part numbers



## Features

- Replacement for threaded studs
- No loose nuts = no fretting/heat rise
- Quick Connect/Disconnect
- Safety Locking feature
- Currents from 50A to 250A
- Wire sizes from 2.5 to 95mm<sup>2</sup>
- Color coding available
- Straight and right angle versions



## Pin Contacts - Swage Type

| Type        | Type  | Size | Current Rating | Part No   |
|-------------|-------|------|----------------|-----------|
| Pin Contact | Swage | #8   | 50A            | 6648221-1 |
| Pin Contact | Swage | #4   | 120A           | 6648222-1 |
| Pin Contact | Swage | #2   | 150A           | 6648223-1 |
| Pin Contact | Swage | 12mm | 250A           | 1857523-3 |

## Socket Connectors - Right Angle

| Part No   | Size | Wire Size         | Current Rating | Color* |
|-----------|------|-------------------|----------------|--------|
| 6648237-1 | #8   | AWG #12           |                | Black  |
| 6648228-1 | #8   | AWG #8            | 50A            | Black  |
| 1766484-1 | #8   | AWG #6            |                | Black  |
| 6648235-1 | #4   | AWG #8            |                | Black  |
| 6648239-1 | #4   | AWG #6            | 110A           | Black  |
| 6648236-1 | #4   | AWG #4            |                | Black  |
| 6648238-1 | #2   | AWG #2            | 150A           | Black  |
| 6648234-1 | #2   | AWG #0            |                | Black  |
| 1857547-1 | 12mm | 95mm <sup>2</sup> | 250A           | Red    |

\*Black, Red and Blue colors available

## Pin Sockets - Screw and Washer Type

| Type        | Type           | Part No   | Size | Current Rating |
|-------------|----------------|-----------|------|----------------|
| Pin Contact | Screw & Washer | 2085957-1 | #4   | 120A           |
| Pin Contact | Screw & Washer | 6648226-1 | #2   | 150A           |

## Insulation Boots

| Part No   | Size  | Color |
|-----------|-------|-------|
| 1651003-1 | #4 #8 | Black |
| 1651003-2 | #4 #8 | Red   |
| 1651003-3 | #4 #8 | Grey  |
| 1651003-4 | #4 #8 | Blue  |
| 1766600-1 | #2    | Black |
| 1766600-2 | #2    | Red   |
| 1766600-3 | #2    | Grey  |
| 1766600-4 | #2    | Blue  |

## Socket Connectors - Straight

| Type                 | Size | Wire Size | Current Rating | Color | Part No   |
|----------------------|------|-----------|----------------|-------|-----------|
| Plastic locking hood | #8   |           |                | Black | 1643279-1 |
| Plastic locking hood | #8   |           |                | Red   | 1643279-2 |
| Plastic locking hood | #8   |           |                | Blue  | 1643279-3 |
| Socket contact       | #8   | #8        | 50A            |       | 6648317-1 |
| Plastic locking hood | #4   |           |                | Black | 1651766-1 |
| Socket contact       | #4   | #4        | 120A           |       | 6648434-1 |

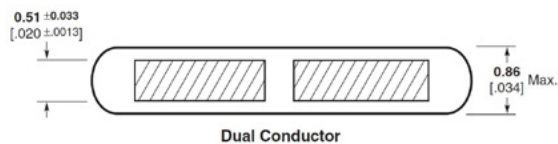
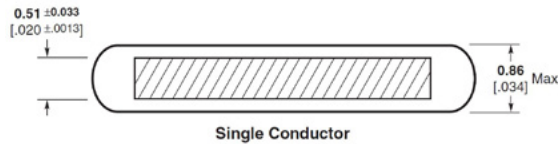
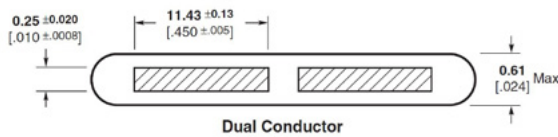
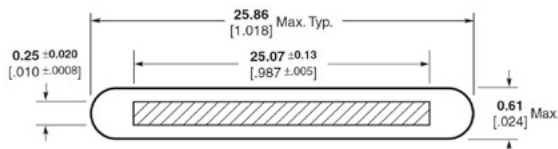
Part numbers listed are examples of some available samples, please visit website for additional and mating part numbers

## Features

- Insulated flat copper cable conductors and associated interface components enable solutions to power distribution challenges through its unmatched packaging flexibility.
- Single and dual conductor cable types with various conductor and insulation thicknesses available. Standard cable types support 80-135 Amps and operating voltages up to 600V.
- Flat power cables offer a number of advantages over both round jacketed power cables or traditional bus bars.
- Variety of interfaces for end of cable or mid-cable terminations enable high application versatility and customization.
- Flat cables can be easily formed and will hold their shape, enabling high packaging flexibility. Cables can be easily routed through confined spaces.
- Fully touch-safe. Less copper compared to round jacketed cable; therefore less weight and lower cost per ampere of rated current.

## Copper Cable Options

| Part Number | Width (mm [in1]) | Thickness (mm [in1]) | Copper Conductor(s) W (inch[mm]) x T (inch [mm]) | Color | Operating Voltage | Max Current (A) |
|-------------|------------------|----------------------|--|-------|-------------------|-----------------|
| 1-765210-7  | 1.018 (25.86)    | 0.024 (0.61)         | 1 x 0.987 (25.07) x 0.01 (0.25)                  | Blue  | 300               | 80              |
| 1-765210-8  | 1.018 (25.86)    | 0.034 (0.86)         | 1 x 0.987 (25.07) x 0.02 (0.51)                  | Blue  | 300               | 110             |
| 1-765210-9  | 1.018 (25.86)    | 0.024 (0.61)         | 2 x 0.45 (11.43) x 0.01 (0.25)                   | Blue  | 300               | 40/40           |
| 2-765210-0  | 1.018 (25.86)    | 0.034 (0.86)         | 2 x 0.45 (11.43) x 0.02 (0.51)                   | Blue  | 300               | 55/55           |
| 2-765210-3  | 0.484 (12.29)    | 0.024 (0.61)         | 1 x 0.45 (11.43) x 0.01 (0.25)                   | Blue  | 300               | 40              |
| 2-765210-4  | 0.484 (12.29)    | 0.034 (0.86)         | 1 x 0.45 (11.43) x 0.02 (0.51)                   | Blue  | 300               | 55              |
| 2-765210-5  | 1.018 (25.86)    | 0.044 (1.12)         | 1 x 0.987 (25.07) x 0.03 (0.76)                  | Red   | 300               | 135             |
| 2-765210-6  | 1.018 (25.86)    | 0.052 (1.32)         | 1 x 0.987 (25.07) x 0.03 (0.76)                  | Red   | 600               | 135             |
| 2-765210-7  | 1.018 (25.86)    | 0.052 (1.32)         | 1 x 0.987 (25.07) x 0.03 (0.76)                  | Blue  | 600               | 135             |
| 2-765210-8  | 0.484 (12.29)    | 0.034 (0.86)         | 1 x 0.45 (11.43) x 0.02 (0.51)                   | Red   | 300               | 55              |
| 2-765210-9  | 1.018 (25.86)    | 0.034 (0.86)         | 2 x 0.45 (11.43) x 0.02 (0.51)                   | Red   | 300               | 55/55           |
| 3-765210-0  | 1.018 (25.86)    | 0.034 (0.86)         | 1 x 0.987 (25.07) x 0.02 (0.51)                  | Red   | 300               | 110             |



| Circular MILS | Approx AWG | Amps |
|---------------|------------|------|
| Per Conductor |            |      |

|        |    |       |
|--------|----|-------|
| 12,566 | 9  | 80    |
| 5,729  | 13 | 40/40 |
| 25,133 | 6  | 110   |
| 11,459 | 10 | 55/55 |

**Cable-to-Cable Connectors**

| Part Number         | Description                     | Tail Type | Tail Length (inch) |
|---------------------|---------------------------------|-----------|--------------------|
| 765191-1            | slim plug                       | N/A       | N/A                |
| 765478-1            | slim receptacle                 | N/A       | N/A                |
| 766569-1            | Cable to Cable Receptacle PM*   | N/A       | N/A                |
| 766569-1 PM needs:  | 765530-1, 765245-1              | N/A       | N/A                |
| 766569-1            | Cable to Cable Receptacle STR** | N/A       | N/A                |
| 766569-1 STR needs: | 765529-1, 765245-1              | N/A       | N/A                |

\*PM = Panel Mount  
 \*\*STR = Squeeze-to-Release



Cable Receptacle



Mid-Cable Termination  
 .250 FASTON Tab Tap



PCB-Mounted Header

**Blindmate PCB-Mounted Headers**

| Part Number | Description         | Tail Type | Tail Length (inch) |
|-------------|---------------------|-----------|--------------------|
| 5765527-1   | 2 Cable Vert Header | Solder    | 0.131              |
| 5765527-2   | 2 Cable Vert Header | Solder    | 0.165              |
| 765608-1    | 2 Cable R/A Header  | Solder    | 0.273              |
| 5765208-1   | 4 Cable Vert header | Solder    | 0.131              |
| 5765208-2   | 4 Cable Vert header | Solder    | 0.165              |
| 5765208-3   | 4 Cable Vert header | Solder    | 0.235              |
| 5765208-4   | 4 Cable Vert header | Solder    | 0.305              |
| 766510-1    | 4 Cable R/A Header  | Solder    | 0.273              |
| 765208-5    | 4 Cable Vert header | Press Fit | 0.144              |

**PCB Mounted Headers**

| Part Number | Description                  | Tail Type | Tail Length (inch) |
|-------------|------------------------------|-----------|--------------------|
| 1-765206-7  | slim vert header             | Solder    | 0.131              |
| 1-765206-8  | slim vert header             | Solder    | 0.165              |
| 1-765206-9  | slim vert header             | Solder    | 0.225              |
| 2-765206-0  | slim vert header with eyelet | Solder    | 0.131              |
| 765271-1    | slim vert header             | Press Fit | 0.144              |
| 765204-5    | slim R/A header              | Solder    | 0.124              |
| 765204-6    | slim R/A header              | Solder    | 0.165              |

**Mid-Cable Terminations**

| Part Number | Description         | Tail Type | Tail Length (inch) |
|-------------|---------------------|-----------|--------------------|
| 765277-1    | Tap                 | N/A       | N/A                |
| 765311-1    | Side Tap, R/A       | N/A       | N/A                |
| 765275-1    | Side Tap, Jogged    | N/A       | N/A                |
| 765276-1    | .250 FASTON Tab Tap | N/A       | N/A                |

**Blindmate Cable-Mounted Receptacles**

| Part Number     | Description                  | Tail Type | Tail Length (inch) |
|-----------------|------------------------------|-----------|--------------------|
| 765528-1        | 2 Cable housing              | N/A       | N/A                |
| 765528-1 needs: | 765529-1, 765209-1, 768209-2 | N/A       | N/A                |
| 765247-1        | 4 Cable housing              | N/A       | N/A                |
| 765247-1 needs: | 765248-1, 765209-1, 768209-2 | N/A       | N/A                |

**Terminal Block Interface**

| Part Number | Description                | Centerline [inch,(mm)] | Hole Size [inch,(mm)]       |
|-------------|----------------------------|------------------------|-----------------------------|
| 765228-1    | Full-Width Cover           |                        |                             |
| 765216-1    | Termination Assembly, .562 | 0.562 (14.27)          | 0.171 x 0.250 (4.34 x 6.35) |
| 765225-1    | Termination Assembly, .688 | 0.688 (17.48)          | 0.270 x 0.296 (6.86 x 7.52) |
| 765229-1    | Half-Width Cover           |                        |                             |
| 765216-1    | Termination Assembly, .562 | 0.562 (14.27)          | 0.171 x 0.250 (4.34 x 6.35) |
| 765225-1    | Termination Assembly, .688 | 0.688 (17.48)          | 0.270 x 0.296 (6.86 x 7.52) |

**Stud Interface**

| Part Number | Description                   | Stud Size [inch,(mm)] | Hole Size [inch,(mm)] |
|-------------|-------------------------------|-----------------------|-----------------------|
| 765228-1    | Cover                         |                       |                       |
| 765226-1    | Termination Assembly for 1/4  | 0.250 (6.35)          | 0.266 (6.76)          |
| 765226-2    | Termination Assembly for 5/16 | 0.312 (7.92)          | 0.328 (8.33)          |



# Associated Content

Open Compute Project (OCP) Bus Bar Clip and Cable Assemblies QRG ([Doc # 1-1773867-8](#))

2-Piece Power Connectors QRG ([Doc # 4-17773458-1](#))

TE also has a broad offering of **cable-mounted** bus bar connectivity solutions; contact TE for more details.

## For More Information

### TE Technical Support Center

|                   |                    |
|-------------------|--------------------|
| USA:              | 1.800.522.6752     |
| Canada:           | 1.905.475.6222     |
| Mexico:           | 52.0.55.1106.0800  |
| Latin/S. America: | 54.0.11.4733.2200  |
| Germany:          | 49.0.6251.133.1999 |
| UK:               | 44.0.800.267666    |
| France:           | 33.0.1.3420.8686   |
| Netherlands:      | 31.0.73.6246.999   |
| China:            | 86.0.400.820.6015  |

[te.com/products/busbar](http://te.com/products/busbar)

© 2017 TE Connectivity Ltd. family of companies. All Rights Reserved.

AMP, AMPOWER, CROWN CLIP, ELCON, RAPID LOCK, TE Connectivity, TE, TE Connectivity (logo) and Every Connection Counts are trademarks of the TE Connectivity Ltd. family of companies.

Other logos, product and company names mentioned herein may be trademarks of their respective owners.

1-1773701-9 DND 04/2017

While TE has made every reasonable effort to ensure the accuracy of the information in this brochure, TE does not guarantee that it is error-free, nor does TE make any other representation, warranty or guarantee that the information is accurate, correct, reliable or current reserves the right to make any adjustments to the information contained herein at any time without notice. TE expressly disclaims all implied warranties regarding the information contained herein, including, but not limited to, any implied warranties of merchantability or fitness for a particular purpose. The dimensions in this catalog are for reference purposes only and are subject to change without notice. Specifications are subject to change without notice. Consult TE for the latest dimensions and design specifications.