

## BT740 Development Kit

Quick Start Guide

v1.2

This Quick Start Guide applies to the following part numbers:

- DVK-BT740-SA
- DVK-BT740-SC

### INTRODUCTION

There are two hardware variants (on board antenna and uFL connector for external) of the BT740 Enhanced Data Module (BTv 2.1 specification) which interface with a host via an UART and one of two logical protocols.

There are two logical protocols called AT and MP. AT is very similar to the Hayes AT protocol found in traditional modems allowing control of one Bluetooth connection at a time. MP is a multipoint packet-based protocol which allows the management of multiple simultaneous connections.

The BT740 ship from Laird facilities with a factory default in AT mode with communications setting of 9600,N,8,1.

This guide covers the topics below on the BT740 which is preconfigured in AT mode at production. If you chose to convert the BT740 to MultiPoint (MP) mode, follow the *Convert Protocol* section to switch protocol modes.

---

**Note:** Detailed description of both protocols can be found in the BT740 User Manual.

---

### REQUIREMENTS

- DVK-BT740 including BT740 carrier board
- BRBLU03-010A0 USB Bluetooth adapter or Computer with built-in Bluetooth
- BT740 development motherboard
- Windows XP Operating System or later
- Terminal Software such as Laird / EZURiO terminal (in software tab of [BT740 product page](#))
- Laird's MpBtHost utility (if using MultiPoint functionality) (in software tab of [BT740 product page](#))
- RS232 cable or USB-RS232 adaptor



Figure 1: BT740-SA Module

The development kit motherboard's USB socket provides **ONLY** power to the module. A RS232 connection is required to have serial communications with the module on the carrier board. Laird provides a terminal emulator program called Laird / EZURiO Terminal for AT mode operation but you can use your preferred terminal emulator program in its place. Another program Laird provides is MpBtHost for multipoint (MP) mode operation. This example uses the Microsoft Bluetooth stack and software that comes with Windows 7. If your computer has built-in Bluetooth support, you can modify the computer aspect of the procedure documented below to match your existing Bluetooth instead of using the supplied BRBLU03-010A0.

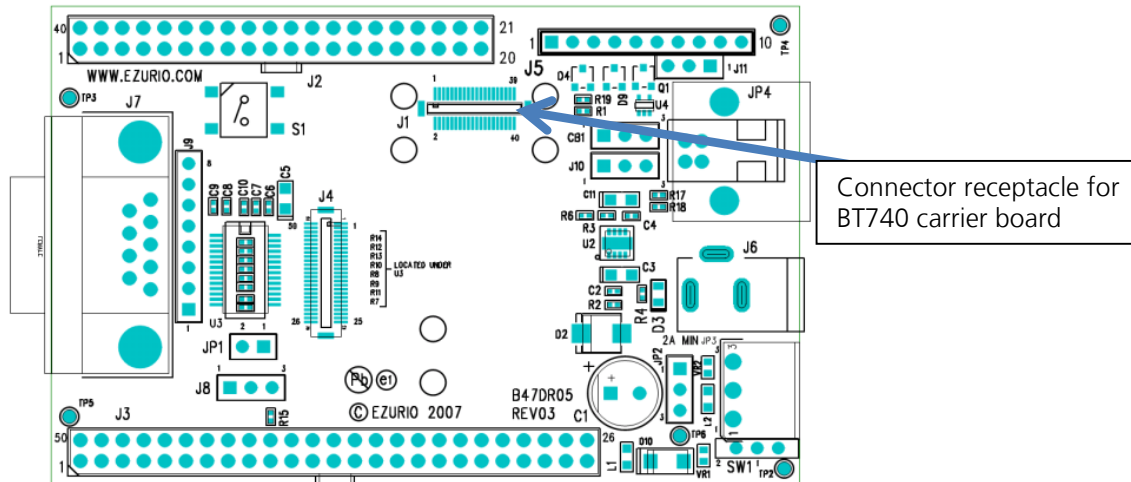
### PREPARATION

To prepare your setup, follow these steps:

1. Plug in the BT740 Carrier Board to the DVK motherboard.

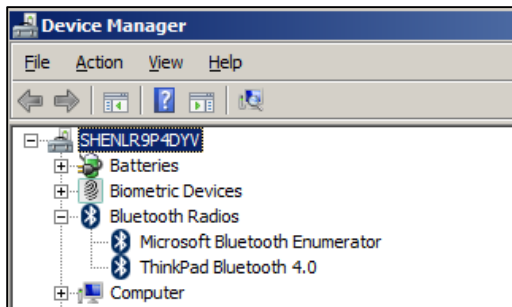
## BT740 Development Kit Quick Start Guide

**NOTE:** The carrier board plugs into 40-pin Hirose connector as shown in [Figure 2](#).



*Figure 2: Carrier board connector*

2. Connect RS232/USB-RS232 to the computer and development board.
3. Connect the USB cable to the computer and development board. TP2 is the power switch and there is an LED for power indication.
4. Install your preferred terminal program. We recommend using Laird / Ezurio Terminal.
5. Install MpBtHost, if utilising MP mode.
6. Check your Device Manager to determine whether or not your computer is equipped with Bluetooth.



*Figure 3: Device Manager*

## BT740 Development Kit

### Quick Start Guide

7. Plug in the BRBLU03-010A0 if your computer is not equipped with Bluetooth

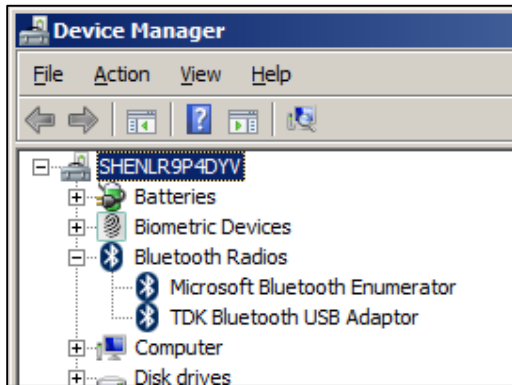


Figure 4: Device Manager - Bluetooth radios

## AT MODE

### Obtain Version & Bluetooth Address

In this example, the module is physically connected to the computer on COM47. See the commands in Figure 5 to check firmware version and Bluetooth address. The COM port number can be found in Device Manager.

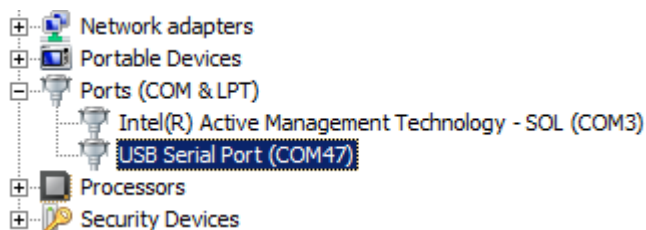
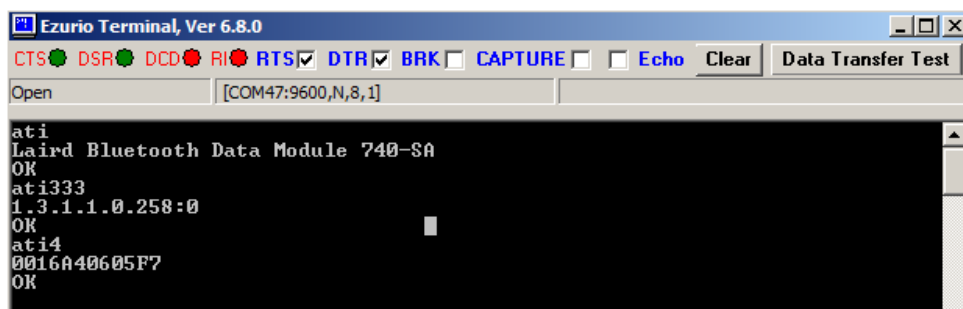


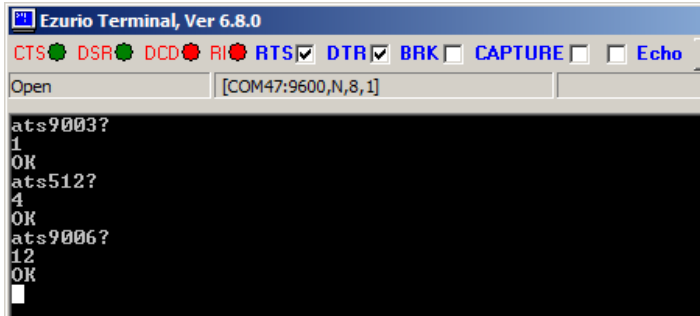
Figure 5: Commands for checking firmware version and BT address

## BT740 Development Kit

### Quick Start Guide

## Configuration

By default, BT740 is configured as SPP enabled, Discoverable and Connectable, SSP + IO\_CAP\_NO\_INPUT\_NO\_OUTPUT (Figure 6).

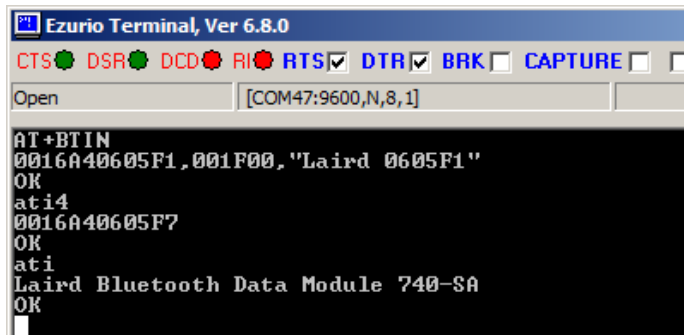


```
Ezurio Terminal, Ver 6.8.0
CTS [x] DSR [x] DCD [x] RI [x] RTS [x] DTR [x] BRK [ ] CAPTURE [ ] Echo [ ]
Open [COM47:9600,N,8,1]
ats9003?
1
OK
ats512?
4
OK
ats9006?
12
OK
```

Figure 6: Configuration defaults

## Make Inquiry

You can inquiry nearby Bluetooth devices by issuing AT+BTIN. In Figure 7, BT740 (MAC address: 0016A40605F1) found another Laird module with MAC address 0016A40605F1.



```
Ezurio Terminal, Ver 6.8.0
CTS [x] DSR [x] DCD [x] RI [x] RTS [x] DTR [x] BRK [ ] CAPTURE [ ]
Open [COM47:9600,N,8,1]
AT+BTIN
0016A40605F1,001F00,"Laird 0605F1"
OK
ati4
0016A40605F7
OK
ati
Laird Bluetooth Data Module 740-SA
OK
```

Figure 7: Inquiry example

## Pair from PC

To order to pair with a Bluetooth device from your PC, follow these steps:

1. Access **Devices and Printers > Bluetooth Devices**
1. Click **Add a device** (Figure 8).

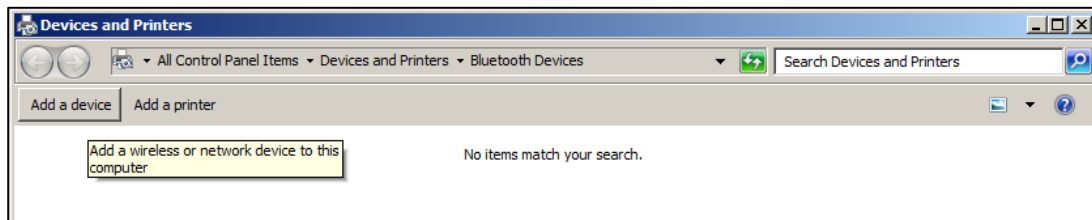
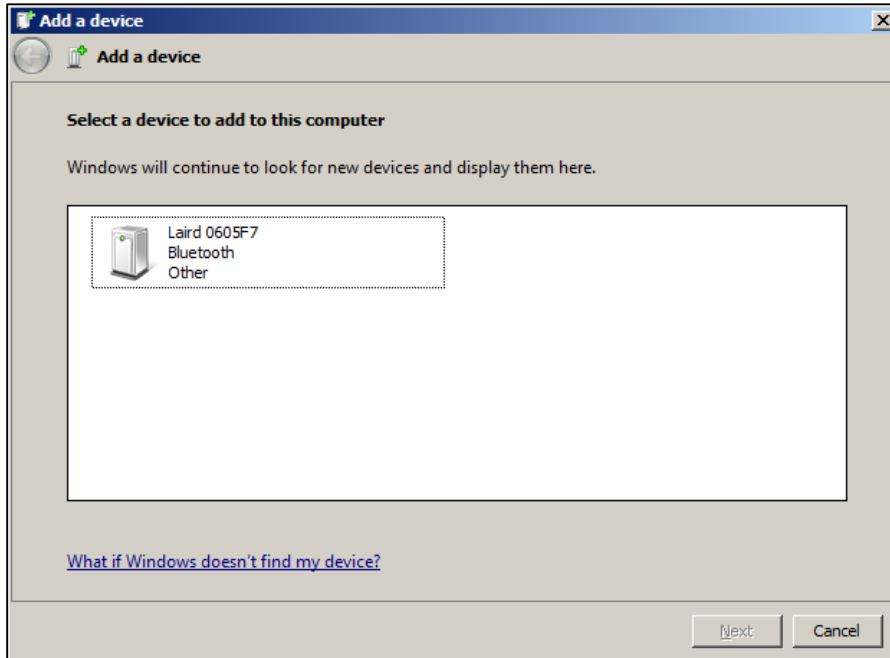


Figure 8: Select Add a device

## BT740 Development Kit

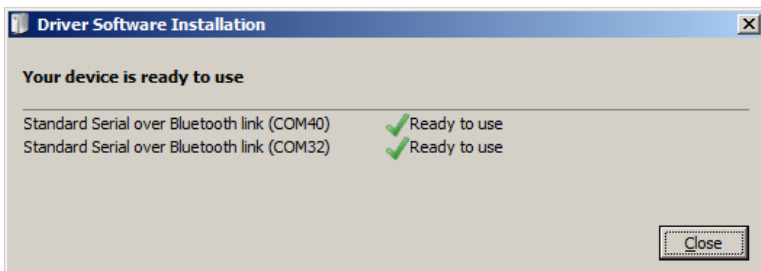
### Quick Start Guide

2. Select BT740 module and click **Next**. In [Figure 9](#), Laird 0605F7 is the Bluetooth Friendly name which is configurable.



*Figure 9: Select the BT module*

3. When the device is successfully added and the two virtual COM ports are ready to use, click **Close** ([Figure 10](#)).



*Figure 10: Virtual COM ports - ready to use*

## BT740 Development Kit Quick Start Guide

The two virtual COM ports display in the COM Ports tab (Figure 11).

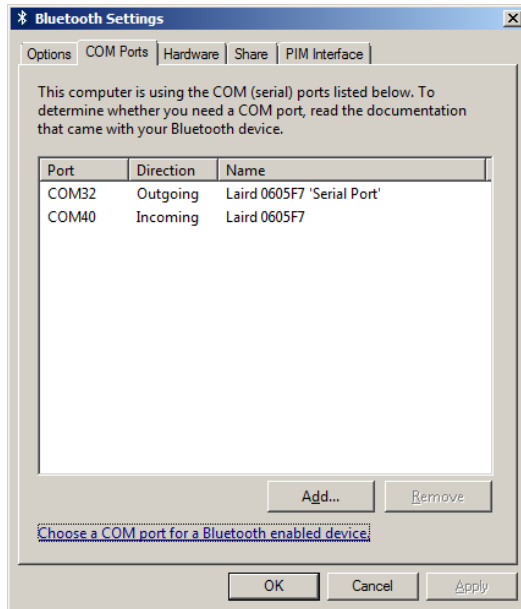


Figure 11: Displayed COM ports

## Pair with Module

After inquiry, issue "AT+BTW<peer address>" to start pairing. PAIR 0 indicates pairing is successful. The purpose of AT+BTT? is to check if the link key is stored (Figure 12).

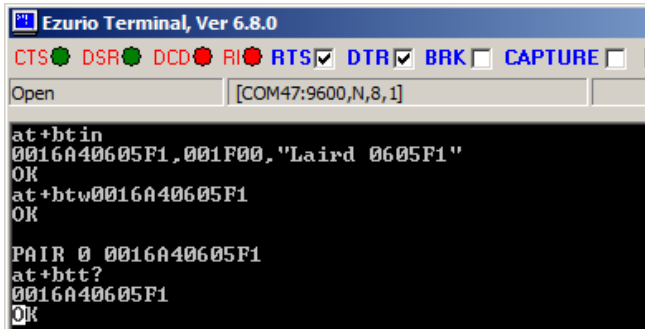


Figure 12: Pairing with the module

## Make SPP Connection from PC to Module

In the previous section, the Windows BT stack has allocated COM32 as the outgoing virtual COM port. You can open COM32 with a terminal program to make an SPP connection to the module which is on COM47; a transparent UART communication is established between these two COM ports (Figure 13).

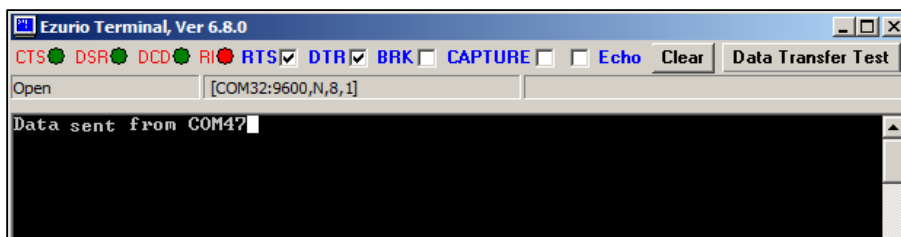


Figure 13: SPP connection

## BT740 Development Kit Quick Start Guide

The DCD LED indicates SPP connection is established (Figure 14).

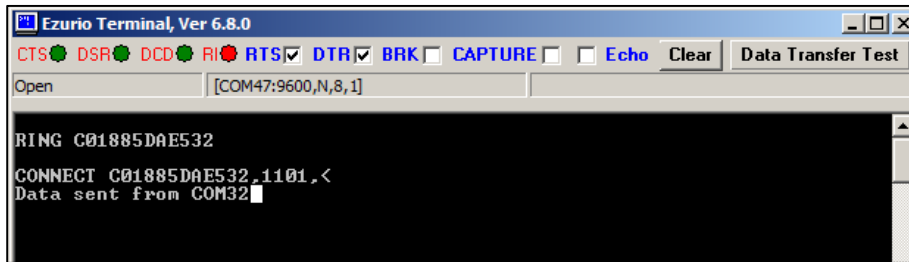


Figure 14: DCD LED indication

## Make SPP Connection from Module to Module

Another Laird module with MAC address 0016A40605F1 is physically connected on COM24 (Figure 15).

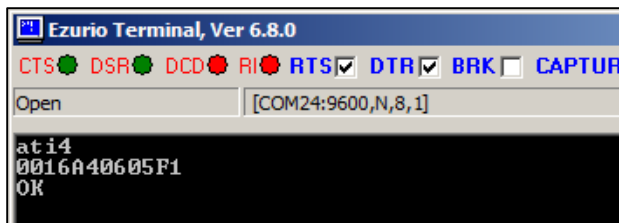


Figure 15: Module to module connection

In order to make an SPP connection from a module with MAC address 0016A40605F7 to another module with MAC address 0016A40605F1, issue **ATD<peer MAC address>** (Figure 16).

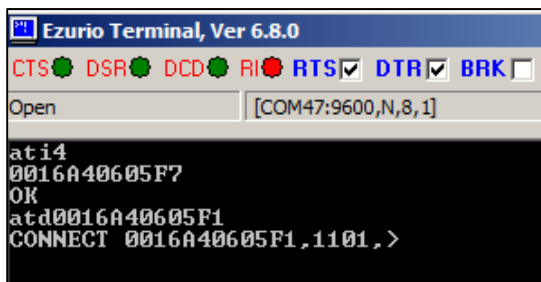


Figure 16: ATD<peer MAC address> issued

A transparent UART communication is established between these 2 COM ports. DCD LED indicates SPP connection is established (Figure 17).

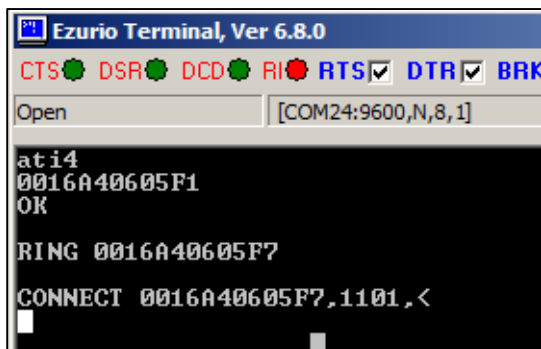
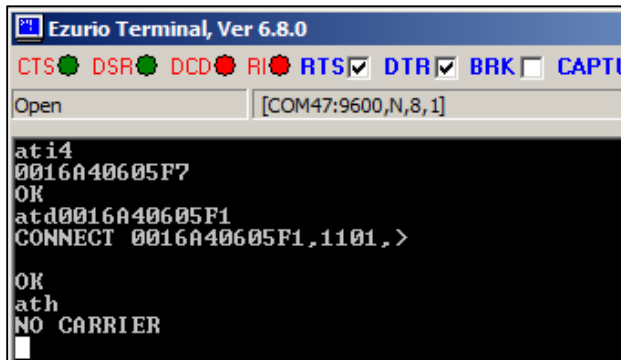


Figure 17: DCD LED indicator

## Drop Connection

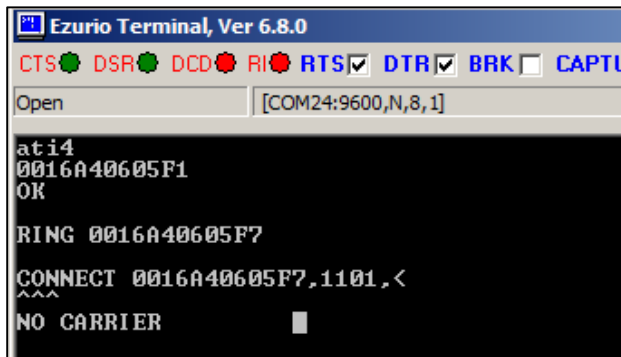
To drop the connection, issue the “^^^” command to switch to Connected mode. The BT740 responds with OK to indicate the switch is successful and then issues “ATH” to drop the SPP connection (Figure 18).



```
Ezurio Terminal, Ver 6.8.0
CTS DSR DCD RI RTS DTR BRK CAPTU
Open [COM47:9600,N,8,1]
at+4
0016A40605F7
OK
atd0016A40605F1
CONNECT 0016A40605F1,1101,>
OK
ath
NO CARRIER
```

Figure 18: Drop connection command

Note that “^^^” is also treated as data and is transmitted to another module (Figure 19).



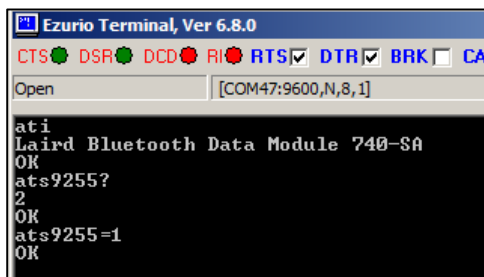
```
Ezurio Terminal, Ver 6.8.0
CTS DSR DCD RI RTS DTR BRK CAPTU
Open [COM24:9600,N,8,1]
at+4
0016A40605F1
OK
RING 0016A40605F7
CONNECT 0016A40605F7,1101,<
^^^
NO CARRIER
```

Figure 19: ^^^ transmitted as data

## CONVERT PROTOCOL

### Convert from AT to MP mode

The S Register (9255) is to set the protocol mode. Send “ATS9255=1” and power cycle the module to put it in MP mode (Figure 20 and Figure 20).



```
Ezurio Terminal, Ver 6.8.0
CTS DSR DCD RI RTS DTR BRK CA
Open [COM47:9600,N,8,1]
ati
Laird Bluetooth Data Module 740-SA
OK
ats9255?
2
OK
ats9255=1
OK
```

Figure 20: S Register (9255) for protocol mode



## BT740 Development Kit Quick Start Guide

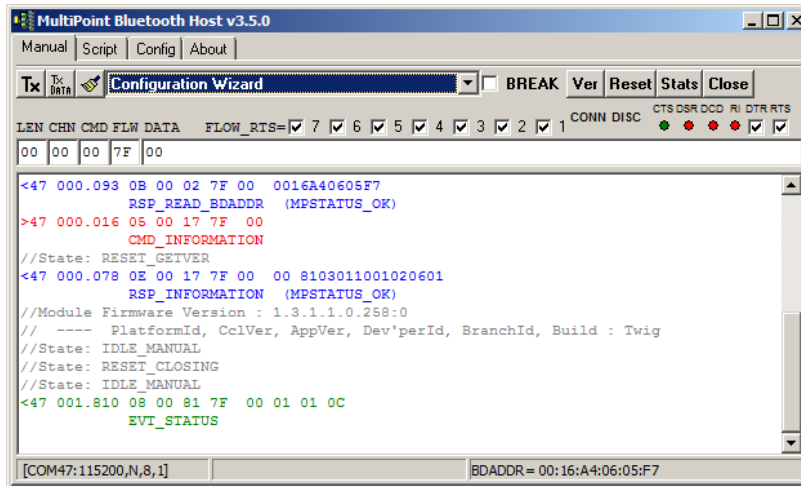


Figure 21: MpBTHost – MP mode

## Convert from MP to AT mode

There is an S register (0xFF) to set the protocol mode (Figure 22).

			Host Communications Protocol
			1 = Multipoint Packet Protocol
255 (FF)	1	2	2 = AT Protocol

*Automatically saved to non-vol memory on write*

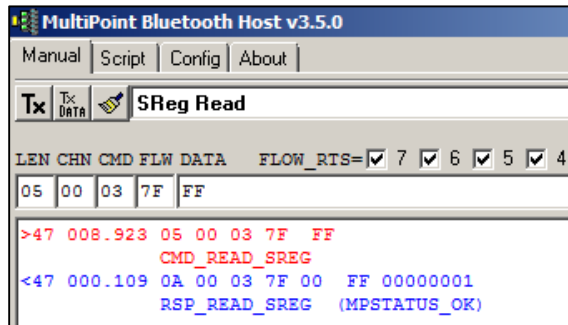


Figure 22: S Reg (protocol mode)

To put the module in AT mode, you can set the register (0xFF) value to 0x02, and power cycle the module (Figure 23).

## BT740 Development Kit

### Quick Start Guide

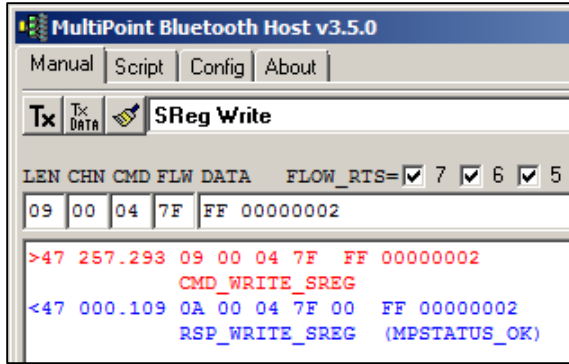


Figure 23: S Reg to put module in AT mode

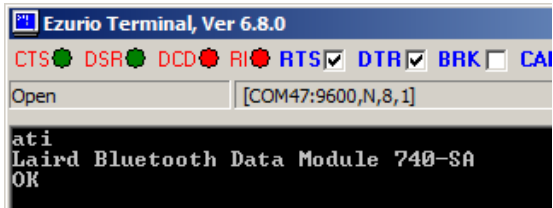


Figure 24: Converted to AT mode

## MP MODE

The development board with the BT740 carrier board is connected to the computer on COM47.

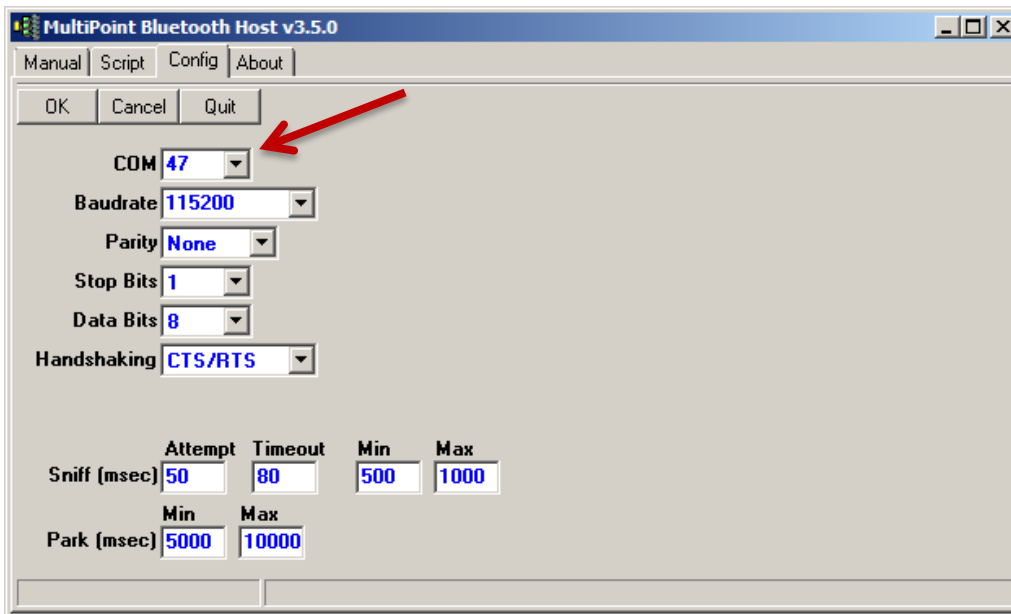


Figure 25: Multipoint Bluetooth Host window

This BT740 module is loaded with the following:

- Firmware: 1.3.1.1.0.258
- MAC address: 0016A40605F7.

## BT740 Development Kit Quick Start Guide

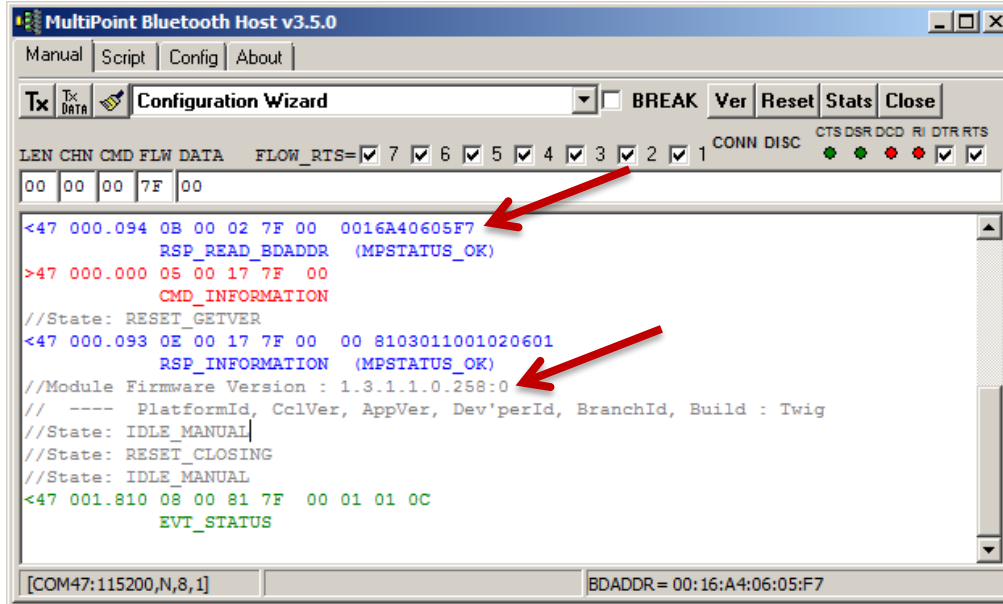


Figure 26: Firmware version and MAC address

There are small LED emulation graphics labelled CTS/RTS/DCD/RI/RTS. These reflect the actual state of the modem control lines as asserted by the module.

For command packets (red lines), note an extra spacing after the fourth character (for example: **05 00 17 7F 00**). This extra space highlights the fact that the first four bytes of a multipoint command packet is the header, with the third byte corresponding to the CMD\_ID as described in the user manual, and all bytes after the fourth byte constitute data fields as defined for that particular command.

For responses (blue lines), note the extra spacing after the fifth byte (for example: **0B 00 02 7F 00**). This extra space highlights the fact that the first five bytes is the header and the fifth byte, as described in the user manual, is the status byte (00 signifies MPSTATUS\_OK). Everything after the fifth byte constitutes data as defined for each response in the user manual.

The asynchronous event message shown in green consists of a four byte header and data as defined in the user manual. The third byte of the message is the EVT\_ID.

## Obtain Version and Bluetooth Address

To obtain the version and Bluetooth address, follow these steps:

1. In MpBtHost window, click the paint brush icon button to clear the log window.

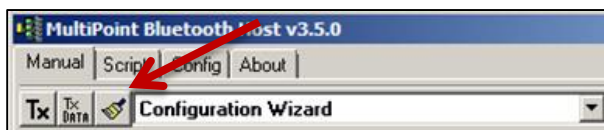


Figure 27: Configuration window drop-down

2. Click the dropdown box (Figure 27) and select **Information**.
3. Click **Tx** (Figure 27).

The following information should display:

```
>70 915.211 05 00 17 7F 00
CMD_INFORMATION
<70 000.125 0E 00 17 7F 00 00 8101011100D70601
RSP_INFORMATION (MPSTATUS_OK)
```

## BT740 Development Kit

### Quick Start Guide

```
//Module Firmware Version : 1.1.1.1.1.215:0
// ---- PlatformId, CclVer, AppVer, Dev'perId, BranchId, Build : Twig
```

Depending on the firmware version, the final part of the blue line 8101011100D70601 varies depending on the version number. The format of the version information is described in the main user manual and is also explained in grey font above.

4. Clear the log window by clicking the paint brush icon.
5. Click on the dropdown box again and select **Read BD\_ADDR**.
6. Click on the button labelled "Tx" and should see the following activity:

```
>70 364.465 04 00 02 7F
CMD_READ_BDADDR
<70 000.125 0B 00 02 7F 00 0016A4FEF000
RSP_READ_BDADDR (MPSTATUS_OK)
```

The six byte Bluetooth address is unique.

---

**Note:** For each line, whether command, response or event, the first character (either < or>) signifies the direction of the packet. > signifies a command from host to module and < signifies a response or event from the module to the host. A number is located after the < or >; this number is the COM port number. The following field (for example, 364.465 and 000.125) is the time elapsed (in milliseconds) since the last packet (regardless of direction).

---

## Configuration

By default, BT740 is configured as discoverable, connectable, Serial Port Profile (SPP) enabled, and SSP+IO\_CAP\_NO\_INPUT\_NO\_OUTPUT. No configuration is required for the SPP connection demonstrated in this section. For a detailed description of IO capability, refer to the user manual and the *IO Capability* section in this guide.

## S Registers

Table 1: S Registers

RegNo Dec (Hex)	Min	Max	Description
3 (03)	0	3	Server Profile record Mask Bit 0 = SPP Bit 1 = HID Bit 2 = HDP If HID is enabled, see S Reg 39 for further configuration options in terms of device or host implementation. If HDP is enabled, see S Reg 70 for further configuration options in terms of agent or manager services.
4 (04)	0	1	Default Connectable mode on power up/reset
5 (05)	0	2	Default Discoverable mode on power up/reset
6 (06)	12	15	Default Security mode on power up/reset 12 = SSP + IO_CAP_NO_INPUT_NO_OUTPUT 13 = SSP + IO_CAP_DISPLAY_YES_NO 14 = SSP + IO_CAP_KEYBOARD_ONLY 15 = SSP + IO_CAP_DISPLAY_ONLY

## BT740 Development Kit Quick Start Guide

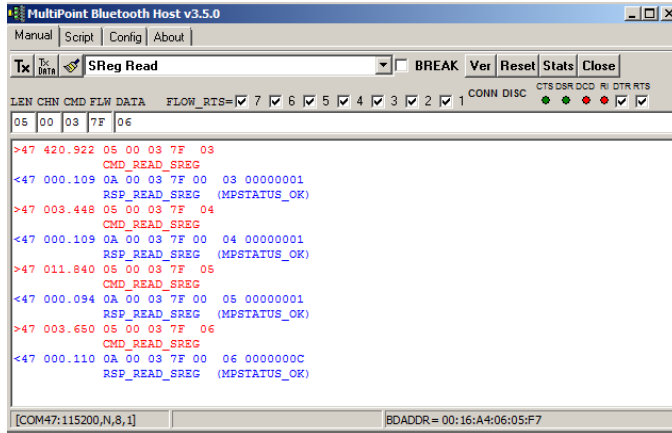


Figure 28: S Registers

SReg read on these registers return 01, 01, 01, and 0x0C, which can be interpreted as Discoverable, Connectable, SPP, and SSP+IO\_CAP\_NO\_INPUT\_NO\_OUTPUT.

## Pair from PC

To pair with a Bluetooth device, follow these steps:

1. Access **Devices and Printers > Bluetooth Devices**
2. Click **Add a device** (Figure 29).

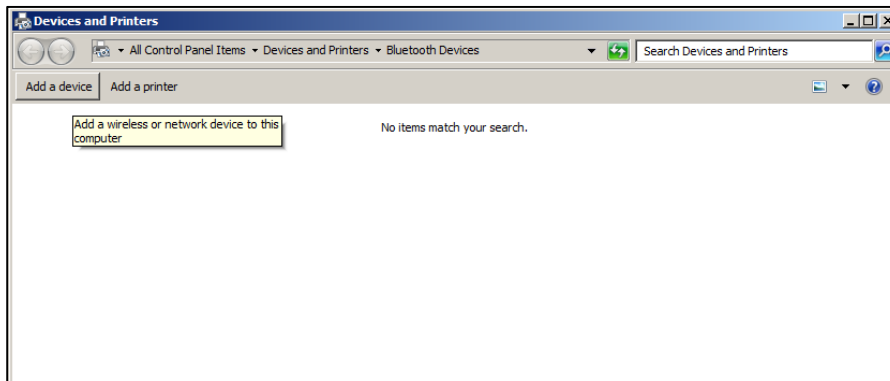
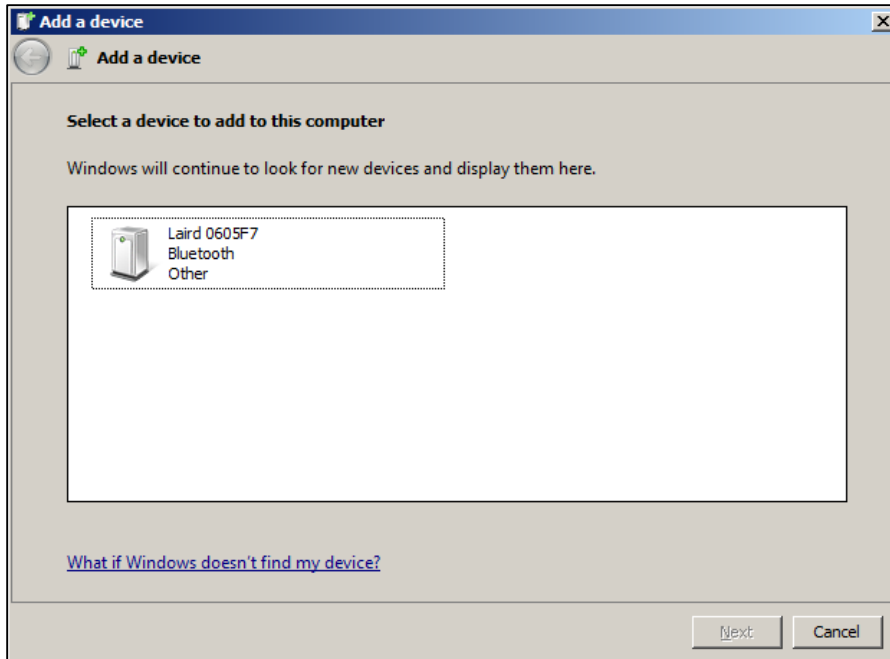


Figure 29: Select Add a device

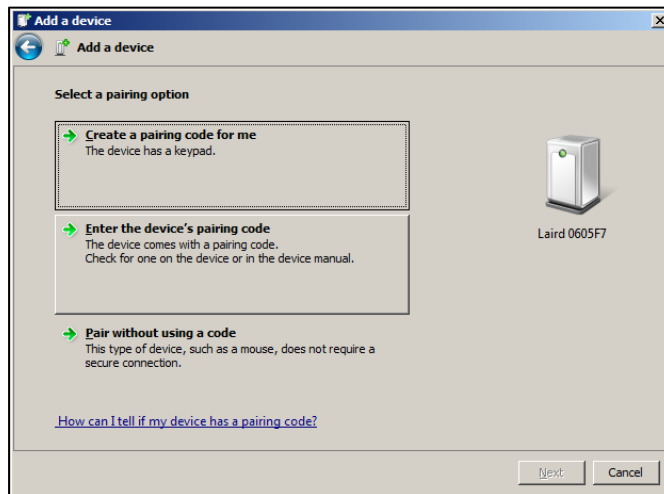
3. Select BT740 module and click **Next**. In Figure 30, Laird 0605F7 is the Bluetooth Friendly name which is configurable.



*Figure 30: Add a device window*

If the computer is not equipped with built-in Bluetooth and the BRBLU03-010A0 USB Bluetooth adapter is used, the following additional steps are required:

- a. From the *Select a pairing option* window, select **Enter the device's pairing code** (Figure 31).



*Figure 31: Select a pairing option window*

- b. Enter *1234* as the pairing code (Figure 32).

## BT740 Development Kit Quick Start Guide

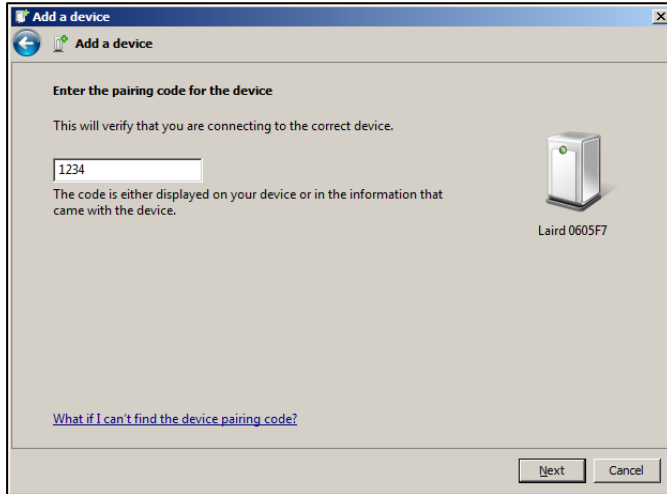


Figure 32: Enter pairing code

- c. In the pop-up dialog box, click **Ok** to complete the pairing (Figure 33).

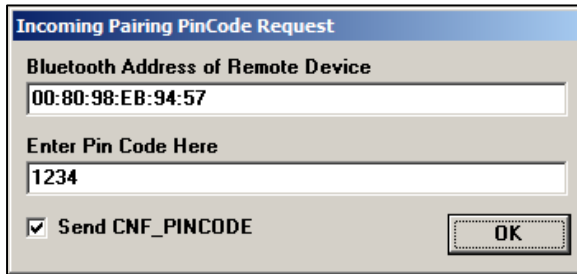


Figure 33: Incoming Pairing PinCode Request window

4. When the device is successfully added and the two virtual COM ports are ready to use, click **Close** (Figure 34).

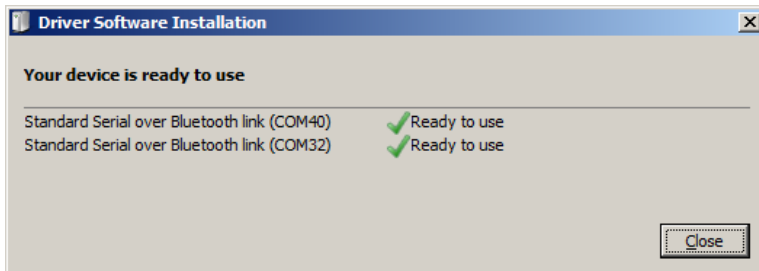


Figure 34: Virtual COM ports - ready to use

The two virtual com ports display in the COM Ports tab (Figure 35).

## BT740 Development Kit Quick Start Guide

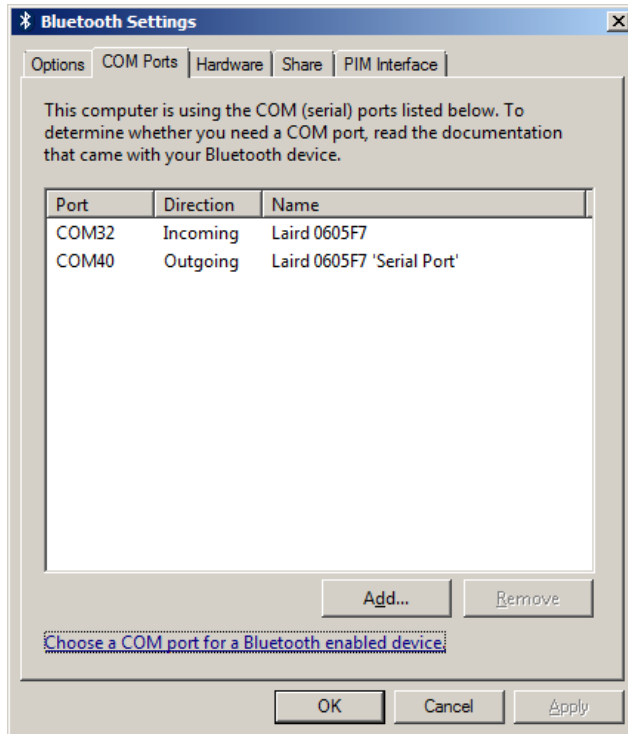


Figure 35: COM Ports tab

Explanation of this different behaviour can be found at the very last section of this guide, [Difference between BTv2.0 and BTv2.1](#).

### Make Serial Port Profile Data (SPP) Connection

When pairing is complete, two virtual COM ports are created by the BT stack on the computer. The BT stack also assigns the COM port numbers so the numbers vary depending on the computer.

To make the SPP connection from PC to module, open the outgoing COM port (COM 40) with a terminal program. MpBTHost opens a new dialog box which enables data to be sent back and forth in a terminal emulation window fashion (Figure 36).

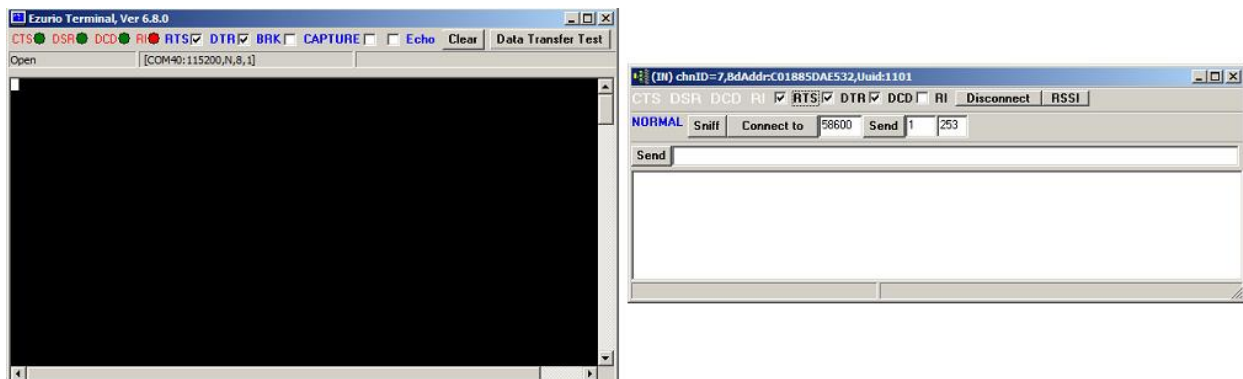


Figure 36: MpBTHost and Terminal dialogs

In addition, the log activity at the connection initiating end will resemble [Figure 37](#).



## BT740 Development Kit Quick Start Guide

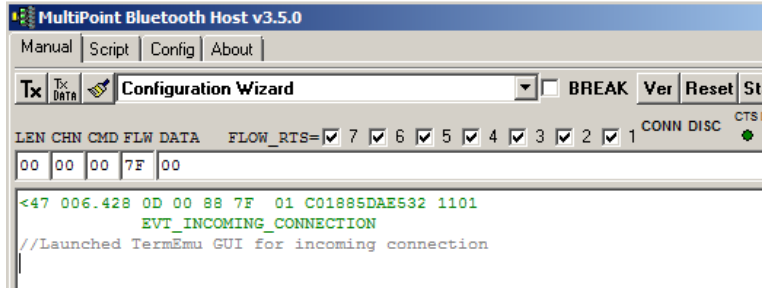


Figure 37: Log activity

"0D 00 88 7F 07 C01885DAE532 1101" is actual serial data sent from the module on its UART interface. 0x07 indicates the Channel ID, and C01885DAE532 is the BT MAC address making the SPP connection to the module.

## Send Data in Both Directions

Assuming that a data connection exists using the steps shown in the previous section, you should be able to type a message in terminal emulation window (COM47) and see the data appear at the other end (COM40).

For example type in *Hello* and type *Send...*

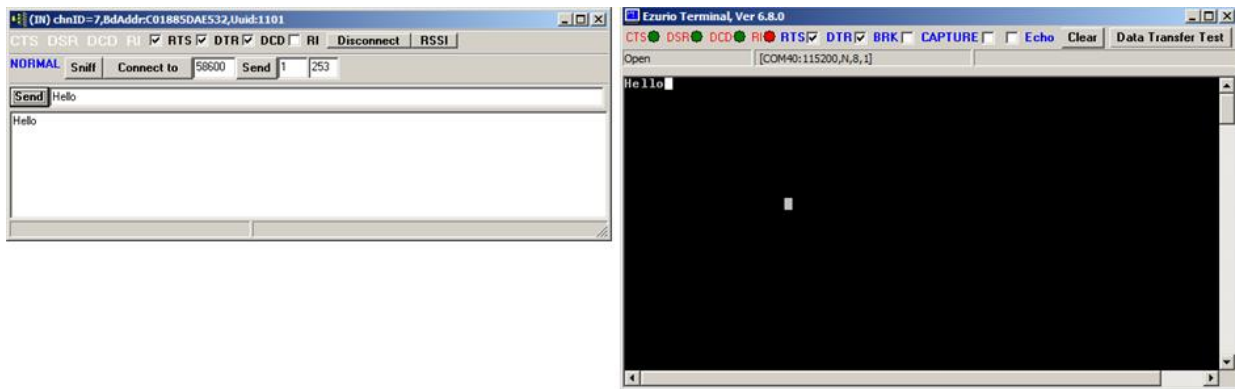


Figure 38: COM 47 and COM 40 exchanging data

"07 07 48656C6C6F" is the actual serial data that should be sent to the module in order send *Hello* over the BT SPP connection (Figure 39):

- First 0x07 – Indicates the total length of the packet.
- Second 0x07 – Indicates the channel ID.
- 48656C6C6F – "Hello" in hex value.

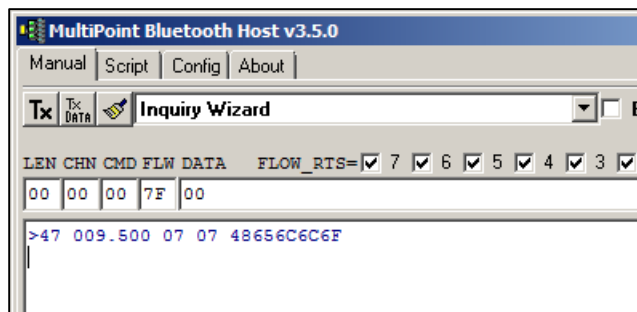


Figure 39: Actual serial data

## BT740 Development Kit Quick Start Guide

When we type `AC` on COM40, `AC` is displayed on the terminal emulation window (COM47) (Figure 40).

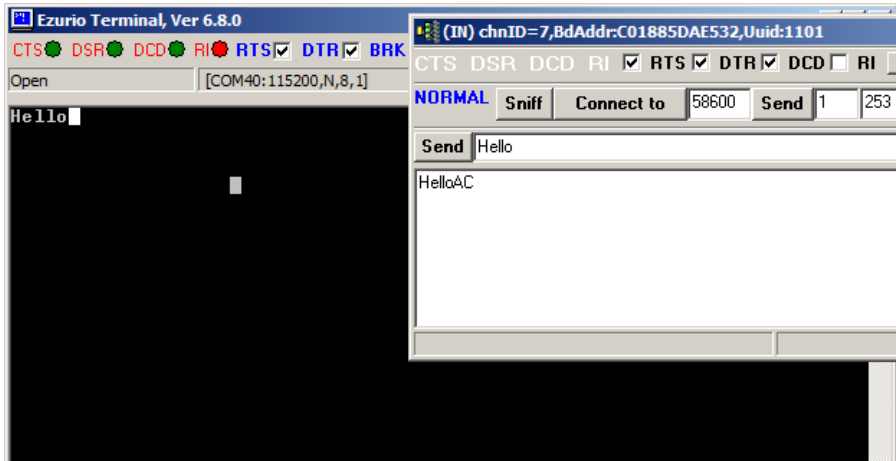


Figure 40: Terminal emulation window

The following (Figure 41) is the log window for the exchange above (Figure 40).

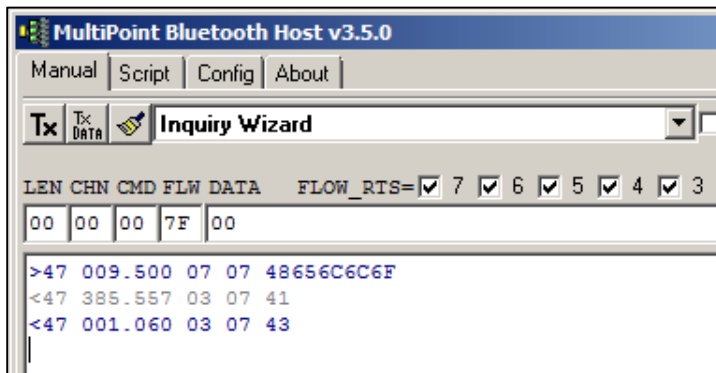


Figure 41: Log window

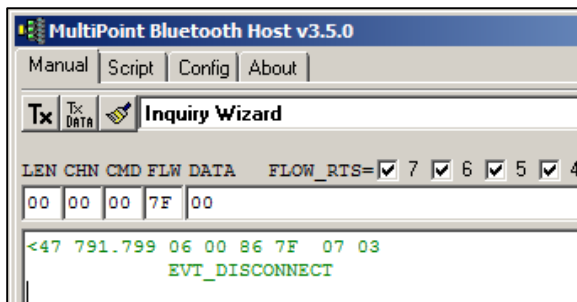
```
<47 385.557 03 07 41  
<47 001.060 03 07 43
```

These two lines are the actual serial data sent from the module:

- 0x03 – Indicates the total length of the packet.
- 0x07 – Indicates the channel ID
- 0x41 and 0x43 – The hex values of AC.

## Drop Connection

To drop the connection, close the terminal program on COM40 (Figure 42).



## BT740 Development Kit Quick Start Guide

Figure 42: Closed Terminal

“06 00 86 7F 07 03” is the serial data that should be sent from the module UART to indicate channel 0x07 is disconnected.

## SIMULTANEOUS CONNECTIONS IN MP MODE

When BT740 is operating in MP mode, it allows simultaneous connections. For example, the module can function as a HID keyboard and make or accept SPP.

## Configuration

In order to enable HID and SPP, follow these steps:

1. Change the S Register (0x03) to 0x03 (Figure 43).

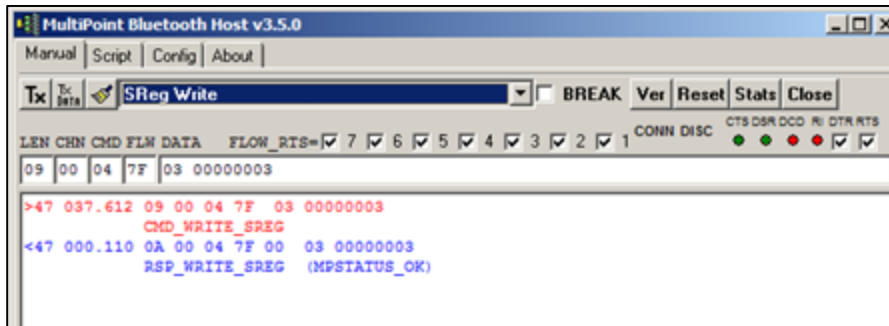


Figure 43: Change the S Register

2. Store the S Register (Figure 44).

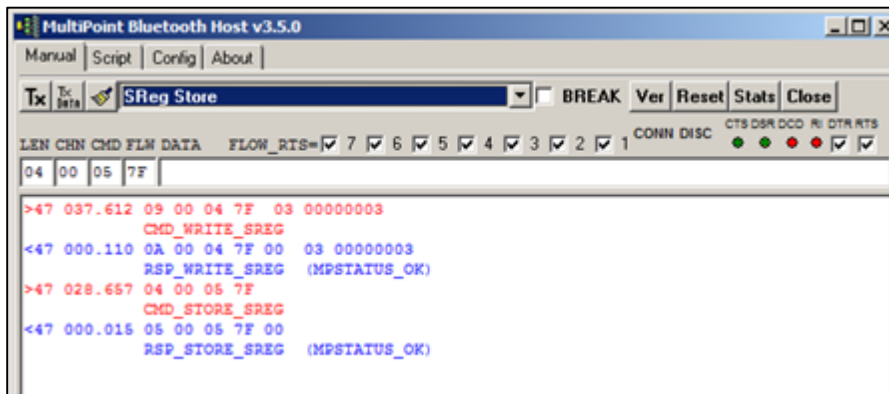


Figure 44: Store the S Register

3. Reboot the module.
4. Click **Reset** (Figure 45).

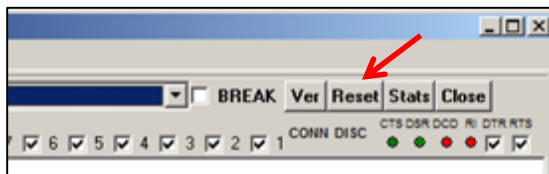


Figure 45: Reset button

## BT740 Development Kit

### Quick Start Guide

- Set the computer built-in Bluetooth as Discoverable in *Bluetooth Settings* (Figure 46).

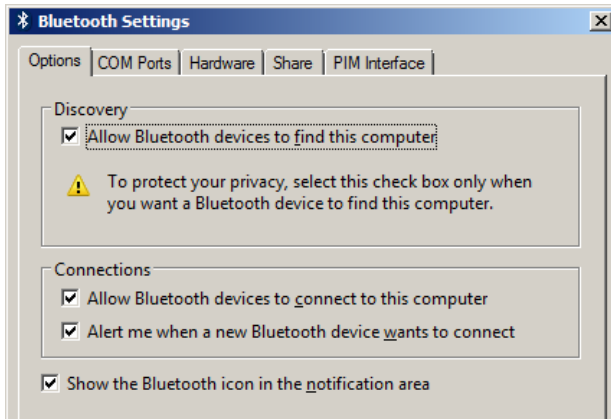


Figure 46: Bluetooth Settings

## Pairing

To perform pairing, follow these steps:

- From the drop-down menu, select **Inquiry Wizard** (Figure 47).

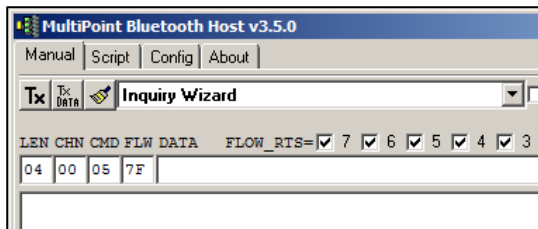


Figure 47: Select Inquiry Wizard

- Click **Inquire** (Figure 48).

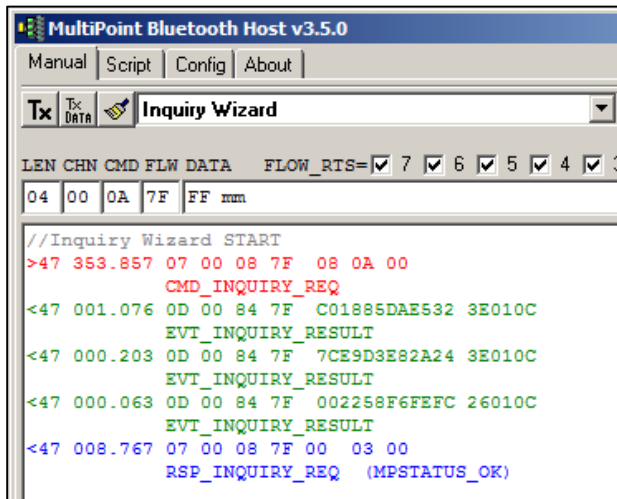


Figure 48: Click Inquire

The computer Bluetooth (MAC address C01885DAE532) is found.

## BT740 Development Kit

### Quick Start Guide

- From the drop-down list, select **Pairing Wizard** (Figure 49).

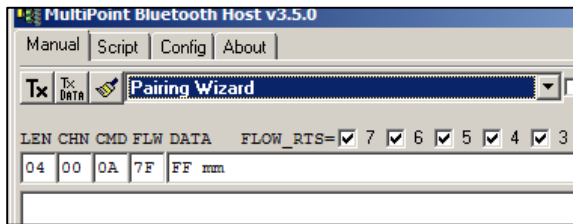


Figure 49: Select Pairing Wizard

- In the Bluetooth Address drop-down menu, select the Bluetooth Address you want to pair with and click **Pair Initiate**.

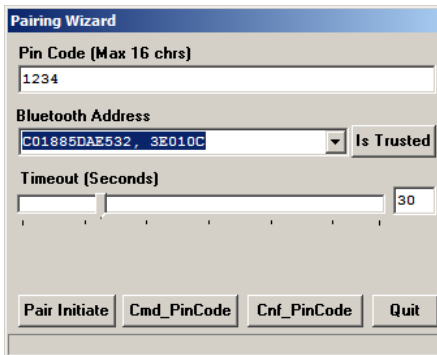


Figure 50: Pairing Wizard

## BT740 Development Kit Quick Start Guide

A pop-up window indicates that a new device is added. In this example, this is a HID keyboard (Figure 51).

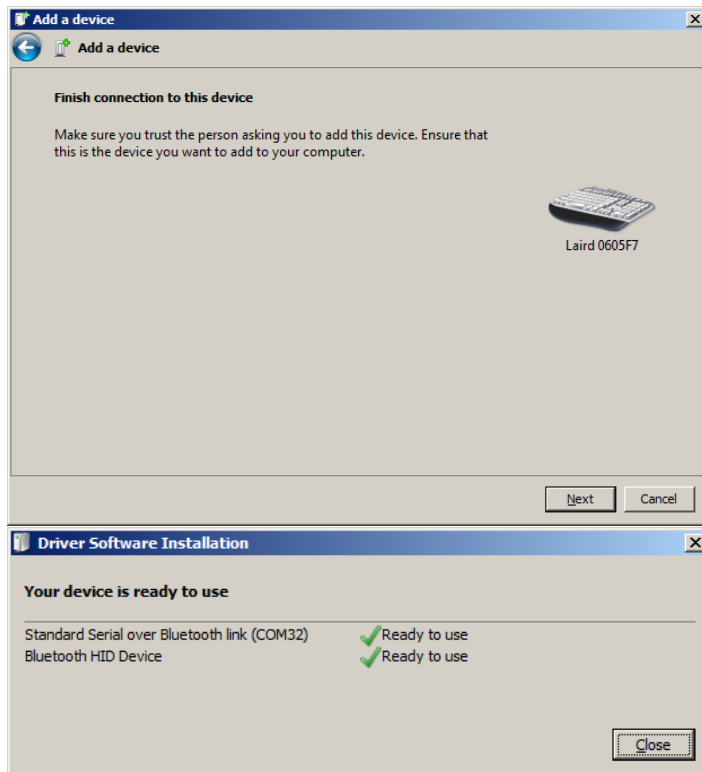


Figure 51: New device pop-up window

Also, an outgoing virtual COM port (COM32) is generated (Figure 52).

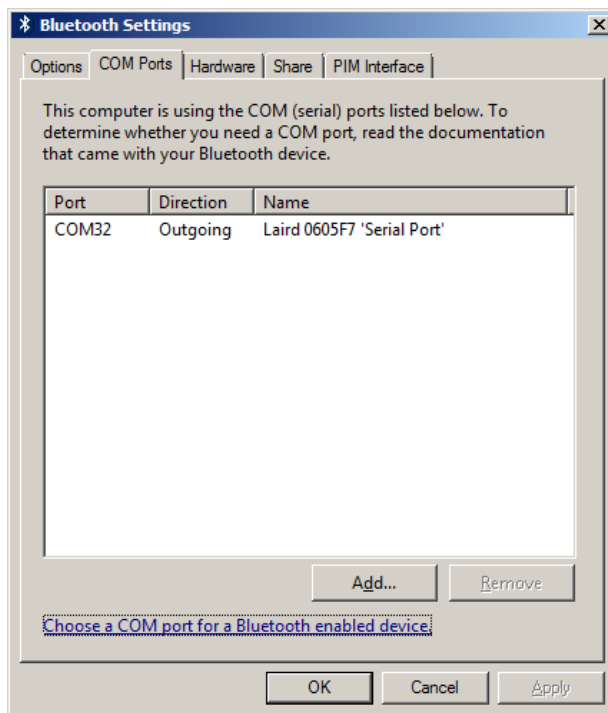


Figure 52: COM32 device is generated

## Connection

To establish a connection, follow these steps:

1. Open the Connect Wizard from the drop-down menu.
2. Select your computer and HID from the Connect Wizard drop-down menus (Figure 53).

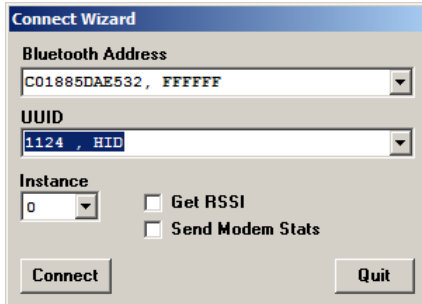


Figure 53: Connect Wizard

3. Click **Connect**. An HID emulation window displays (Figure 54).

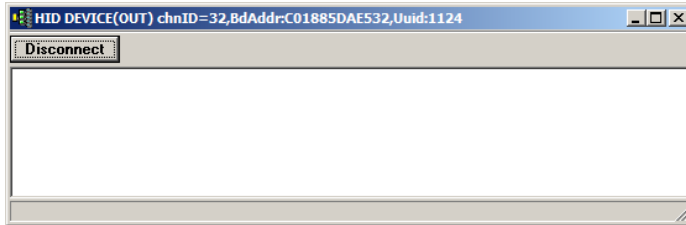


Figure 54: HID emulation window

4. Open the virtual COM port (COM32) with terminal software (Figure 55).

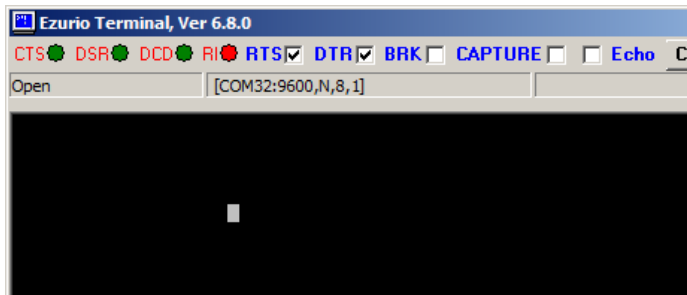


Figure 55: Terminal software virtual COM port

Another terminal window appears for the SPP connection (Figure 56). Here, HID and SPP are connected concurrently.

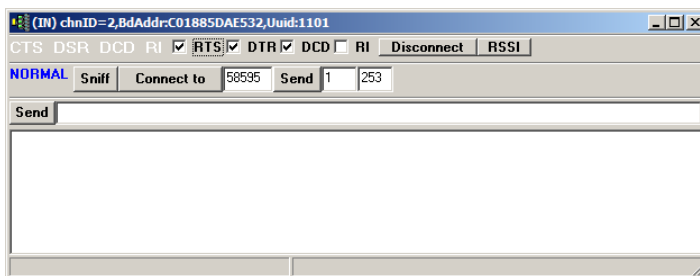


Figure 56: Second terminal window for SPP

## DIFFERENCE BETWEEN BTv2.0 AND BTv2.1

One of the major differences between Bluetooth v2.0 and Bluetooth v2.1 is the introduction of Simple Secure Pairing (SSP). SSP simplifies pairing so it doesn't rely on a pre-shared pin code as it was in BTv2.0. With BTv2.1, all connections are forced to be encrypted.

SSP uses the Diffie-Hellman public/private encryption methodology to expedite a common 128 bit key at both ends. This eliminates the need for pre-shared pin codes but introduces the 'man in the middle' (MITM) attack vulnerability. To reduce the possibility of being successfully attacked, a random six-digit passcode is used.

Bluetooth v2.1 devices are required to have I/O capability to ensure that users can interact to the six digit passcode. One example is mobile phones: they can display the passcode and the user can click **Yes** to pair.

Bluetooth v2.0 devices require a pre-shared pin code for pairing. Today, there are still many M2M applications with BT v2.0 connectivity. These M2M devices do not typically have I/O capability, such as a display or Yes/No options for users to perform pairing. Most importantly, they can be in hard-to-reach places.

On the BT740, the pre-shared pin code can be pre-entered before pairing takes place if it is a BT v2.0 device the module is attempting to pair with. Further explanation can be found in [Pairing Procedure](#).

### I/O capability

The I/O capability of the module is set via S Register 6 (9006 in AT mode) with the following values:

- 12(0x0C) = No I/O capability
- 13(0x0D) = Display with Yes/No
- 14(0x0E) = Keyboard only
- 15(0x0F) = Display Only

When both ends are *Keyboard only*, a pre-shared six digit number can be entered.

When both are *Display only*, it is unlikely the devices have services that are useful to either. It may be a contrived combination.

Users should set the module I/O capability value which is suitable to their applications.

### Pairing Procedure

Depending on the peer device, either a legacy pairing or a SSP procedure occurs. [Table 2](#) lists combinations:

*Table 2: Pairing procedures*

Local Device	Peer Device	Pairing
BTM74X	BT 2.1 or later	SSP
BTM74X	BT 2.0	Legacy pairing

To demonstrate the difference, see the following sections.

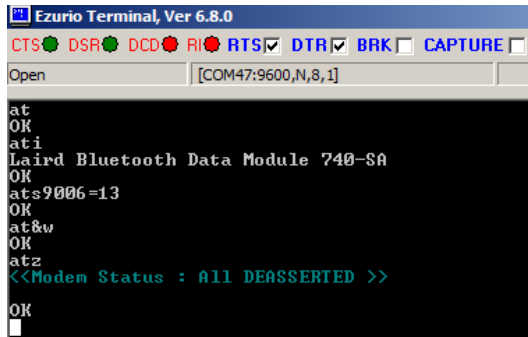


## BT740 Development Kit

### Quick Start Guide

#### Pair with phone equipped with BT 2.1 or later

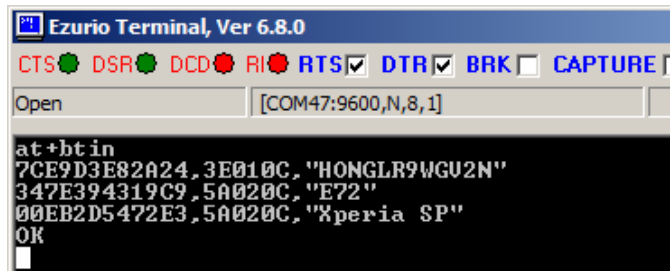
1. Configure the module with the AT commands below (Figure 57).



```
Ezurio Terminal, Ver 6.8.0
CTS DSR DCD RI RTS DTR BRK CAPTURE
Open [COM47:9600,N,8,1]
at
OK
ati
Laird Bluetooth Data Module 740-SA
OK
ats9006=13
OK
at&w
OK
atz
<<Modem Status : All DEASSERTED >>
OK
```

Figure 57: Configuration AT commands

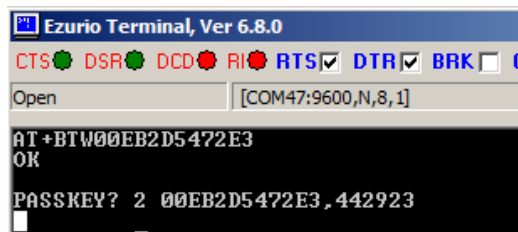
2. Pair with two mobile phones: Sony Xperia SP and Nokia E72. The Sony phone is equipped with BT 4.0, while the Nokia phone is equipped with BT 2.0.
3. Configure both phones to be Bluetooth discoverable before pairing. Different responses occur.
4. Issue AT+BTIN to discover these two phones (Figure 58).



```
Ezurio Terminal, Ver 6.8.0
CTS DSR DCD RI RTS DTR BRK CAPTURE
Open [COM47:9600,N,8,1]
at+btin
7CE9D3E82A24,3E010C,"HONGLR9WGU2N"
347E394319C9,5A020C,"E72"
00EB2D5472E3,5A020C,"Xperia SP"
OK
```

Figure 58: Issue AT+BTIN

5. Use the following commands to pair with the Xperia SP (Figure 59).



```
Ezurio Terminal, Ver 6.8.0
CTS DSR DCD RI RTS DTR BRK CAPTURE
Open [COM47:9600,N,8,1]
AT+BTW00EB2D5472E3
OK
PASSKEY? 2 00EB2D5472E3,442923
```

Figure 59: Pair with Xperia SP

The module displays the passcode 442923; the same passcode should be displayed on the phone. Users are required to compare the passcode displayed (Figure 60).

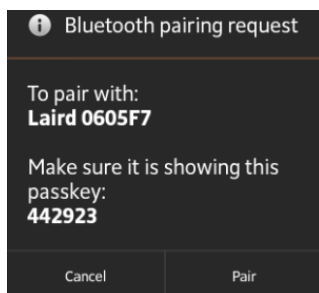
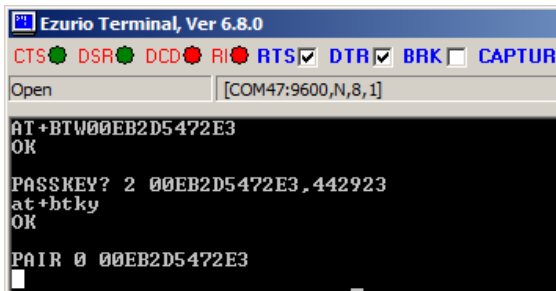


Figure 60: BT pairing request

## BT740 Development Kit

### Quick Start Guide

6. On the phone, tap **Pair** to confirm.
7. On the BT740, issue `AT+BTXY` to confirm the same passcode is showing. PAIR 0 indicates pairing is successful (Figure 61).

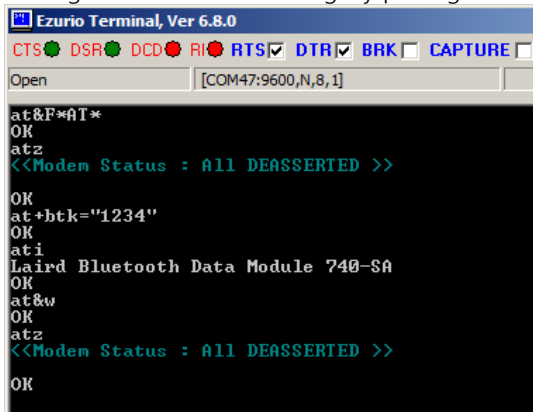


```
Ezurio Terminal, Ver 6.8.0
CTS DSR DCD RI RTS DTR BRK CAPTUR
Open [COM47:9600,N,8,1]
AT+BTW00EB2D5472E3
OK
PASSKEY? 2 00EB2D5472E3,442923
at+btky
OK
PAIR 0 00EB2D5472E3
```

Figure 61: Successful pairing

### Pair with phone equipped with BT 2.0

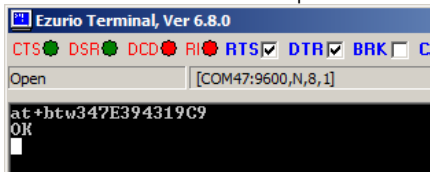
1. Configure the module for legacy pairing with below commands (Figure 62).



```
Ezurio Terminal, Ver 6.8.0
CTS DSR DCD RI RTS DTR BRK CAPTURE
Open [COM47:9600,N,8,1]
at&F*AT*
OK
atz
<<Modem Status : All DEASSERTED >>
OK
at+btw="1234"
OK
ati
Laird Bluetooth Data Module 740-SA
OK
at&w
OK
atz
<<Modem Status : All DEASSERTED >>
OK
```

Figure 62: Configuration AT commands

2. Issue below command to pair with E72 (Figure 63).



```
Ezurio Terminal, Ver 6.8.0
CTS DSR DCD RI RTS DTR BRK CAPTUR
Open [COM47:9600,N,8,1]
at+btw347E394319C9
OK
```

Figure 63: AT+BTW to pair

3. The phone prompts user to accept the pairing request (Figure 64).

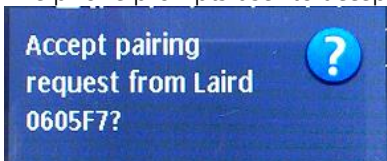


Figure 64: Accept pairing

## BT740 Development Kit

### Quick Start Guide

4. Enter the pairing code "1234"

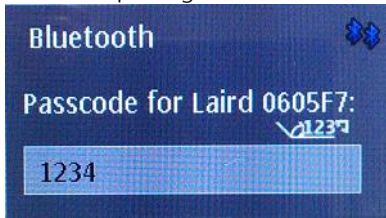


Figure 65: Enter pairing code

5. Pairing response indicates pairing is successful (Figure 66).

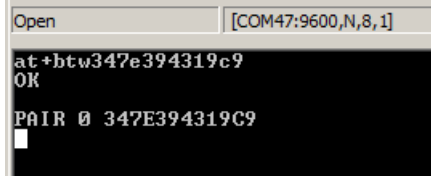


Figure 66: PAIRING is successful

## ADDITIONAL DOCUMENTATION AND RESOURCES

Laird offers a variety of documentation and ancillary information to support our customers through the initial evaluation process and ultimately into mass production. Further documentation is available from the [BT740 product page](#). They include.

- BT740 – Firmware User manual
- BT740 – Hardware Integration Guide (HIG)
- DVK-BT740 – User Manual
- DVK-BT740 – Schematics

Software is available in the software downloads tab of the BT740 page:

Laird / EZURiO terminal

The following article helps explain how to add a Bluetooth device to your Windows 7 computer:

<http://windows.microsoft.com/en-us/windows7/add-a-bluetooth-enabled-device-to-your-computer>

For any additional questions or queries, or to receive local technical support for this Development Kit or for the BT740 module series, please contact [wirelessinfo@lairdtech.com](mailto:wirelessinfo@lairdtech.com).

### REVISION HISTORY

Revision	Date	Description	Approved By
1.0	10 July 2013	Initial Release	Jonathan Kaye
1.1	16 Aug 2013	Minor edits	Sue White
1.2	7 April 2013	Formatting, revision history, footer.	Dave Drogowski