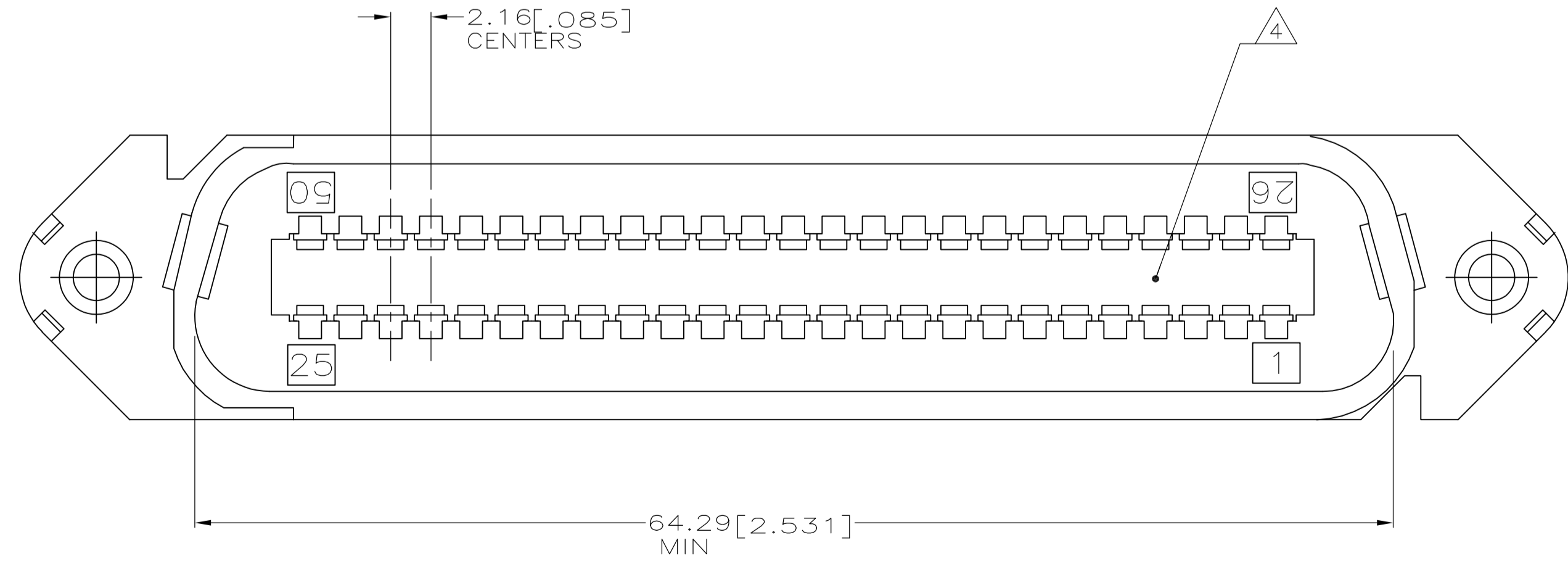
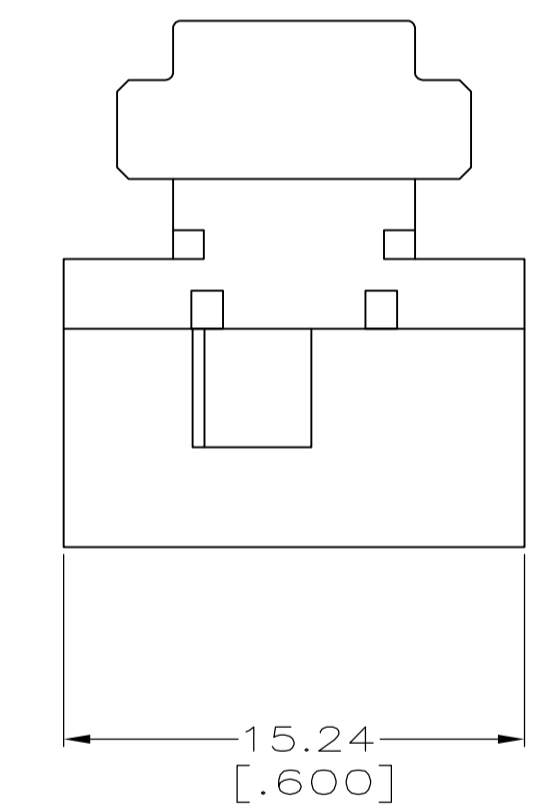
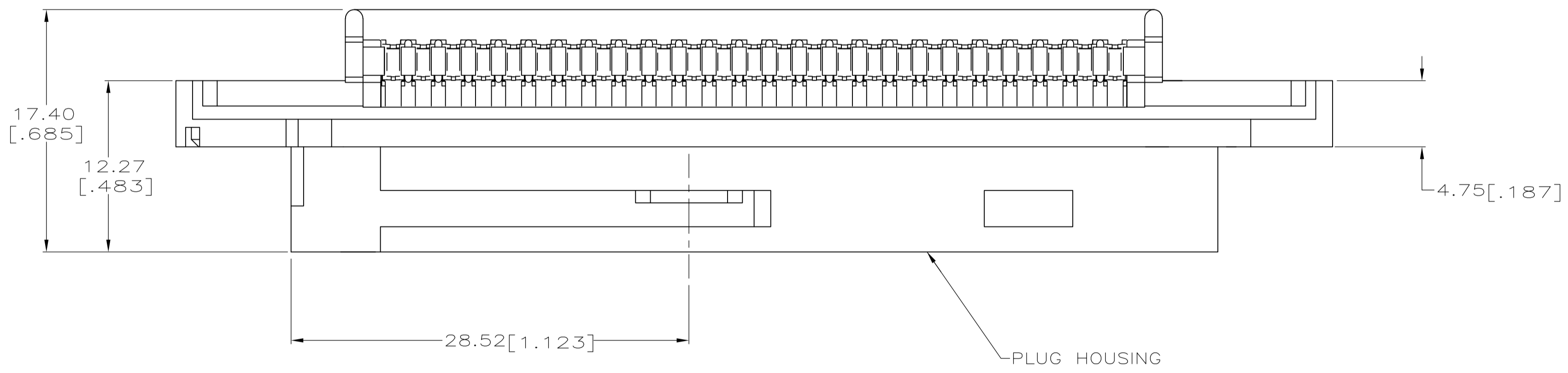
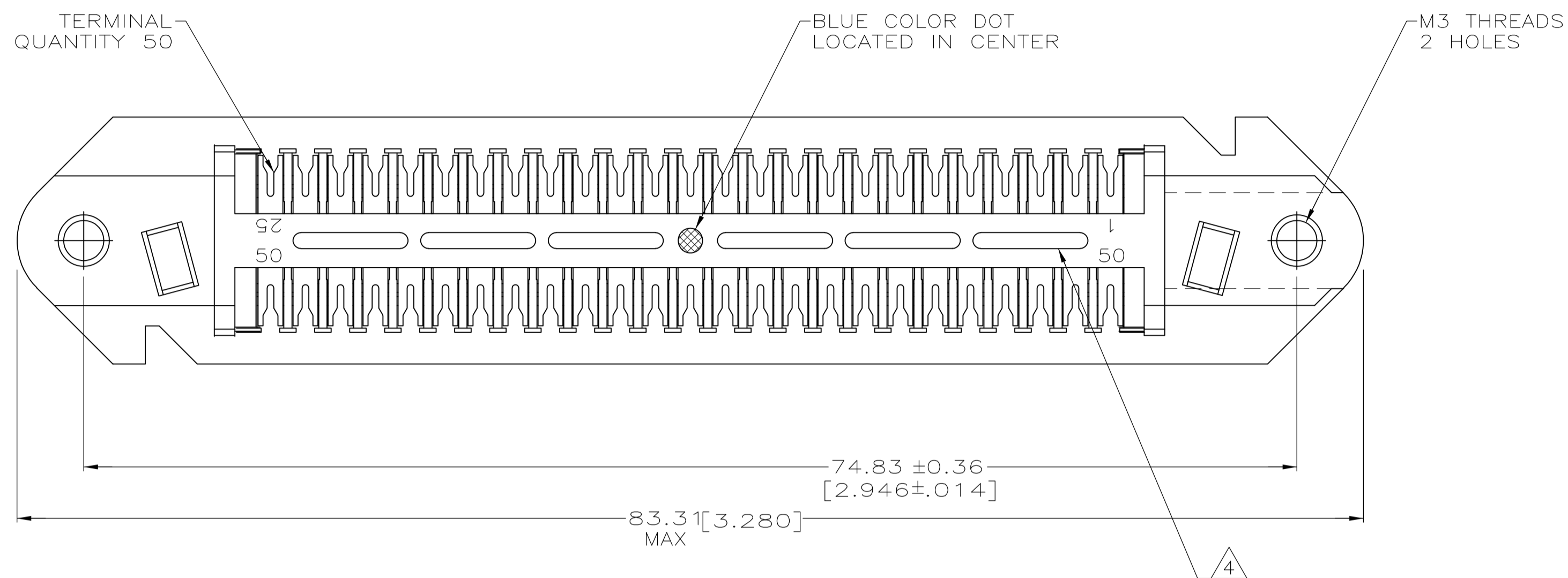


LOC		DIST		REVISIONS			
GP	00	REV	DATE	BY	CHK	APPV	
C		REVISED PER ECO-08-007327	05SEP08	BM	WM		

1. THE CONTACT SURFACES OF THE TERMINALS ARE COATED WITH LUBRICANT.
2. DIMENSIONS ARE MAXIMUM UNLESS OTHERWISE SPECIFIED.
3. MATERIAL: HOUSING - POLYPHENYLENE OXIDE, BLACK. TERMINAL - HIGH STRENGTH COPPER ALLOY PLATED WITH $0.76\mu\text{m}$ [.000030] MIN GOLD OR GOLD FLASH OVER PALLADIUM NICKEL, $0.76\mu\text{m}$ [.000030] MIN TOTAL ON MATING SURFACE, OVER $1.27\mu\text{m}$ [.000050] MIN NICKEL UNDERPLATE OF ENTIRE TERMINAL.
4. CORING MAY OR MAY NOT APPEAR AND IS AT THE DISCRETION OF AMP INCORPORATED.
5. WIRE SIZE: 24 & 26 AWG SOLID & 24 AWG 7 STRAND COPPER CONDUCTORS. MAXIMUM INSULATION DIAMETER OF 1.15[.045] IS ACCEPTABLE FOR MOST APPLICATIONS.



1116549-1
PART NUMBER

THIS DRAWING IS A CONTROLLED DOCUMENT.		DL DRUMMOND 19-MAR-99	Tyco Electronics Corporation Harrisburg, PA 17105-3608	
DIMENSIONS: mm [INCHES]		DL DRUMMOND 22-MAR-99	NAME: AM FLETCHER	
TOLERANCES UNLESS OTHERWISE SPECIFIED:		DL DRUMMOND 22-MAR-99	PRODUCT SPEC: -	
0. PLC	± -	AM FLETCHER	APPLICATION SPEC: -	
1. PLC	± -	PRODUCT SPEC: -	SIZE: A1	CAGE CODE: 00779
2. PLC	± -	APPLICATION SPEC: -	DRAWING NO: 1116549	RESTRICTED TO: -
3. PLC	± -	WEIGHT: -	SCALE: 4:1	SHEET 1 OF 1
4. PLC	± -	CUSTOMER DRAWING	REV: C	
ANGLES	± -			
FINISH	± -			