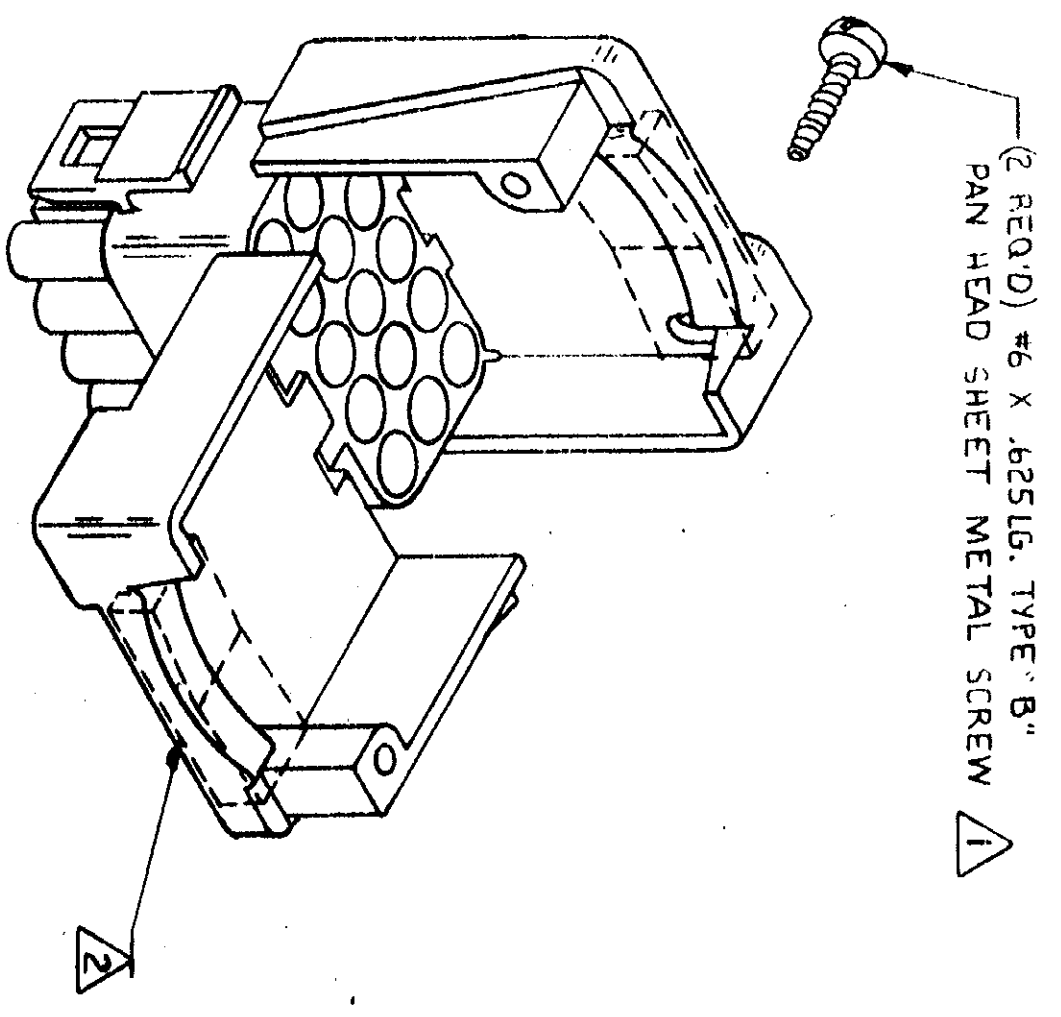
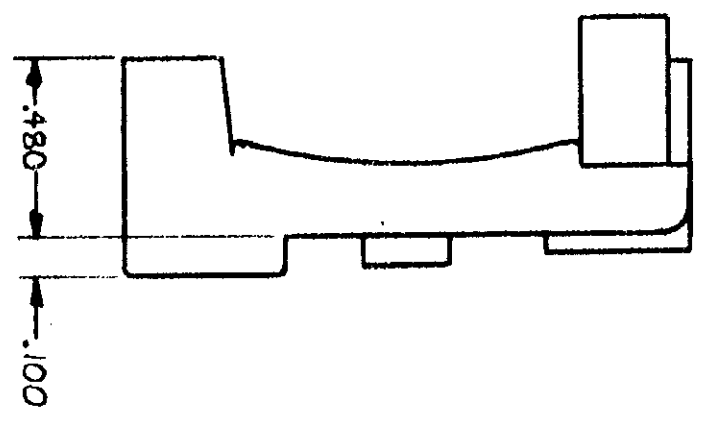
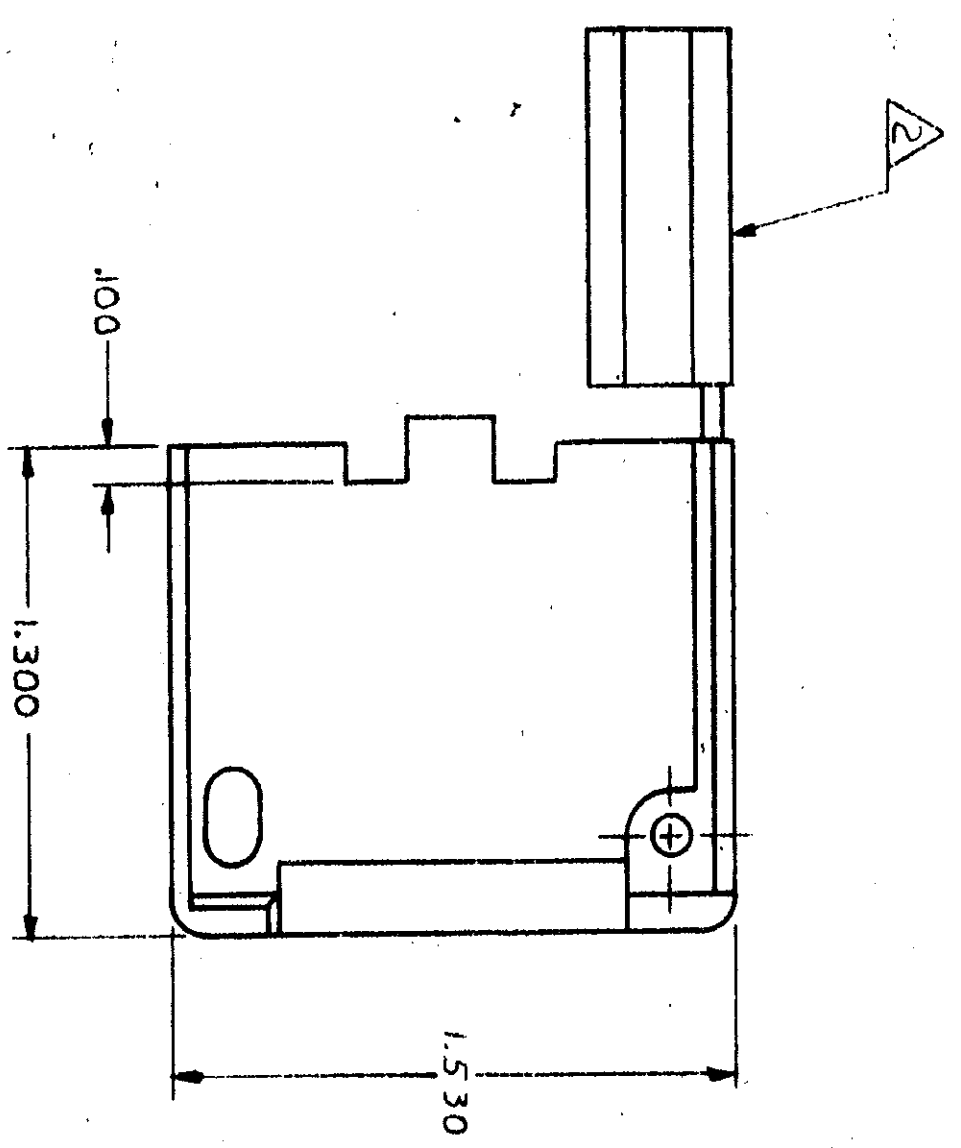
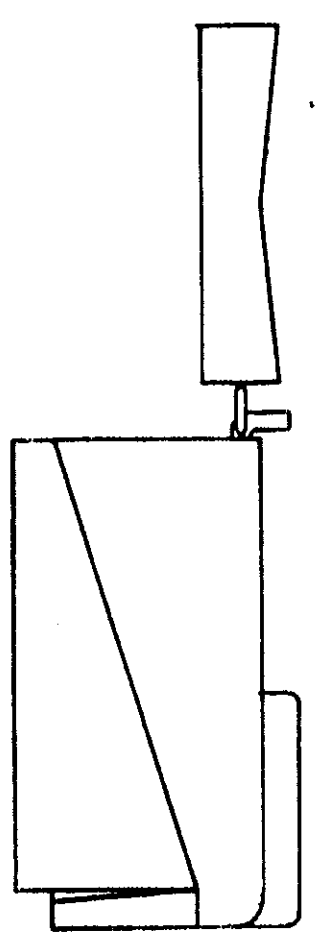


© COPYRIGHT 1978 BY AMP INCORPORATED, HARRISBURG, PA. ALL INTERNATIONAL RIGHTS RESERVED. AMP INCORPORATED PRODUCTS COVERED BY U. S. AND FOREIGN PATENTS AND/OR PATENTS PENDING.

- 1 SHEET METAL SCREWS NOT SUPPLIED.
- 2 INSERT IS ATTACHED TO STRAIN RELIEF AS AN ADDITIONAL ADJUSTMENT FOR SMALL WIRE BUNDLES; IT SHOULD BE CUT OFF AND POSITIONED AS SHOWN BY DOTTED LINES.
- 3 TWO REQUIRED PER CONNECTOR.
- 4 DETACHABLE INSERT MAY SEPARATE FROM STRAIN RELIEF BODY DURING SHIPPING.

REVISIONS		DATE	APPROVED
P	F	3-12-79	MSE/AM
✓	✓		
A	REVIS	3-22-79	AM
AI	RESTORATION	4-24-79	AM
B	REV PER ECN CM 705	10/16/81	RS



WIRE BUNDLE DIA	WITHOUT INSERT	WITH INSERT
MAX	.950	.200
M/M		

UNLESS OTHERWISE SPECIFIED DIMENSIONS ARE IN INCHES. TOLERANCES ON: DECIMALS ± .015 ANGLES		CONTRACT NO.	
MATERIAL		DR 3-12-79	
SEE TABLE		CHK D. J. FEHER	
FINISH		APPD J. S. HAZDA 3/22/79	
SEE TABLE		APPD J. S. HAZDA 3-22-79	
OTHER APPD		DSGN APPD	
NAME		MATERIAL	
STRAIN RELIEF FOR 15 CIRCUIT		NYLON 94V-2	
UNIVERSAL MATE-N-LOK™ CONNECTOR		PART NO	
SIZE CODE IDENT NO/DRAWING NO		AMP INCORPORATED	
C 00779		HARRISBURG, PA.	
SCALE 2-1		AMP	
SHEET 1 OF 1		AMP INCORPORATED	

640724