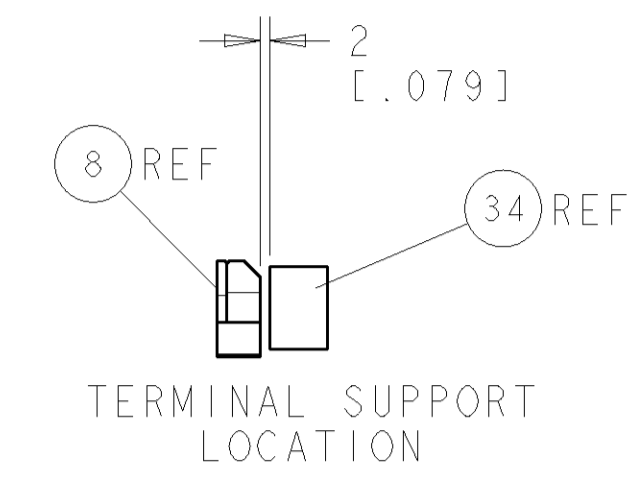
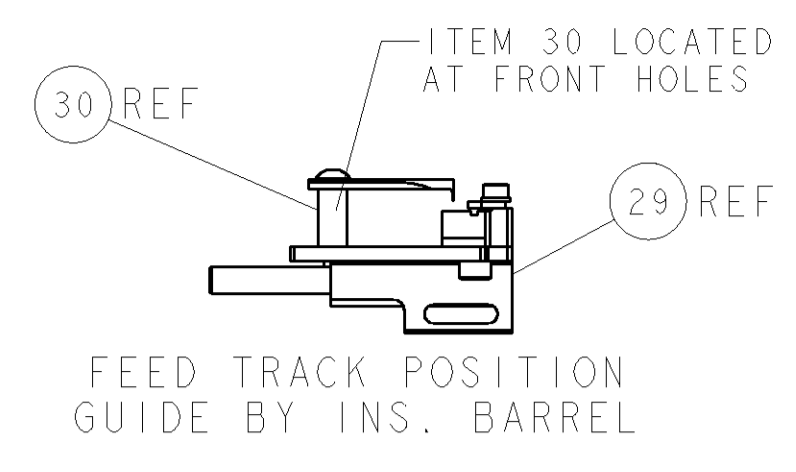
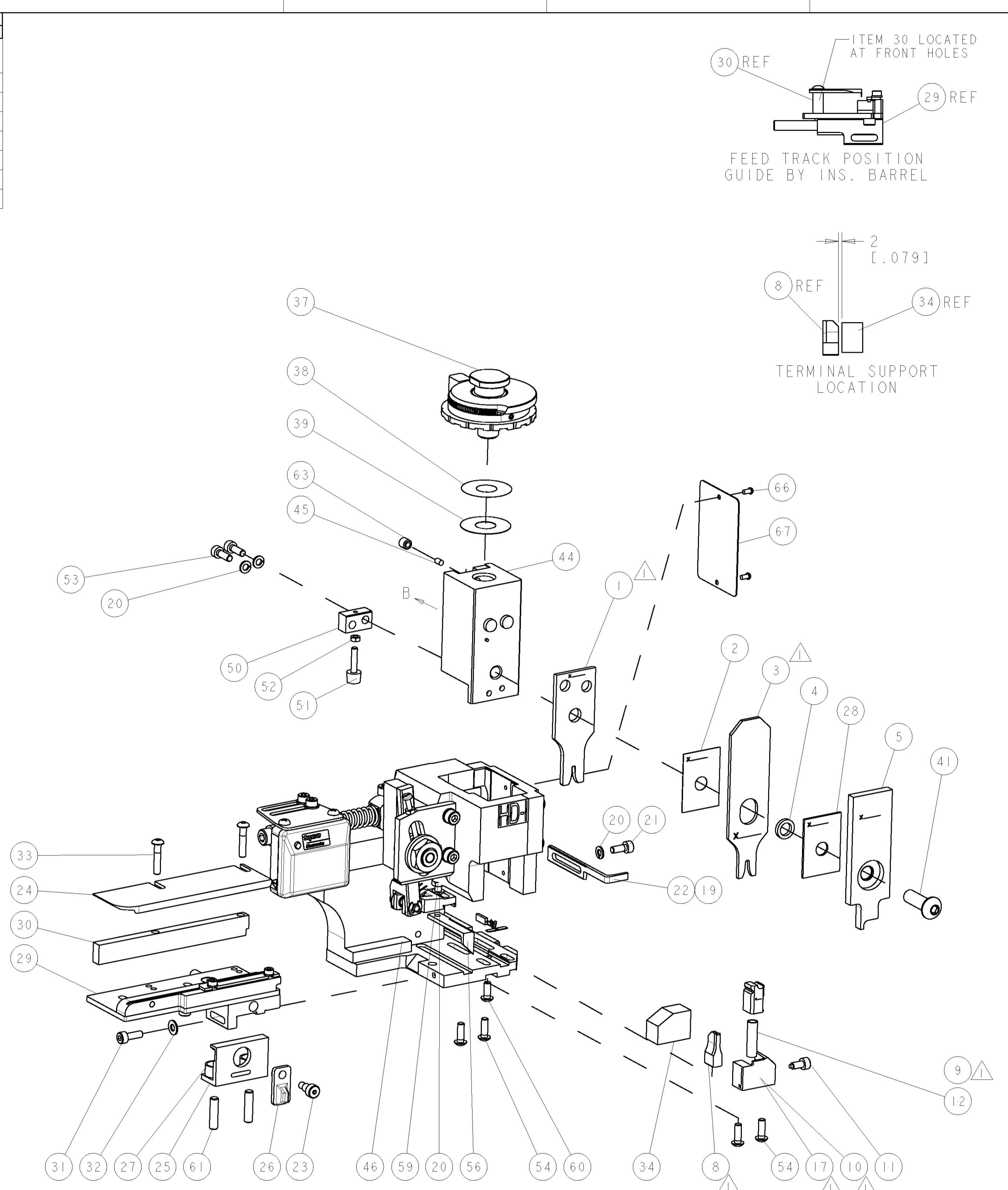
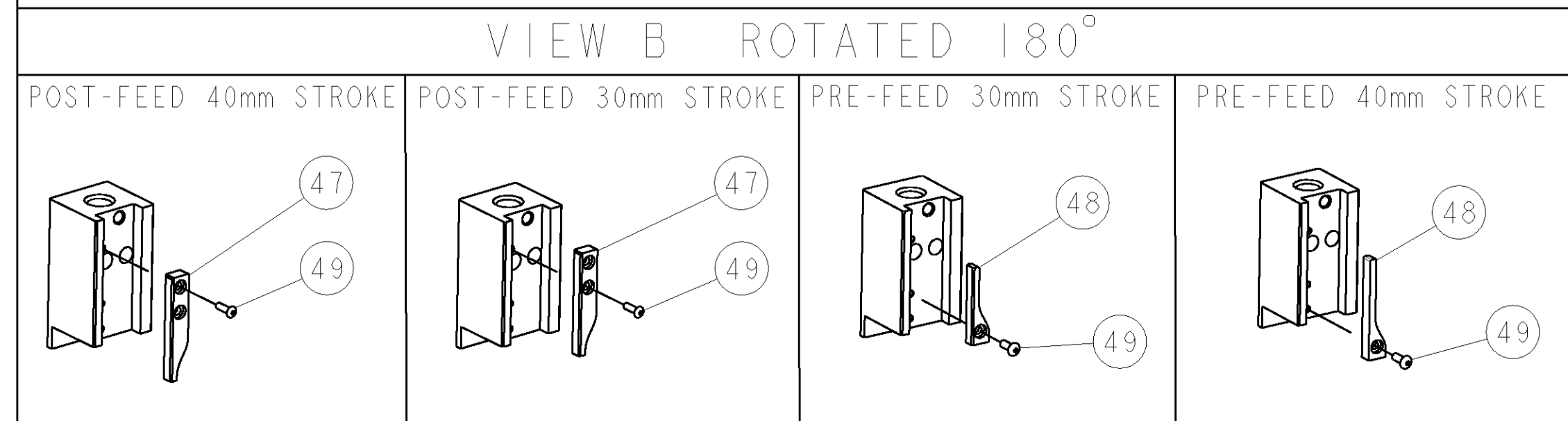


PART NUMBER	REV	TERMINATOR	FEED TYPE	DESCRIPTION
1530030-1	A	LEADMAKER	MECH POST FEED	CUTS CARRIER
1530030-2	A	BENCH	MECH PRE FEED	CUTS CARRIER
1530030-6	A	LEADMAKER	MECH POST FEED	CONTINUOUS CARRIER
7-1530030-1	A	LEADMAKER	MECH POST FEED	-1 AND SPARE PARTS
7-1530030-2	A	BENCH	MECH PRE FEED	-2 AND SPARE PARTS
7-1530030-6	A	LEADMAKER	MECH POST FEED	-6 AND SPARE PARTS
7-1530030-7	A	-	-	SPARE PARTS KIT

CRIMP DATA		FCI TERMINAL		FCI CRIMP SPECS	
TERMINAL NAME: FCI 2.8mm DCS2 FEMALE					
CRIMP	SIZE	TYPE	RANGE		
WIRE	2.08 [1.082 IN]	F	0.5-1.0mm ²		
INSUL	2.84 [1.112 IN]	0	Ø1.4-2.1 [1.055-1.083 IN]		
WIRE STRIP LENGTH 3.50-3.88 [1.138-1.153 IN]		APPL INSTRUCTIONS 408-8322 & 408-8490			
TERMINAL APPL SPEC		NONE	FEED		14.00 [1.551 IN]
TERMINALS APPLIED					
TE PN	MFR PN				
1572889	60012831				
WIRE SIZE	CRIMP HEIGHT	REF SETTING			
1.00mm ²	1.35 ± 0.05 [1.053 ± 0.002 IN]	B-6			
0.75mm ²	1.27 ± 0.05 [1.050 ± 0.002 IN]	C-1			
0.50mm ²	1.20 ± 0.05 [1.047 ± 0.002 IN]	C-7			

- RECOMMENDED SPARE PARTS.
- GREASE RAM, CAM, CAM FOLLOWER AND FEED ROD LIGHTLY.
- CERTAIN TERMINALS REQUIRE LUBRICATION. REFER TO THE APPLICATOR INSTRUCTION SHEET FOR MORE INFORMATION.
- LUBRICATE DAILY PER THE APPLICATOR INSTRUCTION SHEET SUPPLIED WITH THE APPLICATOR.

*** WARNING**
ON INSTALLATION, SET WIRE DISC TO LARGEST WIRE SIZE SETTING. USE OF SETTINGS BELOW MIN. REQUIRED CRIMP HEIGHT SETTING WILL CAUSE DAMAGE TO CRIMP TOOLING.



PART NO	DESCRIPTION	ITEM NO
-77	-76	-72
-71	-6	-2
-1		
		84
		83
		82
		81
		80
		79
		78
		77
		76
		75
		74
PART NO	DESCRIPTION	ITEM NO

SET UP GAGE
458637-3

REV	DESCRIPTION	DATE	BY	CHK
1	DEVELOPMENT	16JAN2009	RS	MEH
A	RELEASED	12FEB2009	MEH	GB

REV	DESCRIPTION	DATE	BY	CHK	ITEM NO
-	-	-	-	-	73
-	-	-	-	-	72
-	-	-	-	-	71
-	-	-	-	-	70
-	-	-	-	-	69
-	-	-	-	-	68
-	-	-	-	-	67
-	-	-	-	-	66
-	-	-	-	-	65
-	-	-	-	-	64
-	-	-	-	-	63
-	-	-	-	-	62
-	-	-	-	-	61
-	-	-	-	-	60
-	-	-	-	-	59
-	-	-	-	-	58
-	-	-	-	-	57
-	-	-	-	-	56
-	-	-	-	-	55
-	-	-	-	-	54
-	-	-	-	-	53
-	-	-	-	-	52
-	-	-	-	-	51
-	-	-	-	-	50
-	-	-	-	-	49
-	-	-	-	-	48
-	-	-	-	-	47
-	-	-	-	-	46
-	-	-	-	-	45
-	-	-	-	-	44
-	-	-	-	-	43
-	-	-	-	-	42
-	-	-	-	-	41
-	-	-	-	-	40
-	-	-	-	-	39
-	-	-	-	-	38
-	-	-	-	-	37
-	-	-	-	-	36
-	-	-	-	-	35
-	-	-	-	-	34
-	-	-	-	-	33
-	-	-	-	-	32
-	-	-	-	-	31
-	-	-	-	-	30
-	-	-	-	-	29
-	-	-	-	-	28
-	-	-	-	-	27
-	-	-	-	-	26
-	-	-	-	-	25
-	-	-	-	-	24
-	-	-	-	-	23
-	-	-	-	-	22
-	-	-	-	-	21
-	-	-	-	-	20
-	-	-	-	-	19
-	-	-	-	-	18
-	-	-	-	-	17
-	-	-	-	-	16
-	-	-	-	-	15
-	-	-	-	-	14
-	-	-	-	-	13
-	-	-	-	-	12
-	-	-	-	-	11
-	-	-	-	-	10
-	-	-	-	-	9
-	-	-	-	-	8
-	-	-	-	-	7
-	-	-	-	-	6
-	-	-	-	-	5
-	-	-	-	-	4
-	-	-	-	-	3
-	-	-	-	-	2
-	-	-	-	-	1
REV	DESCRIPTION	DATE	BY	CHK	ITEM NO

DIMENSIONS: mm [IN]		TOLERANCES UNLESS OTHERWISE SPECIFIED:	
3 PLC	±	3	±
4 PLC	±	4	±
5 PLC	±	5	±
6 PLC	±	6	±
7 PLC	±	7	±
8 PLC	±	8	±
9 PLC	±	9	±
10 PLC	±	10	±
11 PLC	±	11	±
12 PLC	±	12	±
13 PLC	±	13	±
14 PLC	±	14	±
15 PLC	±	15	±
16 PLC	±	16	±
17 PLC	±	17	±
18 PLC	±	18	±
19 PLC	±	19	±
20 PLC	±	20	±
21 PLC	±	21	±
22 PLC	±	22	±
23 PLC	±	23	±
24 PLC	±	24	±
25 PLC	±	25	±
26 PLC	±	26	±
27 PLC	±	27	±
28 PLC	±	28	±
29 PLC	±	29	±
30 PLC	±	30	±
31 PLC	±	31	±
32 PLC	±	32	±
33 PLC	±	33	±
34 PLC	±	34	±
35 PLC	±	35	±
36 PLC	±	36	±
37 PLC	±	37	±
38 PLC	±	38	±
39 PLC	±	39	±
40 PLC	±	40	±
41 PLC	±	41	±
42 PLC	±	42	±
43 PLC	±	43	±
44 PLC	±	44	±
45 PLC	±	45	±
46 PLC	±	46	±
47 PLC	±	47	±
48 PLC	±	48	±
49 PLC	±	49	±
50 PLC	±	50	±
51 PLC	±	51	±
52 PLC	±	52	±
53 PLC	±	53	±
54 PLC	±	54	±
55 PLC	±	55	±
56 PLC	±	56	±
57 PLC	±	57	±
58 PLC	±	58	±
59 PLC	±	59	±
60 PLC	±	60	±
61 PLC	±	61	±
62 PLC	±	62	±
63 PLC	±	63	±
64 PLC	±	64	±
65 PLC	±	65	±
66 PLC	±	66	±
67 PLC	±	67	±
68 PLC	±	68	±
69 PLC	±	69	±
70 PLC	±	70	±
71 PLC	±	71	±
72 PLC	±	72	±
73 PLC	±	73	±
74 PLC	±	74	±
75 PLC	±	75	±
76 PLC	±	76	±
77 PLC	±	77	±
78 PLC	±	78	±
79 PLC	±	79	±
80 PLC	±	80	±
81 PLC	±	81	±
82 PLC	±	82	±
83 PLC	±	83	±
84 PLC	±	84	±