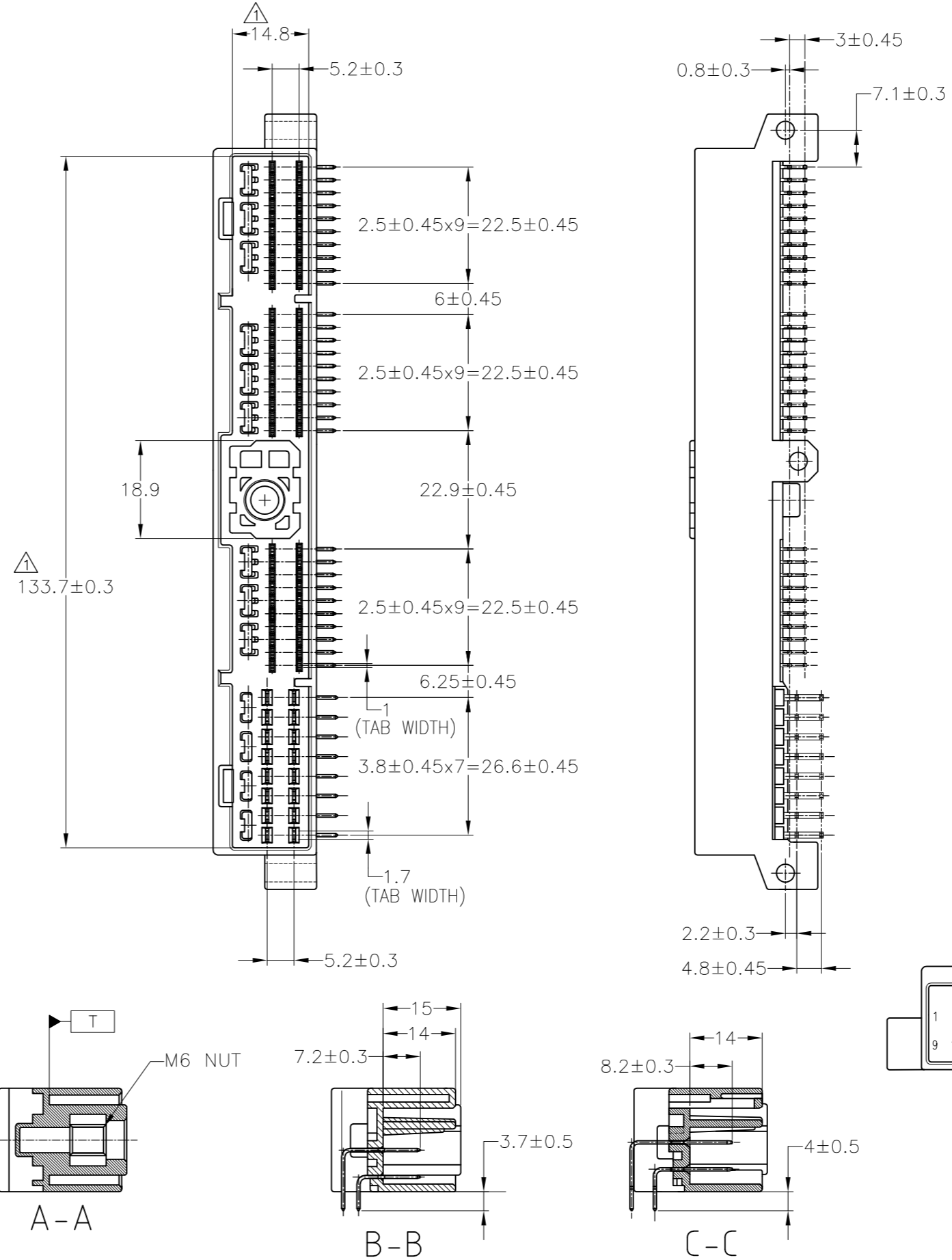
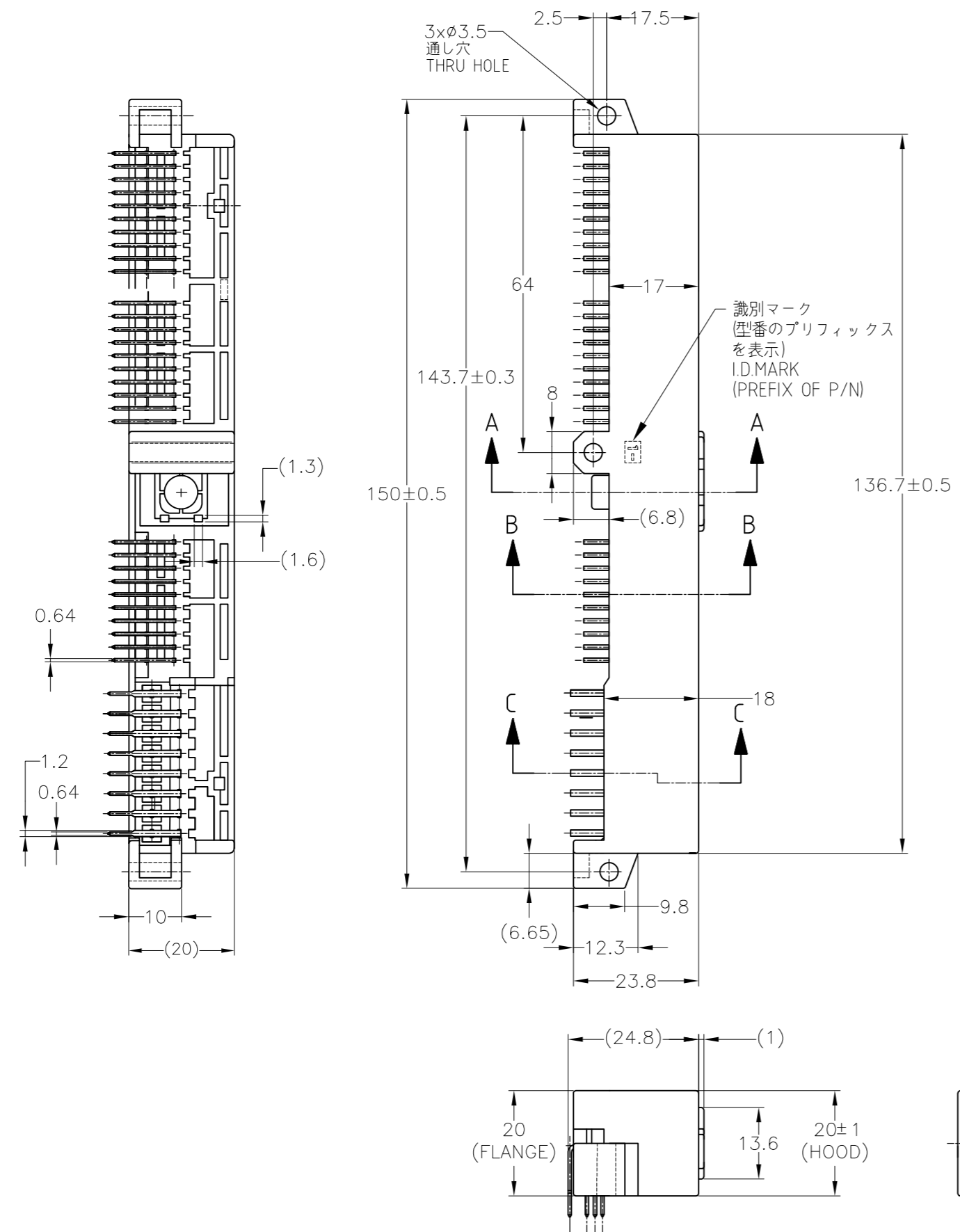
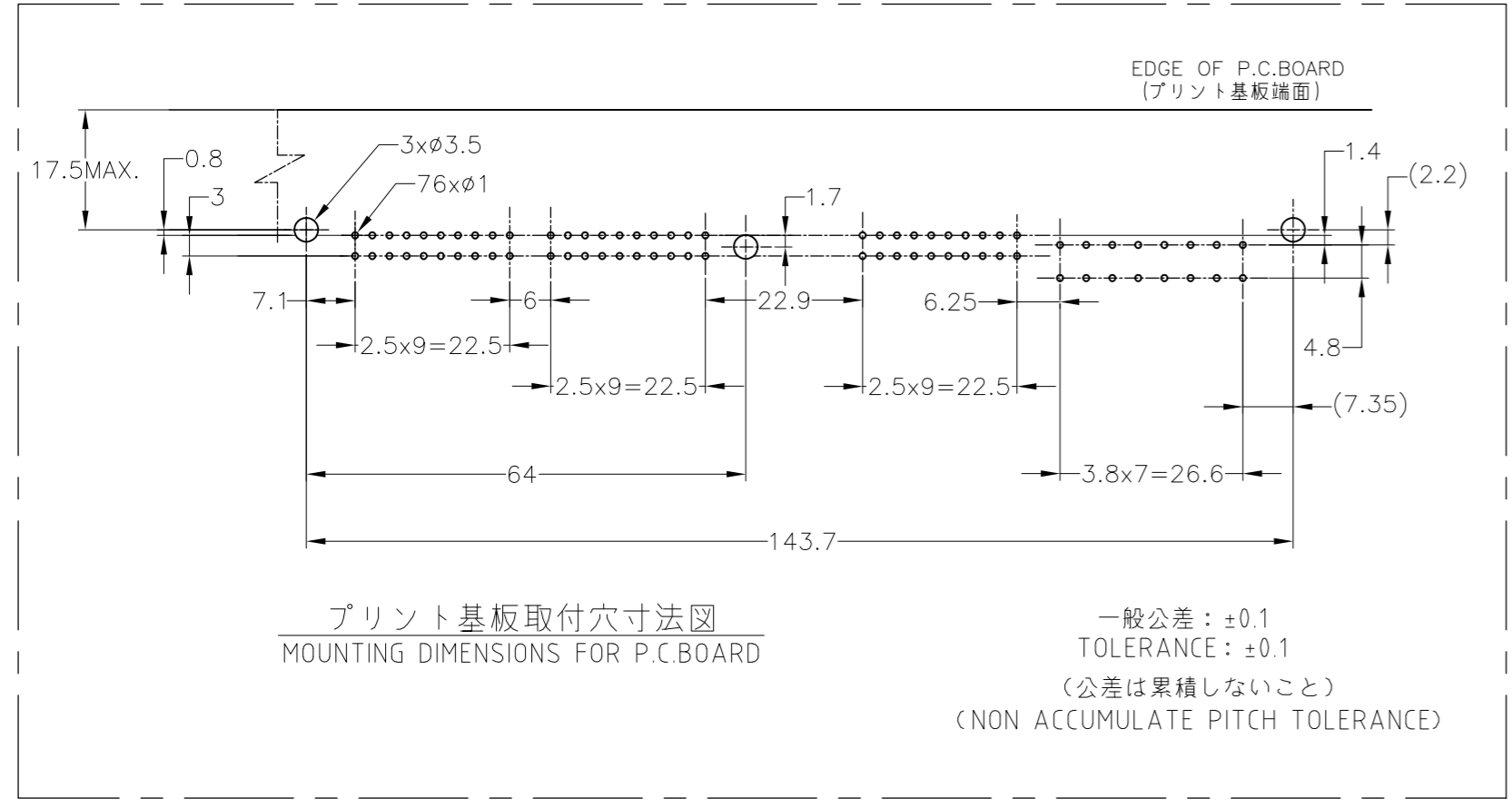
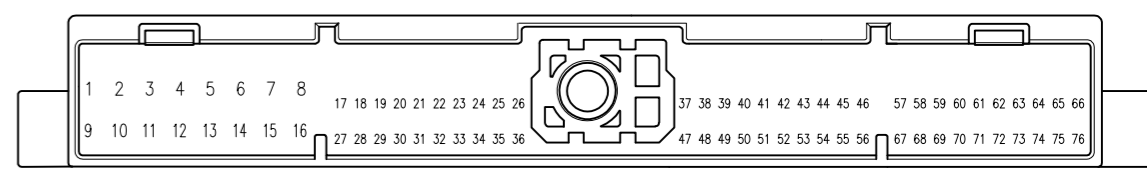


THIS DRAWING IS UNPUBLISHED. RELEASED FOR PUBLICATION
 © COPYRIGHT 2016 Tyco Electronics Japan G.K. ALL RIGHTS RESERVED.

REVISIONS					
P	LTR	DESCRIPTION	DATE	DWN	APVD
M4	OBSOLETE -5	ECR-16-003196	17AUG16	KF	HY



- △ T 面より2mmの範囲で測定
- 2. 適用プリント基板厚: 1.6mm
- 3. 推奨取付ネジ: 呼び3mmの小ネジ
又は 呼び4mmのタッピングネジ
- △ 全面ニッケルメッキ上に接触部分は金メッキ
ハンダ付部分は、ハンダメッキ
- △ 金めっき位置 (下図参照)
- △ TO BE MEASURED WITHIN 2mm FROM T
- 2. APPLICABLE P.C BOARD THICKNESS: 1.6mm
- 3. RECOMMENDED MOUNTING SCREW: 3mm DIA.
SMALL SCREW & NUT OR 4mm DIA. TAPPING SCREW.
- △ GOLD PLATING FOR CONTACT AREA AND TIN-LEAD
PLATING FOR SOLDERING AREA OVER ALL-OVER
NICKEL PLATING.
- △ GOLD TAB POSITIONS



7-5179932-5	---	SELECTIVE-TIN (MATTE)	SELECTIVE GOLD × 6	PRE-TIN × 16	43,51,53,54,57,71	BLUE 青色	7-5174385-5
---	---	---	PRE-TIN × 54	PRE-TIN × 16	17~76	BLUE 青色	5174385-5
7-179932-5	---	SELECTIVE-TIN (MATTE)	SELECTIVE GOLD × 60	PRE-TIN × 16	43,51,53,54,57,71	BLUE 青色	7-174385-5
---	---	TIN-LEAD	SELECTIVE GOLD × 6	PRE-TIN × 16	42~46,50,51,53,54,57,58,71,72,74	BLUE 青色	6-174385-5
OBSOLETE	6-179932-5	---	PRE-TIN × 54	PRE-TIN × 16	42~46,50,51,53,54,57,58,71,72,74	NATURAL 自然色	6-174385-1
OBSOLETE	6-179932-1	6-178997-1	TIN-LEAD	PRE-TIN × 16	---	BLUE 青色	5-174385-5
OBSOLETE	---	5-178997-5	PRE-TIN × 46	PRE-TIN × 16	---	BLUE 青色	4-174385-5
OBSOLETE	---	4-178997-5	PRE-TIN × 60	PRE-TIN × 16	42~46,50,51,53,54,57,58,67,68,71,72,74	BLUE 青色	3-174385-5
OBSOLETE	---	3-178997-5	SELECTIVE-TIN	PRE-TIN × 16	42~46,53,54,57,58,67,68,71,72,74	BLUE 青色	174385-5
OBSOLETE	---	178997-5	TIN-LEAD	PRE-TIN × 16	17~76	BLUE 青色	---

通い箱入品 (プラスチック箱) CIRCULATE BOX	プラスチックトレー梱包品 (PACKING FORM BLISTER)	SOLDERING SIDE 半田付け部 CONTACT FINISH (0.0 TAB) コンタクト仕上	CONTACT SIDE 接触部側 CONTACT FINISH (0.7 TAB) コンタクト仕上	SOLDERING SIDE 半田付け部	CONTACT SIDE 接触部側	GOLD PLATED CIRCUIT NO. 金めっき回路番号	COLOR 色	PART NUMBER 製品型番
THIS DRAWING IS A CONTROLLED DOCUMENT.				DWN 21MAY2015 K.FURUYAMA	TE Connectivity			
DIMENSIONS: 単位: 寸 mm				CHK 21MAY2015 Y.MITO	NAME 名称			
TOLERANCES UNLESS OTHERWISE SPECIFIED 一般公差				APVD 21MAY2015 R.KOMIYAMA	040 SERIES CENTER LOCK CONNECTOR 76POSITION CAP HOUSING ASSEMBLY			
0 PLC ±				PRODUCT SPEC 製品規格	SIZE CAGE CODE DRAWING NO 番号			
1 PLC ±				APPLICATION SPEC 取付適用規格	A2 00779 C=174385			
2 PLC ±				WEIGHT 40.1 g	RESTRICTED TO			
3 PLC ±				CUSTOMER DRAWING	SCALE 1:1 SHEET 1 of 1 REV M4			
4 PLC ±								
ANGLES ±								
FINISH 仕上								
SEE TABLE								