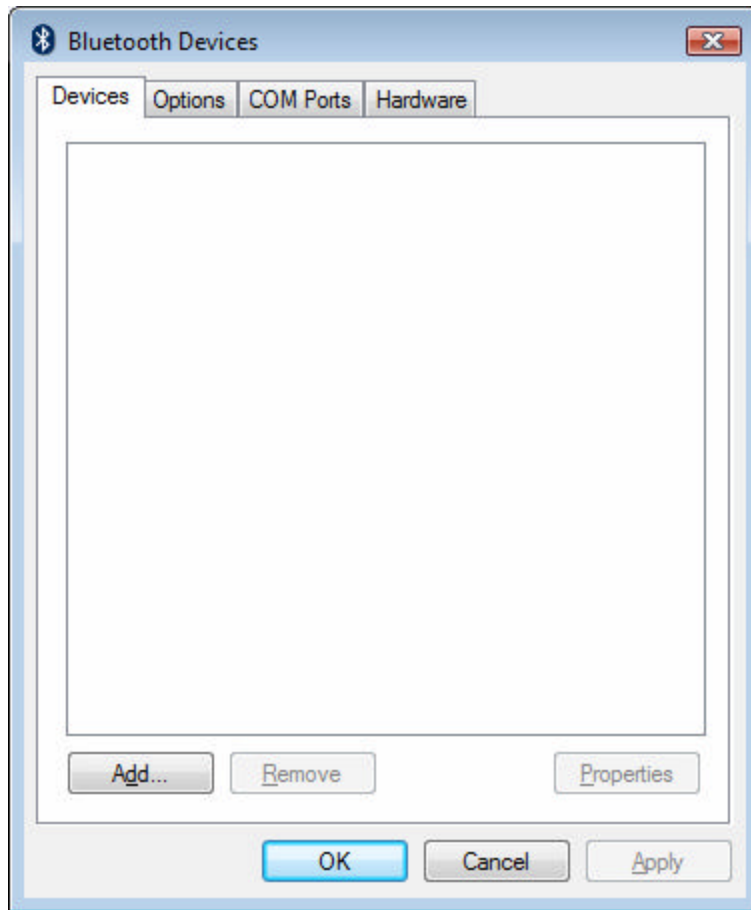


RN-USB-T quick install for Microsoft Native Bluetooth Stack (WINXP/SP2 and VISTA)

Double click on the Bluetooth icon in the system tray

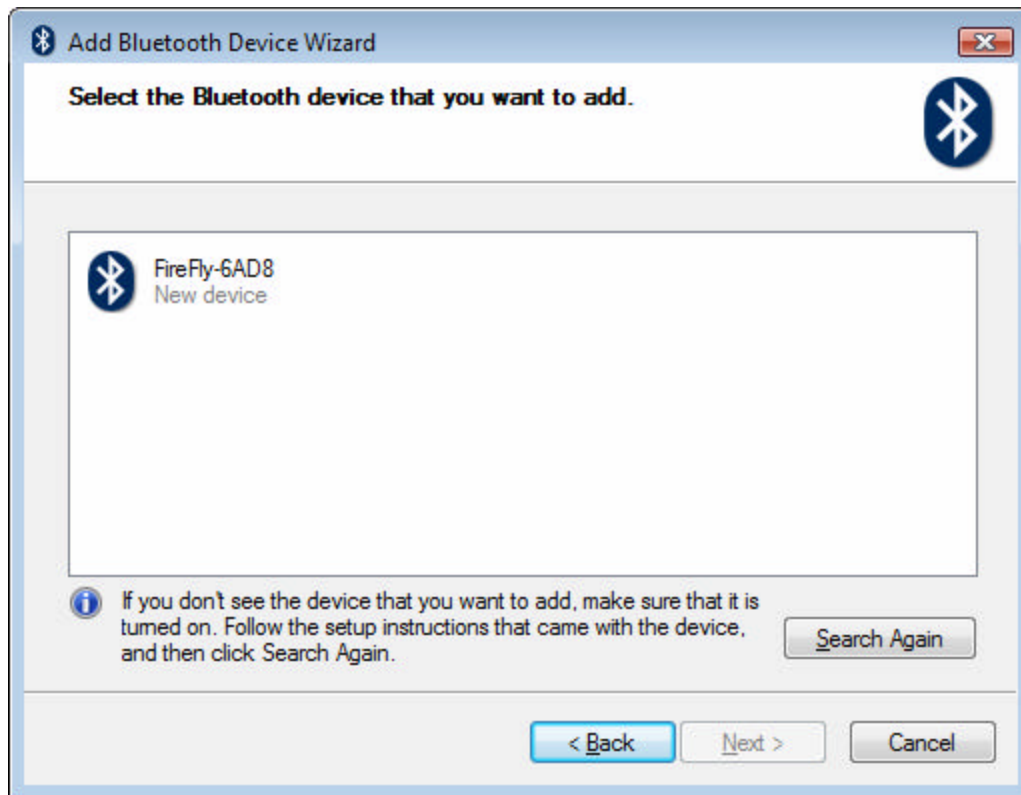


On the Devices tab, click on the Add button

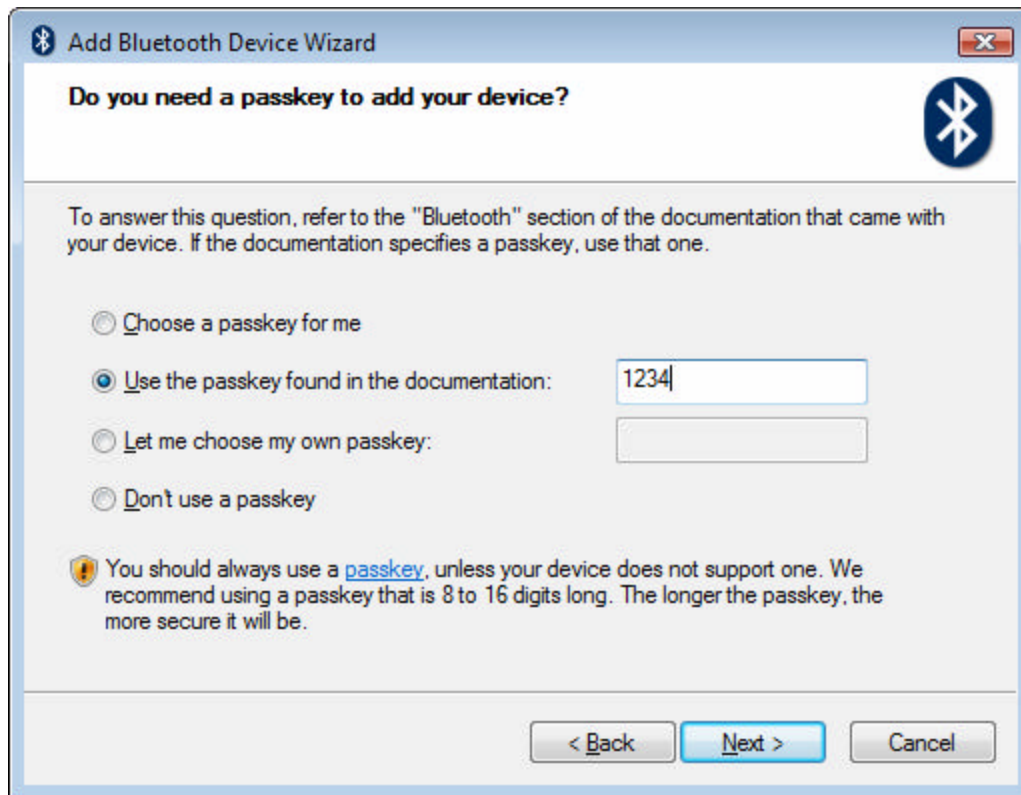


Power up the FireFly device.

Check the "My device is setup and ready to be found" option and click on the Next button



Select the FireFly device and click on the Next button



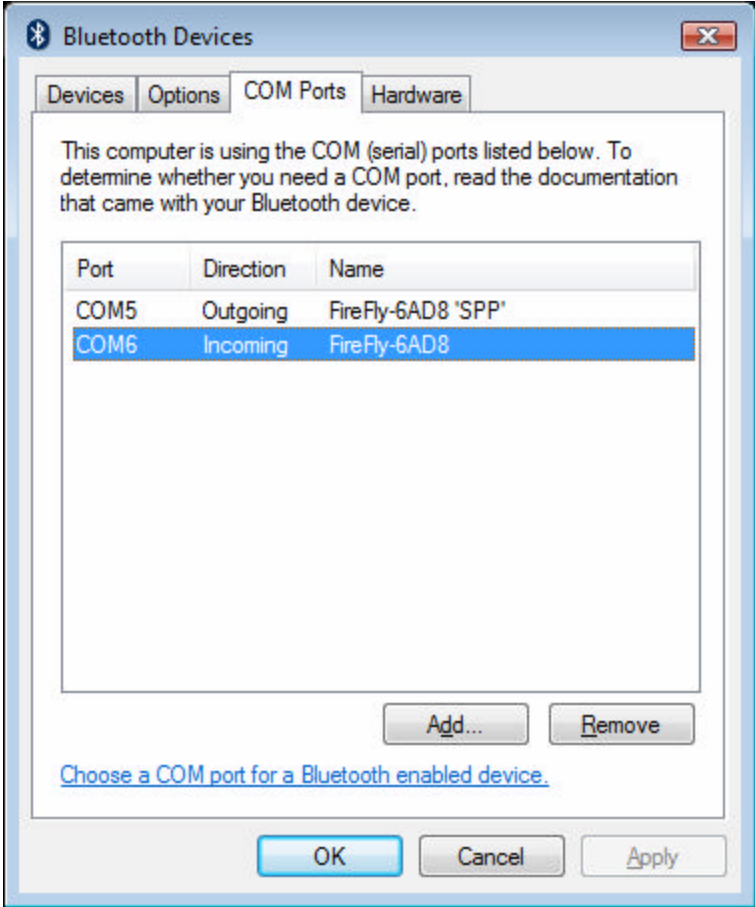
Select the "Use the passkey found in the documentation"

Enter 1234 as the passkey and click on the Next button



Click on the Finish button

Go to the COM Ports tab of the Bluetooth Devices screen



Select the Incoming port and click on Remove (this port is not needed)

Click on the OK button

Check the Device Manager, to see the COM port appears to be installed correctly.

