

## Printed-circuit board connector - BCH-500H- 4 - 5431961

Please be informed that the data shown in this PDF Document is generated from our Online Catalog. Please find the complete data in the user's documentation. Our General Terms of Use for Downloads are valid (<http://download.phoenixcontact.com>)


Header, Nominal current: 12 A, Rated voltage (III/2): 320 V, Number of positions: 4, Pitch: 5 mm, Color: Signal gray, Contact surface: Tin, Assembly: Soldering



The figure shows a 5-pos. version of the product



### Key commercial data

Packing unit	1 PCE
Minimum order quantity	100 PCE
GTIN	 4 046356 326711
Custom tariff number	85366990
Country of origin	CHINA

### Technical data

#### Dimensions

Length	12 mm
Pitch	5 mm
Dimension a	15 mm
Pin dimensions	1 x 1 mm
Hole diameter	1.4 mm

#### General

Range of articles	BCH-H
Insulating material group	I
Rated surge voltage (III/3)	4 kV
Rated surge voltage (III/2)	4 kV
Rated surge voltage (II/2)	4 kV

# Printed-circuit board connector - BCH-500H- 4 - 5431961

## Technical data

### General

Rated voltage (III/3)	250 V
Rated voltage (III/2)	320 V
Rated voltage (II/2)	400 V
Connection in acc. with standard	EN-VDE
Nominal current I <sub>N</sub>	12 A
Maximum load current	12 A
Insulating material	PA
Inflammability class according to UL 94	V0
Color	Signal gray
Nominal voltage, UL/CUL Use Group B	250 V
Nominal current, UL/CUL Use Group B	12 A
Nominal voltage, UL/CUL Use Group D	300 V
Nominal current, UL/CUL Use Group D	12 A
Number of positions	4

## Classifications

### ETIM

ETIM 3.0	EC001121
ETIM 4.0	EC002637
ETIM 5.0	EC002637

### UNSPSC

UNSPSC 11	39121432
UNSPSC 12.01	39121409
UNSPSC 13.2	39121432
UNSPSC 6.01	30211801
UNSPSC 7.0901	39121432

### eCl@ss

eCl@ss 4.0	272607xx
eCl@ss 4.1	27260701
eCl@ss 5.0	27260701
eCl@ss 5.1	27260701
eCl@ss 6.0	27261101
eCl@ss 7.0	27440401

# Printed-circuit board connector - BCH-500H- 4 - 5431961

## Approvals

### Approvals

---

Approvals

UL Recognized / cUL Recognized / cULus Recognized

---


Ex Approvals


---


Approvals submitted

---

### Approval details

UL Recognized 		
	B	D
Nominal current I <sub>N</sub>	12 A	12 A
Nominal voltage U <sub>N</sub>	250 V	150 V

cUL Recognized 		
	B	D
Nominal current I <sub>N</sub>	12 A	12 A
Nominal voltage U <sub>N</sub>	250 V	150 V

cULus Recognized 		
--	--	--

## Accessories

Accessories

Assembly

## Printed-circuit board connector - BCH-500H- 4 - 5431961

### Accessories

Accessories - MSTB-BL - 1755477



Keying cap, for forming sections, plugs onto header pin, green insulating material

---

### Marking

Marker cards - SK 5/3,8:FORTL.ZAHLEN - 0804183



Marker cards, Card, white, labeled, Horizontal: Consecutive numbers 1 - 10, 11 - 20, etc. up to 91 - (99)100, Mounting type: Adhesive, For terminal block width: 5 mm

---

Marker cards - SK U/3,8 WH:UNBEDRUCKT - 0803906



Marker cards, Sheet, white, Unlabeled, Can be labeled with: Plotter, Office printing systems, Mounting type: Adhesive, Lettering field: 186 x 3.8 mm

---

Coding section - CR-BC-M - 5436157

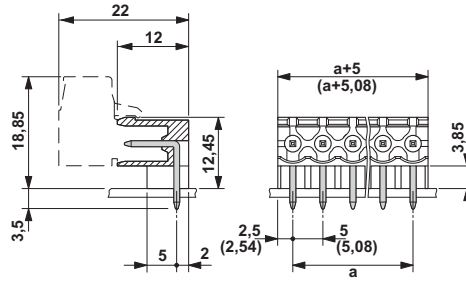
Coding section



### Drawings

# Printed-circuit board connector - BCH-500H- 4 - 5431961

Dimensioned drawing



# Printed-circuit board connector - BCH-500H- 4 - 5431961

Drilling diagram

