

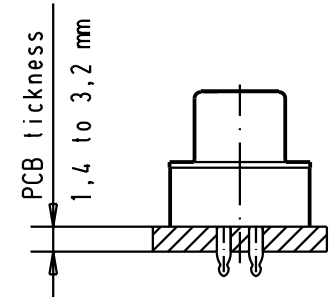
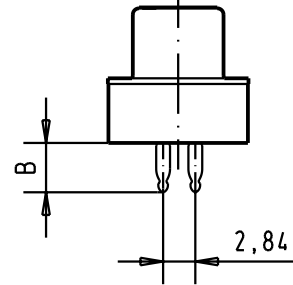
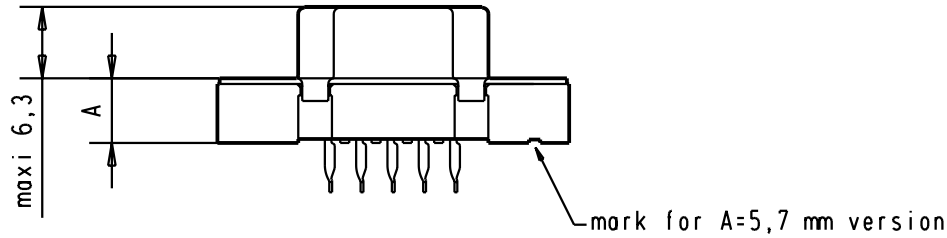
5

4

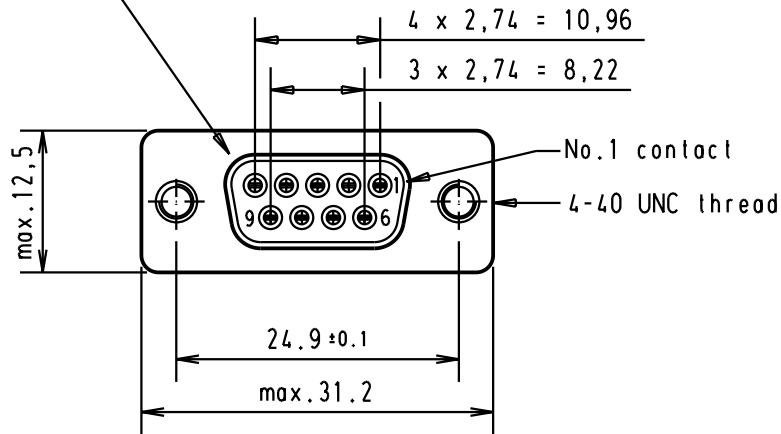
3

2

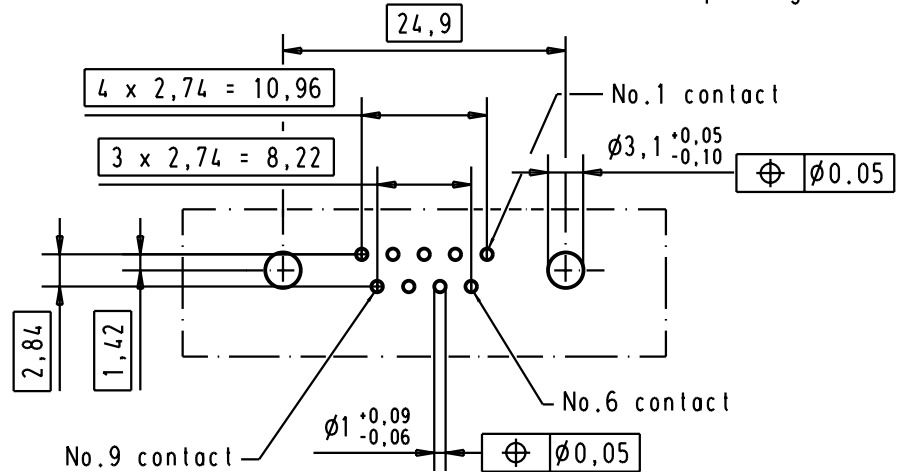
1



Mating face according to : MIL-C-24308 / DIN 41652 / CECC 75301-802

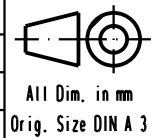


PCB layout hole component side ( PCB holes plating : Tin )



09661147502	3	6	4.20								
09661146502	2	6	4.20								
09661145502	0.76 $\mu\text{m Au}$	6	4.20								
09661147506	3	5.7	4.35	31079	29-AUG-02	CV					
09661146506	2	5.7	4.35	27980	05/03/01	jfb					
09661145506	0.76 $\mu\text{m Au}$	5.7	4.35	16236	30/06/95	jfb					
Part number	Performance level	A ± 0.2	B ± 0.2	Mod.	Dat.	Name					

	Dat.	Name
Detail.	30/03/94	jfb
Insp.		
Stand.		



D-Sub 09 poles straight female connector with press-in termination, version nut.

Moßstab/  
Scale  
2,5:1

HARTING EURL  
F-95972 Paris



TB 0966114x50x

Blatt/ Page  
3

Sub.