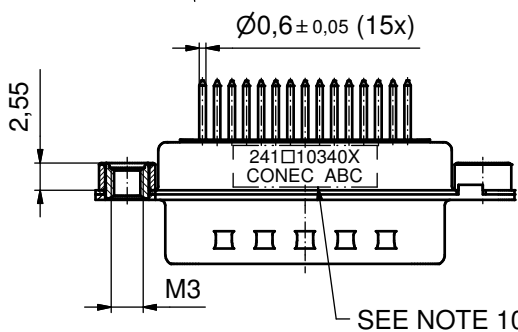
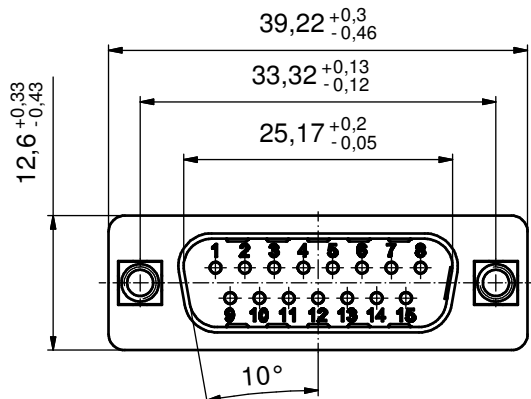
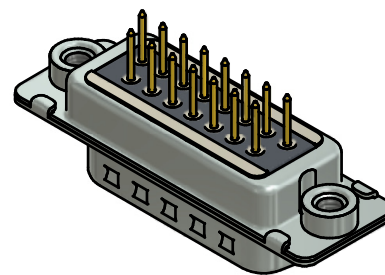
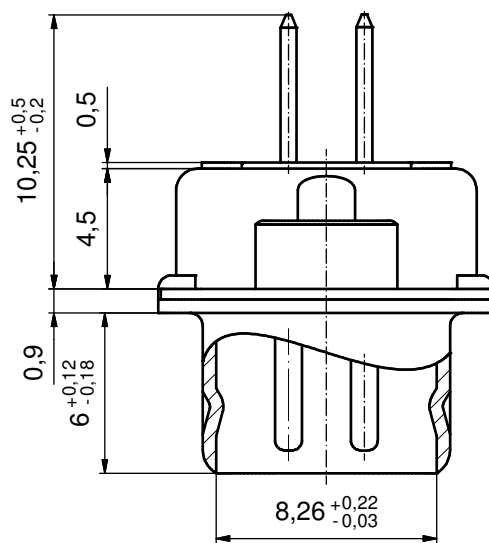
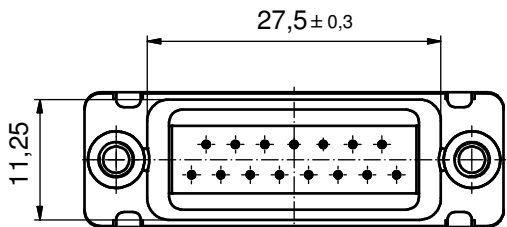


P.C.B. HOLE DRILLINGS
(P.C.B. TOP SIDE)

(5 : 1)



SEE NOTE 10



NOTES:

- FOR WAVESOLDERING (SOLDER BATH TEMPERATURE 260 °C FOR 5 SEC. AND SOLDER PREHEAT 100 °C FOR 30 SEC.)
- METALSHELLS: STEEL; min. 315µm TIN over 40-80µm NICKEL
- INSULATOR: HIGH TEMPERATURE PLASTIC UL 94 V-0, BLACK
- CONTACTS: COPPER ALLOY; PLATING (SEE PART NO.):
 PLEASE ADD A for GOLD FLASH over NICKEL (PREFERRED TYPE)
 PLEASE ADD B for 20µm HARD GOLD over min. 50µm NICKEL
 PLEASE ADD C for 30µm HARD GOLD over min. 50µm NICKEL
 CONTACTS TAILS PRETINNED
- THREADED INSERTS: COPPER ALLOY; min. 200µm TIN over 80µm NICKEL
- COLLARS: COPPER ALLOY; min 200µm TIN over 80µm NICKEL
- DIELECTRIC WITHSTANDING VOLTAGE: 424 VDC
- CAPACITANCE: 830pF ± 20%
- MAXIMUM TORQUE VALUE FOR THREAD: 6 in. LB
- CONNECTOR IS PART MARKED: 241□10340X CONEC ABC (see note 4)

Directive 2002/95/EC RoHS compliant

THIS DRAWING MAY NOT BE COPIED OR REPRODUCED IN ANY WAY, AND MAY NOT BE PASSED ON TO A THIRD PARTY WITHOUT WRITTEN PERMISSION. OWNERSHIP AND COPYRIGHT OF CONEC GmbH
 DO NOT ALTER CAD DRAWING BY HAND

| | | | | |
|----------------|--------------|--|---------------------|--------|
| tolerance | | dim. in mm | scale: 2:1 (5:1) | |
| | | | material: SEE NOTES | |
| date | name | title: | | |
| drawn 29.10.13 | Henneboel | D-SUB FILTER MALE 15pos. SOLDER PIN STRAIGHT with threaded insert | | |
| appd. 30.10.13 | Lehmenkühler | | | |
| norm | | | | |
| d-old | | | | |
| rev. a | Original | dwg no: 24K1A1472 | | DIN-A3 |
| description | date | part no: 241□10340X (see note 4) | | sh: 1 |

