

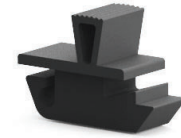


171

MINI SLIDING LOCK



LH/RH



- Suitable for small doors and inside panels
- Suitable for panel thicknesses of between 0.8 mm and 1.5 mm

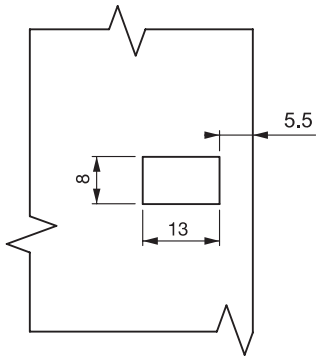
APPLICATIONS

Small metal machinery covers

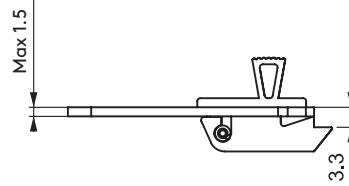
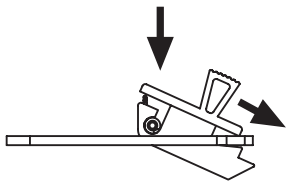
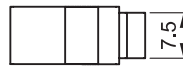
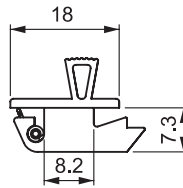
MATERIAL

BODY: ABS

SPRING: Stainless Steel



Cut out



DOOR THICKNESS

Min	Max
0.8mm	1.5mm

