

**MATERIAL SPECIFICATIONS:**

Contacts .....Silver clad copper with gold flash  
 Case Material .....Thermoset  
 Actuator Material .....Nickel plated copper alloy  
 Terminals .....Copper with gold flash  
 Terminal Seal .....Molded in

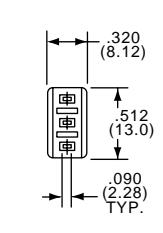
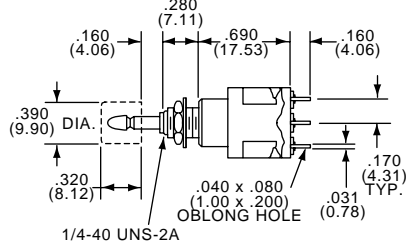
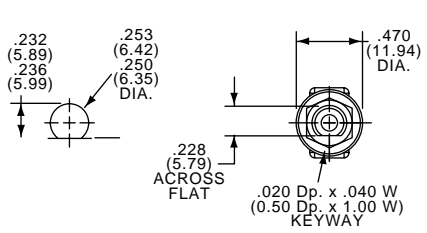
**ENVIRONMENTAL SPECIFICATIONS:**

Operating Temperature .....-4°F to +176°F (-20°C to +80°C)  
 Storage Temperature .....-40°F to +176°F (-40°C to +80°C)

**TYPICAL PERFORMANCE CHARACTERISTICS:**

Contact Rating .....6 A @ 125 VAC, 3 A @ 250 VAC  
 Initial Contact Resistance .....10 Milliohms max.  
 Contact Timing .....Break-before-make  
 Insulation Resistance .....1,000 Megohms min.  
 Dielectric Strength .....1,500 Volts RMS @ sea level  
 Actuation Force .....1.3 to 2.7 lbs.  
 Actuator Travel .....140" (3.56)  
 Life Expectancy .....50,000 Actuations

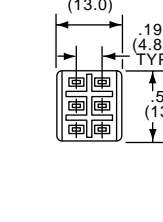
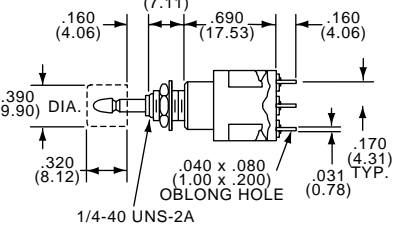
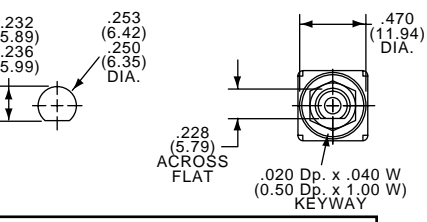
**Notice: O-ring on shoulder and inside moveable shaft provides splashproof seal.**



Model	Type	Act. Code	P. M9	Action
MPE106D	SPDT	23		Push on/Push off
MPE106F	SPDT	19		Momentary

Cap not supplied, order separately (See Cap Model C22 and C23 on page D45.)

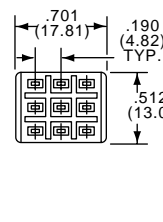
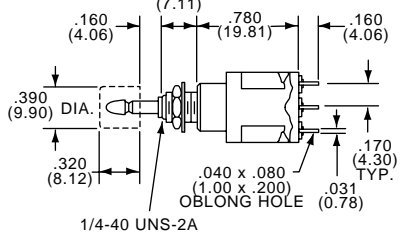
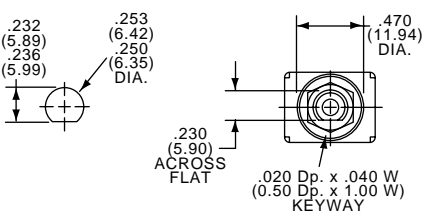
MPE106D



Model	Type	Act. Code	P. M9	Action
MPE206N	DPDT	24		Push on/Push off
MPE206R	DPDT	20		Momentary

Cap not supplied, order separately (See Cap Model C22 and C23 on page D45.)

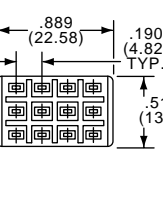
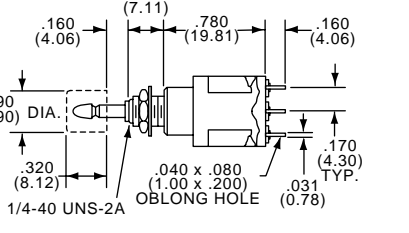
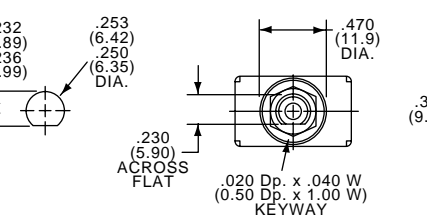
MPE206N



Model	Type	Act. Code	P. M9	Action
MPE306D	3PDT	25		Push on/Push off
MPE306F	3PDT	21		Momentary

Cap not supplied, order separately (See Cap Model C22 and C23 on page D45.)

MPE306F



Model	Type	Act. Code	P. M9	Action
MPE406N	4PDT	26		Push on/Push off
MPE406R	4PDT	22		Momentary

Cap not supplied, order separately (See Cap Model C22 and C23 on page D45.)

MPE406N

**Need more technical information?**  
 Consult your Thomas & Betts  
 sales office listed on the back cover

Thomas & Betts  
 8155 T&B Blvd.  
 Memphis, TN 38125  
 (901) 252-5000 FAX (901) 252-1380