

4

3

2

1

THIS DRAWING IS UNPUBLISHED.

RELEASED FOR PUBLICATION

© COPYRIGHT

ALL RIGHTS RESERVED.

LOC DIST

REVISIONS

P	LTR	DESCRIPTION	DATE	DWN	APVD

# REPLACED BY OCEAN STYLE APPLICATOR PART NUMBER

FOR REPLACEMENT PARTS FOR APPLICATOR REFER TO ADDITIONAL PAGE(S). SPARE PARTS KIT (IF LISTED) WILL REMAIN AVAILABLE.

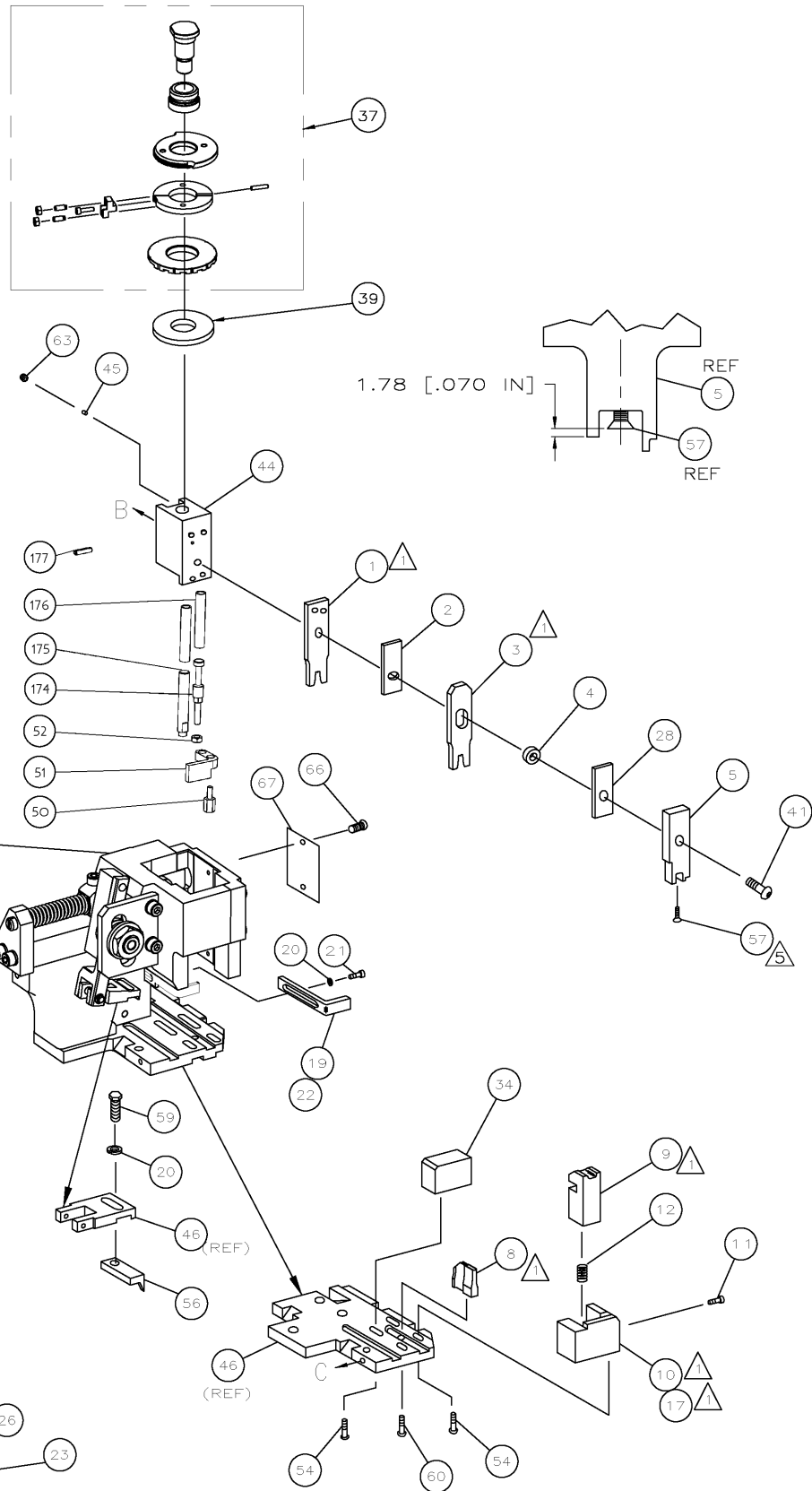
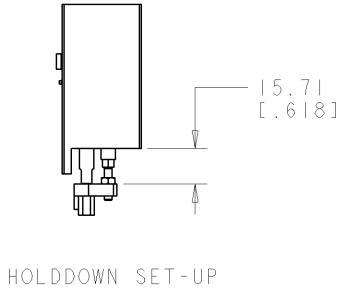
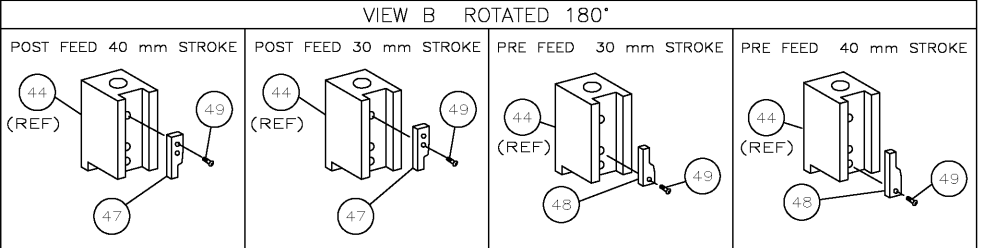
THE REPLACEMENT OCEAN STYLE APPLICATOR HAS THE SAME TERMINATOR/PRESS INTERFACE AS APPLICATOR

THIS DRAWING IS A CONTROLLED DOCUMENT.		DWN	 TE Connectivity		
DIMENSIONS:		CHK			
TOLERANCES UNLESS OTHERWISE SPECIFIED:		APVD	NAME		
 0 PLC ± 1 PLC ± 2 PLC ± 3 PLC ± 4 PLC ± ANGLES ±		PRODUCT SPEC	RESTRICTED TO		
		APPLICATION SPEC	SIZE	CAGE CODE	DRAWING NO
MATERIAL	FINISH	WEIGHT	A3	C-	
		SCALE	SHEET	OF	REV

PART NUMBER	REV	FIRST USED	TERMINATOR	FEED TYPE	DESCRIPTION
1528026-1	J	-	LEADMAKER	MECH POST FEED	CUTS CARRIER
1528026-2	J	-	BENCH	MECH PRE FEED	CUTS CARRIER
1528026-6	J	-	LEADMAKER	MECH POST FEED	CONTINUOUS CARRIER
7-1528026-1	J	-	LEADMAKER	MECH POST FEED	-1 AND SPARE PARTS
7-1528026-2	J	-	BENCH	MECH PRE FEED	-2 AND SPARE PARTS
7-1528026-6	J	-	LEADMAKER	MECH POST FEED	-6 AND SPARE PARTS
7-1528026-7	D	-	-	-	SPARE PARTS KIT

CRIMP DATA (AMP TERMINAL)				
TERMINAL NAME: JUNIOR POWER TIMER CONTACT A				
CRIMP	SIZE	TYPE	RANGE	
WIRE	2.54 [.100 IN]	F	1.25mm <sup>2</sup> - 2.50mm <sup>2</sup>	
INSUL	4.19 [.165 IN]	0	3.45 MAX [.136 IN]	
WIRE STRIP LENGTH		APPL INSTRUCTION		
SEE APPL. SPECS.		408-8322 & 408-8490		
TERMINAL	114-18051 (B)	-	FEED	
APPL SPEC	114-18050 (A)	114-18387 (C)	14.0 [.551 IN]	
TERMINALS APPLIED				
TERMINAL	SEAL			
964273 (A)	963292	-	-	-
964302 (B)	963293	-	-	-
1241396 (C)	-	-	-	-
1241872 (A)	-	-	-	-
MFR PN	TE PN			
15327890	2-964302-1(B)	-	-	-
WIRE SIZE	CRIMP HEIGHT	REF		
mm <sup>2</sup> awg	*	SETTING		
2.50mm <sup>2</sup>	1.86 ±0.05 [.073 ±.002 IN]	A 6		
2.00mm <sup>2</sup>	1.70 ±0.05 [.067 ±.002 IN]	B 6		
1.50mm <sup>2</sup>	1.55 ±0.05 [.061 ±.002 IN]	C 7		
1.25mm <sup>2</sup>	1.47 ±0.05 [.058 ±.002 IN]	D 2		
SET UP GAGE	LAYOUT			
458637-3	L1426009			

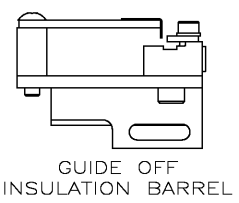
- 1 RECOMMENDED SPARE PARTS.
- 2. GREASE RAM, CAM, CAM FOLLOWER AND FEED ROD LIGHTLY.
- 3. LUBRICATE DAILY PER THE APPLICATOR INSTRUCTION SHEET WITH THE APPLICATOR.
- 4 THIS APPLICATOR APPLIES TERMINAL WITH A SEAL. INSULATION DIA QUOTED IS OUTSIDE DIAMETER OF SEAL. WIRE INSULATION DIA IS DEPENDENT ON SEAL BEING APPLIED.
- 5 APPLY TORQ-SEAL IN ALLEN SOCKET TO FILL HOLE AFTER FLAT HD HAS BEEN ADJUSTED TO CORRECT HEIGHT AT QUALIFICATION. APPLY #1-23419-5 LOC-TITE TO THREADS.
- 6 SEAL PART NO. 963292-1 IS FOR INSULATION DIA 2.7 - 3.0 SEAL PART NO. 963293-1 IS FOR INSULATION DIA 2.0 - 2.7



IF MORE THAN ONE TERMINAL IS APPLIED BY THIS APPLICATOR, FEED MAY REQUIRE ADJUSTMENT WHEN CHANGING FROM ONE TO ANOTHER.

DELPHI PACKARD'S TERMINAL IS APPLICABLE.

**\* WARNING:**  
 ON INSTALLATION, SET WIRE DISC TO LARGEST WIRE SIZE SETTING. USE OF SETTINGS BELOW MIN REQ'D CRIMP HEIGHT SETTING WILL CAUSE DAMAGE TO CRIMP TOOLING.



QTY REQD PER ASSY	PART NO	DESCRIPTION	ITEM NO
1	993111-8	PIN,SLOTTED SPRING 3.0X12.0	177
2	3-22280-7	SPRING,COMPRESSION	176
1	1752353-1	GUIDE PIN,HOLDDOWN	175
1	1901680-1	GUIDE PIN,HOLDDOWN	174
1	1528026	PRINT, APPLICATOR LOG SHEET	72
1	1338705-3	DOCUMENTATION PACKAGE	71
1	461264-5	PLATE, IDENTIFICATION	67
2	21017-2	SCR,DRIVE(#2x.19)ID PLATE	66
1	3-18031-0	SCR,SKT SET(M6X6 LW)RAM	63
2	2-18032-5	SCR,SET(M5X20)DRAG	61
1	18024-7	SCR,BHC(M4X10)ANVIL	60
1	5-18022-2	SCR,HEX(M4X8)FEED FINGER	59
1	985575-3	SCR,FHC(M3X10)DEP	57
1	1338685-1	PAWL, FEED	56
4	18024-8	SCR,BHC(M4X12)SHEAR HOLDER	54
1	1-18030-0	NUT,HEX,REG M3.5	52
1	1901681-1	HOLD-DOWN,TERMINAL	51
1	2-1752354-5	STANDOFF,HOLD-DOWN	50
1	18024-3	SCR,BHC(M3X10)CAM	49
1	1338675-1	CAM, PRE FEED 30 & 40 mm ST	48
1	1338676-1	CAM, POST FEED 30 & 40 mm ST	47
1	1320999-3	APPLICATOR BASIC SUBASSY	46
1	690191-1	PLUG, NYLON	45
1	1633724-1	RAM	44
1	2-18024-6	SCR,BHC(M8X25)RAM	41
1	690125-1	WASHER, LAMINATED	39
1	879103-2	FINE ADJUST HEAD SUBASSY	37
1	1752356-4	SUPPORT, TERMINAL	34
2	1-18024-0	SCR,BHC(M4X20)STRIP GUIDE	33
1	18027-2	WASHER, FLAT(M4)	32
1	1-18023-2	SCR,SKT CAP(M4X12)MOUNT BLOCK	31
1	1320908-3	SPACER, STRIP GUIDE	30
1	1633073-2	STRIP GUIDE PLATE ASSY	29
1	1-455888-7	SPACER, FRONT SHEAR DEP	28
2	1-22284-0	SPRING, DRAG	27
1	356835-1	LEVER, DRAG RELEASE	26
1	240792-1	DRAG, TERMINAL	25
1	1320928-3	GUIDE, STRIP (REAR)	24
1	980371-4	SCR,SHC SHLD	23
1	690472-2	STRIPPER	22
1	1-18023-1	SCR,SHC(M4X10)STRIPPER	21
2	18025-2	WASHER,LOCK(M4)STRIPPER	20
1	690472-1	STRIPPER	19
1	1338684-2	HOLDER, SHEAR, FRONT (NO-CUT)	17
1	3-22280-3	SPRING, SHEAR	12
1	356885-5	STOP, SHEAR	11
1	1-1320921-0	HOLDER, SHEAR, FRONT (CUT)	10
1	318707-1	SHEAR, FLOAT (FRONT)	9
1	1333206-2	ANVIL	8
1	1338680-1	DEPRESSOR, SHEAR (FRONT)	5
1	238011-4	SPACER, BLOCK CRIMPER	4
1	2-562244-2	CRIMPER, INSULATION	3
1	455888-6	SPACER, CRIMPER	2
1	456407-5	CRIMPER, WIRE	1

THIS DRAWING IS A CONTROLLED DOCUMENT.		DWN	L LOFHOUSE	11JUN01
DIMENSIONS: INCHES		CHK		
TOLERANCES UNLESS OTHERWISE SPECIFIED:		APVD	F BACKHURST	11JUN01
0. PLC ± .01		NAME	SIDE FEED HD-I F/ADJ APPL	
1. PLC ± .02		APPLICATION SPEC		
2. PLC ± .03		SIZE	A1	
3. PLC ± .05		CAGE CODE	00779	
4. PLC ± .07		DRAWING NO	1528026	
ANGLES ± .1		WEIGHT		
MATERIAL	FRESH	CUSTOMER DRAWING	SCALE	SHEET 1 OF 1