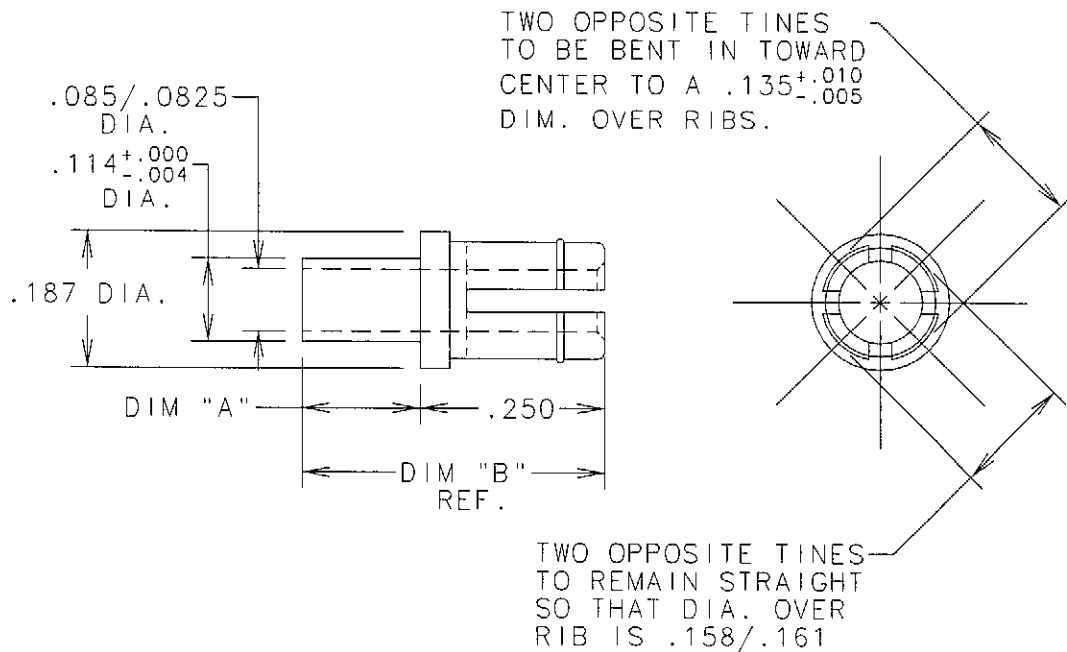


ENG110C

DWG. NO. 31YY1001-X



Obsolete  
Obsolete

SALES PART NO.	TEST JACK PART NO.	DIM "A"	DIM "B"	P.C. BOARD THICKNESS
31-1	31C1012-1	.105	.355	1/16"
31-2	31C1012-2	.135	.385	3/32"
31-3	31C1012-3	.165	.415	1/8"

NOTES:

1. FINISH: SILVER .0003/.0005 UNDER GOLD .00002 MIN.

P	DWP 9-17-97	REDRAWN TO CAD ECN#317632 DWS 9-16-97
A	JMK 1-18-55	ORIGINAL JMK 1-18-55
ISSUE	APP/DATE	DESCRIPTION
REVISIONS		
<b>Grayhill</b>		GRAYHILL, INC. 561 HILLGROVE AVE. LA GRANGE, IL 60525 PHONE (708) 354-1040
UNLESS OTHERWISE SPECIFIED TOLERANCES AND DIMENSIONS ARE IN INCHES LINEAR ± .010 DIAMETERS ± .003 ANGULAR ± 5' LIMITS APPLY BEFORE FINISHING DO NOT SCALE THIS PRINT		
CRITICAL CHARACTERISTIC FLAGS PER GRAYHILL SPEC. SOP2338		
	-- CRITICAL CHARACTERISTIC FLAG	
	-- Cpk REQUIRED	
	-- S.P.C. FLAG (CONTROL CHART REQ'D ON FEATURE SPECIFIED)	
FINISH	SEE NOTE 1	APPROVED DATE JMK 1-18-55
MATERIAL	BRASS ALLOY #283	CHECKED DATE JMK 1-18-55
NAME	TEST JACK ASSY.	DRAWN DATE JMK 1-18-55
CAGE NO.	81073	CADAM DRAWING 31YY1001-X, P. 01, 1, 1
A SIZE	DWG. NO. 31YY1001-X	ISSUE P
SCALE	4:1	SHEET 1 OF 1