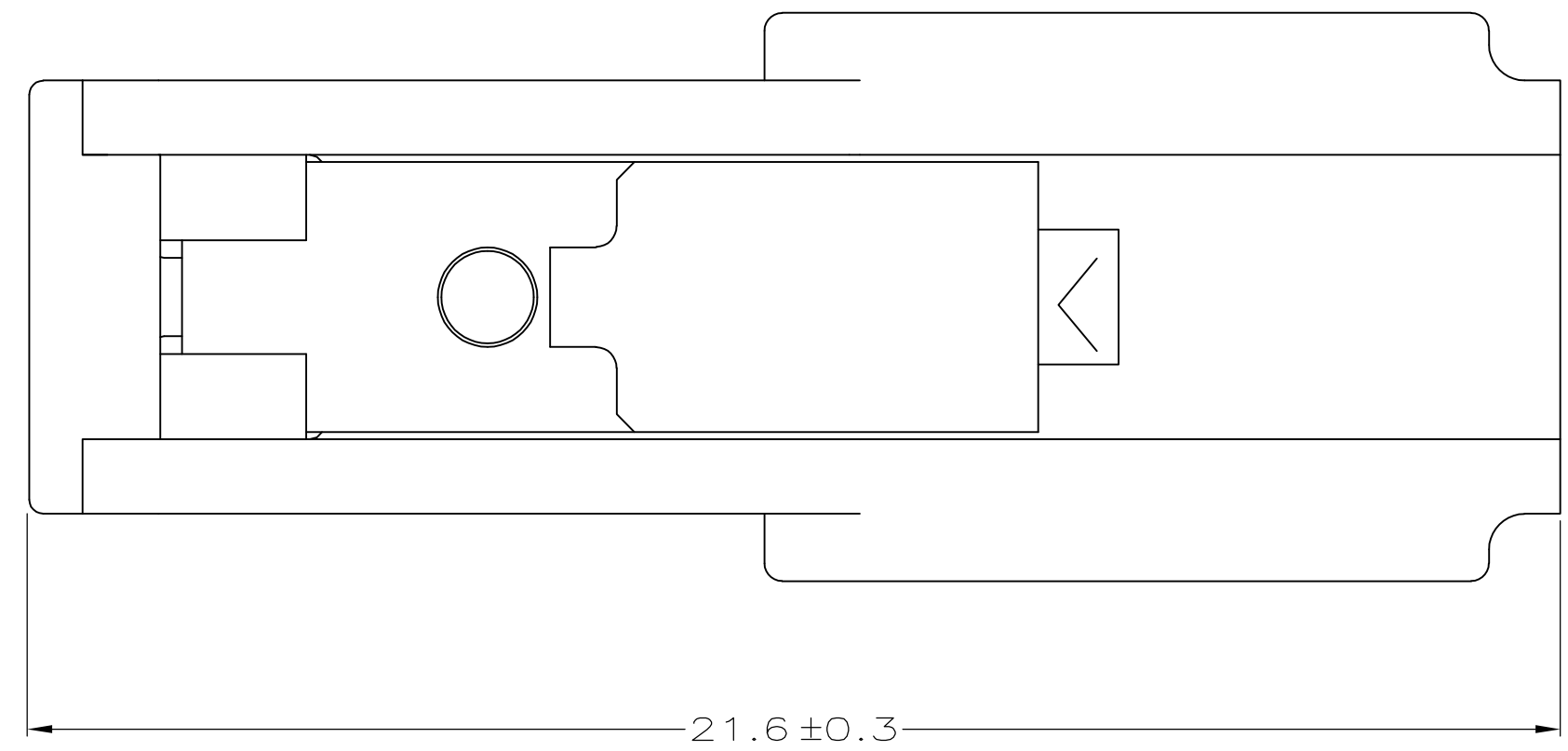
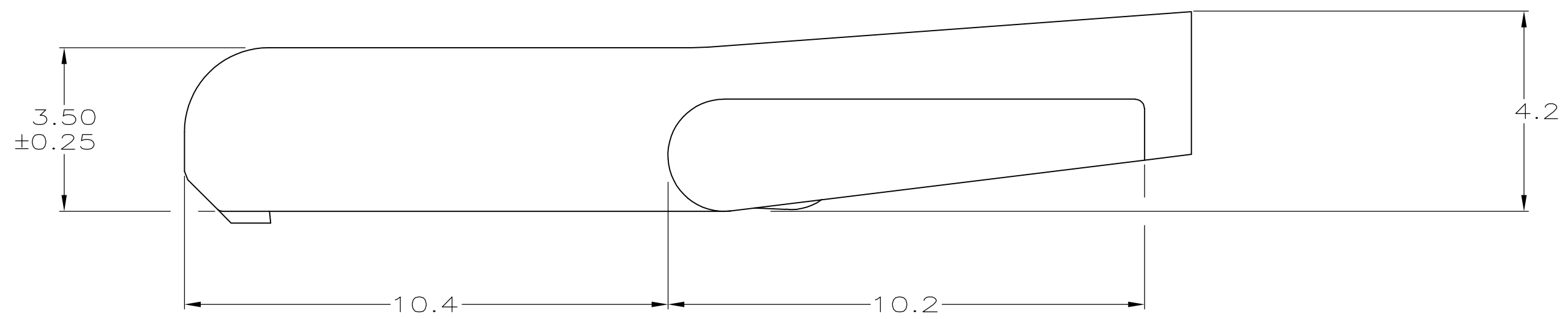
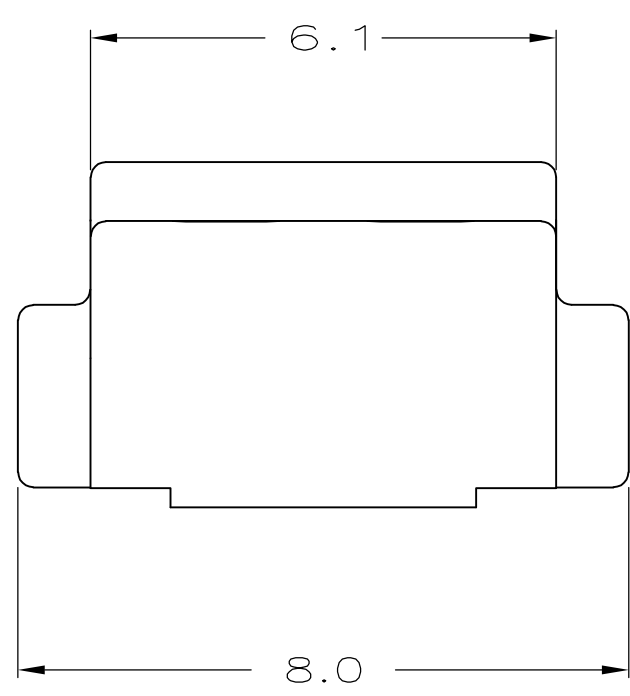


LOC	DIST	REVISIONS			
P	LTR	DESCRIPTION	DATE	DWN	APVD
AG	0				
	C1	REVISED PER ECR-10-014787	14 JUL 10	OL	CW

1. USED IN AMP-DUAC/PL™ RECEPTACLE HOUSINGS. ONE REQUIRED PER HOUSING.
  2. INSTALL LATCH ASSEMBLY AFTER CUSTOMER SUPPLIED BACKSHELL. (USE OF BACKSHELL IS OPTIONAL).
  3. LATCH ASSEMBLY AVAILABLE WITH EXTENDED LEVER ARM, 794150-1.
- ⚠ MATERIAL: LATCH ARM - PBT, GLASS REINFORCED  
 COLOR - NATURAL  
 SPRING - STAINLESS STEEL.



794150-1  
 PART NUMBER

THIS DRAWING IS A CONTROLLED DOCUMENT.		DWN K. WHITAKER 8-15-97	<b>AMP</b> AMP Incorporated Harrisburg, PA 17105-3608	
		CHK R. SWING 8-15-97		
DIMENSIONS: mm		APVD E. BEILES 8-15-97	NAME LATCH ASSEMBLY, STANDARD, AMP-DUAC/PL™ POWER CONNECTOR	
TOLERANCES UNLESS OTHERWISE SPECIFIED: 0 PLC ±- 1 PLC ±0.2 2 PLC ±0.13 3 PLC ±- 4 PLC ±- ANGLES ±1'		PRODUCT SPEC 108-1646	SIZE A2	
MATERIAL ⚠		APPLICATION SPEC 114-6067	CAGE CODE 00779	DRAWING NO C-794150
FINISH ⚠		WEIGHT -	RESTRICTED TO -	
CUSTOMER DRAWING			SCALE 10:1	SHEET 1 OF 1