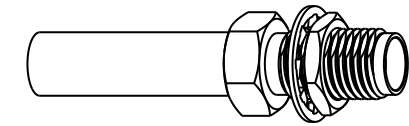


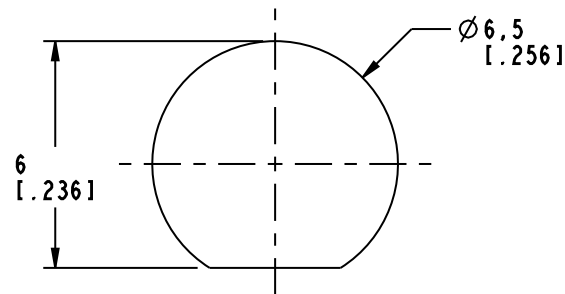
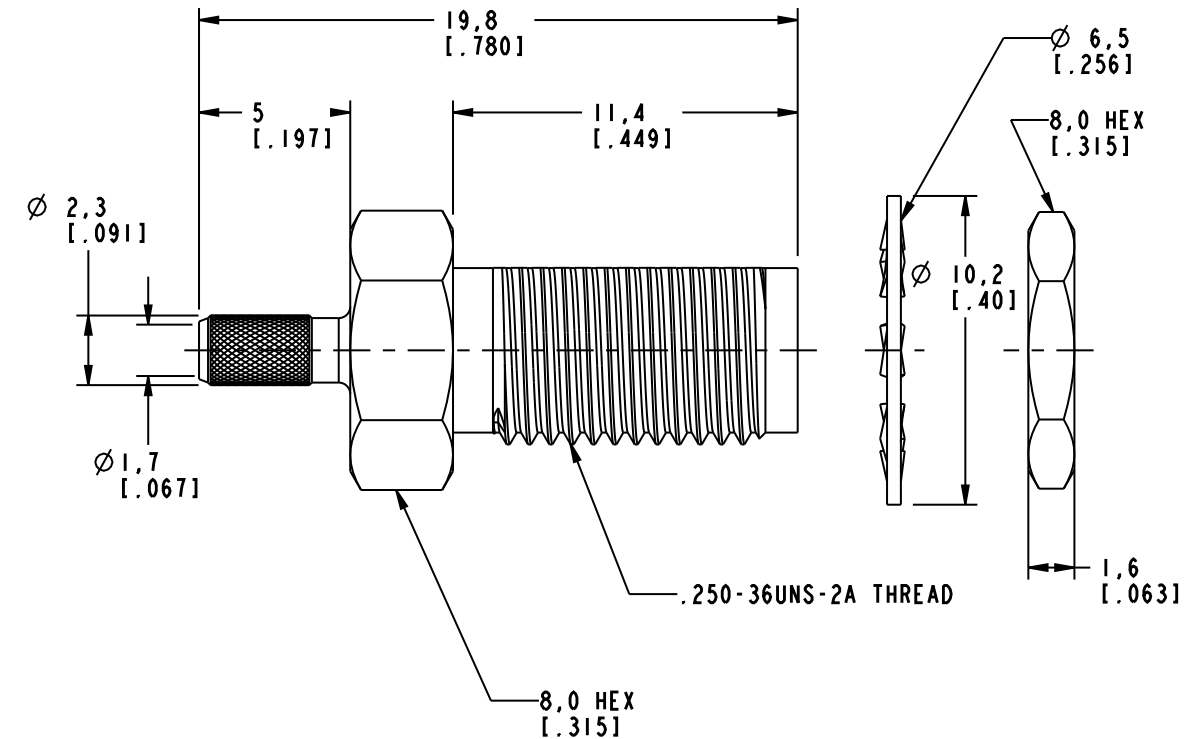
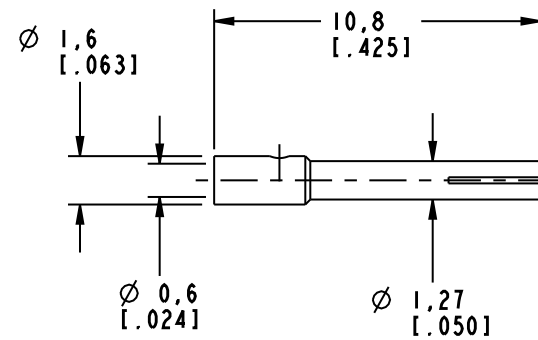
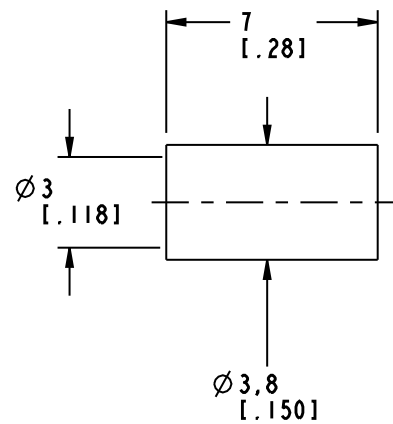
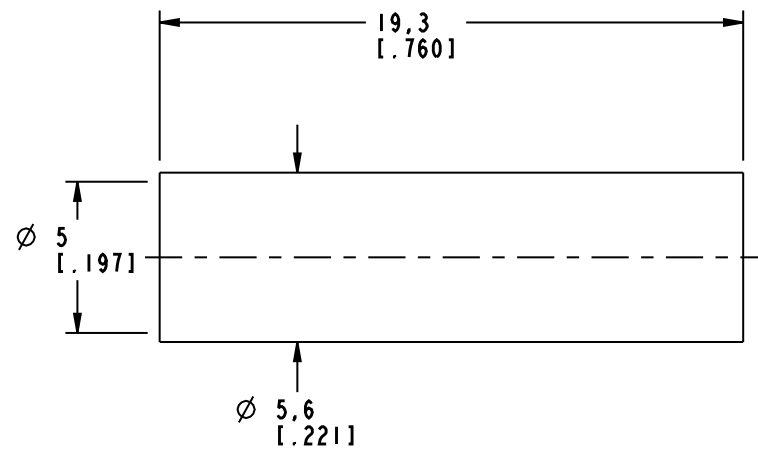
NOTES:

- MATERIALS OF CONSTRUCTION:
 BODY & HEX NUT = BRASS (ASTM-B16 H02, C36000), GOLD PLATED (.000003 MIN THICK)
 CONTACT PIN = BeCu (QQ-C-530), GOLD PLATED (.000050 MIN THICK)
 LOCKWASHER = BRASS (QQ-B-613), GOLD PLATED (.000003 MIN THICK)
 FERRULE = COPPER, GOLD PLATED (.000003 MIN THICK)
 INSULATOR = PTFE, ASTM D 1710 OR EQUIV.
 HEAT SHRINK TUBING = COLOR BLACK

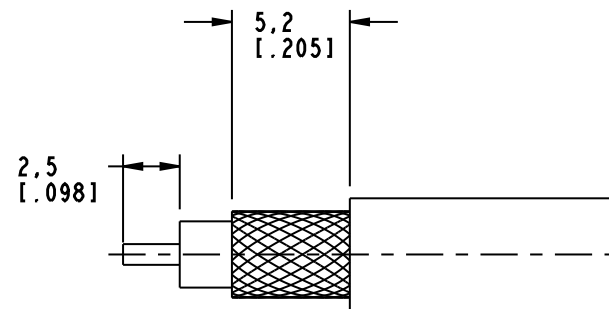
901-9875		REVISIONS			
DRAWING NO.	REV	DESCRIPTION	DATE	ECO	APPR
THIRD ANGLE PROJ.	A	RELEASE TO MFG.	4/7/95	40352	PB/RV
	C	SEE SHEET 1	10/2/02	44222	CPM



SCALE 1.500



RECOMMENDED MOUNTING HOLE DIMENSIONS
SCALE 5.000



RECOMMENDED CABLE STRIPPING DIMENSIONS
SCALE 3.000

CUSTOMER OUTLINE DRAWING

ALL OTHER SHEETS ARE FOR INTERNAL USE ONLY

UNLESS OTHERWISE SPECIFIED, DIMENSIONS ARE IN MM (INCHES) AND TOLERANCES ARE:
 0.5 - 6mm ±0.2mm
 6 - 30mm ±0.4mm
 30 - 120mm ±0.6mm

NOTICE - These drawings, specifications, or other data (1) are, and remain the property of Amphenol Corp. (2) must be returned upon request; and (3) are confidential and not to be disclosed to any person other than those to whom they are given by Amphenol Corp. The furnishing of these drawings, specifications, or other data by Amphenol Corp., or to any other person to anyone for any purpose is not to be regarded by implication or otherwise in any manner licensing, granting rights or permitting such holder or any other person to manufacture, use or sell any product, process or design, patented or otherwise, that may in any way be related to or disclosed by said drawings, specifications, or other data.

MATERIAL
 REFERENCE
 GEN# 901-10039-RFX_ASSY
 EAR 966280-3 & 111-964413

DRAWN
 C. McGRATH
 ENGINEER
 O. BARTHELME
 APPROVED
 O. BARTHELME
 CAD FILE
 I:\SMA\901-9875

DATE
 10/1/02
 DATE
 10/1/02
 DATE
 10/2/02

TITLE
 SMA BULKHEAD
 CRIMP JACK
 (FOR RG-174/U, 188A/U,
 316/U CABLES)

Amphenol
 Amphenol Corporation
 Communication and Network
 Products Division
 Danbury, CT U.S.A. 06810

SCALE: 4.0:1 SHEET 2 OF 2

CODE ID 74868 DWG SIZE B DRAWING NO. 901-9875 REV C