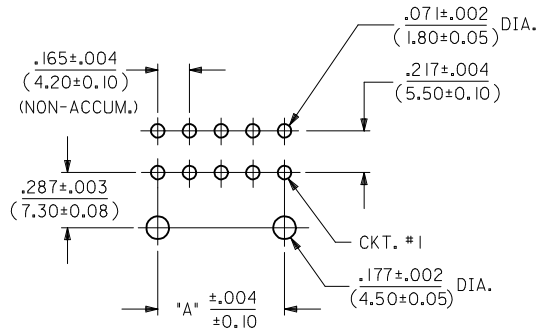
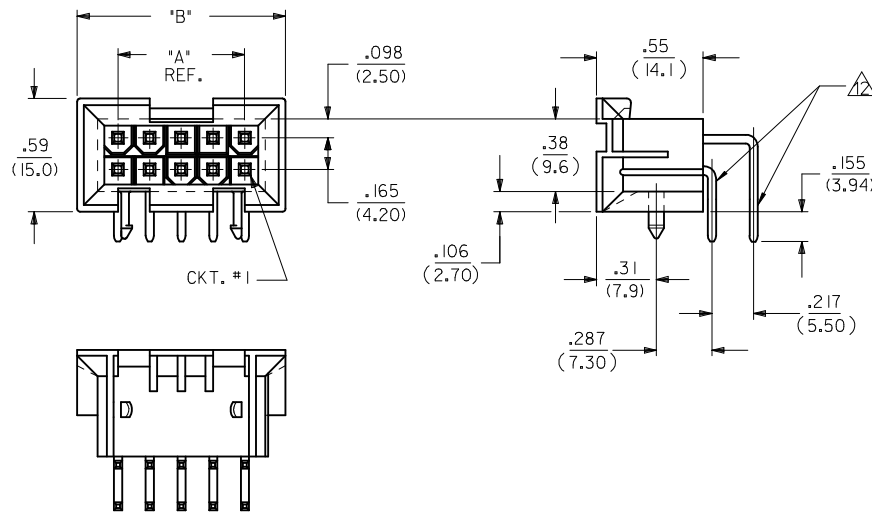
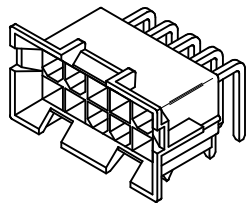


CIRCUIT SIZE	DIM. "A"	DIM. "B"
6	.331 (8.40)	.76 (19.2)
8	.496 (12.60)	.92 (23.4)
10	.661 (16.80)	1.09 (27.6)
12	.827 (21.00)	1.25 (31.8)
14	.992 (25.20)	1.42 (36.0)
16	1.157 (29.40)	1.58 (40.2)
18	1.323 (33.60)	1.75 (44.4)
20	1.488 (37.80)	1.91 (48.6)
22	1.654 (42.00)	2.08 (52.8)
24	1.819 (46.20)	2.24 (57.0)



9 RECOMMENDED HOLE LAYOUT FOR
.101/(2.56) MAX. THICK P.C. BOARD
(VIEWED FROM COMPONENT SIDE)

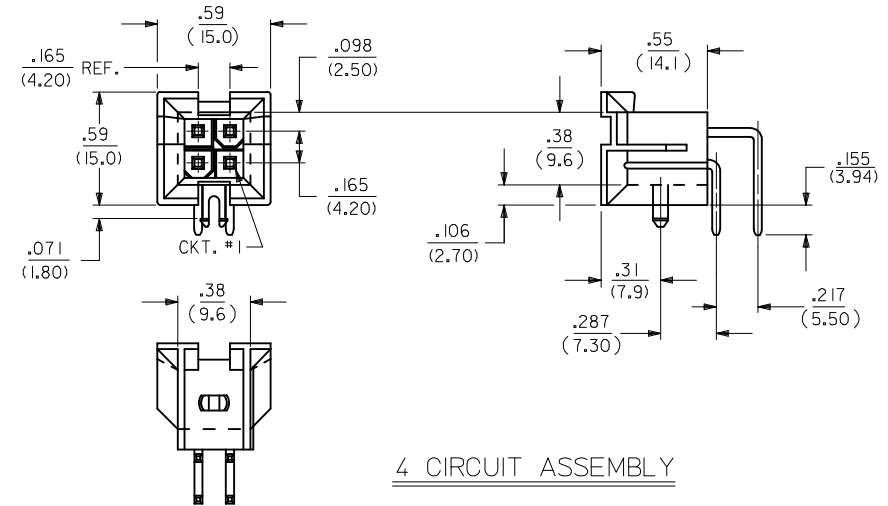


43644 *****

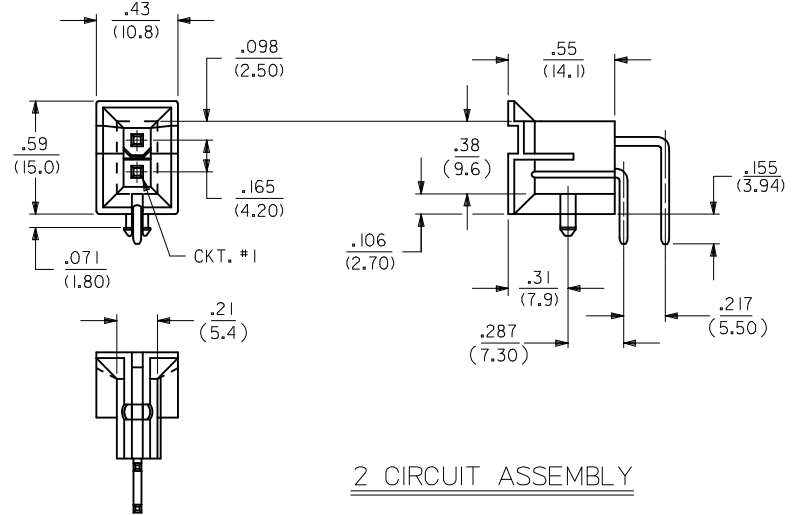
NOTES:

- HOUSING MATERIAL:
1 = NYLON 6/6, U.L. 94V-0, COLOR: NATURAL.
TERMINAL MATERIAL: BRASS, ALLOY.
 - TERMINAL PLATING:
1 = .000100/(.00254) MIN. MATTE TIN OVER
.000050/(.00127) MIN. NICKEL OVERALL.
2 = .0000 0/(.00076) MIN. SELECT GOLD
.000100/(.00254) MIN. SELECT MATTE TIN OVER
.000050/(.00127) MIN. NICKEL OVERALL.
 - PRODUCT SPECIFICATION: PS-5556-002
 - PACKAGING SPECIFICATION: PK-42404-002
 - 4-24 CKT. PARTS MATE WITH MINI-FIT JR. RECEPTACLES
#5557, #42385, #44516 AND #42474. 2 CKT. PART MATES WITH
#42385, #44516 AND #42474 ONLY.
 - PART ALLOWS FOR UP TO .100/(2.54) MISALIGNMENT WITH
MATING RECEPTACLE IN ANY DIRECTION. SEE MATING
CONNECTOR DRAWINGS FOR SPECIFIC ALLOWANCES.
 - DISCOLORATION IN THE BANDOLIER CARRIER AREA OF THE PIN
IS INHERENT TO THE PLATING PROCESS AND IS DUE TO THE
MASKING EFFECT OF THE CARRIER. THIS DISCOLORATION IS IN A
NON-FUNCTIONAL AREA OF THE PIN AND WILL NOT AFFECT THE
PERFORMANCE OF THE HEADER ASSEMBLY.
 - CONNECTOR ASSEMBLIES ARE NOT TO BE MATED
OR UNMATED WHILE CIRCUITS ARE LIVE.
- △ THIS HOLE PATTERN DOES NOT PROVIDE FOR LOCKING
THE HOUSING TO THE P.C. BOARD
- ITEM NUMBERS PRECEDED BY AN "X" ARE NOT TOOLED.
 - THIS PART CONFORMS TO CLASS B REQUIREMENTS OF COSMETIC
SPECIFICATION PS-45499-002.
- △ FORMING MARKS ARE ACCEPTABLE

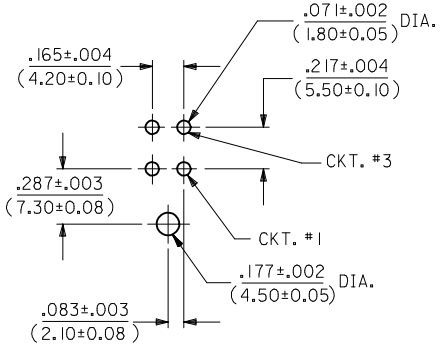
CHANGE PLATING EC NO: UCP2013-1776 DRWINBEE 2012/11/02 CHKD:JBELL 2012/11/02 APPR:FSMITH 2012/11/06	QUALITY SYMBOLS ▽=0 ▽=0 ▽=0	GENERAL TOLERANCES (UNLESS SPECIFIED)		DIMENSION STYLE IN/MM		SCALE 2:1	DESIGN UNITS METRIC	THIRD ANGLE PROJECTION																
		<table border="1"> <thead> <tr> <th></th> <th>mm</th> <th>INCH</th> </tr> </thead> <tbody> <tr> <td>4 PLACES</td> <td>± ---</td> <td>± ---</td> </tr> <tr> <td>3 PLACES</td> <td>± ---</td> <td>± .010</td> </tr> <tr> <td>2 PLACES</td> <td>± 0.25</td> <td>± .015</td> </tr> <tr> <td>1 PLACE</td> <td>± 0.38</td> <td>± ---</td> </tr> <tr> <td>0 PLACE</td> <td>± ---</td> <td>± ---</td> </tr> </tbody> </table>			mm	INCH	4 PLACES	± ---	± ---	3 PLACES	± ---	± .010	2 PLACES	± 0.25	± .015	1 PLACE	± 0.38	± ---	0 PLACE	± ---	± ---	DRAWN BY: AD RATNOL DATE: 2005/12/05 CHECKED BY: GPOLGAR DATE: 2005/12/05 APPROVED BY: FSMITH DATE: 2012/11/06		MINI-FIT JR BMI RIGHT ANGLE HDR ASSY FOR .094/(2.40) PCB molex
	mm	INCH																						
4 PLACES	± ---	± ---																						
3 PLACES	± ---	± .010																						
2 PLACES	± 0.25	± .015																						
1 PLACE	± 0.38	± ---																						
0 PLACE	± ---	± ---																						
A	ANGULAR ±1/2°	DRAFT WHERE APPLICABLE MUST REMAIN WITHIN DIMENSIONS		MATERIAL NO. SEE SHEET 3		DOCUMENT NO. SD-43644-002	SHEET NO. 1 OF 3																	



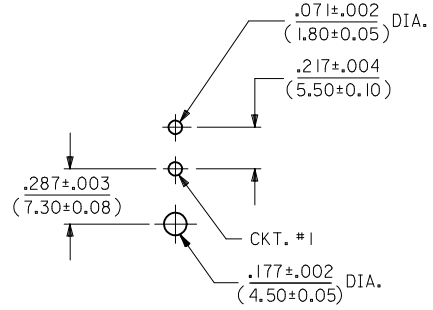
4 CIRCUIT ASSEMBLY



2 CIRCUIT ASSEMBLY



RECOMMENDED HOLE LAYOUT FOR
.101/(2.56) MAX. THICK P.C. BOARD
(VIEWED FROM COMPONENT SIDE)



RECOMMENDED HOLE LAYOUT FOR
.101/(2.56) MAX. THICK P.C. BOARD
(VIEWED FROM COMPONENT SIDE)

SEE SHEET ONE EC NO: UCP2013-1776 DRWN:BBEE 2012/11/02 CHKD:JBELL 2012/11/02 APPR:FSMITH 2012/11/06	QUALITY SYMBOLS ▽=0 ▽=0 ▽=0	GENERAL TOLERANCES (UNLESS SPECIFIED)		DIMENSION STYLE IN/MM		SCALE 1:1	DESIGN UNITS METRIC	THIRD ANGLE PROJECTION		
				DRAWN BY AD RATNOL	DATE 2005/12/05	TITLE MINI-FIT JR BMI RIGHT ANGLE HDR ASSY FOR .094/(2.40) PCB				
				CHECKED BY GPOLGAR	DATE 2005/12/05					
				APPROVED BY FSMITH		DATE 2012/11/06	molex DOCUMENT NO. SD-43644-002			
		ANGULAR ±1/2°		MATERIAL NO. SEE SHEET 3	SHEET NO. 2 OF 3					
DRAFT WHERE APPLICABLE MUST REMAIN WITHIN DIMENSIONS		SIZE C		THIS DRAWING CONTAINS INFORMATION THAT IS PROPRIETARY TO MOLEX INCORPORATED AND SHOULD NOT BE USED WITHOUT WRITTEN PERMISSION						

J	I	H	G	F	E	D	C	B	A
		ITEM NUMBER	CKT SIZE	HOUSING MATERIAL	PLATING (SEE NOTE 2)				
		02	02	94V-0	MATTE TIN OVER NICKEL				
		04	04						
		06	06						
		08	08						
		10	10						
		12	12						
		14	14						
		16	16						
		18	18						
		20	20						
		22	22						
		24	24						

J	I	H	G	F	E	D	C	B	A
		ITEM NUMBER	CKT SIZE	HOUSING MATERIAL	PLATING (SEE NOTE 2)				
X		43644-0001	02	94V-0	MATTE TIN OVER NICKEL				
X		-0002	04						
X		-0003	06						
X		-0004	08						
X		-0005	10						
X		-0006	12						
X		-0007	14						
X		-0008	16						
X		-0009	18						
X		-0010	20						
X		-0011	22						
		43644-0012	24	94V-0	MATTE TIN OVER NICKEL				

J	I	H	G	F	E	D	C	B	A
		ITEM NUMBER	CKT SIZE	HOUSING MATERIAL	PLATING (SEE NOTE 2)				
X		43644-0013	02	94V-0	30 M.I. GOLD				
X		-0014	04						
X		-0015	06						
X		-0016	08						
X		-0017	10						
X		-0018	12						
X		-0019	14						
X		-0020	16						
X		-0021	18						
X		-0022	20						
X		-0023	22						
X		43644-0024	24	94V-0	30 M.I. GOLD				

SEE SHEET ONE EC NO: UCP2013-1776 DRWN:BBEE 2012/11/02 CHKD:JBELL 2012/11/02 APPR:FSMITH 2012/11/06 REV: A	QUALITY SYMBOLS = 0 = 0 = 0	GENERAL TOLERANCES (UNLESS SPECIFIED) <table border="1"> <tr><th></th><th>mm</th><th>INCH</th></tr> <tr><td>4 PLACES</td><td>± .---</td><td>± .---</td></tr> <tr><td>3 PLACES</td><td>± .---</td><td>± .010</td></tr> <tr><td>2 PLACES</td><td>± 0.25</td><td>± .015</td></tr> <tr><td>1 PLACE</td><td>± 0.38</td><td>± .---</td></tr> <tr><td>0 PLACE</td><td>± .---</td><td>± .---</td></tr> </table>		mm	INCH	4 PLACES	± .---	± .---	3 PLACES	± .---	± .010	2 PLACES	± 0.25	± .015	1 PLACE	± 0.38	± .---	0 PLACE	± .---	± .---	DIMENSION STYLE IN/MM DRAWN BY: ADRATNOL DATE: 2005/12/05 CHECKED BY: GPOLGAR DATE: 2005/12/05 APPROVED BY: FSMITH DATE: 2012/11/06	SCALE: 1:1 DESIGN UNITS: METRIC THIRD ANGLE PROJECTION	TITLE: MINI-FIT JR BMI RIGHT ANGLE HDR ASSY FOR .094/(2.40) PCB
		mm	INCH																				
	4 PLACES	± .---	± .---																				
	3 PLACES	± .---	± .010																				
2 PLACES	± 0.25	± .015																					
1 PLACE	± 0.38	± .---																					
0 PLACE	± .---	± .---																					
DRAFT WHERE APPLICABLE MUST REMAIN WITHIN DIMENSIONS		MATERIAL NO. SEE CHART		DOCUMENT NO. SD-43644-002																			
THIS DRAWING CONTAINS INFORMATION THAT IS PROPRIETARY TO MOLEX INCORPORATED AND SHOULD NOT BE USED WITHOUT WRITTEN PERMISSION																							
					SHEET NO. 3 OF 3																		