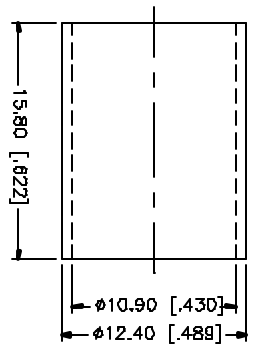
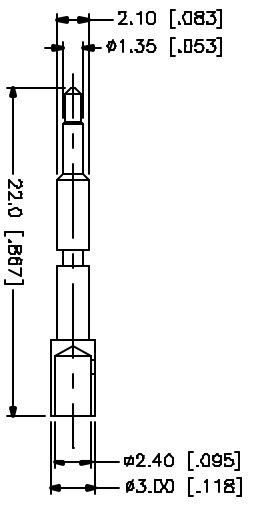
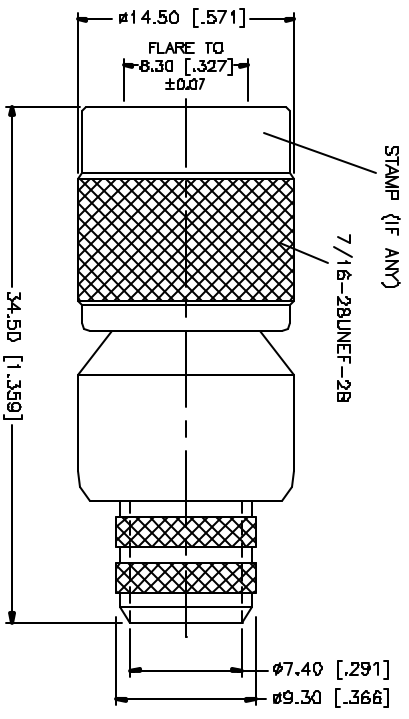
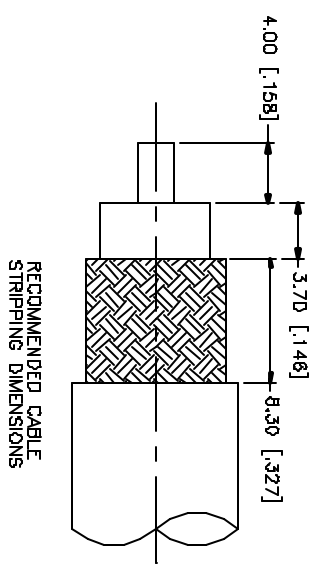


REV.	DATE	DESCRIPTION
NC	05/27/97	INITIAL RELEASE
A	05/01/04	UPDATE DRAWING FORMAT



NOTE:
 1. CRIMPED FERRULE
 HEX CRIMP SIZE .429"
 2. CRIMPED CONTACT PIN
 HEX CRIMP SIZE .100"

QTY	FINISH	MATERIAL	DESCRIPTION
1	NICKEL	COPPER	FERRULE
1	GOLD	BRASS	CONTACT PIN
1	NATURAL	TERFLON	INSULATOR
1	NICKEL	BRASS	BODY

APPROVALS	DATE
DRAWN G.R.S.	05/01/04
CHECKED	
ISSUED	
BHEET 1 OF 1	

Amphenol Connex

TNC CRIMP PLUG
 (FOR BELDEN 8/U, 213U)

122394

DWG. NO. 122394.DWG REV. A SIZE A SCALE NA

UNLESS OTHERWISE SPECIFIED DIMENSIONS ARE IN MILLIMETERS (DIMENSIONS IN PARENTHESES ARE IN INCHES AND ARE FOR REFERENCE PURPOSES ONLY.)

UNLESS OTHERWISE SPECIFIED TOLERANCES FOR MILLIMETERS ARE:
 0.5 - 30mm ± 0.20mm
 30 - 120mm ± 0.30mm
 120 - 300mm ± 0.40mm
 300 - 1200mm ± 0.50mm

UNLESS OTHERWISE SPECIFIED TOLERANCES FOR INCHES ARE:
 .020 - .315 ± 0.007"
 .315 - 1.180 ± 0.015"
 1.180 - 4.724 ± 0.020"

DO NOT SCALE DRAWING