

Modules and Accessories

Modules for PWS-770 (CTOS Only)

1D Barcode Scanner



- P/N: S10A-93-S10A2-015 (w/o camera)
S10A-93-S10A2-011 (with 2.0M camera)
- SPEC:
 - ZEBEX Z-5111 1D Imager
 - LED Source: 617 visible LED
 - Optical system: Linear CCD array
 - Microprocessor: 32bit
 - Depth of Field: 300mm
 - Scan Angel: 43°
 - Interface: USB
- Operating temp.: 0°C–50°C
- Dimensions: 75.3 x 44 x 34.2mm
- Weight: 35g (w/o camera)

1D barcode Scanner (Intermac)



- P/N: PWS-770-BAR100E (w/o camera)
PWS-770-BAR120E (with 2.0M camera)
PWS-770-BAR150E (with 5.0M camera)
- SPEC:
 - Intermac EV15 1D Imager
 - Light Source: Amber LED 617nm (solid state)
 - Sensor: APS CMOS bi-linear
 - Scanner rate: Up to 500 scan/s
 - Scan Angel: 40°
 - Interface: USB
 - IP Rating: IP54
- Operating temp.: -10°C–50°C
- Dimensions: 75.3 x 44 x 34.2mm
- Weight: 35g (w/o camera)

2D Barcode Scanner



- P/N: PWS-770-BAR200E (w/o camera)
PWS-770-BAR220E (with 2.0M camera)
PWS-770-BAR250E (with 5.0M camera)
- SPEC:
 - Intermac EA31 2D Imager
 - Light Source: Highly visible white LED (Aimer 617 nm red LED)
 - Optical resolution: 752 x 480 pixels
 - Motion tolerance: 400 in/s
 - Reads 1D & 2D matrix codes
 - Ability to read damaged, poorly printed, and colored bar codes
 - Scan Angle: 39° (Horizontal), 25.5° (Vertical)
 - Interface: USB
 - IP Rating: IP54
- Operating temp.: -10°C–50°C
- Dimensions: 75.3 x 50 x 38mm
- Weight: 40g (w/o camera)

MSR (Magnetic Card Reader)



- P/N: S10A-93-S10A2-012
- SPEC:
 - GIGATEK MSR170
 - 43mm Magnetic stripe swipe card
 - Standard: ISO 7810, 7811
 - Decoding method: ISO TK1,2, &3
- Dimensions: 75.3 x 49 x 31.5mm
- Weight: 40g

2.0M Camera



- P/N: PWS-770-CCD100E
- SPEC:
 - Fanglec EM5020B
 - Image resolution: 1600(H) x 1200(V)
 - Compliant to USB Video Class
 - CMOS sensor
 - IP54, 4ft drop
- Operating temp.: -10°C–50°C
- Dimensions: 75.3 x 19 x 17.5mm
- Weight: 7.8g

5.0M Camera



- P/N: PWS-770-CCD200E
- SPEC:
 - Fanglec AV5650A22
 - Image resolution: 2592(H) x 1944(V)
 - Compliant to USB Video Class
 - CMOS sensor
 - Supports Auto Focus Control
 - Supports for LED Flashlight
 - IP54, 4ft drop
- Operating temp.: -10°C–50°C
- Dimensions: 75.3 x 19 x 17.5mm
- Weight: 7.8g

HF RFID



- P/N: S10A-93-S10A2-014
- SPEC:
 - REYAX RR10
 - Based on the RFID 13.56MHz protocol
 - Supports Tag ICs: ISO1444A, ISO14443B, ISO15693, NFCIP-1, NFCIP-2
 - IP Rating: IP54
- Operating temp.: -10°C–50°C
- Dimensions: 75.3 x 41 x 38.8mm
- Weight: 40g

Accessories for PWS-770

Carry Bag



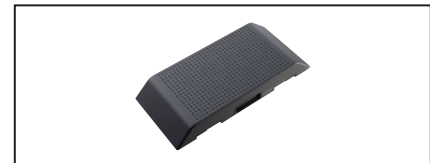
- P/N: S10A-93-S10A1-001
- Material: PVC
- Color: Black
- Dimensions: 265 x 230 x 30mm
- Weight: 440g

Hand Strap



- P/N: S10A-93-S10AA-002
- Material: PVC
- Color: Black
- Dimensions: 245 x 175 x 10mm
- Weight: 85g

External Battery



- P/N: PWS-770-BAT100E (11.1V 3760mAh)
 - IP rating: IP54 With Device
 - Dimensions: 181.8 x 87.6 x 18.8mm
 - Weight: 325g
- P/N: PWS-770-BAT200E (11.1V 5000mAh)
 - IP rating: IP54 With Device
 - Dimensions: 181.8 x 87.6 x 26.8mm
 - Weight: 382g

Stand



- P/N: S10A-93-S10A6-001
- Material: SECC + Rubber
- Angle: 0–75 degree angle
- Dimensions: 207 x 117 x 12mm
- Weight: 100g

VESA Mount



- P/N: S10A-93-S10A6-011 (M6)
- P/N: S10A-93-S10A6-021 (M4)
- Material: SPCC
- Color: Black
- Dimensions: 176 x 237 x 19mm
- weight: 306g

Car Adapter (Lab. testing)



- P/N: PWS-770-CADAP00E (10-32V to Cigar Lighter)
PWS-770-CAD1200E (12V relay to wire)
PWS-770-CAD2400E (24V relay to wire)
- 90W Max. Continuous Output Power
- Output 18.5V ± 5%
- Input power 110W max at continuous load
- Operating Temp: -20 ~ 70° C (for 66% Load), -20 ~ 40° C (for any condition)
- 4.6" x 2.1" x 1.3" Package Size
- Over-Voltage and Short Circuit Protection
- Built-in EMC Filter
- CE, FCC, UL, CB, C-Tick, E-Mark Certified
- Weight: 380g